

ED700

Indoor Day/Night 3-Axis Mini Dome Camera



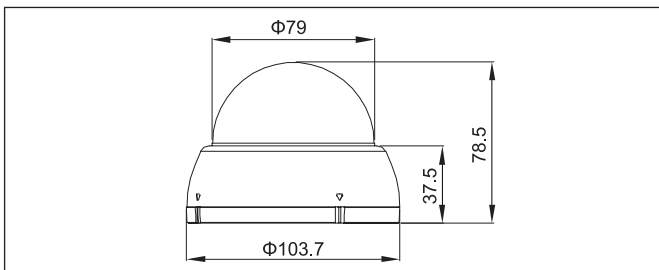
Features

- Ultra resolution of over 720 horizontal TV lines for astounding image quality
- Exview HAD II sensor delivers amazing ultra high sensitivity of .05 lux – very low light sensitivity without DSS low light boost - Zero Ghosting guaranteed
- Astounding image quality from the 3.6mm lens
- Adaptive Tone Curve Reproduction (ATR)/Digital Wide Dynamic Range expansion) to deliver properly exposed images despite unbalanced lighting in the scene
- Provides 2D-Noise Reduction to improve picture clarity while enabling DVRs to improve disk storage utilization
- Easy to use OSD setup menu
- Compact size for discreet surveillance
- The flexible angle viewing with its 3 Axis rotation design allows wall or ceiling mounting

Specifications

Part Number	ED700
Pickup Device	1/3" Sony Exview HAD II 960H High Sensitivity Interline CCD
Video Format	NTSC or Pal
Picture Elements	1020 x 508 (NTSC) 1020 x 508 (NTSC)
Effective Pixels (NTSC PAL)	976 x 494 (NTSC) 976 x 582 (PAL)
Scanning System	2:1 Interlace
Horizontal Resolution	720+ TVL
Sensitivity	.05 Lux
S/N Ratio	Over 50dB (AGC off)
Electronic Shutter	1/60s~1/100,000s
Video Output	BNC 1.0Vp-p 75Ω
Gamma Correction	0.45
Lens Type	3.6mm
Lens Options	Fixed
BLC	On
HLC	On
Gain Control	Auto
Sync Mode	Internal Sync
Day/Night	Auto Digital Day/Night
Digital Noise Reduction	2D
ATR	Wide Range ATW (1,800K to 10,500k)
Power Source	12VDC regulated supply required
Power Consumption	12VDC: 110mA (1.32W)
Operating Temp	14°F~122°F -10°C~50°C
Humidity	Less than 80% non-condensing
Dimensions (in mm)	4.08 x 3.09" 103.7 x 78.5mm
Weight (lbs gm)	0.35lbs 158.76g
Certifications	CE/FCC

Dimensions: mm/in



Ordering Info

- ED700B: Day/Night Mini Dome, Black, 720+ TVL, 3.6mm
- ED700W: Day/Night Mini Dome, White, 720+ TVL, 3.6mm

