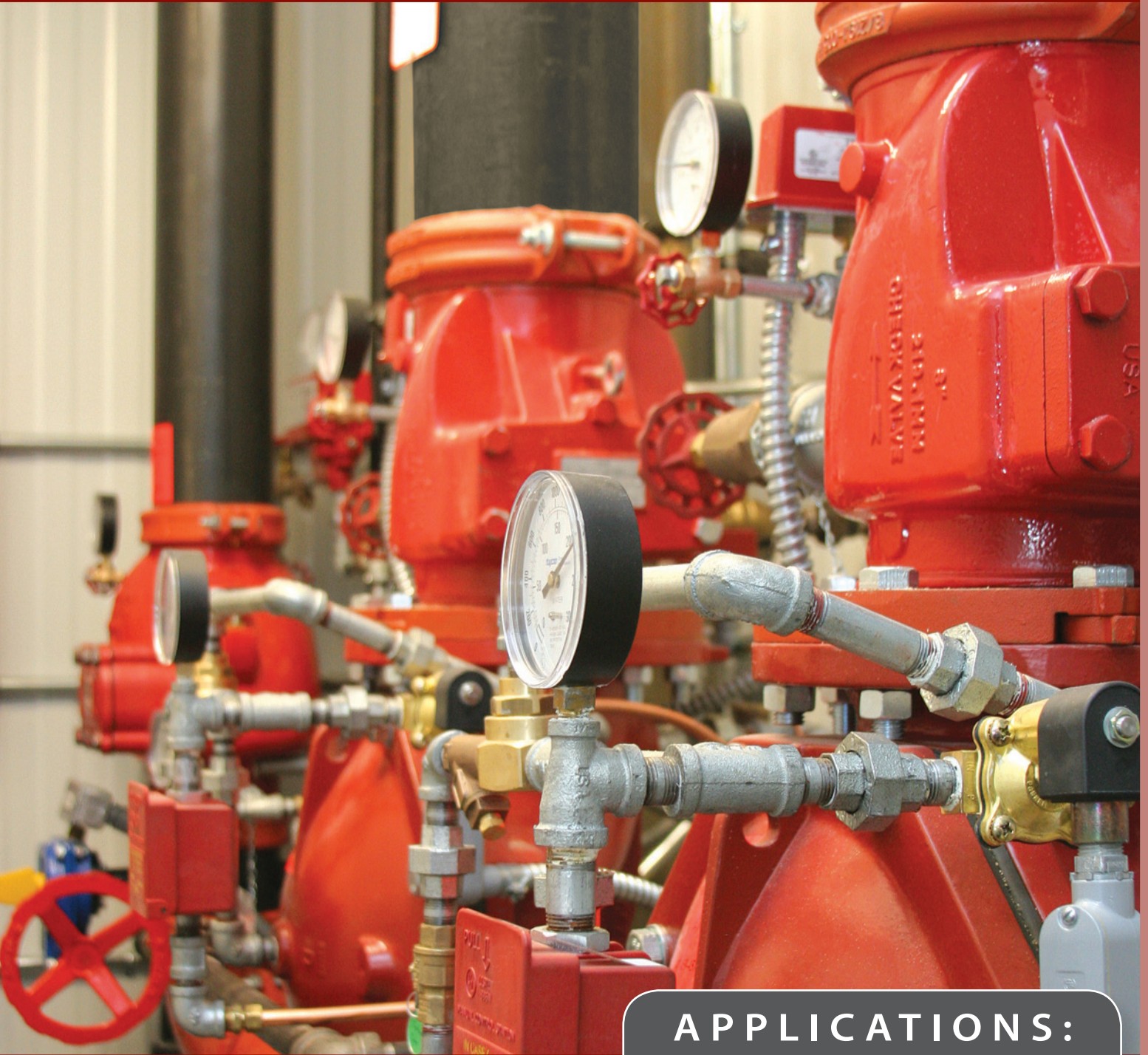


GENERAL PURPOSE VALVES



General Purpose Valves are for use in fire protection service applications where it is necessary to prevent reverse flow, or where system shut-off or sectional control is desired for closing a fire protection system after operation, or to facilitate testing.

APPLICATIONS:

- **Prevention of Reverse Flow**
- **System Shut-Off or Sectional Control**
- **Closure of Fire Protection After Operation**
- **Facilitation of Testing**

Always refer to the product's Technical Data Sheet for a complete description of all Listing and Approval criteria, design parameters, installation instructions, care and maintenance guidelines, and our limited warranty.

SYSTEM VALVES & DEVICES

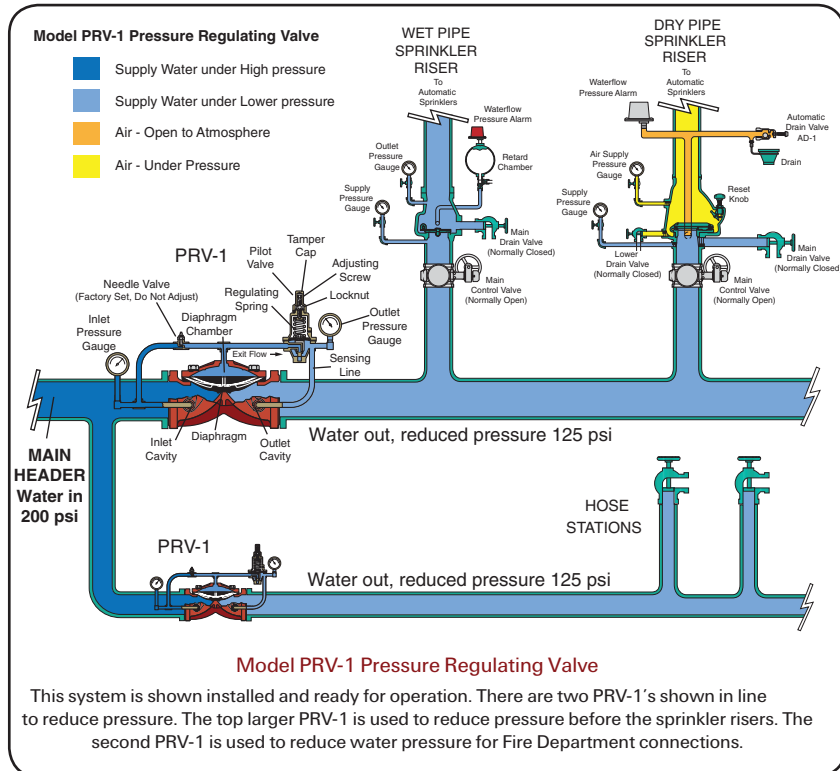
GENERAL PURPOSE VALVES

PRV-1

Pressure Regulating Valve – 2" thru 8" (DN50 thru DN200)

- The PRV-1 is intended to automatically maintain the outlet "set pressure" (static and residual) within a close range, regardless of fluctuations in the higher pressure inlet line or varying flow rates.
- Can be installed either vertically or horizontally
- Available with threaded, flanged, and cut groove inlet and outlet connections
- Grooved connections are suitable for use with grooved pipe couplings that are listed or approved for fire protection service
- One piece, one moving part diaphragm
- In-line service (for maintenance)
- Pilot valve provides for any outlet "set pressure", i.e., 80 to 225 psi (5,5 to 15,5 bar)
- Rated for use at a maximum pressure of 250 psi (17,2 bar)
- Factory outlet "set pressure" of 125 psi (8,6 bar)
- Field outlet "set pressure" range of 80 to 225 psi (5,5 to 15,5 bar)
- Listings and Approvals: UL, & FM

TECH DATA TFP1580



RV-1

Pressure Relief Valve – 2" thru 8" (DN50 thru DN200)

- Globe or angle pattern
- Installation in any orientation
- One-piece, one-moving-part diaphragm
- Ceramic enamel-coated interior
- Standard nylon-coated exterior
- Accurate pressure control
- In-line service
- No need to bleed trapped air from the diaphragm chamber

TECH DATA TFP1585

- Rated for use at a Maximum Inlet Pressure of 250 psi (17,2 bar)
- Listings and Approvals: UL & FM



CV-1F

Grooved Check Valve – 2" thru 10" (DN50 thru DN250)

- Can be installed either vertically or horizontally
- Cut groove inlet and outlet connections
- Suitable for use with grooved pipe couplings that are listed or approved for fire protection service

TECH DATA TFP1550

- Rated for use at a maximum pressure of 300 psi (20,7 bar)
- Listings and Approvals: UL, C-UL, FM



BFV-N

Grooved Butterfly Valve – 2½" thru 10" (DN65 thru DN250)

- Indicating type valves provide visual indication of whether the valve is open or closed
- Cut groove inlet and outlet connections
- Suitable for use with grooved pipe couplings that are listed or approved for fire protection service

TECH DATA TFP1510

- Rated for use at a maximum pressure of 300 psi (20,7 bar), or 175 psi (12,0 bar) for the 10" model
- Listings and Approvals: UL, C-UL, FM, Calif. State Fire Marshall



Wafer Butterfly Valve – 2" thru 12" (DN50 thru DN300)

- Indicating type valves provide visual indication of whether the valve is open or closed
- Wafer connections
- Suitable for use installation between ANSI Class 125 or 150 flanges without the need for flange gaskets

TECH DATA TFP1515

- Rated for use at a maximum pressure of 250 psi (17,2 bar)
- Listings and Approvals: UL, C-UL, FM, Calif. State Fire Marshall



Lug Butterfly Valve – 2" thru 12" (DN50 thru DN300))

- Indicating type valves provide visual indication of whether the valve is open or closed
- Lug connections
- Suitable for use installation between ANSI Class 125 or 150 flanges without the need for flange gaskets

TECH DATA TFP1520

- Rated for use at a maximum pressure of 250 psi (17,2 bar), or for dead end service the maximum pressure is 200 psi (13,8 bar)
- Listings and Approvals: UL, ULC, FM, Calif. State Fire Marshall



TRIM VALVES

- Designed for general service such as shut-off, throttling, or drain valves
- Provide positive shut-off under normal operating conditions

TECH DATA Contact Tyco for details



Always refer to the product's Technical Data Sheet for a complete description of all Listing and Approval criteria, design parameters, installation instructions, care and maintenance guidelines, and our limited warranty.

SYSTEM VALVES & DEVICES

GENERAL PURPOSE VALVES

LANSDALE POWERBALL 300 VALVE

- Bronze body butterfly valves are designed specifically for fire protection applications
- Models are available from 1" - 2½" NPT and from 1¼" - 2½" Grooved
- Feature slow closure that substantially minimizes water hammer
- May be used as sectional or small system control valves where a distinct visual indication of the valve status is required

TECH DATA

Contact Tyco for details

- Complete with Position Indicator and Integral Tamper Switch
- Rated for use at a maximum service pressure of 300psi (20.7bar)
- Listings and Approvals: UL, and FM



DP-1

Dry Pilot Actuator

- Dry Pilot Actuator is an auxiliary releasing device
- When the Model DP-1 actuates, it permits water pressure to be released from the deluge or preaction valve differential chamber, thereby allowing the deluge or preaction valve to open
- Designed for Preaction Valves having double interlock electric/pneumatic release

TECH DATA

TFP1380

- Rated for use at a maximum water supply pressure of 250 psi (17,2 bar) and a maximum system air (or nitrogen) pressure of 50 psi (3,4 bar)
- Listings and Approvals: UL, ULC, FM, and LPCB



ASV-1

Automatic Shut-Off Valve, Trim Component

- Intended for use with the Model DV-5 Deluge Valve in deluge and preaction systems
- Prevents inadvertent resetting of the DV-5 Valve
- Maximum Working Water Pressure: 250 psi (17,2 bar)
- Listings and Approvals: UL, C-UL, & FM

TECH DATA

TFP1384



FSV-1

Fail-Safe Valve, Trim Component

- Intended for use with the Model DV-5 Deluge Valve in certain types of trim arrangements for deluge and preaction systems
- Prevents inadvertent resetting of the DV-5 Valve
- Maximum Working Water Pressure: 250 psi (17,2 bar)
- Listings and Approvals: UL, C-UL, & FM

TECH DATA

TFP1386



Always refer to the product's Technical Data Sheet for a complete description of all Listing and Approval criteria, design parameters, installation instructions, care and maintenance guidelines, and our limited warranty.