

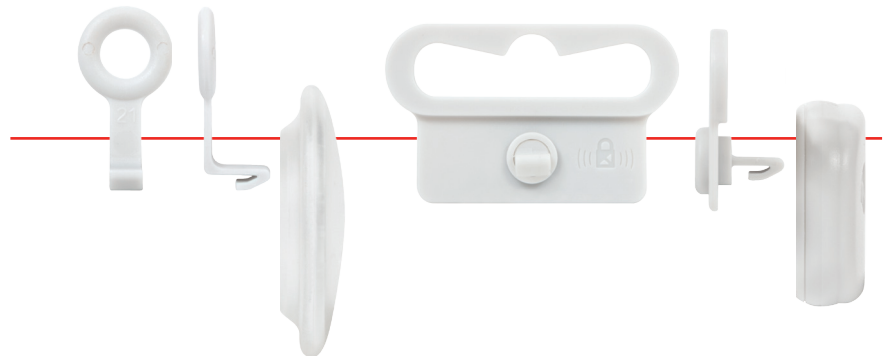
# iS PEG HOOK SYSTEM

Secure protection and increased visibility for hanging items



iS Single Peg Attachment

iS Universal Peg Attachment



A CHECKPOINT SPECIALTY PRODUCT

# iS PEG HOOK SYSTEM

CONSUMER CONVENIENCE WITH A HIGH LEVEL OF THEFT DETERRENCE



iS RF MVP Tag works with all Checkpoint EAS security systems, and the iS AM MVP Tag works with AM-compatible security systems.

## SPECIFICATIONS:

### iS PEG HOOK SYSTEM

#### iS Universal Peg Attachment:

1.77" W x 1.06" H  
(45mm x 27mm)

#### iS Single-Peg Attachment:

0.6" W x 1.06" H  
(15.3mm x 29.5mm)

#### iS RF MVP Tag:

1.68" Diam. x 0.410" Depth  
(42.7mm x 10.4mm)

#### iS AM MVP Tag:

1.59" L x 1.17" W x 0.453" D  
(40.4mm x 29.8mm x 11.5mm)

@Source Integration: Yes

**The iS Peg Hook System** is an anti-theft solution that can increase merchandise protection and customer convenience, without affecting branding. Among EAS solutions, these Checkpoint tags are a natural fit for high-profile, high-risk items normally kept behind glass. They attach quickly through single or multiple holes, and can be easily deactivated and removed at POS for re-use—or by the customer at home after purchase for one-time use. Protect your merchandise with this ideal solution: the Checkpoint iS Peg Hook System.

### Highlights:

- ✓ Attaches easily through single or double hole
- ✓ Allows goods to be removed from peg hook without assistance from store personnel
- ✓ Available in RF and AM technologies
- ✓ Quickly removable at POS for re-use, or by customer after purchase
- ✓ Difficult to defeat with common tools
- ✓ No interference with product branding
- ✓ Keeps products easily accessible on shelf
- ✓ Available for @Source or in-store integration
- ✓ Available exclusively from Checkpoint Systems



### Additional Specifications:

#### Attachments

#### Tags



iS Universal Peg

iS Single-Peg

iS RF MVP Tag

iS AM MVP Tag

	iS Universal Peg	iS Single-Peg	iS RF MVP Tag	iS AM MVP Tag
<b>Part Number</b>	10111723	10105662	10111666	10111726
<b>Technology</b>	N/A	N/A	RF only	AM only
<b>Frequency</b>	N/A	N/A	8.2 MHz <sup>1</sup>	52 kHz
<b>Case Count</b>	1,000	1,000	1,000	1,000

<sup>1</sup> ± 400 kHz



For details, scan this QR code or visit our website.

[www.CheckpointSystems.com](http://www.CheckpointSystems.com)