

EMD700

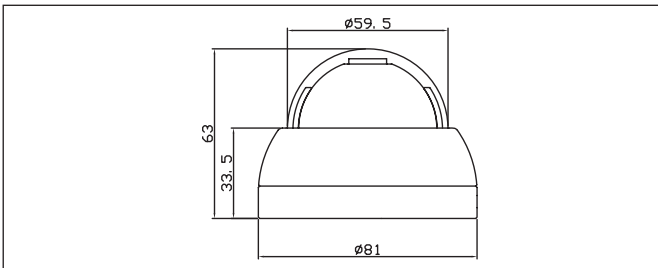
Outdoor Day/Night Vandal Mini Dome Camera



Features

- Ultra resolution of over 720 horizontal TV lines for astounding image quality
- Exview HAD II sensor delivers amazing ultra high sensitivity of .05 lux – very low light sensitivity without DSS low light boost - Zero Ghosting guaranteed
- Astounding image quality from the 3.6mm lens
- Digital Wide Dynamic Range expansion to deliver properly exposed images despite unbalanced lighting in the scene
- Provides 2D-Noise Reduction to improve picture clarity while enabling DVRs to improve disk storage utilization
- Easy to use OSD setup menu
- Compact mini dome for discreet surveillance a great option for mobil applications
- Vandal Resistant construction able to withstand intentional damage
- The flexible angle viewing with its 3 Axis rotation design allows wall or ceiling mounting
- IP67 weather resistant rating means that it will withstand the elements of outdoor conditions

Dimensions: mm/in



Ordering Info

- EMD700B:** Day/Night Dome, Black, 720+ TVL, 3.6mm
EMD700W: EMD700W: Day/Night Dome, White, 720+ TVL, 3.6mm

U 720+ Ultra Series TVL	COLOR	Waterproof IP67	POWER 12VDC	Vandal Resistant	OSD
DIGITAL WDR	2D Noise Reduction	HSBLC	3-Axis	Extreme Cold -40 F	

Specifications

Part Number	EMD700
Pickup Device	1/3" 960H Sony Exview HAD CCD II
Video Format	NTSC or PAL
Picture Elements	1020 x 508 (NTSC) 1020 x 508 (NTSC)
Effective Pixels (NTSC PAL)	976 x 494 (NTSC) 976 x 582 (PAL)
Scanning System	2:1 Interlace
Scanning Frequency	H: 15.734 KHz, V: 59.94 Hz H: 15.625KHz, V: 50Hz
Horizontal Resolution	720+ TVL
Sensitivity	0.05 lux/F2.0
S/N Ratio	Over 50dB (AGC off)
Electronic Shutter	1/60s~1/100,000s
Video Output	BNC 1.0Vp-p 75Ω
Gamma Correction	0.45
Lens Type	3.6mm
Lens Options	Fixed
BLC	On
Gain Control	Auto
White Balance	Wide Range ATW
Sync Mode	Internal Sync
Day/Night	Auto Digital Day/Night
OSD Menu	Multiple Functions
Digital Noise Reduction	2D-DNR
Environmental	IP67 Waterproof
Power Source	12VDC
Power Consumption	less than 110mA
Operating Temp	-40°F~122°F -40°C~50°C
Humidity	Less than 80% non-condensing
Dimensions (in mm)	3.19" x 2.48" 81 x 63 mm
Weight (lbs gm)	0.55lbs 113g
Vandal	Resistant
Certifications	CE/FCC

