

EHD730

Outdoor True Day/Night IR 3-Axis Vandal Dome Camera



Features

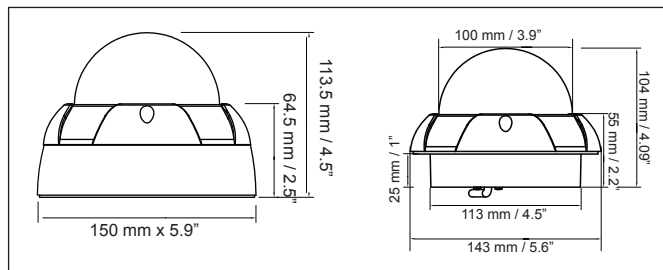
- Ultra resolution of over 720 horizontal TV lines for astounding image quality
- Exview HAD II sensor delivers amazing ultra high sensitivity of .05 lux – very low light sensitivity without DSS low light boost - Zero Ghosting guaranteed
- Megapixel-Varifocal 2.8~12mm lens with external zoom & focus controls captures desired field of view
- Adaptive Tone Curve Reproduction (ATR)/Digital Wide Dynamic Range expansion) to deliver properly exposed images despite unbalanced lighting in the scene
- Provides 2D-Noise Reduction to improve picture clarity while enabling DVRs to improve disk storage utilization
- Easy to use OSD setup menu
- Vandal Resistant construction able to withstand intentional damage
- Digital Wide Dynamic Range expansion to deliver properly exposed images despite bright light sources, deep shadows and/or unbalanced lighting in the same scene
- The flexible angle viewing with its 3 Axis rotation design allows wall or ceiling mounting
- IP66 weather resistant rating means that it will withstand the elements of outdoor conditions
- Up to 100 feet of IR distance

| | | | | | | |
|--------------------------|---------------------------|-----------------|----------------------------------|---------------------------------|-------------------------|---------------------------|
| U Ultra Series | 720+ TVL | True D/N | IP66 Weather Resistant | POWER 12VDC/ 24VAC | Vandal Resistant | OSD |
| DIGITAL WDR | 2D Noise Reduction | HSBLC | Flush or Surface Mount | IR Distance 100 Feet | 3-Axis | Extreme Cold -40°F |

Specifications

| Part Number | EHD730 |
|-------------------------------|---|
| Pickup Device | 1/3" Sony Exview HAD II 960H High Sensitivity Interline CCD |
| Video Format | NTSC or PAL |
| Picture Elements | 1020 x 508 (NTSC) 1020 x 508 (NTSC) |
| Effective Pixels (NTSC PAL) | 976 x 494 (NTSC) 976 x 582 (PAL) |
| Scanning System | 2:1 Interlace |
| Horizontal Resolution | 720+ TVL |
| Sensitivity | 0 lux with IR on .05 lux native from sensor |
| S/N Ratio | Over 50dB (AGC off) |
| Electronic Shutter | 1/60s~1/100,000s |
| Video Output | BNC 1.0Vp-p 75Ω |
| Gamma Correction | 0.45 |
| Lens Type | 2.8-12mm Megapixel DC Iris |
| Lens Options | Varifocal |
| BLC | OFF/BLC/HSBLC Selectable |
| Gain Control | Low light auto, bright light auto, manual selectable |
| White Balance | ATW/One Push/User2/Anti-Crawl/Manual/Push Lock |
| Sync Mode | Internal (plus Anti-Chroma Crawl White Balance option) |
| IR Distance | up to 100' |
| Day/Night | True Day & Night, With motorized IR Cut Filter; choose Color, B/W, Auto |
| OSD Menu | Multiple Functions |
| OSD Languages | English, Spanish, Portuguese, German, Russian, Japanese, Chinese, French |
| Digital Noise Reduction | On/OFF |
| ATR | On/Off (3 levels each adjustable for luminance and contrast) |
| Wide Dynamic Range | On/Off (3 levels each adjustable for luminance and contrast) |
| Mirror | Off/On |
| Motion Detection | Off/On for 4 selectable zones (On screen indication on alarm) |
| Privacy Mask | Off/On for 4 selectable zones |
| Environmental | IP66 Weather Resistant |
| Power Source | 12VDC/24VAC |
| Power Consumption | 2.16W max 2.9W max |
| Operating Temp | -40°F~-122°F -40°C~50°C |
| Dimensions (in mm) | Surface: 6.14" (156mm) dia. x 5.1" (129.5mm) high Flush: 5.63" (143mm) dia. X 3.11" (79mm) visible & .98" (25mm) behind surface |
| Weight (lbs gm) | 3 lbs 1360g |
| Vandal | Vandal |
| Certifications | CE/FCC |

Dimensions: mm/in



Ordering Info

EHD730: Day/Night IR Dome, Beige, 720 TVL, 2.8-12mm

