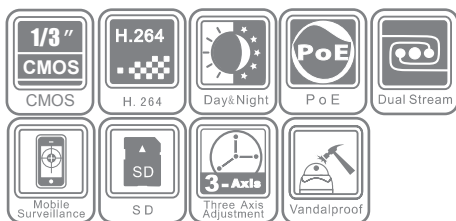


# DS-2CD7253F-EIZ(H)

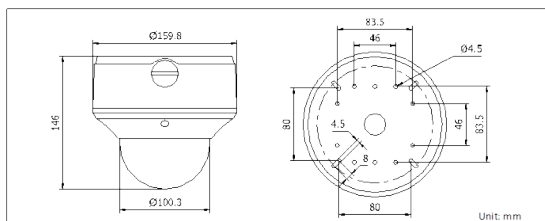
# 2 MP Network Dome Camera



## Key features

- 1/3" Progressive Scan CMOS
- H.264 / MPEG4 / MJPEG
- Up to 2 MP (1600 x 1200) Resolution
- HD 720P Real-time Video
- True Day/Night
- Motorized Varifocal Lens
- e-PTZ Control
- Up to 30m (90 ft) IR LED
- IP66
- Vandal Proof Housing

## Dimensions



## Specifications

	DS-2CD7253F-EIZ	DS-2CD7253F-EIZH
<b>Camera</b>		
Image sensor	1/3" Progressive Scan CMOS	
Min. illumination	0.8 lux (F1.6, AGC on), 0.4 lux (F1.6, AGC on, sensitivity x5); 0 Lux with IR.	
Shutter time	1/30 s to 1/100,000 s	
Lens	2.7 – 9 mm @ F1.6, Angle of view: 101° - 30.4°	
Lens control	Motorized	
Lens mount	Φ 14	
Auto iris	DC drive	
Angle adjustment	Pan: 0° ~ 355°, tilt: 0° ~ 80°, rotation: 0° ~ 355°	
Day & night	IR cut filter with auto switch	
<b>Compression Standard</b>		
Video compression	H.264 / MPEG4 / MJPEG	
Bit rate	32 Kbps – 16 Mbps	
Dual stream	Yes	
<b>Image</b>		
Max. image resolution	1600×1200	
Frame rate	60Hz:15fps (1600×1200),15fps (1600×912),25fps (1280×960),30fps (1280×720)	
Image settings	Saturation, brightness, contrast adjustable through client software or web browser	
<b>Network</b>		
Alarm trigger	Motion detection, tampering alarm, network disconnect , IP address conflict, storage exception	
Protocols	TCP/IP, HTTP, DHCP, DNS, DDNS, RTP, RTSP, PPPoE, SMTP, NTP	
Security	User Authentication, Watermark	
<b>Interface</b>		
Communication interface	1 RJ45 10M/100M Ethernet interface	
Video output	1Vp-p composite output (75 Ω/RCA)	
Local storage	Built-in Micro SD slot, up to 32 GB	
Reset button	Yes	
<b>General</b>		
Operating conditions	-10 °C - 60 °C (14 °F – 140 °F) Humidity 90% or less (non-condensing)	-40 °C – 60 °C (-40 °F – 140 °F) with heater and fan on
Ingress Protection level	IP66	
Power supply	24 V AC ± 10%, PoE (802.3af)	24 V AC ± 10%, High PoE (802.3at)
Power consumption	Max.12W	Max. 24W with heater on
Impact protection	IEC60068-2-75Eh, 50J; EN50102, up to IK10	
IR range	Approx. 20 to 30 meters (60 - 90 ft)	
Dimensions	Φ 159.8 × 146 mm (Φ 6.29" × 5.75")	
Weight	2100g (4.62 lbs)	

## Available models

DS-2CD7253F-EIZ, DS-2CD7253F-EIZH

\* "-H" series support heater

\* "-Z" is equipped with Motorized Varifocal Lens

## Accessories

