


# Product guide

Network video solutions



# Smart and innovative products from the global market leader.

A close-up photograph of a hand holding a black, cylindrical camera lens. The lens is held between the thumb and index finger, with the rest of the hand visible in the background. The lens itself is black with a silver-colored ring around the front element. The background is blurred, showing what appears to be a modern office or industrial setting with blue and white tones.

When it comes to network surveillance video, Axis gives you a complete range of solutions for numerous industries and applications. Our world-leading solutions are easy to install, configure and operate, whatever your needs may be.

# Table of contents

<b>About Axis</b>	
What we do	2
Our products & technology	3
Product highlights	4
<b>Product portfolio</b>	
<b>Network cameras</b>	<b>6</b>
Fixed network cameras	8
Fixed dome network cameras	18
Pan/tilt/zoom (PTZ) network cameras	26
Thermal network cameras	33
<b>Video encoders</b>	<b>36</b>
<b>Naming structure</b>	<b>41</b>
<b>Hardware accessories</b>	<b>42</b>
Mounting	44
Connecting	44
Add-on devices	45
Tools and extras	45
<b>Video management</b>	<b>46</b>
AXIS Camera Companion	48
AXIS Camera Station	49
Partner solutions	50
Surveillance as a cloud-based service	50
<b>Smart technologies</b>	<b>51</b>



# What we do

Axis offers intelligent security solutions together with partners, combining knowledge with innovative products, enabling people to create a smarter and safer world.

## **World-leading intelligent security solutions**

Axis' innovative video surveillance products and solutions are used all over the world. The demand for network video solutions is increasing rapidly across all areas where Axis is present: retail, transport, banks, city surveillance, industry, education, healthcare, infrastructure, and the public sector.

## **A global company with a local presence**

Axis is a fast-growing Swedish-based company that acts globally via its own offices, representatives, and well-developed collaborations with partners. As the global market leader, Axis strives to be the driving force behind the development of innovative and intelligent security solutions as well as a role model when it comes to conducting business in a responsible and sustainable way.

## **A wide portfolio of products and solutions**

When Axis invented and launched the world's first network camera in 1996, the company initiated the market's ongoing shift from analog to digital video surveillance. Among some of Axis' subsequent innovations are the world's first video encoder, the HDTV network camera, the thermal network camera, the pioneering Lightfinder technology, and the first non-proprietary and open IP-based access controller with built-in web-based software.

## Our products & technology

Our security cameras, video encoders, accessories and access control products are based on open industry standards. The products integrate easily with Axis' video management software or with a partner product to build a complete security or surveillance solution.

### Superior image quality

The usability of video images is key to a good video surveillance system. Axis offers technologies – HDTV, Wide Dynamic Range, infrared and Lightfinder – which ensure clear images in most lighting conditions.

### Intelligent applications

AXIS Camera Application Platform is an open application platform that enables the development of third party applications that can be downloaded and installed on Axis network cameras and video encoders.

### Secure communication

Axis understands network security and our products comply with all viable standards that affect network security.

### Easy installation

In large-scale systems with hundreds of cameras, easy installation significantly reduces the system cost. Axis' products offer several features that facilitate installation.

### Efficient operation

Efficient and reliable operation is fundamental to any surveillance system. Axis offers smart products and system solutions for a wide range of applications to maximize uptime and support right operator decisions.



## Who we work with

### Retail

With Axis network video, you can achieve greater security and loss prevention, optimize store management, and significantly improve store performance.

### Transportation

Axis provides the means to improve security, operations, and overall passenger experience at airports, seaports and public transit systems.

### Education

From daycare centers to universities, Axis network video helps deter vandalism and increase student and staff safety.

### Industrial

Axis network video is used in a multitude of industrial applications, such as remote monitoring of manufacturing lines, incident detection and perimeter security.

### Banking and finance

Using existing equipment and infrastructure, banks can deploy Axis video surveillance systems that deliver exceptional image detail for easy identification.

### Healthcare

Axis allows hospitals to efficiently monitor emergency departments, passageways, and restricted areas to ensure the protection of staff, patients, and sensitive information.

### City surveillance

Axis network video is an essential tool for creating safe cities and protecting the public. In emergencies, cameras can help police or firefighters to quickly focus their action.

### Critical infrastructure

Whether it is a solar plant, an electrical substation, or a waste management facility, Axis network video can help ensure safe, secure, and uninterrupted activity.

### Government

Axis network video helps protect all kinds of public buildings, from museums and offices to libraries and prisons.

# “Hello, we’re new in the family.”

Axis remains the market leader in network video products since it introduced the world’s first network camera in 1996. Some of our latest innovations are:



AXIS Q19 Series now includes high-performance bullet-style cameras.



AXIS Q60 Series now includes stainless steel pan/tilt/zoom cameras.



AXIS Q16 Series includes cameras with Lightfinder and WDR – Forensic Capture.

Visit [www.axis.com](http://www.axis.com) for more new products.

AXIS M30 Series with outdoor-ready fixed mini domes with 360°/180° panoramic views.



AXIS P14 Series includes 4K UltraHD resolution.



AXIS F Series – Flexible cameras that let you see more.



# Network cameras





# The broadest portfolio for security and surveillance.

Axis' cameras cover a variety of application needs, from robust outdoor cameras for harsh climates, to discreet products for sensitive environments. The cameras provide a number of capabilities – 4K Ultra HD, HDTV/megapixel resolution, wide dynamic range, built-in IR, and Lightfinder to name a few –

which ensure clear video even in difficult lighting conditions. Axis' cameras also provide advanced video analytics features, such as motion detection, audio detection, and tampering alarm.

Axis network cameras are ONVIF Profile S compliant.

## Types of network cameras



### Fixed network cameras

Deterrent or highly discreet cameras with a fixed or exchangeable lens.



### Fixed dome network cameras

With compact design for discreet and efficient surveillance.



### Pan/Tilt/Zoom network cameras

Enabling wide area coverage and great details when zooming in.



### Thermal network cameras

Securing an area or a perimeter in complete darkness.

Every Axis product has a unique naming structure that lets you know its functions and capabilities at a glance. Find out more on page 41.

# Fixed network cameras



## For a wide range of video surveillance applications

A fixed network camera has a fixed viewing direction once it is mounted. It may come with a fixed, varifocal, or motorized zoom lens, and the lens may be exchangeable on some cameras.

Axis' indoor and outdoor fixed camera offerings include the more traditional camera type where the camera and the direction in which it is pointing are clearly visible, as well as highly discreet cameras that are designed to blend into the environment and are difficult to discover.

## AXIS Q17 Network Camera Series

Reliable surveillance with high-quality identification

AXIS Q17 Fixed Network Cameras are day and night HDTV cameras for the professional market's demands. They are ideal for securing areas such as streets and intersections, casinos, passport controls, airports and railway stations where high-quality identification is needed. AXIS Q17 Network Cameras offer zoom, autofocus, OptimizedIR, enhanced video motion detection, audio detection, active tampering alarm, Gatekeeper functionality, AXIS Camera Application Platform, edge storage, PoE, pixel counter and day/night functionality. The outdoor-ready models feature Axis' Arctic Temperature Control.

### AXIS Q1765-LE / AXIS Q1765 LE PT Mount

Bullet-style, outdoor-ready camera with integrated IR, 18x zoom and HDTV 1080p

- > Megapixel/HDTV: 2 MP/HDTV 1080p
- > Max video resolution: 1920 x 1080
- > 18x zoom
- > Two-way audio
- > 2 configurable alarm in/outputs\*)
- > Serial port for communication with pan-tilt motors\*\*)



\*) AXIS Q1765-LE

\*\*\*) AXIS Q1765 LE PT Mount

### AXIS Q1755/-E

HDTV camera with zoom

- > Megapixel/HDTV: 2 MP/HDTV 1080i
- > Max video resolution: 1920 x 1080
- > 10x zoom
- > OptimizedIR
- > Two-way audio and built-in microphone\*)
- > 2 configurable alarm in/outputs



\*) AXIS Q1755

## AXIS Q16 Network Camera Series

Outstanding image performance in demanding lighting conditions

The award-winning AXIS Q16 Fixed Network Cameras offer outstanding models supporting WDR – Dynamic Capture and WDR – Forensic Capture capabilities for surveillance in highly variable lighting conditions, and models supporting Lightfinder technology for environments with poor lighting conditions. Models supporting high frame rate ensure that quick movements are captured in more details. The outdoor-ready models feature Axis' Arctic Temperature Control.

### AXIS Q1615/-E

Indoor or outdoor-ready models for forensic details and high speed

- > Megapixel/HDTV: 2 MP/HDTV 1080p
- > Max video resolution: 1920 x 1200
- > 50/60 fps
- > Lightfinder
- > WDR – Forensic Capture
- > Electronic Image Stabilization
- > P-Iris
- > Two-way audio and built-in microphone\*)



\*) AXIS Q1615

### AXIS Q1614/-E

Indoor or outdoor-ready models with outstanding HDTV 720p video performance in 50/60 fps

- > Megapixel/HDTV: 1 MP/HDTV 720p
- > Max video resolution: 1280 x 960
- > 50/60 fps
- > WDR – Dynamic Capture
- > P-Iris
- > Two-way audio and built-in microphone\*)

\*) AXIS Q1614



### AXIS Q1604/-E

Indoor or outdoor-ready models for outstanding performance in intense backlight conditions

- > Megapixel/HDTV: 1 MP/HDTV 720p
- > Max video resolution: 1280 x 960
- > WDR – Dynamic Capture
- > P-Iris
- > Two-way audio and built-in microphone\*)

\*) AXIS Q1604



### AXIS Q1602/-E

Indoor or outdoor-ready models for outstanding video in poor light conditions

- > Max video resolution: 768 x 576
- > Lightfinder technology
- > WDR
- > Two-way audio and built-in microphone\*)

\*) AXIS Q1602



## AXIS P85 Network Camera Series

Discreet, eye-level cameras for identification

AXIS P85 Network Camera Series offers eye-level, pinhole cameras installed in a pipe for discreet, indoor video surveillance – ideal for retail, hotel and banking environments. For placement near exits of buildings, AXIS P85 cameras are positioned to look straight at a person's face for more reliable identification even when the person is wearing a hood or baseball cap. AXIS P85 Cameras offer video motion detection, active tampering alarm, AXIS Camera Application Platform, PoE and digital PTZ.

### AXIS P8514

Discreet, eye-level cameras for identification

- > Megapixel/HDTV: 1 MP/HDTV 720p
- > Max video resolution: 1280 x 800
- > Choice of colors
- > Easy to install



## AXIS P14 Network Camera Series

Compact and cost-effective surveillance for any environment

AXIS P14 Network Cameras constitute a series of outdoor-ready bullet-style cameras. These cameras are ideal for 24/7 video surveillance, in exposed outdoor areas such as parking lots, service stations and for general indoor surveillance purposes where a compact camera is needed. AXIS P14 Series offers models with exceptional image quality from 1080p resolution up to 4K Ultra HD. All AXIS P14 Network Cameras offer video motion detection, AXIS Camera Application Platform, P-Iris, edge storage, PoE, pixel counter, remote focus and zoom and day/night functionality.

### AXIS P1428-E

Compact and cost-effective 4K surveillance for exceptional details

- > Megapixel/HDTV: 8 MP/4K Ultra HD resolution
- > Max video resolution: 3840 x 2160
- > Input/output ports for external devices



### AXIS P1427-E/-LE

Compact and cost-effective 5-megapixel surveillance

- > Megapixel/HDTV: 5 MP/1080p
- > Max video resolution: 2592 x 1944
- > Input/output ports for external devices
- > OptimizedIR\*)

\*) AXIS P1427-LE



### AXIS P1425-E/-LE

Compact and cost-effective HDTV surveillance with OptimizedIR

- > Megapixel/HDTV: 2 MP/HDTV 1080p
- > Max video resolution: 1920 x 1080
- > Input/output ports for external devices
- > OptimizedIR\*)

\*) AXIS P1425-LE



### AXIS P1405-E/-LE

Compact and cost-effective HDTV surveillance with built-in IR

- > Megapixel/HDTV: 2 MP/HDTV 1080p
- > Max video resolution: 1920 x 1080
- > Built-in IR\*)

\*) AXIS P1405-LE



## AXIS P13 Network Camera Series

Superb image quality for video surveillance in any environment

AXIS P13 Network Cameras are suitable for a wide range of video surveillance applications, including government and industrial buildings, retail environments, airports, railway stations and schools. All models are robust, light sensitive and offer CS-mount lens, audio support, alarm in-/outputs, video motion detection, audio detection, active tampering alarm, AXIS Camera Application Platform, edge storage, PoE, digital PTZ, pixel counter, remote back focus and day/night functionality. The outdoor-ready models feature Axis' Arctic Temperature Control.

### AXIS P1357/-E

Exceptional video surveillance in HDTV/5 MP

- > Megapixel/HDTV: 5 MP/1080p
- > Max video resolution: 2592 x 1944
- > P-Iris
- > Two-way audio and built-in microphone\*)

\*) AXIS P1357



### AXIS P1355/-E

Indoor or outdoor-ready excellent fixed camera for exceptional video surveillance with 1080p HDTV quality

- > Megapixel/HDTV: 2 MP/1080p
- > Max video resolution: 1920 x 1080
- > P-Iris
- > Two-way audio and built-in microphone\*)

\*) AXIS P1355



### AXIS P1354/-E

Indoor or outdoor-ready light sensitive fixed camera for video surveillance with HDTV quality

- > Megapixel/HDTV: 1 MP/720p
- > Max video resolution: 1280 x 960
- > Lightfinder technology
- > Two-way audio and built-in microphone\*)

\*) AXIS P1354



### AXIS P1353/-E

Indoor or outdoor-ready light sensitive fixed camera for video surveillance in any environment

- > Max video resolution: 800 x 600
- > Lightfinder technology
- > Two-way audio and built-in microphone\*)

\*) AXIS P1353



## AXIS P12 Network Camera Series

### Miniature HDTV cameras for exceptional discreet surveillance

AXIS P12 Network Camera Series offers tiny cameras for exceptionally discreet indoor and outdoor surveillance. The design allows the cameras to easily blend in with the environment. They are ideal for ATMs (automated teller machines), banks, stores, hotels, architectural buildings and offices. The cameras can be installed on or flush-mounted in walls or ceilings, in elevators or in limited spaces such as in ATMs or doorways. All models offer video motion detection, active tampering alarm, AXIS Camera Application Platform, PoE, pixel counter and edge storage. They come with a IP66-rated sensor unit.

#### AXIS P1224-E

Miniature wide-angle HDTV camera for discreet outdoor surveillance

- > Megapixel/HDTV: 720p
- > Max video resolution: 1280 x 720
- > Horizontal angle of view: 145°



#### AXIS P1214/-E

Miniature HDTV camera for discreet indoor or outdoor surveillance

- > Megapixel/HDTV: 720p
- > Max video resolution: 1280 x 720
- > Horizontal angle of view: 57° (AXIS P1214), 81° (AXIS P1214-E)



#### AXIS P1204

Miniature HDTV pinhole camera for discreet surveillance

- > Megapixel/HDTV: 720p
- > Max video resolution: 1280 x 720
- > Horizontal angle of view: 57°



## AXIS M2014-E Network Camera

World's smallest HDTV bullet-style network camera

AXIS M2014-E is a high-performance, compact bullet-style network camera designed for maximum flexibility and ease of installation. The camera's functional and compact form factor makes it perfect for installations in retail stores, boutiques, hotels and small offices. AXIS M2014-E is outdoor-ready IP66-rated and offer video motion detection, active tampering alarm, AXIS Camera Application Platform, PoE and edge storage.

### AXIS M2014-E

World's smallest HDTV bullet-style network camera

- > Megapixel/HDTV: 720p
- > Max video resolution: 1280 x 720
- > Horizontal angle of view: 81°



## AXIS M11 Network Camera Series

Compact and affordable cameras for professional surveillance

AXIS M11 Network Camera Series offers professional and cost-effective fixed cameras suitable for a wide range of video surveillance applications, such as retail as well as hotels and other office buildings. All models come with CS-mount lens and support PoE.

### AXIS M1145/-L

Compact and affordable 1080p HDTV day and night camera with OptimizedIR\*

- > Megapixel/HDTV: 2 MP/1080p
- > Max video resolution: 1920 x 1080
- > Day and night functionality
- > P-Iris
- > Built in IR LEDs and OptimizedIR\*)
- > I/O support
- > Edge storage
- > Horizontal angle of view: 95°-34°

\*) AXIS M1145-L



### AXIS M1144-L

Compact and affordable HDTV camera with built-in IR illumination

- > Megapixel/HDTV: 1 MP/1080p
- > Max video resolution: 1280 x 800
- > Day and night functionality
- > DC-iris
- > Built in IR LEDs
- > I/O support
- > Edge storage
- > Horizontal angle of view: 87°-40°



### AXIS M1114-E

Outdoor-ready compact and adaptable HDTV camera for professional surveillance

- > Megapixel/HDTV: 1 MP/720p
- > Max video resolution: 1280 x 800
- > Horizontal angle of view: 77°-29°





**AXIS M1114**

Compact and adaptable HDTV camera for professional surveillance

- > Megapixel/HDTV: 1 MP/720p
- > Max video resolution: 1280 x 800
- > Horizontal angle of view: 77°–29°



**AXIS M1113/-E**

Compact and adaptable high-resolution camera for professional surveillance

- > Max video resolution: 800 x 600
- > Horizontal angle of view: 65°–25°



**AXIS M1104**

Compact and affordable HDTV camera for professional surveillance

- > Megapixel/HDTV: 1 MP/720p
- > Max video resolution: 1280 x 800
- > Horizontal angle of view: 80°



**AXIS M1103**

Compact and affordable high-resolution camera for professional surveillance

- > Max video resolution: 800 x 600
- > Horizontal angle of view: 66°



## AXIS M10 Network Camera Series

Smallest and smartest network cameras from the market leader

AXIS M10 Network Camera Series offers small and smart cameras, ideal for securing locations such as small businesses, boutiques, restaurants, hotels or residences. The cameras offer best-in-class image quality, professional monitoring capabilities and support for edge storage. All cameras except AXIS M1054 offer adjustable focus.

### AXIS M1054

Smallest and smartest HDTV network camera from the market leader

- > Megapixel/HDTV: 1 MP/720p
- > Max video resolution: 1280 x 800
- > Two-way audio with built-in mic and speaker
- > I/O ports
- > PIR sensor and illumination LED
- > Horizontal angle of view: 84°
- > PoE



### AXIS M1034-W

Smallest and smartest wireless HDTV network camera from the market leader

- > Megapixel/HDTV: 1 MP/720p
- > Max video resolution: 1280 x 800
- > Wireless
- > Two-way audio with built-in mic and speaker
- > I/O ports
- > PIR sensor and illumination LED
- > Horizontal angle of view: 80°



### AXIS M1033-W

Smallest and smartest wireless SVGA network camera from the market leader

- > Max video resolution: 800 x 600
- > Wireless
- > Two-way audio with built-in mic and speaker
- > I/O ports
- > PIR sensor and illumination LED
- > Horizontal angle of view: 67°



### AXIS M1025

Smallest HDTV 1080p network camera with HDMI and edge storage

- > Megapixel/HDTV: 2 MP/1080p
- > Max video resolution: 1920 x 1080
- > HDMI output (Micro) in HDTV 720p
- > PoE
- > Horizontal angle of view: 94°



### AXIS M1014

Smallest HDTV network camera with edge storage

- > Megapixel/HDTV: 720p
- > Max video resolution: 1280 x 800
- > Horizontal angle of view: 80°



### AXIS M1013

Smallest network camera with edge storage

- > Max video resolution: 800 x 600
- > Horizontal angle of view: 67°



### AXIS M1004-W

Affordable wireless HDTV network camera

- > Megapixel/HDTV: 1 MP/720p
- > Max video resolution: 1280 x 800
- > Wireless
- > I/O ports
- > Horizontal angle of view: 80°



## AXIS F Network Camera Series

Flexible cameras that let you see more

AXIS F Network Camera Series offers flexible, high-performance cameras that support wide dynamic range and HDTV 1080p for superb image detail in extremely discreet indoor, outdoor and mobile surveillance applications. They are ideal for ATMs (automated teller machines), banks, stores, hotels, as well as rugged environments such as emergency vehicles. Based on a divided network camera concept, AXIS F Series comprises AXIS F41 Main Unit and AXIS F Sensor Units.

### AXIS F41 Main Unit

Rugged design with WDR – Forensic Capture and HDTV 1080p

- > Megapixel/HDTV: 2 MP/1080p
- > Max video resolution: 1920 x 1080
- > 50/60 fps
- > WDR – Forensic Capture
- > Rugged, easy-to-install design
- > Two-way audio



### AXIS F1015 Sensor Unit

Varifocal lens and HDTV resolution for extremely discreet indoor surveillance

- > Flexible, discreet design for indoor use
- > Varifocal lens with HDTV 1080p resolution



### AXIS F1005-E Sensor Unit

Rugged design for extremely discreet indoor, outdoor and mobile surveillance

- > Flexible, rugged design for indoor, outdoor and mobile use
- > Fixed lens with HDTV 1080p resolution
- > Wide 113° horizontal field of view



# Fixed dome network cameras



## With compact design for discreet surveillance

A fixed dome camera is a compact camera solution with a dome casing. You benefit from its discreet, non-obtrusive design, and also from the fact that it is difficult to see in which direction the camera is pointing. In addition, the camera's dome casing design offers efficient protection against e.g. redirection and defocusing.

## AXIS Q35 Network Camera Series

Durable and reliable fixed domes with full HDTV at up to 60 fps.

AXIS Q35 Network Camera Series consists of high-performing, vandal-resistant, indoor and outdoor-ready fixed domes that deliver high image quality in full HDTV at up to 60 fps. The cameras' Wide Dynamic Range (WDR) – Forensic Capture capability provides perfectly balanced video quality in scenes with strong variations in light, while the Lightfinder technology enables outstanding image usability in poor light. The cameras can seamlessly transition between handling WDR and low-light conditions. AXIS Q35 Series also supports Axis' Electronic Image Stabilization, barrel distortion correction and include optical zoom for monitoring. The indoor AXIS Q3505-V has IK10 impact resistance and IP52-rated dust and water protection. The outdoor-ready AXIS Q3505-VE has an IK10+ rating and can withstand a minimum of 50 joules of impact. All models are vibration- and shock-resistant. The cameras have been designed for efficient installation with features such as versatile cable management, remote zoom and focus, leveling assistant and auto rotation. AXIS Q35 Series fixed domes are ideal for high-security applications in areas such as cities, airports, railway stations, and industrial and critical infrastructure facilities.

### AXIS Q3505-V/VE

Durable and reliable fixed domes with full HDTV at up to 60 fps and top-of-the-line image usability

- > Megapixel/HDTV: 2.3 MP/HDTV 1080p
- > Max video resolution: 1920 x 1200 (WUXGA)
- > Two-way audio
- > Alarm in-/outputs



## AXIS P39-R Network Camera Series

High-performance cameras for onboard surveillance

The AXIS P39-R Network Camera Series is specially designed for video surveillance in buses, trains, subway cars and emergency vehicles. These compact, rugged and discreet cameras have protection against dust and water, and can withstand tough conditions such as vibrations, shocks, bumps and temperature fluctuations. All models include features such as video motion detection, tampering alarm, support for AXIS Camera Application Program, digital PTZ, pixel counter, PoE and edge storage. Traffic Light mode helps to better distinguish colors of traffic lights in very dark scenes.

### AXIS P3915-R

High-performance full HDTV camera with audio for onboard surveillance

- > Megapixel/HDTV: 2 MP/HDTV 1080p
- > Max video resolution: 1920 x 1080
- > Audio in
- > Alarm in-/outputs



### AXIS P3905-R

High-performance full HDTV camera for onboard surveillance

- > Megapixel/HDTV: 2 MP/HDTV 1080p
- > Max video resolution: 1920 x 1080



### AXIS P3904-R

High-performance HDTV camera for onboard surveillance

- > Megapixel/HDTV: 1MP/HDTV 720p
- > Max video resolution: 1280 x 720



## AXIS P33 Network Camera Series

Fixed domes for any environment with remote focus and zoom

AXIS P33 Network Camera Series consists of full-featured fixed domes designed for efficient installation with remote focus and zoom and is available in indoor, indoor vandal-resistant and outdoor-ready vandal-resistant models designed for extreme temperatures. They all offer high-performance video and have automatic day and night functionality and P-Iris control. AXIS P3301/-V and AXIS P3304/-V Network Cameras are smaller, discreet domes available in indoor and indoor vandal-resistant versions with a subset of the features of the AXIS P33 Series. All models support PoE. All indoor vandal-resistant models support two-way audio and built-in microphone.

### AXIS P3384-V/-VE

Vandal-resistant HDTV fixed dome with outstanding video quality in demanding light conditions

- > Megapixel/HDTV: 1 MP/720p
- > Max video resolution: 1280 x 960
- > Lightfinder technology
- > WDR – Dynamic Capture



### AXIS P3367-V/-VE

Superb 5-megapixel light-sensitive fixed dome with remote focus and zoom

- > Megapixel/HDTV: 5 MP/1080p
- > Max video resolution: 2592 x 1944



### AXIS P3365-V/-VE

Superb full HDTV fixed dome with remote focus and zoom

- > Megapixel/HDTV: 2 MP/HDTV 1080p
- > Max video resolution: 1920 x 1080



### AXIS P3364-LV/-LVE

Superb, vandal-resistant HDTV fixed dome with OptimizedIR, remote focus and zoom

- > Megapixel/HDTV: 1 MP/720p
- > Max video resolution: 1280 x 960
- > OptimizedIR
- > Lightfinder technology



**AXIS P3364-V/-VE**

Superb, light-sensitive and vandal-resistant HDTV fixed dome with remote focus and zoom

- > Megapixel/HDTV: 1 MP/720p
- > Max video resolution: 1280 x 960
- > Lightfinder technology



**AXIS P3354**

Superb, light-sensitive and cost-efficient HDTV fixed dome with remote focus and zoom

- > Megapixel/HDTV: 1 MP/720p
- > Max video resolution: 1280 x 960
- > Lightfinder technology



**AXIS P3304/-V**

Discreet video surveillance with outstanding HDTV and H.264 performance

- > Megapixel/HDTV: 1 MP/720p
- > Max video resolution: 1280 x 960



**AXIS P3301/-V**

Discreet video surveillance with outstanding H.264 performance

- > Max video resolution: 640 x 480



## AXIS P32 Network Camera Series

Streamlined and versatile varifocal fixed domes

AXIS P32 Network Camera Series consists of vandal-resistant indoor and outdoor cameras. They have a varifocal lens, P-Iris control, HDTV image quality and day/night functionality. AXIS P32 cameras include remote zoom and focus to eliminate the need for hands-on fine tuning. The camera casings are easily repaintable in any desired color to blend into the environment. All models also offer features such as video motion detection, tampering alarm, support for AXIS Camera Application Platform, PoE, pixel counter and edge storage.

### AXIS P3215-V/-VE

Streamlined and versatile varifocal fixed domes with HDTV 1080p

- > Megapixel/HDTV: 2 MP/HDTV 1080p
- > Max video resolution: 1920 x 1080



### AXIS P3214-V/-VE

Streamlined and versatile varifocal fixed domes with HDTV 720p

- > Megapixel/HDTV: 1.3 MP/HDTV 720p
- > Max video resolution: 1280 x 960





## AXIS M32 Network Camera Series

Discreet and affordable fixed domes for professional surveillance

AXIS M32 Network Cameras are cost-effective and compact fixed domes with handy features such as Power over Ethernet, varifocal lens and pixel counter. They include intelligent capabilities such as video motion detection and camera tampering alarm. They are perfectly suited where discreet, tamper-resistant or vandal-resistant fixed domes are requested, e.g. in retail stores and schools. All models also include features such as digital PTZ and supports AXIS Camera Application Platform.

### AXIS M3204/-V

Discreet and affordable HDTV fixed domes for professional surveillance

- > Megapixel/HDTV: 1 MP/HDTV 720p
- > Max video resolution: 1280 x 960



### AXIS M3203/-V

Discreet and affordable fixed domes for professional surveillance

- > Max video resolution: 800 x 600



## AXIS M31-R Network Camera Series

Compact, rugged network cameras for mobile video surveillance

The AXIS M31-R Network Camera Series is specially designed for video surveillance in buses, trains, subway cars and emergency vehicles. These cameras are discreet and rugged, and have protection against dust and water. They can withstand tough conditions such as vibrations, shocks, bumps and temperature fluctuations. All models include features such as motion detection, active tampering alarm, support for AXIS Camera Application Platform, PoE and digital PTZ.

### AXIS M3114-R

Compact, rugged HDTV network camera for mobile video surveillance

- > Megapixel/HDTV: 1 MP/HDTV 720p
- > Max video resolution: 1280 x 800



### AXIS M3113-R

Compact, rugged network camera for mobile video surveillance

- > Max video resolution: 800 x 600



## AXIS M30 Network Camera Series

### High-performance fixed mini domes

AXIS M30 Network Camera Series offers affordably priced, highly discreet, flexible and easy-to-install compact fixed domes with Power over Ethernet, memory card slots supporting edge storage, HDTV performance and 360°/180° panoramic views. They are ideal for retail stores, hotels, schools, banks and offices with tight budgets for video surveillance. Models are available in both indoor and outdoor-ready, vandal-resistant, day/night versions. AXIS M30 cameras are vandal- and dust-resistant (except for AXIS M3014 and AXIS M3007-P), and can be mounted on walls or ceilings. AXIS M3007-P is highly discreet with its smoke-detector look. All models include features such as video motion detection, active tampering alarm, support for AXIS Camera Application Program, digital PTZ and pixel counter.

#### AXIS M3027-PVE

Outdoor-ready, day/night fixed mini domes with HDTV or 360°/180° panoramic views

- > Megapixel/HDTV: 5 MP
- > 360°/180° panoramic views
- > Max video resolution: 2592 x 1944
- > Digital PTZ
- > Multi-view streaming with dewarped views



#### AXIS M3026-VE

Outdoor-ready, day/night fixed dome with 3-megapixel/HDTV 1080p

- > Megapixel/HDTV: 3 MP/1080p
- > Max video resolution: 2048 x 1536
- > Multi-view streaming
- > Enhanced capacity for video analytics
- > Input/output ports for external devices



#### AXIS M3025-VE

Outdoor-ready, day/night fixed dome with HDTV 1080p

- > Megapixel/HDTV: 2 MP/1080p
- > Max video resolution: 1920 x 1080
- > Input/output ports for external devices



#### AXIS M3024-LVE

Outdoor-ready, day/night fixed dome with IR illumination

- > Megapixel/HDTV: 1 MP/720p
- > Max video resolution: 1280 x 800
- > Built-in IR illumination
- > Input/output ports for external devices



#### AXIS M3014

Ultra-discreet, recessed-mount video surveillance solution

- > Megapixel/HDTV: 1 MP/ HDTV 720p
- > Max video resolution: 1280 x 800



**AXIS M3007-PV**

Fixed mini dome with 360°/180° panoramic view

- > Megapixel/HDTV: 5 MP
- > Max video resolution: 2592 x 1944
- > 360°/180° panoramic views
- > Digital PTZ and multi-view streaming with dewarped views



**AXIS M3007-P**

Ultra-discreet fixed mini dome with 360°/180° panoramic view

- > Megapixel/HDTV: 5 MP
- > Max video resolution: 2592 x 1944
- > 360°/180° panoramic views in up to 5 MP resolution
- > Ultra-discreet design
- > Digital PTZ and multi-view streaming with dewarped views



**AXIS M3006-V**

Fixed mini dome with 3-megapixel wide view and HDTV 1080p

- > Megapixel/HDTV: 3 MP/1080p
- > Max video resolution: 2048 x 1536
- > Wide viewing angle of 134°
- > Compact, vandal- and dust-resistant design
- > Digital PTZ and multi-view streaming



**AXIS M3005-V**

Fixed mini dome with HDTV performance

- > Megapixel/HDTV: 2 MP/1080p
- > Max video resolution: 1920 x 1080
- > Ultra-compact, vandal-resistant design
- > Progressive scan
- > Corridor Format



**AXIS M3004-V**

Fixed mini dome with HDTV performance

- > Megapixel/HDTV: 1 MP/720p
- > Max video resolution: 1280 x 800
- > Ultra-compact, vandal-resistant design
- > Progressive scan
- > Corridor Format





## **Pan/tilt/zoom (PTZ) network cameras**

### **Pan, tilt, and zoom capabilities for wide area coverage**

Axis PTZ dome network cameras provide pan, tilt, and zoom functions, enabling wide area coverage and great details when zooming in. A wide range of accessories is available, including joysticks for easy maneuvering and mounting kits for indoor and outdoor installations.

## AXIS Q60 PTZ Dome Network Camera Series

Advanced, high-speed PTZ domes with mission-critical functions

AXIS Q60 PTZ Dome Network Cameras are designed for the most demanding video surveillance applications, with outstanding, full frame rate video in resolutions up to HDTV 1080p. With powerful zoom and high-speed, precision pan/tilt/zoom capabilities, the indoor and outdoor-ready PTZ domes enable exceptional coverage of large areas and great detail when zooming in. With quick and reliable installation features, the cameras are ideal for airports, seaports, stadiums, manufacturing plants as well as city and perimeter surveillance. Pressurized, stainless steel versions are ideal outdoors for marine, mining, and oil and gas environments, and indoors in food, medical and clean room manufacturing facilities. All models include features such as day/night functionality, video motion detection, Active Gatekeeper, support for AXIS Camera Application Platform, PoE, pixel counter, autotracking, WDR and edge storage.

### AXIS Q6045/-E

Indoor/outdoor high-speed PTZ dome with HDTV 1080p and 20x zoom

- > Megapixel/HDTV: 2 MP/HDTV 1080p
- > Max video resolution: 1920 x 1080
- > 20x optical zoom
- > Two-way audio\*)
- > IP52-rated protection against dust and dripping water\*)
- > Arctic Temperature Control\*\*)
- > Vandal-resistant and shock detection

\*) AXIS Q6045

\*\*\*) AXIS Q6045-E



### AXIS Q6045-C

High-speed HDTV 1080p PTZ dome with active cooling

- > Megapixel/HDTV: 2 MP/HDTV 1080p
- > Max video resolution: 1920 x 1080
- > 20x optical zoom
- > Operates in temperatures up to 75 °C (167 °F)
- > Outdoor-ready, meeting military standard
- > SFP slots for fiber, RJ45 connections
- > Input/output ports for external devices



### AXIS Q6045-S

Pressurized, stainless steel PTZ dome with HDTV 1080p and 20x zoom

- > Megapixel/HDTV: 2 MP/HDTV 1080p
- > Max video resolution: 1920 x 1080
- > 20x optical zoom
- > Marine-grade stainless steel
- > Casing for pressurized nitrogen
- > SFP slots for fiber, RJ45 connections
- > Input/output ports for external devices



### **AXIS Q6044/-E**

Indoor/outdoor high-speed PTZ dome with HDTV 720p and 30x zoom

- > HDTV: HDTV 720p
- > Max video resolution: 1280 x 720
- > 30x optical zoom
- > Two-way audio\*)
- > IP52-rated protection against dust and dripping water\*)
- > Arctic Temperature Control\*\*)
- > Vandal-resistant and shock detection
- > Electronic image stabilization
- > Automatic defog

\*) AXIS Q6044

\*\*) AXIS Q6044-E



### **AXIS Q6044-C**

High-speed HDTV 720p PTC dome with active cooling

- > HDTV: HDTV 720p
- > Max video resolution: 1280 x 720
- > 30x optical zoom
- > Operates in temperatures up to 75 °C (167 °F)
- > Outdoor-ready, meeting military standard
- > SFP slots for fiber, RJ45 connections
- > Input/output ports for external devices



### **AXIS Q6044-S**

Pressurized, stainless steel PTZ dome with HDTV 720p and 30x zoom

- > HDTV: HDTV 720p
- > Max video resolution: 1280 x 720
- > 30x optical zoom
- > Marine-grade stainless steel
- > Casing for pressurized nitrogen
- > SFP slots for fiber, RJ45 connections
- > Input/output ports for external devices



### **AXIS Q6042/-E**

Indoor/outdoor high-speed PTZ dome with 36x zoom

- > Max video resolution: Extended D1, 736 x 576 (50 Hz), 752 x 480 (60 Hz)
- > 36x optical zoom
- > Two-way audio\*)
- > IP52-rated protection against dust and dripping water\*)
- > Arctic Temperature Control\*\*)
- > Vandal-resistant and shock detection
- > Electronic image stabilization

\*) AXIS Q6042

\*\*) AXIS Q6042-E



### AXIS Q6042-C

High-speed PTZ dome with active cooling

- > Max video resolution: Extended D1, 736 x 576 (50 Hz), 752 x 480 (60 Hz)
- > 36x optical zoom
- > Operates in temperatures up to 75 °C (167 °F)
- > Outdoor-ready, meeting military standard
- > SFP slots for fiber, RJ45 connections
- > Input/output ports for external devices



### AXIS Q6042-S

Pressurized, stainless steel PTZ dome with 36x zoom

- > Max video resolution: Extended D1, 736 x 576 (50 Hz), 752 x 480 (60 Hz)
- > 36x optical zoom
- > Marine-grade stainless steel
- > Casing for pressurized nitrogen
- > SFP slots for fiber, RJ45 connections
- > Input/output ports for external devices



## AXIS P55 PTZ Dome Network Camera Series

Advanced indoor and outdoor-ready PTZ domes

AXIS P55 PTZ Dome Network Camera Series consists of cost-effective, advanced indoor and outdoor-ready PTZ domes. They provide full frame rate video in resolutions up to HDTV 720p and with optical zoom up to 29x. In addition, the unique AXIS P5544 PTZ Dome Network Camera with Panopsis technology provides a 360° field of view that covers more than 950 m<sup>2</sup> (10,000 sq. ft.) – more than the size of three tennis courts – enabling panoramic views not only for security purposes, but also for crowd, flow and queue management.

The cameras enable surveillance of a large area and great details when zooming in. With quick and reliable installation features, the cameras are ideal for stores, banks, warehouses, parking lots, airports and train stations, as well as city and perimeter surveillance. All models include features such as day/night functionality, video motion detection, Advanced Gatekeeper, support for AXIS Camera Application Platform, PoE, pixel counter and edge storage.

### AXIS P5544

HDTV PTZ dome with 360° panoramic view and 18x zoom

- > HDTV: HDTV 720p
- > Max video resolution: 1280 x 720
- > WDR
- > 18x optical zoom
- > 360° panoramic view
- > Panopsis lens: 180°
- > Two-way audio



### **AXIS P5534/-E**

Indoor/outdoor-ready HDTV PTZ dome with 18x zoom

- > HDTV: HDTV 720p
- > Max video resolution: 1280 x 720
- > 18x optical zoom
- > IP66- and NEMA 4X-rated protection against dust, rain and snow\*)

\*) AXIS P5534-E



---

### **AXIS P5532/-E**

Cost-effective PTZ dome camera with 29x zoom for indoor/outdoor applications

- > Max video resolution: D1 720 x 576 (50 Hz), 720 x 480 (60 Hz)
- > WDR
- > 29x optical zoom
- > Image stabilizer
- > IP66- and NEMA 4X-rated protection against dust, rain and snow\*)

\*) AXIS P5532-E



---

### **AXIS P5522/-E**

Affordable day/night PTZ dome with 18x zoom for broad indoor/outdoor application

- > Max video resolution: D1 720 x 576 (50 Hz), 720 x 480 (60 Hz)
- > WDR
- > 18x optical zoom
- > IP66- and NEMA 4X-rated protection against dust, rain and snow\*)

\*) AXIS P5522-E



---

### **AXIS P5512/-E**

Compact, affordable indoor/outdoor-ready PTZ dome with 12x zoom

- > Max video resolution: 4CIF 704 x 576 (50 Hz), 704 x 480 (60 Hz)
- > 12x optical zoom
- > IP66- and NEMA 4X-rated protection against dust, rain and snow\*)

\*) AXIS P5512-E





## AXIS P54 PTZ Dome Network Camera Series

### PTZ domes that blend in

AXIS P54 PTZ Dome Network Camera Series comprises outdoor-ready, wall-mounted HDTV pan/tilt/zoom cameras that are aesthetically designed to blend in with a building. The attractively priced cameras are ideal for use in city and perimeter surveillance, parking houses and school yards. AXIS P54 cameras mount directly on a wall without the traditional mounting arm. The design, which incorporates a wall bracket, allows the cameras to be at one with the building. The built-in bracket also provides cost savings by eliminating the need for a separate mounting accessory, and makes installation easier and quicker. The cameras' integrated sunshield can be easily repainted to match the color of the building. All models include features such as durable, low maintenance mechanics, 18x optical zoom, day/night functionality, two-way audio, input/output ports for external devices, video motion detection, audio detection, Advanced Gatekeeper, support for AXIS Camera Application Platform, PoE+, pixel counter and edge storage. The outdoor models have IP66 and NEMA 4X rating.

### AXIS P5415-E

Intelligent direct drive HDTV 1080p  
PTZ dome

- > Megapixel/HDTV: 2 MP/HDTV 1080p
- > Max video resolution: 1920 x 1080
- > Outdoor wall-mount design for easy installation
- > Repaintable integrated sunshield
- > Durable, low-maintenance mechanics
- > 18x optical zoom
- > Two-way audio
- > I/Os



### AXIS P5414-E

Intelligent direct drive HDTV 720p  
PTZ dome

- > HDTV: HDTV 720p
- > Max video resolution: 1280 x 720
- > Outdoor wall-mount design for easy installation
- > Repaintable integrated sunshield
- > Durable, low-maintenance mechanics
- > 18x optical zoom
- > Two-way audio
- > I/Os



## AXIS M50 PTZ Dome Network Camera Series

Mini PTZ domes that give the big picture

AXIS M50 PTZ Dome Network Camera Series are affordably priced pan/tilt/zoom cameras. They are perfect for remote and discreet monitoring of indoor areas such as stores, banks, hotels, office lobbies, restaurants and warehouses. The vandal-resistant models can be used in those areas subject to vandalism. All models include features such as 3x digital zoom, video motion detection, support for AXIS Camera Application Platform, PoE, pixel counter and edge storage.

### AXIS M5014/-V

Mini HDTV PTZ dome that gives the big picture

- > HDTV: HDTV 720p
- > Max video resolution: 1280 x 720
- > Vandal-resistant model\*)
- > Two-way audio and built-in microphone\*\*)
- > Ultra-discreet design\*\*)
- > PoE
- > IP66 and IK10 ratings\*)

\*) AXIS M5014-V

\*\* ) AXIS M5014



### AXIS M5013/-V

Mini PTZ dome that gives the big picture

- > Max video resolution: SVGA 800 x 600
- > Vandal-resistant model\*)
- > Two-way audio and built-in microphone\*\*)
- > Ultra-discreet design\*\*)
- > PoE
- > IP66 and IK10 ratings\*)

\*) AXIS M5013-V

\*\* ) AXIS M5013



## AXIS 214 PTZ Network Camera

Day & night camera with pan/tilt/zoom and audio

AXIS 214 PTZ Network Camera is a high performance camera for professional surveillance and remote monitoring. It combines a high quality color camera with the flexibility of remote pan/tilt/zoom through operator control. The 18x optical motorized lens with auto focus makes it possible to zoom in on a small or distant object with exceptional clarity. The AXIS 214 PTZ is designed for use in mid-sized businesses, such as retail stores and supermarkets. AXIS 214 include features such as day/night functionality, two-way audio, video motion detection and audio detection.

### AXIS 214 PTZ

Day & night camera with pan/tilt/zoom and audio

- > Max video resolution: 4CIF 704 x 576 (50 Hz), 704 x 480 (60 Hz)



# Thermal network cameras



## Reliable detection

– 24 hours a day, seven days a week

Axis thermal network cameras outperform a visual camera in dark scenes and are a great tool for detecting people and objects in 24/7 surveillance, from pitch dark areas to a sunlit parking lot. The cameras create images based on the heat that always radiates from any object, vehicle or person. This gives the cameras the power to deliver images that allow operators to detect and act on suspicious activity.

## AXIS Q87-E Network Camera Series

Thermal detection, HDTV and PTZ surveillance all in one

AXIS Q87-E Network Camera Series provides a visual camera and a thermal camera. The visual and thermal cameras can deliver several independent H.264 streams. Both visual and thermal cameras are connected to an Ethernet switch placed inside the housing. All models are outdoor-ready and include features such as day/night functionality, video motion detection, tampering alarm, support for AXIS Camera Application program, edge storage and IP66 rating. The visual camera provides 10x optical zoom and auto focus, and on top of that AXIS Q87-E is mounted on a pan/tilt motor. AXIS Q87-E models can pan 360° endlessly and tilt between 45° to -20° with a preset accuracy of 0.02°.

### AXIS Q8722-E

Superior thermal detection, HDTV and PTZ surveillance all in one

- > Megapixel/HDTV: 2 MP/HDTV 1080i (visual camera)
- > Max video resolution 1920 x 1080 (visual camera), 640 x 480 (thermal camera)
- > Detection up to 5500 m (6015 yards)



### AXIS Q8721-E

High-quality thermal detection, HDTV and PTZ surveillance all in one

- > Megapixel/HDTV: 2MP/HDTV 1080i (visual camera)
- > Max video resolution: 1920 x 1080 (visual camera), 384 x 288 (thermal camera)
- > 10x optical zoom
- > Detection up to 3700 m (4046 yards)



## AXIS Q19 Network Camera Series

High quality detection and wide range coverage

AXIS Q19 Thermal Network Cameras are a perfect complement to any network video system that needs to secure an area 24 hours a day, seven days a week. The cameras use thermal imaging, which allows users to detect people, objects and incidents in complete darkness and difficult conditions such as smoke, haze, dust and light fog. Most of the models include features such as audio support, video motion detection, audio detection, active tampering alarm, support for AXIS Camera Application Platform, PoE and edge storage. The PT Mount models are designed to be mounted on pan-tilt motors.

### AXIS Q1932-E / AXIS Q1932-E PT Mount

Reliable VGA detection and wide range coverage

- > Max video resolution: 640 x 480
- > Bullet-style design for indoor or outdoor
- > Many lens alternatives for detection up to 5500 m (6015 yards)
- > Serial port for communication with pan/tilt motors\*)



\*) AXIS Q1932-E PT Mount

**AXIS Q1931-E/  
AXIS Q1931-E PT Mount**

Superior detection and wide range coverage

- > Max video resolution: 384 x 288
- > Bullet-style design for indoor or outdoor
- > Many lens alternatives for detection up to 5420 m (5920 yards)
- > Serial port for communication with pan/tilt motors\*)

\*) AXIS Q1931-E PT Mount



**AXIS Q1922/-E**

Superior detection and wide range coverage

- > Max video resolution: 640 x 480
- > Outdoor-ready with window heater\*)
- > Lens alternatives for detection up to 5500 m (6015 yards)

\*) AXIS Q1922-E



**AXIS Q1910/-E**

Reliable detection in dark and challenging indoor/outdoor conditions

- > Max video resolution: 160 x 128
- > Outdoor-ready with window heater\*)
- > Detection up to 550 m (600 yards)

\*) AXIS Q1910-E



# Video encoders



# Migrate your analog security system to an IP-based video solution.

With an Axis video encoder solution, you can integrate your existing analog system with products that bring your system up to speed with the latest IP technology. Video encoders instantly provide you with the benefits of network video, as well as a platform to expand and

update your infrastructure with network cameras, software and networking/storage devices.

All Axis video encoders include features such as video motion detection and PTZ control.

## Types of video encoders



1-channel video encoders



4-channel video encoders



6-channel video encoders



16-channel video encoders



Chassis for large installations

Every Axis product has a unique naming structure that lets you know its functions and capabilities at a glance. Find out more on page 41.

## AXIS Q74 Series

High-performance, full-featured video encoders with H.264

AXIS Q74 Video Encoder Series delivers superb video quality and offers full-featured, most advanced and secure integration of analog cameras into an IP-based video surveillance system. All models include features such as alarm in-/outputs, tampering alarm and support for AXIS Camera Application Platform.

### AXIS Q7436 Blade

High-performance, flexible 6-channel video encoder

- > Max video resolution: D1
- > 50/60 fps
- > Outstanding video processing performance
- > Intelligent video capabilities



### AXIS Q7424-R

Full-featured video surveillance for tough environments

- > Max video resolution: D1
- > Rugged design
- > Extended temperature range
- > SFP slot for fiber connection
- > Edge storage



### AXIS Q7414 Blade

High-density 4-channel video surveillance solution with H.264 and full audio support

- > Max video resolution: D1



### AXIS Q7411

Full-featured, single-channel video encoder with exceptional performance

- > Max video resolution: D1
- > 50/60 fps
- > Outstanding video processing capabilities
- > Intelligent video capabilities
- > Edge storage



### AXIS Q7401 / AXIS Q7404

Full-featured video surveillance with outstanding H.264 performance

- > Max video resolution: D1
- > Intelligent video capabilities
- > Two-way audio on one channel\*)
- > Edge storage\*\*)
- > 1-channel and 4-channel models



\*) AXIS Q7404

\*\*) AXIS Q7401



## AXIS P72 Series

Full-featured, cost-effective video encoders with H.264

AXIS P72 Video Encoder Series offers powerful, full-featured and efficient integration of analog cameras into an IP-based video surveillance system. The video encoders are ideal for locations such as gas stations, convenience stores and small offices. All models include features such as high resolution quad view, 30 fps, two-way audio, tampering alarm and alarm in-/outputs.

### AXIS P7224 Blade

Full-featured, cost-effective 4-channel video encoder blade with H.264

- > Max video resolution: D1



### AXIS P7216

Full-featured, cost-effective 16-channel video encoder

- > Max video resolution: D1
- > Edge storage
- > SFP slot



### AXIS P7214

Full-featured, cost-effective 4-channel video encoder with H.264

- > Max video resolution: D1
- > Edge storage



## AXIS M70 Series

Cost-effective video encoders with H.264

AXIS M70 Video Encoder Series offers high quality video, efficient and affordable integration of analog cameras into a powerful IP-based video surveillance system and is ideal for locations such as gas stations, convenience stores and small offices.

### AXIS M7016

Cost-effective 16-channel video encoder

- > Max video resolution: D1
- > 30 fps



### **AXIS M7014**

Cost-effective 4-channel video encoder with H.264

- > Max video resolution: D1
- > 15 fps



### **AXIS M7001**

The smallest 1-channel video encoder with H.264

- > Max video resolution: D1
- > 30 fps



## **AXIS Q7920 Video Encoder Chassis**

Reliable, high-density video encoder chassis for up to 84 channels

AXIS Q7920 is a high-density rack mount video encoder chassis, providing an expandable solution for migrating analog installations to network video. This video encoder chassis is ideal for large, mission critical installations where high performance, flexibility and reliability are required.

- > Holds up to 14 hot-swappable blades
- > SFP slots
- > 5U rack mount video encoder chassis
- > Power and network redundancy
- > I/O and serial port support



## **AXIS 291 1U Video Server Rack**

Full frame rate, high-density video encoder rack solution for up to 18 channels

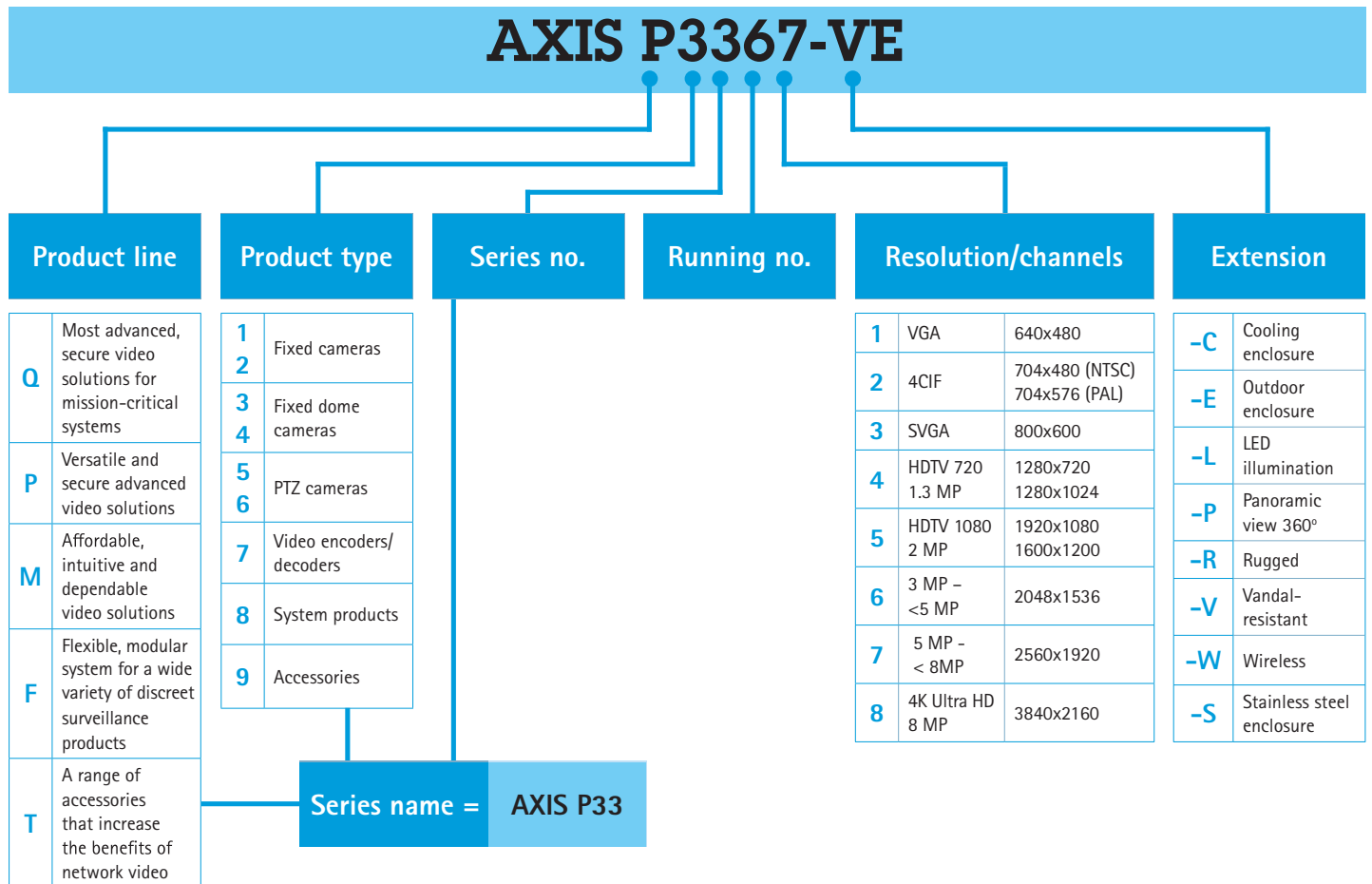
AXIS 291 1U Video Server Rack is a high-density solution for seamless and professional installation of video encoders. AXIS 291 1U is designed for expanding applications and is ideal for airports, hotels and train stations – premises where analog cameras are already installed.

- > Holds up to 3 video encoder blades
- > 1U 19" industry standard rack
- > I/O and serial port support



# Naming structure

All Axis products follow a naming structure that allows quick categorization and identification. The products are named according to their product lines, product types, series numbers, running numbers, resolution/channels and extensions. The unique product names will, at a glance, give you a clear idea of the functions and capabilities of the products.



# Hardware accessories



# Accessories complementing Axis network products for a complete solution.

Axis provides a wide range of accessories that complements our network cameras and video encoders and assists in your network video installation. Whether the network cameras are to be placed in demanding

outdoors environment, mounted on ceilings, walls or corners, or used for night-time surveillance, it is important to find the right accessories that fulfill these demands, and are quick and easy to install.

## Types of hardware accessories



Mounting



Connecting



Video decoders



Add-on devices



Tools and extras

Every Axis product has a unique naming structure that lets you know its functions and capabilities at a glance. Find out more on page 41.

## Mounting

Make your choice based on the orientation and protection you need for your network camera installation.



### Camera Mounts

For installation on wall, pole, ceiling, corner or back boxes.



### Camera Housings

For fixed, fixed domes or PTZ cameras.



### Enclosure Cabinets

Cabinets for accessories, encoders or DIN rail parts.

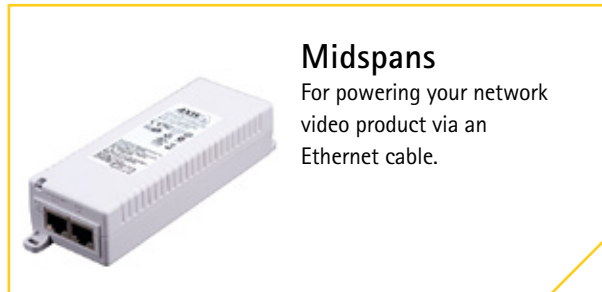


### Pan Tilt Motors

Add pan/tilt functionality to Axis fixed network cameras.

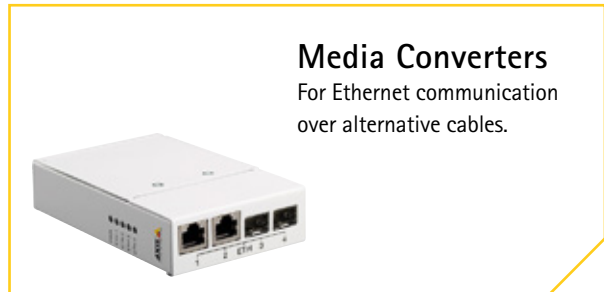
## Connecting

Axis provides devices for its network video products to allow them to receive both data and power over different media, whether it is power, Ethernet, fiber or coax.



### Midspans

For powering your network video product via an Ethernet cable.



### Media Converters

For Ethernet communication over alternative cables.



### Power Adapters

For direct power to your device.



### Cables and Connectors

For special connections and cameras.

## Add-on devices

Choose among illuminators, lenses, audio and lenses, audio, and output devices.



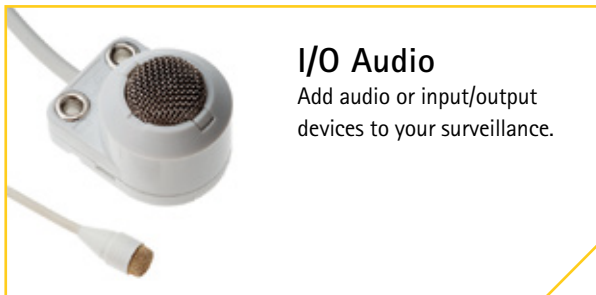
### Illuminators

White and infrared LED illuminators.



### Lenses

Optional lenses to meet special requirements.



### I/O Audio

Add audio or input/output devices to your surveillance.



### Video Decoder

Full-featured video decoder with H.264 support.

## Tools and extras

Complete your surveillance solution with devices that help your installation, from installation display to joysticks and cleaning accessories.



### Installation Tools and Display

Direct connection to the camera for easy installation and live video.



### Joysticks and Control Boards

To control cameras with PTZ capabilities.



### Miscellaneous

From cleaning products to labels.



# Video management



# Remote viewing, recording, and event management.

Axis offers its own video management solutions that address, in particular, the needs of small installations and medium-sized systems, the increasing requirements for hosted video solutions (cloud solutions), and requests from customers demanding a single-vendor solution.

Axis' Application Development Partner program comprises hundreds of companies that provide video management solutions for all kinds of needs: from small to enterprise solutions with thousands of cameras.

## Video management software



AXIS Camera Companion



AXIS Camera Station



Partner solutions



Surveillance as a cloud-based service



## AXIS Camera Companion

AXIS Camera Companion is the market's easiest video surveillance solution for small systems from 1 to 16 cameras – perfect for retail, offices and hotels. With AXIS Camera Companion, all video is recorded on SD cards in the cameras, and no DVR or server is necessary – making each camera a smart, independent video recording device. The system consists of standard Axis cameras, SD cards, software clients for PC and smartphones, and standard network equipment.

- > Excellent HDTV image quality
- > Easy to install and use
- > No central PC or DVR needed
- > Remote and wireless access to video
- > Viewing app for iPhone, iPad and Android devices
- > Scalable and future-proof
- > Multilingual support for English, UK English, Arabic, Brazilian Portuguese, Czech, Dutch, Finnish, French, German, Italian, Japanese, Korean, Polish, Russian, Simplified Chinese, Traditional Chinese, Slovak, Spanish, Swedish and Turkish



## AXIS Camera Station

AXIS Camera Station is a monitoring and recording system for small- to mid-sized installations. Optimized for Axis network video products, this software offers easy installation and setup, and an intuitive user interface for effective investigation and high-definition identification. AXIS Camera Station meets the needs for efficient surveillance of small- to mid-sized installations, such as retail shops, hotels, schools, and manufacturing sites. It is a proven solution designed to perfectly match Axis' wide range of HDTV network video products and product features.

The software client can be installed on any computer, enabling remote viewing and control from anywhere on the corporate network or the Internet. An easy setup wizard with automatic camera discovery guides you through all the necessary steps of the configuration process. This allows the system to be up and running within minutes.

An intuitive user interface with flexible live-view layout, site maps, powerful event configuration, efficient alarm management and responsive PTZ control makes it possible to effectively manage the cameras in the system.

Quick investigation and retrieval of evidence for safe and secure export is enabled by intuitive timeline visualization and an efficient video search. By defining an area of interest you can quickly search through vast amounts of high definition recordings.

- > Optimized for Axis network video products
- > Quick system setup
- > Intuitive operation
- > Effective investigation
- > High-definition identification



## Partner solutions

Axis works with the broadest network of industry-leading software vendors to provide tightly integrated video management software for your Axis network video products. They provide video management solutions for all kinds of systems: from small to enterprise solutions with thousands of cameras. In addition, our application partners offer many specialized solutions for various industry needs or geographical requirements. With the support of more than 1200 software vendors, you are sure to find a video management solution that meets your specific needs:

- > With optimized features and functionality
- > Specific for any industry segment
- > Localized for your country
- > Scalable to include any number or model of Axis video products
- > Easily integrates with your existing physical security and operating systems

## Surveillance as a cloud-based service

Axis has a wide range of network cameras and encoders compatible with hosted video. With these products as a base, our global network of service providers can offer cloud-based surveillance services as well as other value adding services to protect and develop your business. Benefits include:

- > A trouble-free solution where your partner manages and maintains the solution
- > No hardware investments that will be outdated over time
- > A reliable security solution for you and your employees
- > Flexible service offerings that support and can grow with your business
- > Easily get new features, applications and service offerings to support your business

# Smart technologies

## Electronic Image Stabilization

Axis' Electronic Image Stabilization is available in several Axis cameras and benefits the user by effectively minimizing effects from vibration and shaking, resulting in clear images even in scenes with a lot of motion.



Electronic Image Stabilization ON



Electronic Image Stabilization OFF

## Wide Dynamic Range (WDR)

Many Axis cameras offer WDR, which makes objects visible in both bright and dark areas of a scene. The latest advancement is Axis' unique WDR – Forensic Capture technology.



WDR



Conventional camera

## Lightfinder

Axis' Lightfinder is available in several cameras and ensures extreme light sensitivity with color video even at very low light.



With Lightfinder



Without Lightfinder

## Infrared (IR) illuminators

Built-in IR LEDs such as Axis' OptimizedIR technology allow the camera to deliver high quality black and white images even in complete darkness.



---

## P-Iris

P-Iris is an automatic, precise iris control available on selected Axis cameras. It involves a special P-Iris lens and software that optimizes image quality. Compared with other lens systems, it provides improvements in contrast, clarity and depth of field.



P-Iris



Old technology

---

## Corridor Format

Axis' unique Corridor Format, available on all cameras, provides a vertical video stream. This format optimizes the coverage of areas such as hallways and aisles, maximizing image quality while eliminating bandwidth and storage waste.



## 4K Ultra HD

Axis was first to offer an HDTV security camera, now the standard in the industry. The latest development is the 4K Ultra HD, which offers four times the resolution of a standard HDTV 1080p camera at full 30 frames per second. This allows users to enhance any portion of the screen to pull crisp forensic video from large areas without losing details.

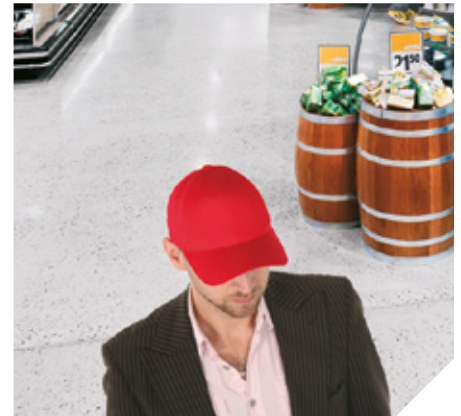


## Discreet surveillance

Axis offers cameras that blend into the environment and are virtually impossible to discover. They can be placed at eye-level at entrances or integrated into locations such as ATM machines for discreet surveillance. They can enable close-up shots for identification or overview surveillance. Tampering risks are also reduced.



Discreet eye-level camera



Ceiling-mounted camera

## Power over Ethernet (PoE)

PoE is the standard in all Axis cameras, and it powers devices over the network using the same cable as for video and data. This removes the cost of pulling separate power cables and increases reliability, since a video surveillance system with PoE can be powered centrally from a server room, which is often backed up with a UPS (Uninterruptible Power Supply). This means that the video surveillance system is operational even during a power outage.

## Edge storage

Edge storage, also referred to as local storage or onboard recording, is available in almost all Axis cameras. It allows cameras to record video directly to an SD memory card or a network-attached storage (NAS). Edge storage allows systems to be designed without any central server, creating a very cost-efficient system. Edge storage can also be used as a fail-over solution to increase storage reliability, or for remote or mobile surveillance.

# About Axis Communications

Axis offers intelligent security solutions that enable a smarter, safer world. As the global market leader in network video, Axis is driving the industry by continually launching innovative network products based on an open platform – delivering high value to its customers and carried through a global partner network. Axis has long-term relationships with partners and provides them with knowledge and ground-breaking network products in existing and new markets.

Axis has more than 1,600 dedicated employees in more than 40 countries around the world, supported by a network of over 65,000 partners across 179 countries. Founded in 1984, Axis is a Sweden-based company listed on NASDAQ OMX Stockholm under the ticker AXIS.

For more information about Axis, please visit our website [www.axis.com](http://www.axis.com).

Distributed by:

©2014 Axis Communications AB. AXIS COMMUNICATIONS, AXIS, ETRAX, ARTPEC and VAPIX are registered trademarks or trademark applications of Axis AB in various jurisdictions. All other company names and products are trademarks or registered trademarks of their respective companies. We reserve the right to introduce modifications without notice.

