

FiberPatrol® FPRAMS

Remote Alarm Management System

Description

The FiberPatrol Remote Alarm Management System (FPRAMS) is a network-based software platform for enterprise-wide perimeter security integration and alarm management. FPRAMS integrates FiberPatrol intrusion detection systems and third-party sensors with video surveillance and provides alarm notifications and automatic alarm handling.

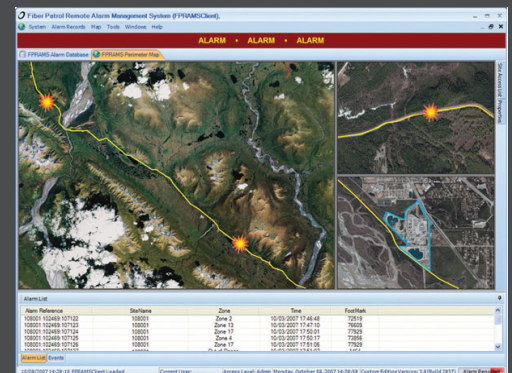
FPRAMS is based on a Server-Client architecture that permits multiple protected sites to be monitored from one or several central locations simultaneously. The FPRAMS Server is a dedicated computer with a suite of database-driven Windows service programs that aggregate alarm reports from remote sites, define and implement automatic alarm handling actions, and issue notifications to client workstations. The FPRAMS Client software is a standard Windows application that subscribes to FPRAMS services and provides a convenient graphical operator interface for alarm monitoring and system administration.

When integrated with a CCTV system, FPRAMS automatically activates PTZ camera presets based on reported alarm locations. An operator is presented with active site maps, live security video and on-screen manual PTZ controls. Search and playback of previously recorded alarm videos is also easily managed through the operator interface. FPRAMS is compatible with a wide range of CCTV systems and hardware from most leading brands.

The FiberPatrol Remote Alarm Management System is based on cutting-edge networking and database technologies and features robust architecture, connectivity, and expandability. The system combines a high degree of behind-the-scenes sophistication with an intuitive user interface that has the familiar look and feel of a standard Windows application.

Features

- > Network-enabled multi-site perimeter security integration
- > Simultaneous site monitoring and control from multiple client workstations
- > Automated perimeter alarm handling
 - Multi-camera PTZ preset activation
 - Graphical and audible alarm annunciation
 - Email or text message alarm notifications
- > Live map displays for each monitored site
- > Multi-camera live security videos with on-screen PTZ controls
- > Database-driven alarm management
- > Alarm video search and playback
- > Native support of FiberPatrol intrusion detection systems
- > Support for major DVR/NVR brands
- > IP camera support
- > Support for 3rd party sensor inputs
- > Support for access control integration



Specifications

Client Workstation Requirements

CPU:	Dual core 2.4 GHz or better
RAM:	2 GB or more
HDD:	Minimum 2 GB free
Video Card:	DirectX 9.0 or above Minimum 256MB memory 512MB recommended
Networking:	100/1000Mbps NIC
Operating System:	Windows XP Professional SP3 Windows 7 Professional (32 or 64 bit)

Server System Specifications

CPU*:	1.86 GHz Intel Nehalem
RAM*:	6 GB DDR3
HDD*:	2x500 Gb RAID array
Networking*:	Dual Gigabit NIC
Operating System*:	Windows 7 Pro 64bit
Video Card*:	DirectX 10 compatible
Optional Interface*:	RS232 / relay contacts

* Similar or better configuration may be substituted

Server Mechanical Specifications

Dimensions:	19" x 19" x 5.25" (48x48x13 cm)
Rack Space:	5.25" (13 cm), 3 RU
Rack Clearance:	2" (5 cm) [front], 6" (15 cm) [back]
Weight:	34 lbs. (15.4 kg)

Optellios, Inc

11 Penns Trail, Suite 300
Newtown, PA 18940

Phone: (267) 364-5298

Fax: (267) 364-5357

www.optellios.com