

# Racks and Cable Management

Siemon's line of open racks and cable management solutions covers nearly any network infrastructure need: 4-post and 2-post racks, exclusive rack-mount vertical cable managers, 19 inch horizontal managers, cable tray, j-hooks and much more.

New solutions in this section:

- **VersaPOD® 4-Post Rack** — Adjustable 4-post open rack designed to integrate with the Zero-U vertical cable management, patching and power distribution options used in VersaPOD cabinets
- **Cable Tray Rack** — Mounts to overhead ladder rack or cable tray to provide additional rack-mount space without consuming cabinet space
- **RouteIT™ Cable Tray System** — A complete line of wire basket tray and exclusive accessories for overhead and underfloor applications
- **RouteIT J-Hooks** — High quality cable routing hooks in a wide array of sizes and mounting configurations

## Section Contents

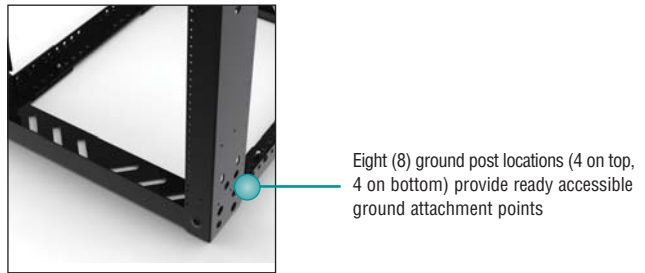
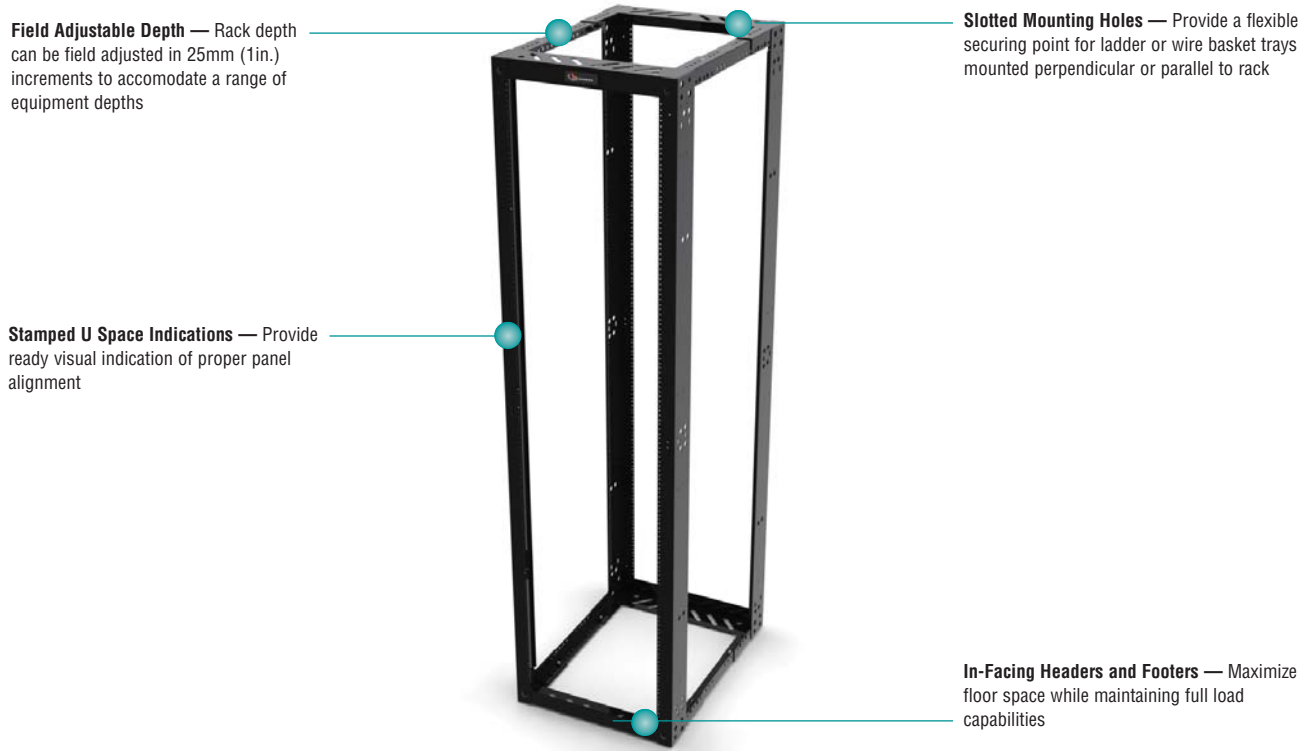
VersaPOD 4-Post Rack . . . . .	10.1 – 10.2
RS3 Cable Management Rack System . . . . .	10.3 – 10.4
RS Rack System . . . . .	10.5 – 10.6
Rack Accessories . . . . .	10.7
Verical Patching Channels (VPC) . . . . .	10.8 – 10.9
Cable Tray Rack . . . . .	10.10 – 10.11
WM Series Cable Managers . . . . .	10.12
Cable Hangers . . . . .	10.12
Hook and Loop Cable Managers . . . . .	10.12
Stand-Off Brackets . . . . .	10.13
Blank Filler Panels . . . . .	10.13
19 Inch Equipment Shelf . . . . .	10.13
RWM Series Horizontal Cable Managers . . . . .	10.14
S110®/S210® Horizontal Cable Managers . . . . .	10.14
Rear Cable Managers . . . . .	10.14
RouteIT™ Cable Tray and Accessories . . . . .	10.15 – 10.16
Under Floor Tray and Accessories . . . . .	10.17
RouteIT J-Hooks . . . . .	10.19

# VersaPOD® 4-Post Rack

Siemon's adjustable-depth, VersaPOD 4-Post Rack provides a stable platform for mounting extended depth/size active equipment. It is ideal for use in both Telecommunications Rooms and central patching areas within Data Center environments.

In addition to providing compatibility with Siemon's standalone vertical cable managers, the 4-post rack is fully compatible with the Zero-U panels used in Siemon's VersaPOD cabinets. This compatibility allows for mounting of patch panels or cable management between bayed racks or at end of rows.

The headers, vertical rails and depth adjustment brackets all feature symmetrical designs to eliminate orientation errors during assembly. They also work in conjunction to self-square the rack during assembly saving valuable installation time. The result is a rack that can be field assembled in less than 20 minutes.



# VersaPOD® 4-Post Rack

## Ordering Information:

Part #	Description
RSQ1-07-S.....	2.1m (7 ft.) x 0.48m (19 in.) VersaPOD 4-post rack adjustable depth, 560-915mm (22-36 in.), steel, black, 45U, #12-24
RSQ-BAY-VPC6 .....	VersaPOD 4-post rack baying bracket for VPC-6, RS-CNL and RS-CNL3, set of 2
RSQ-BAY-VPC12 .....	VersaPOD 4-post rack baying bracket for VPC-12, set of 2
RSQ-BAY-VPP.....	VersaPOD 4-post rack baying bracket for Zero-U Panels, set of 4

*Note: VPC series baying brackets are optional to ensure row alignment, they are unnecessary if VPC or RS-CNL products are used for both front and back of rack.  
Zero-U baying brackets are required to ensure proper operation of Zero-U panels.*



*External Dimensions:  
height: 2.13m (7 ft.)  
width: 560mm (22 in.)  
depth: 558 -915mm (22-36 in.)*

*1U = 44.5mm (1.75 in.)*

## VersaPOD 4-POST RACK SPECIFICATIONS:

<b>U Space</b>	45
<b>Color</b>	Black
<b>Packaging</b>	Ships unassembled in a single carton
<b>Standard Compliance</b>	CEA-310-E, UL 60950, RoHS
<b>Compatibility</b>	RS-CNL, RS-CNL3, VPC-6, VPC-12, Zero-U VersaPOD Panels
<b>Weight</b>	48 kgs (105 lbs), Full weight with packaging
<b>Load Rating</b>	907 kgs (2000 lbs) Static load, evenly distributed

# RS3 Cable Management Rack System

Siemon's RS3 series cable management rack system provides high capacity cable management for routing of both horizontal/backbone cabling and patch cords. Vertical channels with hinged cable manager covers conceal and route patch cables for a clean, professional installation.

**High Capacity** — 76mm x 152mm (3 in. x 6 in.) front vertical managers provide capacity for approximately 190 category 6 patch cords

**Cable Tray Compatibility** — Header bars incorporate unique slotted holes for securing cable trays routed perpendicular or parallel to RS3 racks

**Deeper Channels** — 116.8mm x 152.4mm (4.5 in. x 6 in.) vertical side rails provide higher cable capacity over standard rack designs

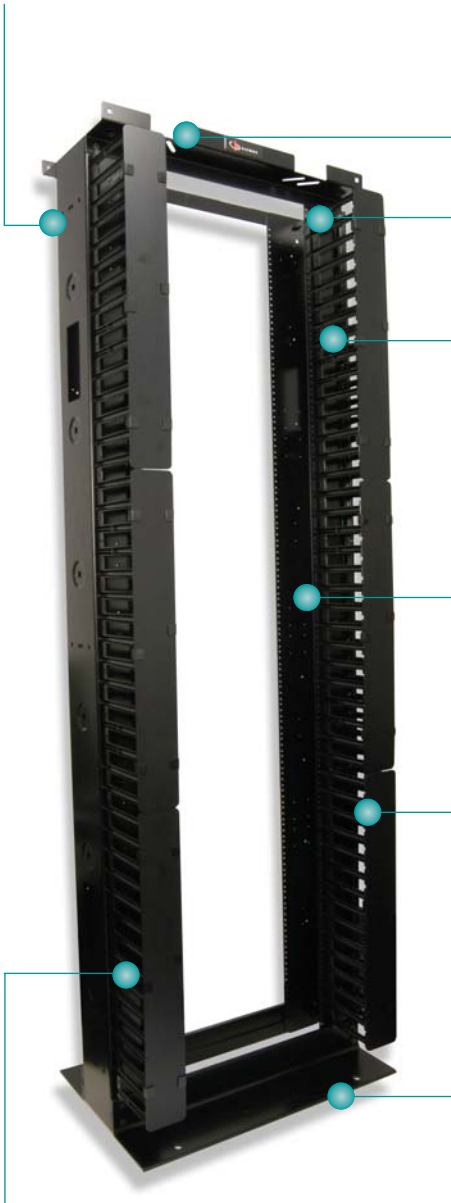
**Side Stackable** — RS3 design allows racks to be side-stacked without interference between adjacent racks

**Flexible Management** — Side rails compatible with Siemon's quarter-turn hook and loop cable managers for proper management of cable bundles

**Cable Access Holes** — Access holes on side rails allow cables to be routed between adjacent racks

**Power Strip Compatibility** — Mounting holes on rear of RS3 accommodate Siemon's vertical power strip (p/n RS-P04) and smart PDUs (see Section 12) to provide power to active equipment mounted in rack

**Anchoring** — Mounting holes provided for anchoring racks to floor



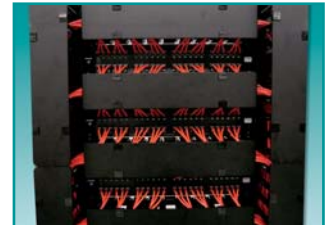
## Hinged Front Covers

Front covers fully conceal all vertical patch cord routing through an easy to use, modular design. Each section can be individually hinged in either direction to facilitate quick and easy changes. Covers include positive securing snap latches for trouble-free fastening.



## Rounded Managers

The individual managers on the vertical channels are rounded to allow patch cords to seamlessly enter and exit the managers without risk of cable deformation.



## Matching Horizontal Managers

Siemon's RS3 series horizontal cable managers provide a fully integrated appearance and same hinging design for comprehensive management of patch cords.

## RS3 Cable Management Rack System

Part #	Description
RS3-07	2.1 x 0.48m (7 ft. x 19 in.) aluminum enhanced cable management rack system, 45U. Includes rack assembly hardware, vertical cable management channels with hinged covers, and ground lug

height: 2.1m (7 ft.),  
width: 685.0mm (2.25 ft.),  
depth: 457.2mm (1.5 ft.)

Add "S" for steel.

Note: Aluminum racks (RS3-07) are available and intended for use with connecting hardware and cable managers only. For mounting of active equipment, steel racks are recommended.

Note: 1U = 44.5mm (1.75 in.)

See Cable Management Capacity Table in the Cable Management Section of our E-Catalog on our Website



## RS3 Series Horizontal Cable Managers

These horizontal cable managers are designed for use with Siemon's RS3 series racks and use the same hinged cover design as the vertical managers. The hinged front cover snaps easily over cable managers and provides a concealed routing path into the vertical cable management of the RS3 providing a clean patching environment.

Part #	Description
RS3-RWM-1	Single Sided 19 in. Cable Manager, 1U
RS3-RWM(X)-2	Single Sided 19 in. Cable Manager, 2U
RS3-RWM-2DS	Double Sided 19 in. Cable Manager, 2U
RS3-RWM(X)-4	Single Sided 19 in. Cable Manager, 4U

Use (X) to specify finger length:  
Blank = 101mm (4 in.) Fingers  
6 = 152mm (6 in.) Fingers

See Cable Management Capacity Table in the Cable Management Section of our E-Catalog on our Website



RS3-RWM-1



RS3-RWM-2



RS3-RWM-2DS



RS3-RWM-4

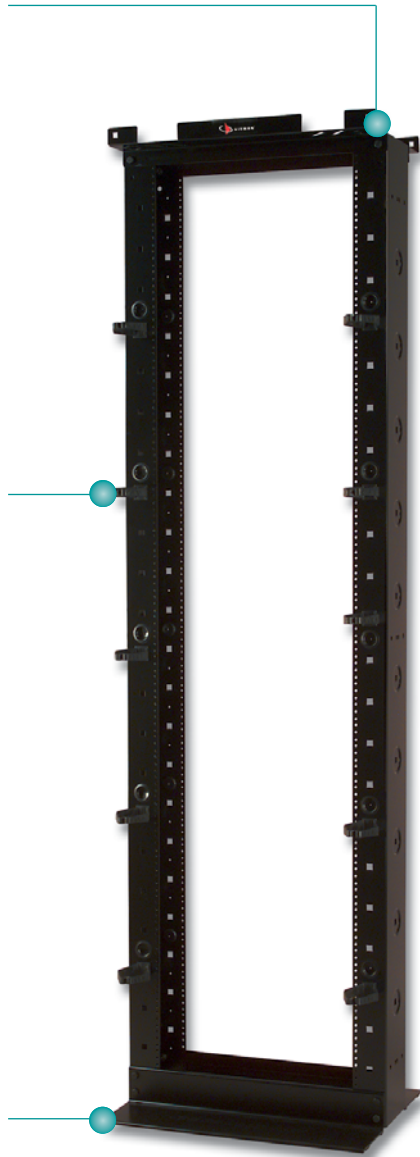
# RS Rack System

Siemon's RS series cable management rack system combines a 2.1m (7 ft.) x 0.48m (19 in.) black rack with cable management accessories to provide a complete cable management solution. Ideal for all size installations, the rack features fully usable 45U capacity.

**Cable Tray Compatibility** — Header bars incorporate unique slotted holes for securing cable trays routed perpendicular to or parallel with RS racks

**Twist-Lock Cable Managers** — High capacity twist-lock cable managers lock into place quickly without use of screws or mounting tools and can be easily located in many positions on the front, side, back, and within channel to provide customized cable management

**Anchoring** — Mounting holes provided for anchoring rack to floor



### High Capacity Side Rails

76 x 152mm (3 x 6 in.) vertical side rail channels on rack provide large area for routing high volumes of horizontal or backbone cables.



### Complete Management System

Comprehensive cable management can be created using Siemon's Vertical Patching Channels (VPC-6 and VPC-12) and RS Series Horizontal Cable Managers.



### Optional Vertical Cable Channels

Optional vertical cable management channels (RS-CNL and RS-CNL3) allow a high volume of patch cords to be routed between two racks or within a single rack.

## RS Rack System

Part #	Description
RS-07-S	2.1 x 0.48m (7 ft. x 19 in.) steel cable management rack system, 45U. Includes: rack assembly hardware, 10 high-capacity cable managers, 10 hook and loop cable managers, grommets, and ground lug <i>height: 2.1m (7 ft.), width: 609.6mm (2 ft.), depth: 457.2mm (1.5 ft.)</i>

*Note: Aluminum racks are available (P/N: RS-07) and intended for use with connecting hardware and cable managers only. For mounting of active equipment, steel racks are recommended.*

See Cable Management Capacity Table in the Cable Management Section of our E-Catalog on our Website



## Extended Depth RS Rack System

Siemon has developed a rack for managing extra large volumes of horizontal cables. The extended depth rack features vertical channels which are 0.37m (1.2 ft.) deep. These channels include multiple mounting holes allowing the user to configure Siemon's twist-lock hook and loop cable managers for properly managing large individual bundles of cables. The footers have also been designed to retain the 0.61m (2 ft.) overall footprint.

Part #	Description
RS-07E	2.1 x 0.48m (7 ft. x 19 in.) aluminum extra-deep cable management rack system, 45U. Includes rack assembly hardware, 10 high-capacity cable managers, 10 hook and loop managers, grommets and ground lug <i>height: 2.1m (7 ft.), width: 609.6mm (2 ft.), depth: 609.6mm (1.5 ft.)</i>

*Note: Aluminum racks are intended for use with connecting hardware and cable managers only. For mounting of active equipment, steel racks such as RS-07-S are recommended.*

See Cable Management Capacity Table in the Cable Management Section of our E-Catalog on our Website



## RS Series Horizontal Cable Managers

Siemon's RS series cable managers are designed for use with Siemon's RS-07 racks in conjunction with Siemon's Vertical Patching Channel (VPC). The hinged cover extends across the vertical channels of the RS-07 to fully conceal patch cords into the VPC.

Part #	Description
RS-RWM-1	Single Sided 19 in. Cable Manager, 1U
RS-RWM(X)-2	Single Sided 19 in. Cable Manager, 2U
RS-RWM-2DS	Double Sided 19 in. Cable Manager, 2U
RS-RWM(X)-4	Single Sided 19 in. Cable Manager, 4U

*Use (X) to specify finger length:  
Blank = 100 mm (4 in.) Fingers  
6 = 152 mm (6 in.) Fingers*

See Cable Management Capacity Table in the Cable Management Section of our E-Catalog on our Website



RS-RWM-2



RS-RWM-2DS

## Rack Accessories

Siemon offers a full range of accessories to allow further customization of Siemon racking systems.

RS-VCM.....

Quarter-turn hook and loop cable managers includes roll of 10 457mm (18 in.) hook and loop black cable managers and 10 quarter-turn mounting clips



RS-CH.....

Quarter-turn cable managers



RS-P04.....

1.2m (4 ft.) power strip for rear of rack, ten 15A outlets resettable fuse (includes mounting hardware)



SCREW-1224.....

#12-24 Slotted head screws with washers, black, bag of 100



RS-CNL-MGR.....

Channel retainers for use with VPC-6, VPC-12, RS-CNL and RS-CNL3



PH-3.....

3U panel access hinge includes integral 1U panel with 5 removable cable managers and accepts one 2U or two 1U patch panels



**Technical Tip!**  
For information on Siemon's Power Distribution Units (PDUs) see Power and Cooling Section 12.0.

Note: 1U = 44.5mm (1.75 in.)

## Rack Hinge

Siemon rack hinges are designed to allow rack mounted patch panels to swing out (horizontally) from the rack. The hinges are available in 2 and 3U sizes which can be combined to mount 4 and 6U panels. The 2U hinge is capable of mounting one 2U or two 1U panels.

Part #	Description	U
RHNG-2.....	Rack hinge.....	2
RHNG-3.....	Rack hinge.....	3

Note: 1U = 44.5mm (1.75 in.)



## 19 to 23 Inch Panel Adapters

These adapters allow 19 inch panels to be mounted to 23 inch racks. The adapters are designed so the panels fit flush with other 23 inch products when mounted (screws included). They can be end-stacked to support larger panel sizes.

Part #	Description
1923-(X).....	19 to 23 inch panel adapter (set of 2)

Use (X) to specify adapter size: 2 = 2U, 3 = 3U, 4 = 4U, 5 = 5U, 6 = 6U

Note: 1U = 44.5mm (1.75 in.)

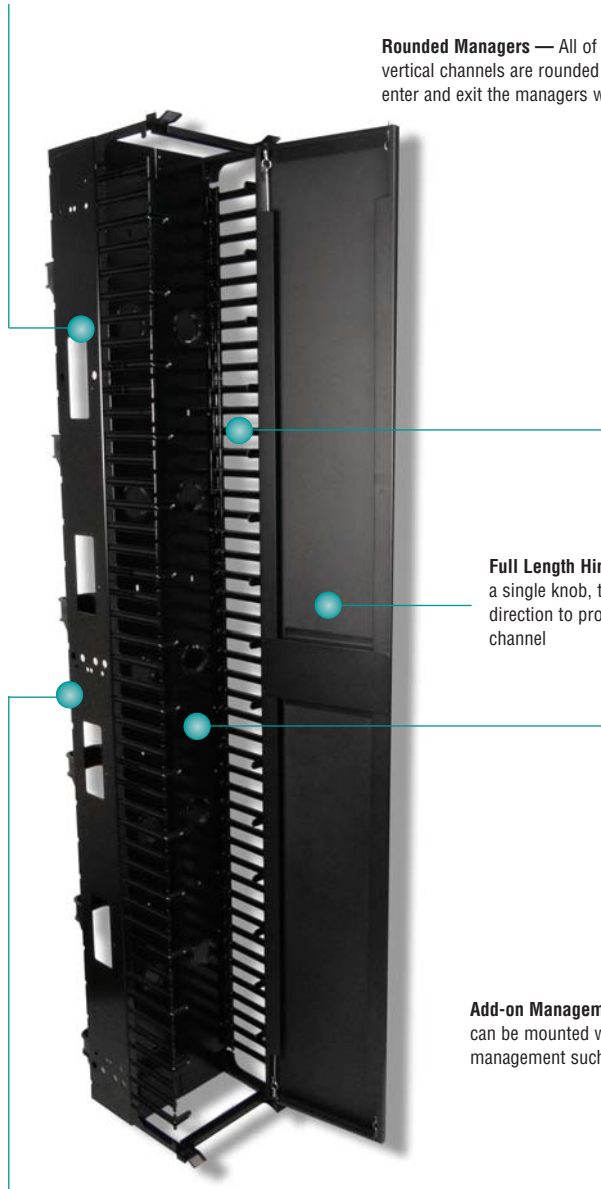




# Vertical Patching Channels (VPC)

Siemon's Vertical Patching Channel (VPC) sets the standard for cable management systems by improving appearance, accessibility and cable routing on both the front and rear of the rack. Designed as a stand-alone manager to be mounted between adjacent racks the VPC features a full length, hinged door on the front to conceal patch cord routing. The rear manager is open for ready routing of large bundles of horizontal/backbone cabling. With its easy access design, high capacity and professional appearance, the VPC is ideal for both installers and end users alike.

**Cable Access Holes** — Allow cables to route easily between the front and rear of the channel



**Rounded Managers** — All of the cable routing points on the vertical channels are rounded to allow patch cords to seamlessly enter and exit the managers without risk of cable deformation

**Full Length Hinged Covers** — With an easy turn of a single knob, the full-length cover hinges in either direction to provide access to the entire vertical channel

**Add-on Management** — Optional quarter-turn cable managers can be mounted within vertical channels for additional management such as segregation of application specific cords

**Open Compatibility** — Mounting holes on side of VPC provides compatibility with common 76mm (3 in.) and 152mm (6 in.) industry racking systems including Siemon's RS-07 and XLBET frames as well as Siemon's extended depth RS-07 rack system



## Hinged Managers

Rear channel retainers can be hinged in either direction and are removable enabling relocation to any position along the rear vertical channel.



## Side Stackable

The VPC is fully side stackable for use in ultra high density environments. The doors can be individually opened 60° or adjacent doors can be opened for full access.



## High Capacity

The front vertical managers feature .02m<sup>2</sup> - .05m<sup>2</sup> (36 - 72 sq. in.) of space providing capacity to meet the rigorous demands of today's high density environments. The rear channel features the same capacity with an open design to facilitate easy routing to termination fields.

## Vertical Patching Channels (VPC)

Part #	Description
VPC-6	2.1m x 152mm (6.9 x 0.5 ft.) vertical patching channel. Includes front cover, 6 rear channel retainers and mounting hardware <i>height: 2.1m (7 ft.), width: 152.4mm (6 in.), depth: 433mm (17 in.)</i>
VPC-12	2.1m x 305mm (6.9 x 1 ft.) vertical patching channel. Includes front cover, 12 rear channel retainers and mounting hardware <i>height: 2.1m (7 ft.), width: 304.8mm (12 in.), depth: 433mm (17 in.)</i>



VPC-6



VPC-12



RS-07 shown with two VPC-6's

See Cable Management Capacity Table in the Cable Management Section of our E-Catalog on our Website

## Vertical Cable Management Channels

Siemon's single-sided vertical cable management channels provide an economic solution for managing large cable bundles between adjacent racks. They feature an open design with six easily configured dual-hinge managers (additional managers available separately) that enable customized management of patch cords. Cable access holes allow cords to be routed between the front and rear of the channel. Mounting holes within the channel accommodate Siemon's quarter-turn cable managers (p/n RS-CH) and quarter-turn hook and loop cable managers (p/n RS-VCM) for further customization of cable routing. The channels are available in both 76mm (3 in.) and 152mm (6 in.) depths for use with standard 76mm (3 in.) racks or 152mm (6 in.) deep cable management racks such as Siemon's RS-07. Alternately, the 76mm (3 in.) deep channels can be stacked back to back with the deeper cable management racks such as Siemon's RS-07E to optimize management of cables on both sides of the channel.

RS-CNL

2.1m x 152mm (6.9 x 0.5 ft.) vertical cable management channel for mounting between 152mm deep racks (includes mounting hardware)

*height: 2.1m (7 ft.),  
width: 152.4 mm (6 in.),  
depth: 224.8 mm (9 in.)*



RS-CNL3

2.1m x 76mm (6.9 x 0.25 ft.) vertical cable management channel for mounting between 76mm deep racks (includes mounting hardware)

*height: 2.1m (7 ft.),  
width: 152.4 mm (6 in.),  
depth: 148.6 mm (6 in.)*

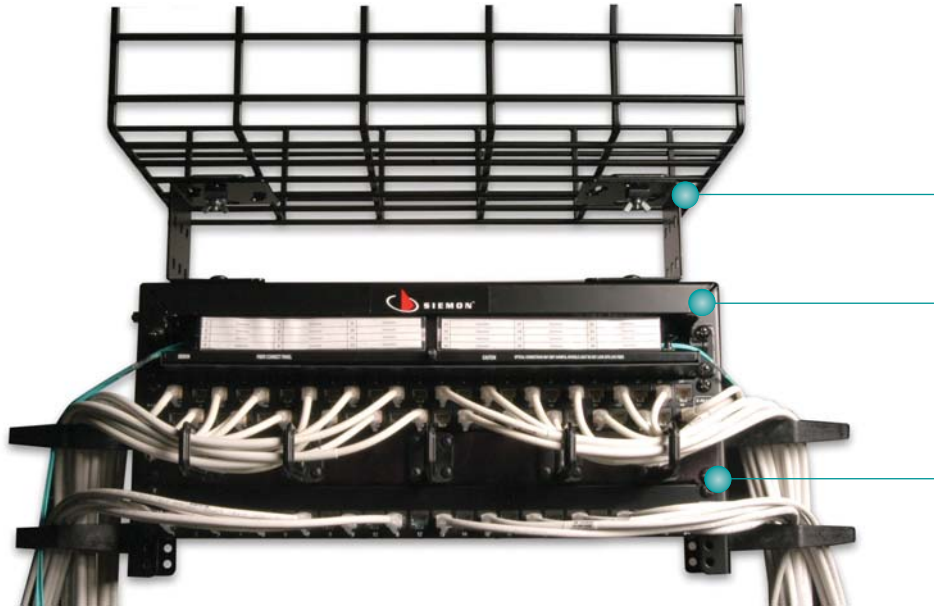


Two RS-07's shown with three RS-CNL's

See Cable Management Capacity Table in the Cable Management Section of our E-Catalog on our Website

# Cable Tray Rack

Designed to mount directly to overhead ladder rack or cable tray, Siemon's Cable Tray Rack delivers 4U of easily installed and accessible 19 inch rack mount space above cabinets and racks without consuming additional floor space, making it ideal for use as a Zone Distribution Area (ZDA) or Equipment Distribution Area (EDA) in data centers. Used with copper patch panels or fiber enclosures, the cable tray rack can increase cabling density, improve cable routing, simplify moves, adds and changes and provide pre-cabled connectivity for rapid deployment of new cabinets, racks and equipment.



**Improved Thermal Efficiency —**

Helps improve airflow by managing patching fields and cabling above cabinets and racks, minimizing obstruction of equipment cooling features.

**Rapid Data Center Deployment —**

Can be used in conjunction with Siemon's pre-terminated copper and fiber solutions to reduce installation time.

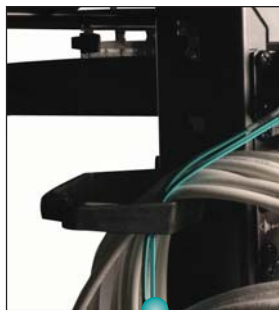
**Open Compatibility —**

Rack mount solution attaches to all common overhead cable tray and ladder rack systems, including Siemon's RouteIT system.



**Flexible Mounting —**

Unique design can be mounted below, flush or above cable tray in both parallel and perpendicular configurations.



**Flexible Cable Routing —**

High capacity ¼-turn twist-lock cable managers lock into place quickly without use of screws or mounting tools and can be easily located to provide customized cable management.



**Floor Space Maximization —**

Provides 4U of standard 19 inch rack mount space above cabinets and racks to maximize cabling density/ minimize data center floor space needs.

**MAJOR PRODUCT FEATURES:**

- 4U size
- CEA-310-E compliant mounting holes
- Robust 12 gauge steel construction
- Smooth black powder coat finish
- Mounting hardware and cable management included
- 267 N (60 lb) load rating

**Ordering Information:**

**CTR-04-01** .....0.48m (19 in.) Cable Tray Rack, 4U, Black, #12-24.  
Includes mounting hardware,  
(4) 1/4 turn cable managers, ground lugs

*\*Add "C" to end of part number for cage nut version (includes 16 M6 cage nuts)*

**CTR-LRK**..... Ladder Rack Mounting Kit for  
Cable Tray Rack



**Mounting Examples:**



**Perpendicular to Tray  
(Below)**



**Parallel to Tray  
(Flush)**



**Parallel to Ladder Rack  
(Below)**

*Other sizes available. Contact Customer Service for more information.*

## WM Series Horizontal Cable Managers

The WM series cable managers provide increased strength and do not interfere with panels mounted above or below. They are a popular and economical solution for providing a clean and simple means of organizing small-to-large bundles of cables and patch cords.

Part #	Description
WM-143-5	Horizontal cable manager with five S143 hangers 1U
WM-144-5	Horizontal cable manager with five S144 hangers, 2U
WM-145-5	Horizontal cable manager with five S145 hangers, 2U

Note: 1U = 44.5mm (1.75 in.)



WM-143-5



WM-144-5



WM-145-5

## Cable Hangers

The cable hanger design features structural integrity and sleek appearance. These cable hangers are ideal for routing small to very large quantities of cables. The durable plastic design ensures reliability for any application.

Part #	Height	Width	Depth
S143*	44mm (1.7 in.)	38mm (1.5 in.)	89mm (3.5 in.)
S144*	87mm (3.4 in.)	57mm (2.2 in.)	74mm (3.0 in.)
S145*	87mm (3.4 in.)	57mm (2.2 in.)	125mm (5.0 in.)
S146	151mm (6.0 in.)	63mm (2.4 in.)	130mm (5.1 in.)
S147	254mm (10.0 in.)	63mm (2.4 in.)	130mm (5.1 in.)

\*Add "-A" for optional adhesive backing.



S143



S146



S144



S147



S145

## Reusable Hook and Loop Cable Managers

These cable managers are simple, yet extremely effective when used to bundle cables. To accommodate different sized bundles, they are available in 152mm (6 in.), 305mm (12 in.), or 457mm (18 in.) lengths. They can be easily loosened and removed to service cable and then tightened and reinstalled when the cables are rebundled. The handy dispenser rolls/spools are neat, convenient and quick. Adjustable tension prevents "over-cinched" conditions. A mounting hole in each hook and loop manager enables the manager to be mounted to a wall or rack.

Part#	Description
VCM-25-(XX)-(XX)	Roll of 25 cable managers
VCM-250-(XX)-(XX)	Spool of 250 cable managers

Use 1st (XX) to specify length:

06 = 152mm (6 in.), holds 51mm (2 in.) diameter cable bundle

12 = 305mm (12 in.), holds 102mm (4 in.) diameter cable bundle

18 = 457mm (18 in.), holds 153mm (6 in.) diameter cable bundle

Use 2nd (XX) to specify color: 01 = black, 02 = white, 03 = red, 04 = gray, 05 = yellow, 06 = blue



Wrap-around cable managers offer a simplified approach to cable management... secure it to a single cable and then wrap it around the entire bundle.



Hook and Loop cable managers have a large head for added strength and a mounting hole is included for securing to a wall or rack.

### Technical Tip!

Hook and loop cable managers are recommended as an alternate to plastic cable ties for the reduction of alien crosstalk in Category 6A UTP installations.

## Stand-Off Brackets

Siemon hinged stand-off brackets can be mounted to a wall with the hinge on either side for convenient access to the back of the panel. The sides of the brackets will accept our S144 or S145 cable hangers for external cable management. The brackets accept any combination of Siemon patch panels and rack-mount cable management. Mounting hardware included.



<b>Part #</b> SBH-2 ..... 2U	<b>Part #</b> SBH-3 ..... 3U	<b>Part #</b> SBH-4 ..... 4U	<b>Part #</b> SBH-6* ..... 6U
---------------------------------	---------------------------------	---------------------------------	----------------------------------



height: See U information, width: 483mm, depth: 152mm

\*Add -2 for (3) independent 2U hinges (instead of a single 6U hinge).  
Note: 1U = 44.5mm (1.75 in.)

## Blank Filler Panels

Blank filler panels are ideal for installations where open or expansion rack space is to be covered. Panels are blank on one side and feature the Siemon logo on the other side.

Part #	Description
PNL-BLNK-(X).....	Blank filler panel for 19 inch rack



Use (X) to specify rack mount space height of panel: 1 = 1U, 2 = 2U, 3 = 3U, 4 = 4U  
Note: 1U = 44.5mm (1.75 in)

## Double-Sided Heavy Duty 19 Inch Equipment Shelf

Siemon's double-sided 19 inch equipment shelf is designed to support heavy equipment loads up to 68.1 kg (150 lbs.). The shelf is designed for use with any 152mm (6 in.) deep rack and is secured to the front and rear of the rack channels. Shelf accommodates equipment up to 432mm (17 in.) wide.

Part #	Description
SH-D19-01 .....	19 inch double-sided equipment shelf for 152mm (6 in.) deep racks, solid, 3 RMS height: 133mm (5.25 in.), width: 483mm (19 in.), depth: 457mm (18 in.)
SH-S19-01 .....	Single Sided Equipment Shelf - Solid -19 in.
SH-S19V-01 .....	Single Sided Equipment Shelf - Vented -19 in.

Note: 1 RMS = 44.5mm (1.75 in.)



SH-D19-01



SH-S19V-01

## RWM Series Horizontal Cable Managers

The multi-access horizontal cable managers are designed to provide both front and rear cable management in a compact, 1U space. The managers feature high capacity slots for entering and exiting cables, removable covers to conceal patch cords, and an innovative cable retention design to prevent patch cords from falling out when the covers are removed. The rear of the RWM-1 features attachments for using Siemon's hook and loop cable managers.



RWM-1



RWM-1DS

Part #	Description
RWM-1	Single-sided horizontal cable manager with cover
RWM-1DS	Double-sided horizontal cable manager with covers

Note: 1U = 44.5mm (1.75 in.)

## S110®/S210® Horizontal Cable Managers

The S110/S210 cable managers provide an economical, superior cable management solution in a compact space. 1U and 2U size and large capacity provide excellent cable management for 19 inch rack mount installations.



Part #	Description
S110-RWM-01	S110/S210 horizontal cable manager with covers, black, 1U
S110-RWM-02	S110/S210 horizontal cable manager with covers, white, 1U
S110-RWM2-01	S110/S210 horizontal cable manager with covers, black, 2U
S110-RWM2-02	S110/S210 horizontal cable manager with covers, white, 2U

Note: 1U = 44.5mm (1.75 in.)

## Rear Cable Manager

Siemon rear cable manager can be mounted to the back side of a double-sided 19 inch rack, or can be mounted between a patch panel and the front face of the rack, using the same screws that hold the patch panel to the rack and the hex nuts provided. It provides strain relief anchor points and organization of horizontal cables being routed to the back of the patch panel.



WM-BK	Rear cable manager with mounting screws and hex nuts
-------	--



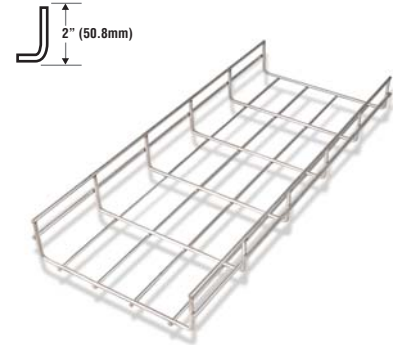
# RoutelT™ Wire Mesh Cable Tray System

## Cable Tray Ordering Information

RoutelT cable trays are available in an array of sizes and configurations to support nearly any data center and network pathway configuration. Standard tray finishes are pre-galvanized (silver) and black powder coat. Additional finishes are available upon request.

### 2 Inch DEEP BASKET TRAYS

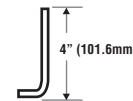
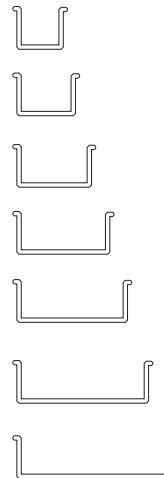
Part Number	Width		Weight Per Piece	
RTT(X)-204 -(XX)	4 in.	100mm	8.2 lbs.	3.72kg
RTT(X)-206 -(XX)	6 in.	150mm	10.2 lbs.	4.62kg
RTT(X)-208 -(XX)	8 in.	200mm	11.8 lbs.	5.35kg
RTT(X)-212 -(XX)	12 in.	300mm	15 lbs.	6.80kg
RTT(X)-216 -(XX)	16 in.	400mm	23 lbs.	10.43kg
RTT(X)-218 -(XX)	18 in.	450mm	25 lbs.	11.33kg
RTT(X)-220 -(XX)	20 in.	500mm	27 lbs.	12.24kg
RTT(X)-224 -(XX)	24 in.	600mm	31 lbs.	14.06kg



Height: 2 in. (50.8 mm)  
Length: 118.125 in. (3 meters)  
Wire Dia Minimum: 0.197 in. (5.0 mm)

### 4 Inch DEEP BASKET TRAYS

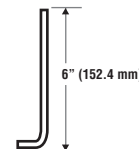
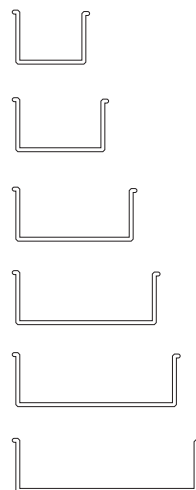
Part Number	Width		Weight Per Piece	
RTT(X)-404 -(XX)	4 in.	100mm	11.8 lbs.	5.35kg
RTT(X)-406 -(XX)	6 in.	150mm	12.8 lbs.	5.81kg
RTT(X)-408 -(XX)	8 in.	200mm	15 lbs.	6.80kg
RTT(X)-412 -(XX)	12 in.	300mm	13 lbs.	10.43kg
RTT(X)-416 -(XX)	16 in.	400mm	27 lbs.	12.24kg
RTT(X)-418 -(XX)	18 in.	450mm	29 lbs.	13.15kg
RTT(X)-420 -(XX)	20 in.	500mm	31 lbs.	14.06kg
RTT(X)-424 -(XX)	24 in.	600mm	35 lbs.	15.88kg



Height: 4 in. (101.6 mm)  
Length: 118.125 in. (3 meters)  
Wire Dia Minimum: 0.197 in. (5.0 mm)

### 6 Inch DEEP BASKET TRAYS

Part Number	Width		Weight Per Piece	
RTT(X)-608 -(XX)	8 in.	200mm	23 lbs.	10.43kg
RTT(X)-612 -(XX)	12 in.	300mm	27 lbs.	12.24kg
RTT(X)-616 -(XX)	16 in.	400mm	31 lbs.	14.06kg
RTT(X)-618 -(XX)	18 in.	450mm	33 lbs.	14.97kg
RTT(X)-620 -(XX)	20 in.	500mm	35 lbs.	15.88kg
RTT(X)-624 -(XX)	24 in.	600mm	39 lbs.	17.69kg

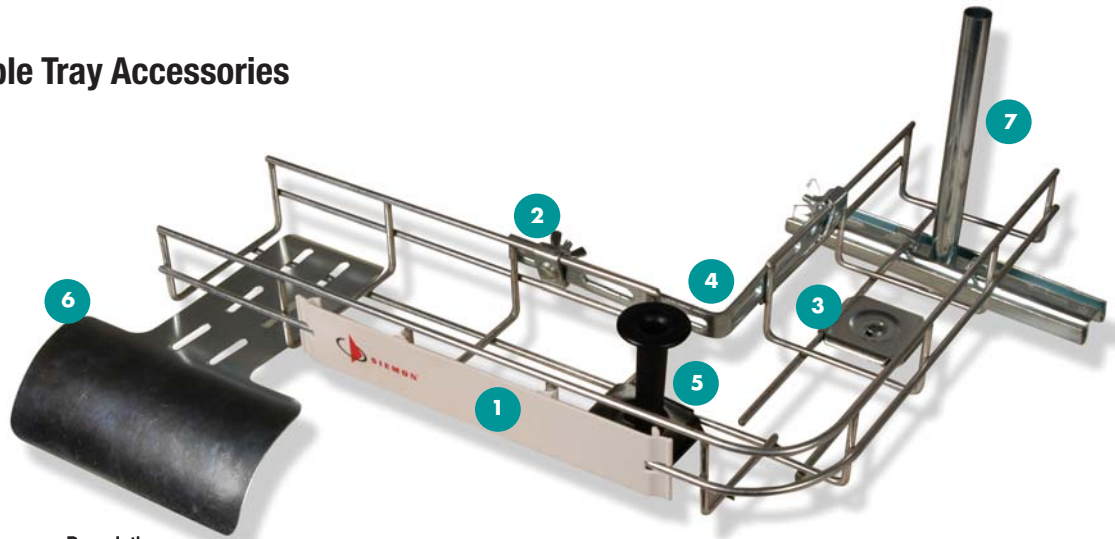


Height: 6 in. (152.4 mm)  
Length: 118.125 in. (3 meters)  
Wire Dia Minimum: 0.197 in. (5.0 mm)

Use 1st (X) to specify wire form: Blank = Standard round, E = Elongated  
Use (XX) to specify tray finish: PS = Pre-galvanized (silver), P1 = Powder Coat Black



## RoutelT™ Cable Tray Accessories



Part #	Description
<b>1</b> RTT-LC	Tray Clips Label clip for tray identification, 10/box
<b>2</b> RTS-1-(XX)	Washer Splice Kit Connects multiple lengths of tray Also used for attachment of splice bars and corner guide splice as well as field sweeps and reducers, 50/box
<b>3</b> RTS-2-(XX)	Washer Support Provides increased support in straight-tray splices and field junctions/bends, (washer only), 50/box
RTS-2H-(XX)	Washer Support Kit Provides increased support in straight-tray splices and field junctions/bends Includes 2 washers, 1 screw, and 1 wingnut, 50/box
RTS-3-(XX)	Bar Splice Provides increased rigidity when used with washer splice in side rail use, 50/box
<b>4</b> RTS-4-(XX)	Corner Guide Splice Supports 90° corner splice. For use with all tray sizes, 2 splices, 8 nuts/box
<b>5</b> RTR-G-P1	Corner Cable Guide Protects and maintains correct cable bend radius in corners, 1/box
RTA-U1-(XX)	Vertical Up Secures cable and protects bend radius at upward vertical transitions, 1/box
<b>6</b> RTA-D1-(XX)	Vertical Down (Drop Out) Protects bend radius at drop points, 1/box
RTA-B08-(XX)	Termination Bracket Secures end of tray runs to wall or other vertical structures, 1/box
RTC-T-(XX)	Ceiling Support Trapeze Clips to tray side and attaches to standard 1/2 in. and 3/8 in. threaded rods for ceiling mount Quick-release allows for side cable loading, 50/box

Part #	Description
RTW-(XX)-(XX)	Triangle Wall Support For wall mounting of RoutelT Tray. 1/box.
	Finish <b>PS</b> = Pre-galvanized (silver) <b>P1</b> = Powder Coat Black
	Width <b>04</b> = 4 in. <b>16</b> = 16 in. <b>06</b> = 6 in. <b>18</b> = 18 in. <b>08</b> = 8 in. <b>20</b> = 20 in. <b>12</b> = 12 in. <b>24</b> = 24 in.
<b>7</b> RTC-C(XX)-(XX)	Ceiling Support Center Can be mounted over 1/4 in., 3/8 in. or 1/2 in. threaded rod. 1/box.
	Finish <b>PS</b> = Pre-galvanized (silver) <b>P1</b> = Powder Coat Black
	Width <b>04</b> = 4 in. <b>16</b> = 16 in. <b>06</b> = 6 in. <b>18</b> = 18 in. <b>08</b> = 8 in. <b>20</b> = 20 in. <b>12</b> = 12 in. <b>24</b> = 24 in.
RTC-P(XX)-(XX)	Profile Ceiling Support Affixes to standard 1/2 in. or 3/8 in. threaded rods for trapeze-style support of tray sections. 1/box.
	Finish <b>PS</b> = Pre-galvanized (silver) <b>P1</b> = Powder Coat Black
	Width <b>12</b> = 12 in. <b>20</b> = 20 in. <b>16</b> = 16 in. <b>24</b> = 24 in. <b>18</b> = 18 in.

Use (XX) to specify finish: PS - Pre-galvanized (silver), P1 - Powder Coat Black

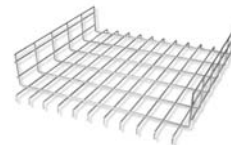
## Under Floor Tray & Accessories

Under-floor tray supports come in various configurations, including mounting pedestals, brackets for multi-level pathways and vertical supports designed to mount tray independently of raised floor assemblies. Also included is an seismic-rated under-floor mounting bracket that integrates both vertical pedestals and horizontal tray support into a single, easy to install unit.

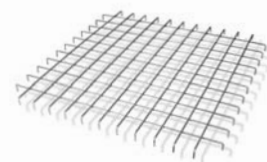
### UNDER FLOOR TRAY CHARTS

Siemon Part #	Tray Size (D x W x L)				Weight (per piece)	
	Depth (in.)	Width (in.)	Length (ft.)	(mm.)	(lbs.)	(kg.)
RTR(X)-T2122-PS	2	12	2	51 x 305 x 610	3.1	1.41
RTR(X)-T2124-PS	2	12	4	51 x 305 x 1219	6.2	2.81
RTR(X)-T4122-PS	4	12	2	102 x 305 x 610	3.75	1.70
RTR(X)-T4124-PS	4	12	4	102 x 305 x 1219	7.5	3.40
RTR(X)-T6122-PS	6	12	2	152 x 305 x 610	4.42	2.00
RTR(X)-T6124-PS	6	12	4	152 x 305 x 1219	8.85	4.01
RTR(X)-T2242-PS	2	24	2	51 x 610 x 610	4.76	2.20
RTR(X)-T2244-PS	2	24	4	51 x 610 x 1219	9.5	4.31
RTR(X)-T4242-PS	4	24	2	102 x 610 x 610	5.42	2.50
RTR(X)-T4244-PS	4	24	4	102 x 610 x 1219	10.84	4.92
RTR(X)-T6242-PS	6	24	2	152 x 610 x 610	6.06	2.75
RTR(X)-T6244-PS	6	24	4	152 x 610 x 1219	12.12	5.50

Use (X) to specify wire form: Blank = Standard round, E = Elongated



UNDER FLOOR SECTION



FITTING FLAT



UNDERFLOOR SUPPORT INTERSECTION FITTING



HORIZONTAL/VERTICAL UNDER FLOOR SUPPORT



12 in. C-BRACKET MOUNT



UNDERFLOOR SECURING CLIP

#### Part # Description

RTR-F0242-PS . . . . . Fitting Flat  
Self supporting under floor tray section  
24 x 24 in. (610 x 610mm)

RTR-HVF-PS . . . . . Under Floor Support Intersection Fitting  
Installs between horizontal/vertical underfloor supports to create a mounting point for intersecting tray

RTR-HV(XX)-PS . . . . . Horizontal/Vertical Under Floor Support  
Unique design combines horizontal mounting bar and vertical support members for all-in-one, seismic-rated tray support

Height

- 04 = 4 in.    14 = 14 in.
- 06 = 6 in.    18 = 18 in.
- 08 = 8 in.    20 = 20 in.
- 10 = 10 in.   24 = 24 in.
- 12 = 12 in.

RTR-C12-PS . . . . . 12 in. C-Bracket Mount  
Used in conjunction with under floor supports to create multi-tier/multi-level pathways

RTR-1-PS . . . . . Underfloor Securing Clip  
Secures tray to underfloor supports and C-bracket mount, 50/box

## Additional Tray Data

### ELONGATED WIRE CONSTRUCTION

Simon's RoutelT™ cable tray is offered in an elongated wire construction that increases the surface area of the tray cross-members by 400%, decreasing cable strain up to 65% and reducing cable deformation that can negatively impact overall network performance. Also available in standard round wire design, the trays feature a robust, steel welded construction for reliable support of maximum cable capacities. Both elongated and round wire designs have rounded edges at all critical points and snag-proof "t-welded" top wire construction to prevent damage to cables.

### TRAY SPLICE REQUIREMENTS

This chart provides information on the number of splices required to join (2) lengths of cable tray.

Simon Part #	Tray Size (W x D)		Number of Splices
	in.	mm.	
RTT(X)-204-(XX)	2 x 4	51 x 101	2
RTT(X)-206-(XX)	2 x 6	51 x 152	4
RTT(X)-208-(XX)	2 x 8	52 x 203	4
RTT(X)-212-(XX)	2 x 12	51 x 304	4
RTT(X)-216-(XX)	2 x 16	51 x 406	4
RTT(X)-218-(XX)	2 x 18	51 x 457	4
RTT(X)-220-(XX)	2 x 20	51 x 508	5
RTT(X)-224-(XX)	2 x 24	51 x 610	5
RTT(X)-404-(XX)	4 x 4	101 x 101	4
RTT(X)-406-(XX)	4 x 6	101 x 152	5
RTT(X)-408-(XX)	4 x 8	101 x 203	6
RTT(X)-412-(XX)	4 x 12	101 x 304	6
RTT(X)-416-(XX)	4 x 16	101 x 406	7
RTT(X)-418-(XX)	4 x 18	101 x 457	7
RTT(X)-420-(XX)	4 x 20	101 x 508	7
RTT(X)-424-(XX)	4 x 24	101 x 610	8
RTT(X)-608-(XX)	6 x 8	152 x 203	6
RTT(X)-612-(XX)	6 x 12	152 x 304	6
RTT(X)-616-(XX)	6 x 16	152 x 406	7
RTT(X)-618-(XX)	6 x 18	152 x 457	7
RTT(X)-620-(XX)	6 x 20	152 x 508	7
RTT(X)-624-(XX)	6 x 24	152 x 610	8



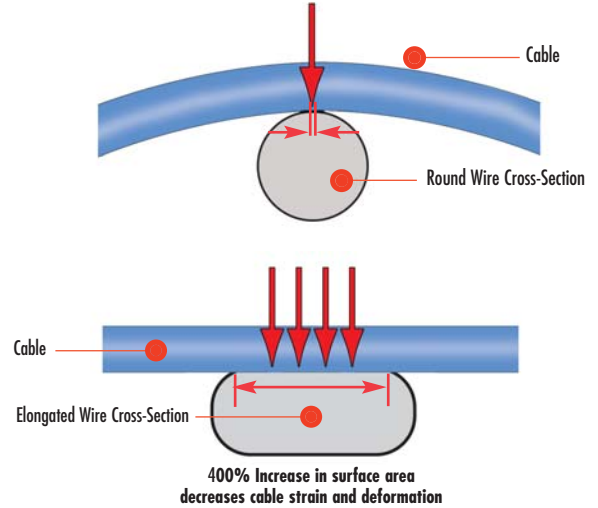
In lieu of post-manufacturing chemical cleaning, pre-galvanized tray is mechanically cleaned after welding.



Unlike other colored trays, RoutelT's black powder coat finish is cULus Certified so no paint removal is necessary at splice points for proper tray grounding.



The T-Weld Design of the RoutelT's tray provides additional safety from sharp edges for installers and cabling.



### LOAD RATINGS

Simon Part #	lbs./ft.
RTT(X)-204-(XX)	43
RTT(X)-206-(XX)	50
RTT(X)-208-(XX)	52
RTT(X)-212-(XX)	58
RTT(X)-216-(XX)	70
RTT(X)-218-(XX)	70
RTT(X)-220-(XX)	73
RTT(X)-224-(XX)	75
RTT(X)-404-(XX)	45
RTT(X)-406-(XX)	49
RTT(X)-408-(XX)	78
RTT(X)-412-(XX)	78
RTT(X)-416-(XX)	108
RTT(X)-418-(XX)	116
RTT(X)-420-(XX)	116
RTT(X)-424-(XX)	116
RTT(X)-608-(XX)	116
RTT(X)-612-(XX)	123
RTT(X)-616-(XX)	123
RTT(X)-618-(XX)	127
RTT(X)-620-(XX)	127
RTT(X)-624-(XX)	150
RTR(X)-F0242-PS	67
RTTR(X)-T2122-PS	65
RTTR(X)-T2124-PS	65
RTTR(X)-T2242-PS	116
RTTR(X)-T2244-PS	115
RTTR(X)-T4122-PS	143
RTTR(X)-T4124-PS	143
RTTR(X)-T4242-PS	116
RTTR(X)-T4244-PS	115
RTTR(X)-T6122-PS	157
RTTR(X)-T6124-PS	157
RTTR(X)-T6242-PS	151
RTTR(X)-T6244-PS	151

## RouteIT™ J-HOOKS

Available in 2 and 4 inch sizes, Siemon RouteIT J-Hooks offer a variety of fastening options, including clips or wire for structural steel mounting as well as screw-in or threaded rod fasteners for wall-mounting. To ensure a long functional lifecycle, these durable steel hooks are treated with an innovative three layer corrosion protection system. RoHS compliant and approved for use with cULus®, this finish also provides a smoother cable-bearing surface, simplifying cable pull and installation procedures.

### 2 inch J-HOOKS

Part #	Description
JH2	.2 in. Stand-Alone Hook, 60/box
JC2-10	.2 in. Hook w/ Fixed Beam Clamp, 40/box
JC2-10C	.2 in. Hook w/ 360° Rotating Beam Clamp, 20/box
JC2-30	.2 in. Hook w/ Angle Bracket Fastener For use as bottom mount. 1/4 in. mounting hole, 40/box
JC2-32	.2 in. Hook w/ Angle Bracket Fastener For use as bottom mount. 3/8 in. mounting hole, 40/box
JC2-71	.2 in. Hook w/ Wire-Plain Threaded Rod Fastener For use w/ drop wires, 40/box



JH2



JC2-10



JC2-10C



JC2-30



JC2-32



JC2-71

### 4 inch J-HOOKS

Part #	Description
JH4	.4 in. Stand-alone Hook, 25/box
JC4-10	.4 in. Hook W/ Fixed Beam Clamp, 25/box
JC4-10C	.4 in. Hook with 360° Rotating Beam Clamp, 25/box



JH4



JC4-10



JC4-10C

See J-Hook Cable Management Capacity in the J-Hook Section of our E-Catalog on our Website