

Premium Automatic Folder

# Skyline Mini™

**CHICAGO®**



## THE VERSATILE SOLUTION

### One Operator Folding of a Wide Variety of Tumble Dried Items

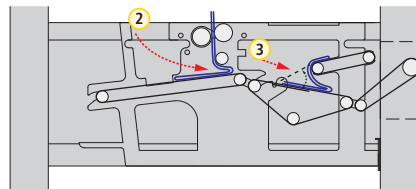
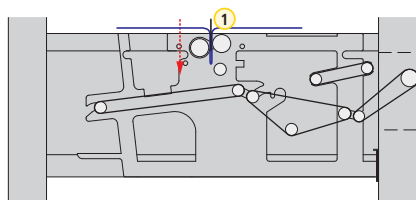
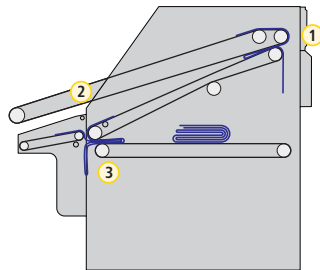
Skyline Mini offers all the standard features found on the Chicago® Skyline Blanket Folder, but in a special smaller sized edition for laundries that need a dedicated machine to process substantial quantities of tumble dried items, such as bath or thermal blankets, knitted fitted sheets and airline blankets, that do not require French style folding. Mini is just the right size to handle a variety of small, medium and large sized items, while taking up less floor space than a full size folder. Mini performs one, two or optional Triple Play with three primary folds and up to three crossfolds, depending on the size of the piece. Mini is also the only folder that can perform two crossfolds with a choice of selvage edges folded either up or down. All functions are performed with the easy-to-use **CHI•Touch** control screen with enhanced graphical user interface.

# Standard Features

The Skyline Mini features a more flexible design to allow a greater variety of items to be processed, including:

- Knitted fitted sheets
- Airline blankets
- Incontinent pads
- Bath blankets
- Patient gowns
- Spa sheets & towels
- Thermal blankets
- Pool towels

- Self-contained motor drive for conveyor eliminates mechanical parts, reduces maintenance requirements, improves efficiency, and offers an expanded range of delivery heights (from 8" [204mm] to 34" [864mm]) to better suit the needs of either operators or master conveying systems
- Large 12" diameter **CHI•Touch** control screen clearly displays piece counts and functions for operators and is large enough for operators to easily see and work with throughout the day
- **CHI•Touch** control screen allows the operator to select items to be folded by name or category, then automatically performs the correct primary and crossfolds programmed for that fold pattern
- **CHI•Touch** control screen microprocessor can automatically choose the number of crossfolds according to item size
- Unfolded fed item size may be up to 60" x 120" (1525mm x 3050mm); larger items pre-folded by an operator may be up to 120" (3050mm) wide
- Minimum piece size is 30" x 30" (762mm x 762mm); items can be processed with selvage edges folded either up or down (Consult factory for other item sizes)
- Stain/tear operator reject button for quality control
- Compact footprint allows the unit to fit in almost any laundry
- Self-adjusting pressure wheels and linen guide bar make operator feeding easier
- AC frequency inverter drive with soft start reduces stress on drive components
- Standard variable speed drive is adjustable by pushbutton through **CHI•Touch** control screen from 80 to 140 FPM
- No mechanical clutch/brake mechanisms to maintain or adjust
- Jog reverse and quick crossfold reject
- Powered static eliminator bar
- Connectable to **CHILINC** production data accumulation and reporting system



## Path of Linen

As linen moves through the system, all conveyor drive functions are performed by reliable and precise AC frequency inverters and high efficiency motors for dependability and reduced maintenance. No old technology mechanical clutch/brake devices are used anywhere in the system.

**PRIMARY** One ①, two ② or (optional) three ③ **primary folds** are performed so the finished item is in a smaller package for easy storage.

**CROSSFOLD** The **first crossfold** ① is performed by a heavy duty blade for dependability and consistency on thicker items, pushing the primary folded item through the pinch rolls with added air assist to prevent items from wrapping around rolls.

**Second crossfold** ② is performed by a clutch-free, inverter-driven reversing conveyor which creates an extremely accurate fold with selvage edges up or, with the touch of a button, the fold can be performed by a combination of lifting fingers and inverter driven reversing conveyor that raises and lowers to automatically compensate for thicker items, with selvage edges folded down. If needed, a **third crossfold** ③ can be made by a combination of lifting guides and reversing conveyor.

Items can be processed with selvage edges folded either up or down so the finished package can meet the requirements of the discerning customer.



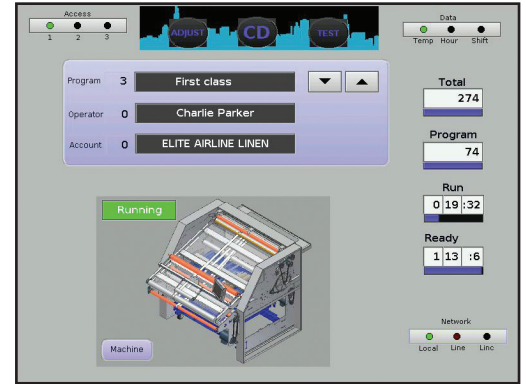
# Easy-To-Use CHI•Touch Control Screen

The new Chicago High Intelligence (CHI) Touch control screen, with enhanced graphical user interface, gives the operator more information, easier visual prompts and greater flexibility than ever before. With the touch of a finger (eliminating the old style of key coding), the user can access program details, and view dynamic 3-D graphics to help them quickly set up and begin their assignment.

Operators can easily pick a program for a specific type of linen, including the number and type of folds and, during the operation, change the setting to accommodate special needs, and then be able to resume the default program with a single touch. Linen can be tracked as it makes its way through the machine using "real time" visual feedback with animated graphics. Troubleshooting issues can be seen at a glance by using visual location illustrations for diagnostic information of problems that not only tells personnel what the problem is, but also shows exactly where it is in the system. Detailed diagrams show status of motors and inverters and, if there is a problem, motor schematics can be accessed right on the screen.

Extensive data information history is viewed easily, as the program records every action the machine makes, with problems and issues time stamped. This makes productivity assessments easy to analyze throughout a shift, or a series of shifts. With three levels of secured access, unauthorized users are not permitted to adjust settings in established programs, or to review the detailed data bank.

By far, the industry's most intuitive, visually interactive and user-friendly control screen, CHI•Touch is just one of the latest industry advancements made by Chicago.



# Skyline Mini with New Triple Play for 3 Primary Folds

This exclusive Chicago option enables up to three primary folds to be performed on large or specialty items. Triple Play folds items into a smaller finished package that fits better on shelves, allows more finished pieces to fit in bulk linen carts, and makes it even more convenient for operators to identify and handle different pieces. It also speeds production by eliminating the need to manually half-fold large pieces before automatic folding in order to achieve the desired package size. This exciting new option makes Skyline Mini Triple Play the fastest, most versatile and accurate folder available for a wide variety of healthcare, airline, and hospitality blankets, pads and other items.

Optional Triple Play gives you a smaller finished package that fits better into storage, carts or cabinets. Compact, finished item size neatly fits items in tight spaces such as airline blankets in the overhead airplane bins.



# Optional Stacker/Conveyor

For added labor savings, a stacker/conveyor is available for return of folded and stacked items to the operator at the side or rear of the folder. Various conveyor configurations are available to suit your individual space and operator requirements. Consult factory for more details.

# Skyline Mini

## Dimensions and Utilities

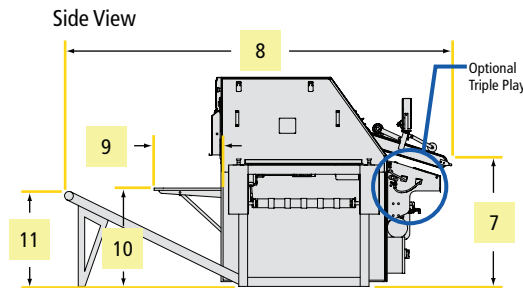
### NOTES:

1. Specifications subject to change without notice. Consult factory for certified construction floor plan.
2. Millimeter dimensions are in [ ].
3. All dimensions are  $\pm 1/2"$ .

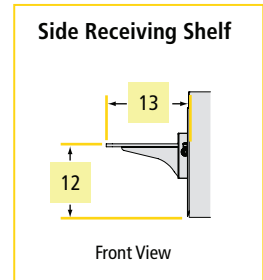
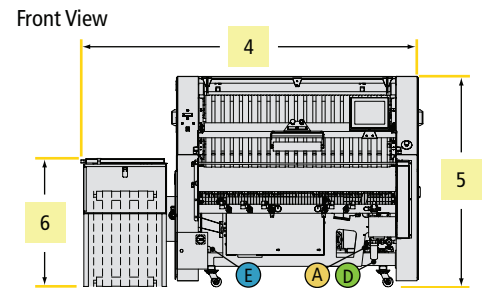
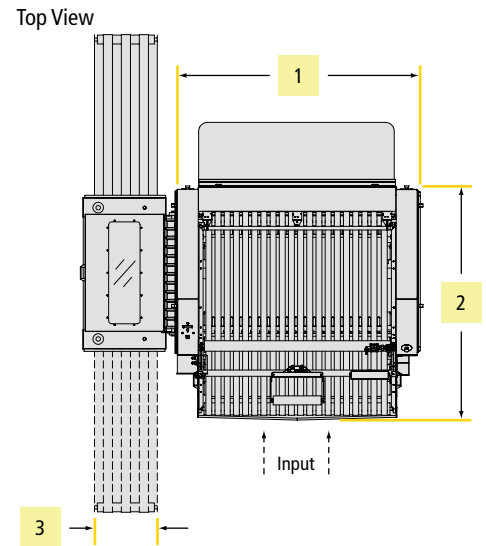
| SKYLINE MINI         |                             |                      |
|----------------------|-----------------------------|----------------------|
|                      | Standard                    | w/Triple Play Option |
| Air Connection       | (A) 1-1/2" AT 15" HT. [381] |                      |
| Compressed Air Drain | (D) 1/4" AT 9" HT. [229]    |                      |
| Electrical           | (E) 17" HT. [432]           | 14" HT. [355]        |
| 1                    | 82" [2070]                  |                      |
| 2                    | 70"-73" [1778-1857]*        | 81" [2057]           |
| 3                    | 21" [533]                   |                      |
| 4                    | 112" [2857]                 |                      |
| 5                    | 70" [1783]                  |                      |
| 6                    | 43" [1081]                  |                      |
| 7                    | 37"-43" [940-1092]*         | 44" [1111]           |
| 8                    | 121"-125" [3073-3175]*      | 130" [3302]          |
| 9                    | 22" [559]                   |                      |
| 10                   | 33" [851]                   |                      |
| 11                   | 26"-32" [660-813]*          |                      |
| 12                   | 27" [683]                   |                      |
| 13                   | 28" [711]                   |                      |

\*Adjustable. Settings are approximate.

| SHIPPING WEIGHT    |             |
|--------------------|-------------|
| Domestic, lb. [kg] | 2600 [1179] |



NOTE: Dotted lines indicate optional exit conveyor direction.



## A Complete Range of Separating, Feeding, Ironing, Folding and Sorting Options

CHICAGO offers a complete line of flatwork separators, feeders, ironers and folders for a well-matched finishing package for any size installation. Chicago's performance record is unmatched in thousands of installations in commercial, hospitality, health care, textile rental, institutional and on-premise laundries all over the world. An experienced Chicago professional will be pleased to make an objective equipment recommendation based on your production, space, utility and budget requirements. Chicago offers a variety of other blanket and specialty item folding systems with or without automated

feeding to suit any piece rate or size need. Contact your local Chicago distributor or the factory sales assistance office for a no-obligation analysis of your needs.

Chicago's Customer Service department offers full technical and service support by telephone and on our website. We also offer overnight service for quick parts availability. Visit our website, [www.chidry.com](http://www.chidry.com), to learn more about our complete line of flatwork finishing systems, including video of Chicago® equipment in action.



**CHICAGO DRYER COMPANY**  
2200 North Pulaski Road  
Chicago, Illinois 60639-3737 USA

Phone • 773. 235. 4430  
Fax • 773. 235. 4439  
Web • [www.chidry.com](http://www.chidry.com)  
Email • [chicago@chidry.com](mailto:chicago@chidry.com)