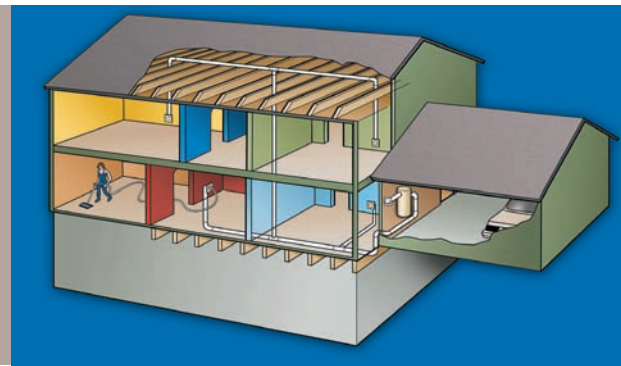




# AirVac Central Vacuum Product Selection Guide



A Linear Home Technologies Brand

800.421.1587 | www.purelypowerful.com

## Power Units

AirVac's all new central vacuum system delivers the features your customers will love.

- **Superior Cleaning** - high-efficiency, two-stage filtration
- **High Performance** - high air watt rating while maintaining low operating noise
- **Improves Indoor Air Quality** - power unit exhausts outside the living area so dust & dirt do not recirculate
- **Built-In Utility Port** - vacuum hose can plug directly into power unit for local cleaning within 30 feet of canister



### EXTRA EASY - Red Series

- Power control switch and power indicator are easy to see and easy to use
- **BAGLESS** - debris bucket, no bag to replace
- Five year warranty



### EXTRA SMART - Platinum Series

- Four-color segmented display shows bag debris level, two-color status indicator shows power and motor life
- **BAGGED** - slide-gate collar disposable bag, seals in debris during bag replacement
- Ten year warranty

## AirVac Power Unit Selector Guide & Performance Specifications

Model	Motor Type	Water Lift (in H2O)	Air Flow (CFM)	Air Watts (peak)	Filtration	Waste Capacity	Home Sq. Ft. (up to)
AVR3000	2-stage, 120V	123	118	537	to .1 micron	6 gal	3,000
AVR7500	2-stage, 120V	131	118	551	to .1 micron	6 gal	7,500
AVR12000	2-stage, 120V	127	122	570	to .1 micron	6 gal	12,000
AVR24000	2-stage, 240V	137	124	627	to .1 micron	6 gal	12,000
AVP3000	2-stage, 120V	123	118	537	to .1 micron	5.2 gal	3,000
AVP7500	2-stage, 120V	131	118	551	to .1 micron	5.2 gal	7,500
AVP12000	2-stage, 120V	127	122	570	to .1 micron	5.2 gal	12,000
AVP24000	2-stage, 240V	137	124	627	to .1 micron	5.2 gal	12,000

AirVac Red and Platinum Series Power Unit Dimensions: 40" High, 14" Diameter. Weight: 38 lbs. All units can be exhausted to the outdoors. All units are cETLus listed. Shipping containers meet or exceed all ISTA packaging standards. CFM is measured at 2" open orifice, water lift is at sealed condition.

## Tool Kits and Accessory Packages

### VM4200DS Deluxe SuperSystem Packages

The ultimate accessory package.

- Deluxe direct-connect 30-foot crush-proof high/low voltage swivel hose with three-position switch (V610PS), use with VMVP valve
- Deluxe 14", self-adjusting electric carpet brush with headlight (VM458)
- Deluxe horsehair tools
- VMTC telescopic vacuum accessory wand with cord management
- VMTE telescopic vacuum accessory wand
- Hose rack and cloth caddy bag for tools



### VM2200DS Standard Electric Packages

Standard electric system with separate electric cord.

- 30-foot high/low-voltage crush-proof swivel hose with 3-position switch (V510PS), 6-foot 120-volt line cord
- Deluxe 14", self-adjusting electric carpet brush with headlight (VM458)
- Deluxe horsehair tools
- VMTC telescopic vacuum accessory wand with cord management
- VMTE telescopic vacuum accessory wand
- Hose rack and cloth caddy bag for tools



### VM1200S Air-DrivenTurbo System Packages

Non-electric system provides maximum economy.

- 30-foot low-voltage crush-proof swivel hose with on/off switch (V400S)
- Air-driven 12" turbo carpet brush (VM179B)
- Deluxe horsehair tools
- VMTE telescopic vacuum accessory wand
- Hose rack and cloth caddy bag for tools



### VMTKD Deluxe Tool Kit

Featuring high-quality horsehair bristles and premium black finish. Stylish cloth caddy organizes and stores components.

- Adjustable carpet/floor tool
- Crevice tool
- Upholstery tool with brush
- VMTE - Telescopic vacuum accessory wand
- Dusting brush
- Floor/wall tool
- Hose rack and cloth caddy bag for tools
- On-board tool caddy



### VMGAR Deluxe Garage/Car Tool Kit

Keep the garages and vehicles clean. Comes with it's own hose and tools so indoor accessories don't get dirty. Tools feature horsehair bristles and black finish.

- 30-foot crushproof hose and hose rack
- Floor/wall tool
- Dusting brush
- Crevice tool
- Upholstery tool with brush
- VMTEP Plastic Telescopic Vacuum Wand
- On-board tool caddy



## ASTM Rated Pipe and Fittings

 VM101-8 PVC PLASTIC PIPE Standard 2" OD White 8 ft. length, 64-feet per bundle of 8	 VM102-175 Coupling	 VM103-75 90° Sweep	 VM104-90 90° Short	 VM105-50 90° 3-Way Sweep Tee
 VM106-55 90° Sweep Tee	 VM107-130 90° Flanged Wall	 VM108-75 90° Flanged Thin Wall	 VM111-90 90° Flanged Wall Tee	 VM112-80 45° Short
 VM113-80 45° Short Spigot	 VM114-60 45° Wye	 VM115-50 90° Sweep Spigot	 VM117-90 Flanged Adapter	 VM119-25 Face Plate Extension
 VM136-25 Exhaust Vent Cap (with louvered grille)	 VM137-60 Pipe Cap	 VM138-100 Pipe Collar	 VM142-10 Metal Wall Inlet Valve Bracket (Retrofit)	 VM143-10 Wall Inlet Valve Bracket
 VM147-300 Pipe Strap with Wire Trap	 VM149-10 Metal Wall Inlet Valve Bracket	 VM195 Standard Wall Inlet	 VML195 Lighted Wall Inlet	 VM196-75 Valve Bracket Plaster Guard
 VM207-75 30° Short	 VM241-15 Metal Wall Inlet Valve Bracket	 VM495 Wall Inlet Valve Trim Ring	 VMVP Polarized High-Voltage Valve (White and Ivory) VM612 - Rough-in with 6-foot high-voltage Pigtail for Wiring to the Nearest Junction Box	

### VMSP Automatic Dust Pans

- Sweep dirt directly in and system whisks it away!
- Ideal for dry-spill areas such as kitchens, workshops, etc.

VPANW - Flush mount.

VPANTP - Trim-plate.  
Each available in black, white and almond.

