



Access



Video



Software



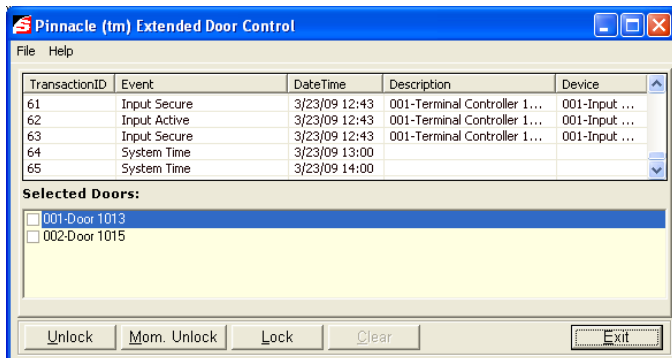
Technology



## Pinnacle™ Software Development Kit (SDK)

Comprehensive SDK for Cardholder and Real-time Event Communications

### A software development kit with library calls for developing standalone applications

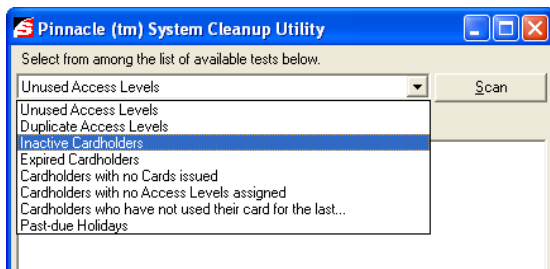


#### Pinnacle™ SDK

The Pinnacle series includes an optional licensed Software Development Kit (SDK) for use in building real-time, standalone applications and front-end controls. The libraries support calls for use by qualified programmers in building utilities for cardholder and real-time event communications.<sup>1</sup>

#### Library calls to create your own GUI:

- Cardholders / Cards
- Filters / Filter Assignments
- User Actions
- Holidays
- APB Zones
- Access Levels
- Groups (device lists)
- Time Zones
- Custom Fields
- Scheduling



Sample Pinnacle Utility Scan for unused/unnecessary items

#### Examples of interfaces that could be built with the SDK -

- Add, modify, delete cardholders interacting with HR and databases
- Interface between physical and logical security rules
- Time and attendance 3rd party interfacing
- Visitor management interfacing
- HR and Active Directory database interfacing (and LDAP solutions)
- Creating your own cardholder enrollment screen
- Incorporating a directory path as a custom field in pointing to stored \*.wav file or video clip

#### Implementing existing GUI based controls in your own application:

The Event Grid is designed to manage transactions (non-alarm events) and alarms (tracked events). An Event Grid ActiveX control is available for use in developing SDK based utilities.

#### Examples incorporating available GUI based controls -

- Activating a camera when a cardholder is at a door
- People counting
- Building management metrics based on traffic flow

<sup>1</sup> Qualified programmers for the use of the Pinnacle SDK are defined as ones with standard skills in C++/MFC, Microsoft® Visual Basic® v6.0, Component Object Model (COM), and ActiveX Controls in a Windows® environment.



# Pinnacle™ Software Development Kit (SDK)

Used by the Pinnacle team in developing a growing portfolio of utilities:

	Lite	Standard	Plus	Professional
Software Development Kit (SDK) with signed license	N/A	Optional	Optional	Optional

Part #	Description
7145944	SDK licensing for qualified programmers; includes 3 hrs of phone support
7731426	SDK support charge per hour

## SDK Use In Developing Your Own Application

In general, there is a basic two-step process in writing an application:

### STEP 1:

**Create a new login to Pinnacle** [Reference the “Security Model” of the SDK Manual for more information]

First, reference the following libraries:

**CKPUserLib.DLL** – Sielox User ActiveX Business Component

**AMTCommon.DLL** – AMTCommon 1.0 Type Library

Next, add the required classes and modules to the project (found on the Pinnacle CD in the directory labeled VB Modules)

**clsBlowFish.cls**

**clsSDKPrivateKey.cls**

**modAMTError.bas**

Basically, every new object is required to be:

1. Initialized and created
2. Started
3. Manipulated as desired
4. Shut down

### STEP 2:

**Populate Database** [Reference the “Business Component” Model of the SDK Manual for more information]

**CKPCardholderLib.DLL** – Sielox Cardholder ActiveX Business Component

**CKPCustomFieldLib.DLL** – Sielox Custom Field ActiveX Business Component

**CKPGuiCommonLib.DLL** – Sielox GUI Common ActiveX Business Component Documented in Section II

### Note: Not for SDK development use -

- Changes to existing GUI screens
- Creating users or changing permissions
- Custom event / array set-ups

## Sielox Also Offers a Growing Library of Standalone Application Utilities Built With Pinnacle’s SDK

**EventLink:** Cardholder’s image displayed with a corresponding reader event

**Administration Management:** Scan for unused/unnecessary items

**Door Icon and Extended Door Control:** Unlock, lock or temporarily unlock selected doors

**Event Counter:** Increment and decrement a counter based on user-defined events

**First Person Rule / Occupancy Restrictions:** Set occupancy rules based on count, time, and cardholder use

**Independent Report Processor:** Execute reports for pre-configured templates and formulas

**Email Report Scheduler:** Schedule report generation with direct emailing

170 East Ninth Avenue, Runnemede, NJ 08078 | 856-939-9300 | Toll free: 800-424-2126 | Fax: 856-939-9309 | info@sielox.com

[www.sielox.com](http://www.sielox.com)

© 2009 – Sielox, LLC. Sielox and Pinnacle are trademarks Sielox, LLC. GO-Global is a trademark of GraphOn Corporation. Certain product names mentioned herein may be trade names and/or registered trademarks of other companies. Sielox reserves the right to change product specifications.