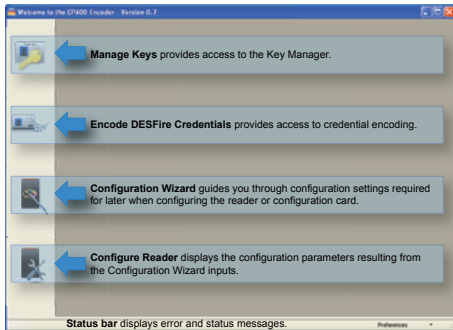




CP600 MIFARE® DESFire® EV1 Programmer



CP600 MIFARE® DESFire® EV1 Programmer

- **Generate and Manage Keys** - Allows end users to securely generate and use custom keys
- **Generate Reader Configuration** - Provides the facility to manage iCLASS® migration reader behavior based on custom configurations
- **Program Credentials** - Enables straightforward management of enrolling credentials in accordance with existing key management and numbering schemes
- **Configuration and Setup Wizard** - Reduces complexity of managing reader and credential configuration

The CP600 Programmer is designed for on-site programming of access control and user data onto MIFARE® DESFire® EV1 Credentials for use with iCLASS® migration readers.

It allows programming of contactless smart cards with access control data formats and user data fields. This feature enables system administrators to stock blank cards and program them on-demand utilising custom configuration or user keys. This enables new cardholders to be easily and conveniently added to existing systems.

Each Programmer includes a customer-specific license and a dedicated SAM to protect against misuse. This provides a secure and user-friendly environment to manage custom keys, reader configuration and program access control credentials.

For ease of use, the CP600 Programmer includes everything a customer will need to manage the system: a USB desktop programmer, reader configuration cards, sample credentials and a software wizard to allow straightforward management of these complex tasks.

FEATURES:

- Key Manager – Define cryptographic keys used for authenticating MIFARE® Classic and MIFARE DESFire® EV1 credentials
- MIFARE DESFire EV1 Programmer – Encode a single application and file with up to 5 data fields to a MIFARE DESFire EV1 credential or a batch of credentials
- Reader Configuration Wizard – Define reader configuration profiles that enable the iCLASS® migration reader to read MIFARE Classic and MIFARE DESFire EV1 credentials as well as create configuration cards or configure iCLASS migration readers via a serial interface
- To ensure security, all operations related to reader configuration or credential encoding are protected using a dedicated SAM within the CP600 Programmer Kit. Without this smart card, the customer specific license file or knowledge of the password for the card, the CP600 Programmer will not function.

EACH PROGRAMMER INCLUDES:

- OMNIKEY® 5321 Desktop Reader
- USB cable or a direct reader connection
- USB flash drive (includes all needed documentation)
- 1 Secure Access Module (SAM)
- 10 reader configuration cards
- MIFARE DESFire EV1 cards
- Quick start guide



SPECIFICATIONS

Base Part Number	3155
PROGRAMMER SPECIFICATIONS	
Dimensions	3.78" x 3.07" x .031" (115 x 96.5 x 25.5 mm)
Weight	Approx. 5.64 oz / 160 g
Power Supply	Bus powered
Operating Temperature	32°-131° F (0° - 55° C)
Operating Humidity	10-90% Relative Humidity
HOST INTERFACE	
Host Interface	USB 2.0 CCID (also compliant with USB 1.1)
Transmission Speed	12 Mbps (USB 2.0 full speed)
CARD COMPATIBILITY	
Encode Cards	MIFARE DESFire EV1 2K, 4K and 8K Cards
Read Cards	MIFARE DESFire EV1, MIFARE DESFire 0.6, MIFARE Classic
Configuration Cards	JCOP 128K – Pre-configured with HID custom reader configuration applet.
SYSTEM REQUIREMENTS	
Operating System	Windows® XP, Vista® and Windows® 7
Software Environment	Latest Operating System Service Pack Framework is provided with the CP600 software installation
CERTIFICATIONS	
Safety/Environmental	CE, FCC, UL, RoHS, WEEE
Warranty	Two year manufacturer's warranty

ASSA ABLOY

An ASSA ABLOY Group brand

© 2012 HID Global Corporation. All rights reserved. HID, the HID logo, OMNIKEY and iCLASS are trademarks or registered trademarks of HID Global in the U.S. and/or other countries. All other trademarks, service marks, and product or service names are trademarks or registered trademarks of their respective owners.
20120405-hid-cp600-prog-ds-en

North America: +1 949 732 2000
Toll Free: 1 800 237 7769
Europe, Middle East, Africa: +49 6123 791 0
Asia Pacific: +852 3160 9800
Latin America: +52 (55) 5081-1650