



Access

Video

Software

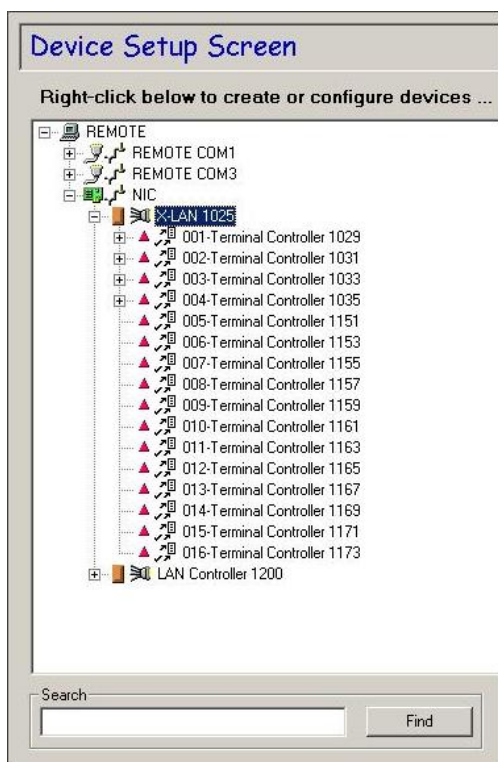
Technology



X-LAN

Simplify your network installation

The X-LAN delivers a powerful, compact and cost effective off-the-shelf Ethernet networking solution



The X-LAN is an Ethernet to RS-485 converter that bridges the gap between two industry standard networks.

Cost Effective

The X-LAN is an ideal solution for installations with existing Ethernet Network infrastructure. It reduces installation costs and eliminates the use of extra devices.

Device Discovery

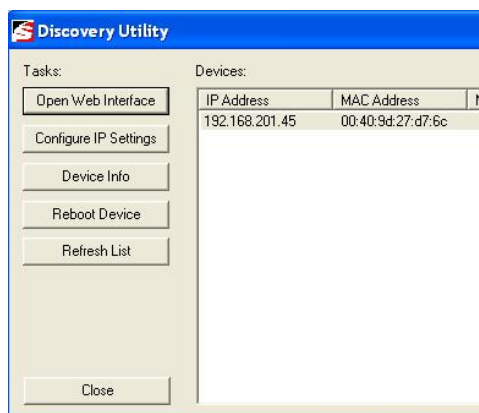
Plug in all of the X-LAN devices to the Ethernet and automatically discover them from Pinnacle LANLink™ Controller Properties.

No Main Controller Required

The X-LAN does not require a Main Controller and allows up to 16 Terminal Controllers per Ethernet connection.

Compatibility

X-LAN is compatible with Pinnacle 6.x or later and works with AC-1500 and AC-1200 Sielox Controllers.



Product Specifications

LEDs

Network Link (Green)
Activity (Yellow)
Power (Red)

Power Requirements

9-30 VDC @ 370mA
Power Supply Included

Hardware

32-bit NET+ARM high-performance RISC processor
RS-232/422/485 serial interface (DB-9M connector)
Auto-sensing 10/100 Mbit Ethernet interface

Environmental

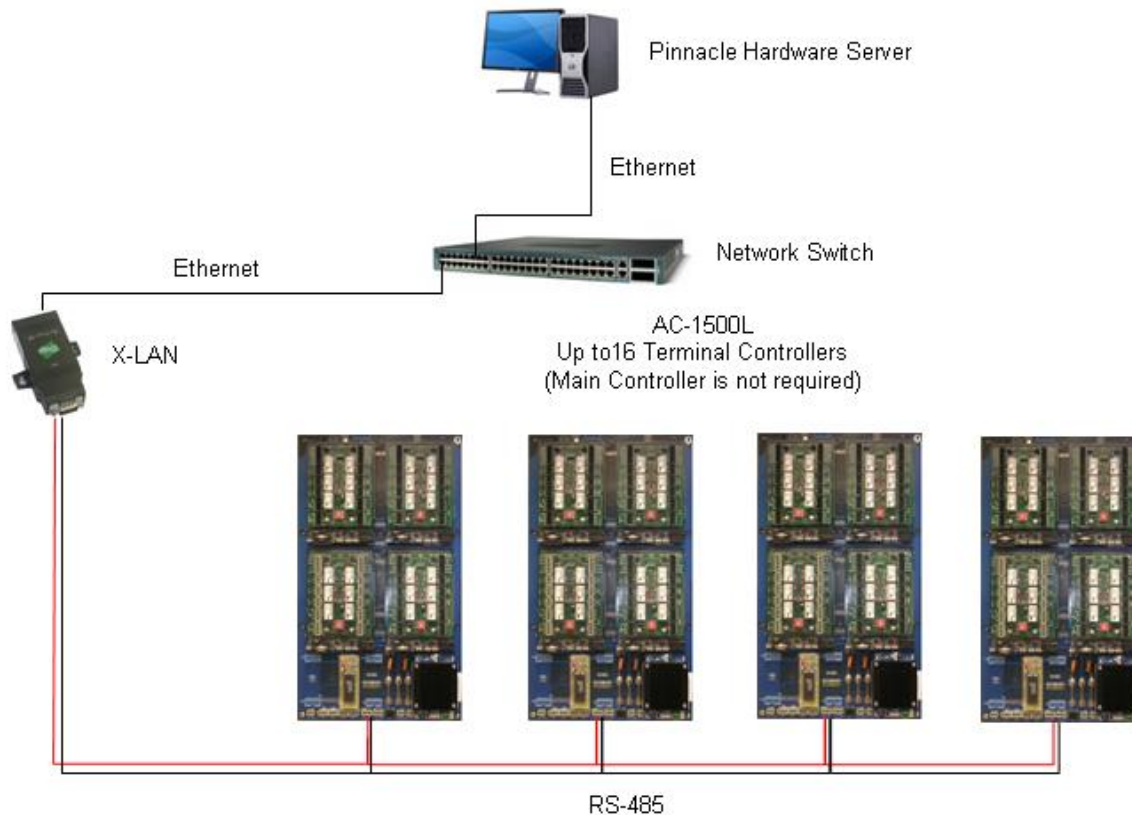
Storage temperature: -40° C to 90° C (-40° F to 194° F)
Operating temperature: 0° C to 60° C (32° F to 140° F)
Relative humidity: 5% to 90% (non-condensing)

Regulatory Approvals

FCC part 15

Dimensions

Length: 3.876 in (9.846 cm)
Width: 1.680 in (4.267 cm)
Depth: 0.999 in (2.537 cm)
Weight: 2.29 oz (6.50 g)



170 East Ninth Avenue, Runnemede, NJ 08078 | 856-939-9300 | Toll free: 800-424-2126 | Fax: 856-939-9309 | info@sielox.com

www.sielox.com

© 2009 – Sielox, LLC. Sielox and Pinnacle are trademarks Sielox, LLC. GO-Global is a trademark of GraphOn Corporation. Certain product names mentioned herein may be trade names and/or registered trademarks of other companies. Sielox reserves the right to change product specifications.