



- Designed to Meet IP68 and NEMA 6P Ratings
- Uses Military Standard MIL-C-26482 Connectors
- Range of Housing Diameters Accommodate Many Camera/ Lens Combinations
- Pressure Sensor Option Available on All Models

Pressurized Housings

The Aigis Pressurized Housing Series can accommodate a wide range of camera and lens combinations by offering multiple housing diameters. All housings are pressurizeable using standard Schrader valves and over-pressure relief valves. The housing series is designed to meet IP68 and NEMA-6P standards. A Military Standard connector is used at the rear of the housings to handle cable entry into the units. Optional accessories include sunshields, mounts, tamper switches, and pressure sensors.

Model Number	Internal Enclosure Diameter	Input Voltage	Internal Transformer	Standard Connector Size*	Contact Wire Gauge**	Nominal Power***	Housing Construction	Sunshield
HS9383S-P	3.5-inch	Any	n/a	14-19	20-24 AWG	n/a	Stainless Steel	Optional
HS9383S-2HP	3.5-inch	24 VAC± 10%	n/a	14-19	20-24 AWG	10W	Stainless Steel	Optional
HS9383S-6HP	3.5-inch	115 VAC± 10%	24 VAC	14-19	20-24 AWG	10W	Stainless Steel	Optional
HS9384-2HP	3.5-inch	24 VAC± 10%	n/a	20-16	16-20 AWG	10W	Aluminum	Optional
HS9384-6HP	3.5-inch	115 VAC± 10%	24 VAC	20-16	16-20 AWG	10W	Aluminum	Optional
HS9392-2HP	4.5-inch	24 VAC ±10%	n/a	20-16	16-20 AWG	50W	Aluminum	Standard
HS9392-6HP	4.5-inch	115 VAC± 10%	n/a	20-16	16-20 AWG	50W	Aluminum	Standard
HS9396-2HP	7.5-inch	24 VAC± 10%	n/a	20-16	16-20 AWG	50W	Aluminum	Standard
HS9396-6HP	7.5-inch	115 VAC± 10%	n/a	20-16	16-20 AWG	50W	Aluminum	Standard

* Numbers listed before and after the dash are 'connector shell size' and 'number of contacts' respectively. Connector used is MIL-C-26482 type connector. Ships with mating connector and crimp pins. Additional sizes and pin arrangements available on request.

** Max operating AC voltage at sea level: 1,000 VAC (16-pin connectors, Service rating II) and 600VAC (19-pin connectors, Service rating I)

*** Wattage listed indicates heater requirement only; does not include camera, lens or other accessories.

CUSTOM OPTIONS

TS: Tamper Switch opens or closes a contact when camera cradle is removed from enclosure.

PS: Pressure Sensor to alert user to a predetermined change in pressure level.

EH: Extended Heater Range

IP: Network Wiring Configuration includes pre-wired internal RJ-45 to accommodate Cat5e/Cat6 cable.

SPECIFICATIONS STAINLESS STEEL HS9383S PRESSURIZED

Construction: 304 Grade Stainless Steel. External cable connector cover threaded for 1-inch conduit connection.

Window: 0.118 in (3 mm) thick glass, thermostatically-controlled heater/defogger (Polycarbonate window optional)

Camera Mounting: Removable cradle assembly with hole pattern for mounting camera/lens assembly. Cradle may be rotated through 360°.

Weights: Non-transformer housing without mount 7.3 lb (3.3 kg) Transformer housing without mount 8.5 lb (3.9 kg)

Dimensions: See Dimensional Outlines.

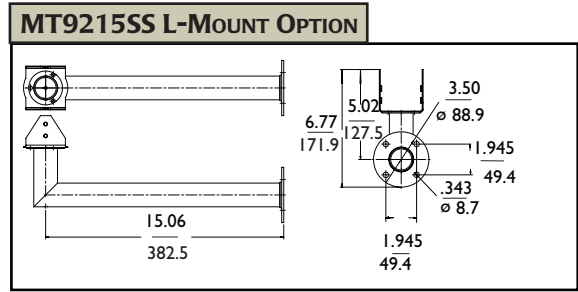
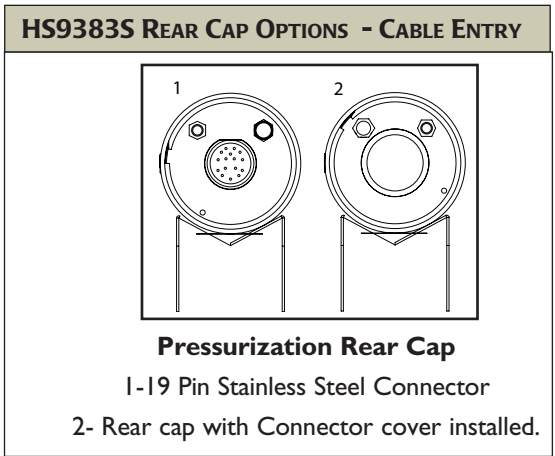
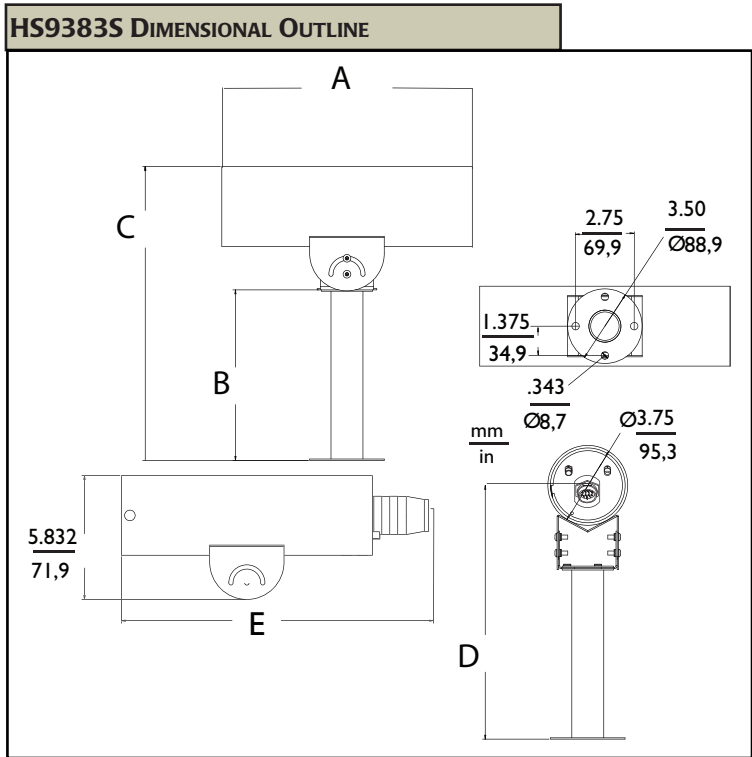
ENVIRONMENTAL

Temperature: (heater versions)
At external ambient temperatures of -40°F to 122°F (-40°C to 50°C), maintains internal temperatures between -4°F to 131°F (-20°C to 55°C).

Salt Atmosphere: Designed to meet or exceed, MIL-STD-810E, Method 509, Procedure I.

Enclosure Protection: Designed to meet IP68 & NEMA-6P.

Safety: Designed to meet UL2044



ENCLOSURE DIMENSIONS		HS9383S-P HS9383S-2HP	HS9383S-5HP HS9383S-6HP
A	Length	11.82 in / 300.2 mm	14.82 in / 376.4 mm
E	Length With Connector	14.72 in / 373.9 mm	17.72 in / 450.1 mm
MOUNT DIMENSIONS		MT9208SS	MT9212SS
B	Mount Height	8.06 in / 204.7 mm	12.06 in / 306.3 mm
C	Overall Mounted Height	13.85 in / 351.8 mm	17.85 in / 453.3 mm
D	Overall Height to center of entry	11.97 in / 304 mm	15.97 in / 405.6 mm

SPECIFICATIONS ALUMINUM HS9384 PRESSURIZED

Construction:

Extruded aluminum cylinder, aluminum rear-end cap, aluminum front cap with glass faceplate, and aluminum cradle.

Window:

0.118 in (3 mm) thick glass. Includes thermostatically-controlled window heater/defogger.

Housing Mounting:

Three (3) 1/4-20 tapped holes.

Camera Mounting:

Removable cradle assembly with hole pattern for mounting camera/lens assembly. Cradle may be rotated through 360°.

Finish: Light gray powder coat.

Dimensions: See Dimensional Outlines.

Weights:

Non-Transformer: 4.4 lb (2.0 kg).

Transformer: 5.7 lb (2.6 kg).

ELECTROMAGNETIC COMPATIBILITY

EMC Requirements:

Immunity: 89/336/EEC, EN50082-1.

Emission: 89/336/EEC, EN50081-1 Class B.

Safety:

CE: LVD Requirements: 73/23/EEC; EN60065.

UL: UL2044.

cUL: CSA 22.2, No.1.

ENVIRONMENTAL

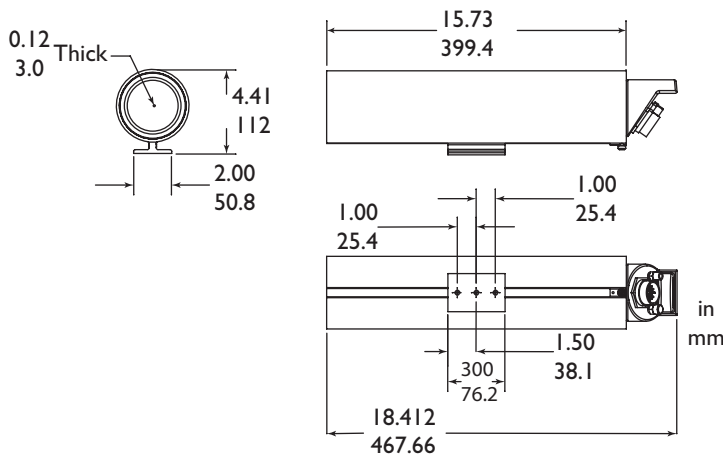
Temperature: (heater versions)

At external ambient temperatures of -40°F to 122°F (-40°C to 50°C), maintains internal temperatures between -4°F to 131°F (-20°C to 55°C).

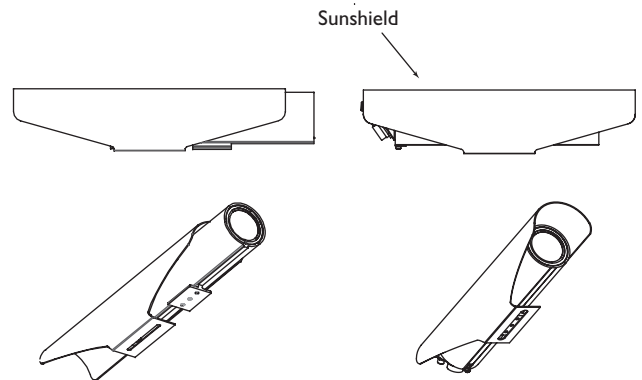
Salt Atmosphere: Designed to meet or exceed, MIL-STD-810E, Method 509, Procedure I.

Enclosure Protection: Designed to meet IP68 & NEMA-6P.

HS9384 DIMENSIONAL OUTLINE



HS9384 SUNSHIELD



RECOMMENDED MOUNTS & ACCESSORIES

HS9384	MT9212 - Wall mount, 12-inch
	MT9210 - Column mount, 8-inch
	MT9223 - Column mount, 24-inch
	HS9384SS - Sunshield

SPECIFICATIONS ALUMINUM HS9392 & HS9396 PRESSURIZED

MECHANICAL

Construction: Extruded aluminum cover, fabricated aluminum frame, strengthened glass window.

Window:

HS9392: 0.12-inch (3mm) strengthened glass, optical quality x 3.8-inch diameter (96mm).

HS9396: 0.16-inch (4mm) strengthened glass, optical quality x 4.8-inch diameter (122mm).

Housing Mounting: Three 0.28-inch diameter (6.4mm) clearance holes in base.

Camera Mounting: Slotted internal rail assembly which may be rotated through 360°. All camera/lens mounting hardware is provided.

Finish: Light gray powder coat.

Dimensions: See Dimensional Outlines.

Weight:

HS9392 - Housing 6.2 lbs (2.8 kg)
Sunshield 3.2 lbs (1.5 kg)

HS9396 - Housing 8.2 lbs (3.7kg)
Sunshield 4.0 lbs (1.8 kg)

ENVIRONMENTAL

ITSA Transportation Test: Designed to meet ITSA requirements

Salt Atmosphere: MIL-STD-810E, Method 509, Procedure I.

Enclosure Protection: Designed to NEMA-6P, IP68

Safety: CE: Designed to comply with EN60065 UL/cUL: Designed to comply with CCTV Appliance Code UL2044

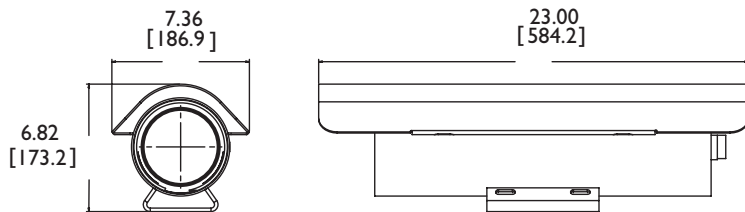
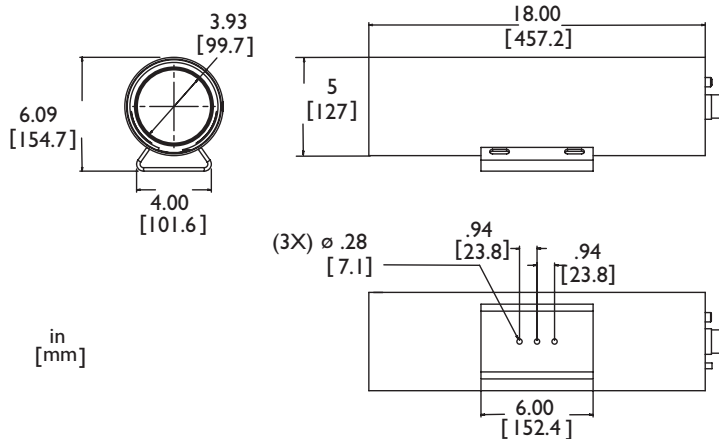
Temperature: At external ambient temperatures of -22°F to 122°F (-30°C to 50°C), maintains internal temperatures between -4°F to 131°F (-20°C to 55°C).

Recommended Mounts - Other options available see the Heavy Duty Mount Datasheet.

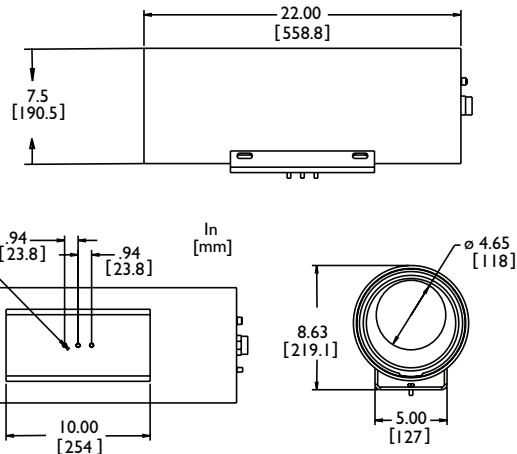
MT9234 Wall Mount - Heavy Duty 16-inch wall bracket with adjustable head bracket.

MT9235 Wall Mount - Heavy Duty 22-inch wall bracket with extra large adjustable head bracket.

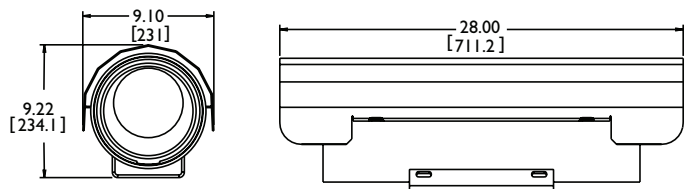
HS9392 DIMENSIONAL OUTLINES



HS9396 DIMENSIONAL OUTLINES



HS9396 shown here with Sunshield



1950 Camino Vida Roble, Suite 150
Carlsbad, CA 92008
Tel: 760.438.7000 800.421.1587
www.aigismech.com • www.linearcorp.com