

COMMERCIAL PRODUCTS CATALOG

Medical Gas Ball Valves - Outside the Zone Box

DESIGN: "F1", "F3", & "G3" CONFIGURATIONS

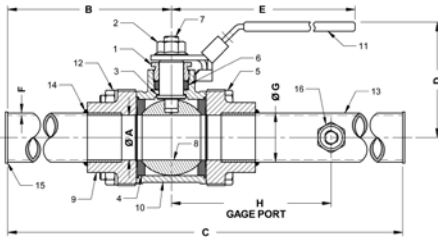
- Cast Bronze Valve Body & Valve End Caps
- RPTFE Seats and Stuffing Box Ring
- 600 psig CWP Non-Shock (3" & 4" 400 CWP)
- Vacuum Service to 29 inches Hg
- Full Port in All Sizes
- Blow-Out-Proof Stem Design
- Adjustable Packing Nut
- In-Line Repairable
- Locking Handle
- Cleaned for Oxygen Service per CGA G4.1 & NFPA 99
- Factory Brazed, Male Extensions for Solder or Brazed Installation without Disassembly (Type K copper tubing brazed into both end caps)

OUTSIDE THE ZONE BOX

NFPA 99 requires the valves to be secured in the open position. For medical gas applications that are Outside-the-Zone-Box, Apollo offers three standard configurations: "F1" (1 gage port), "F3" (2 gage ports), and "G3" (no gage ports).

82-200-F1 AND 82-240-F1 SERIES

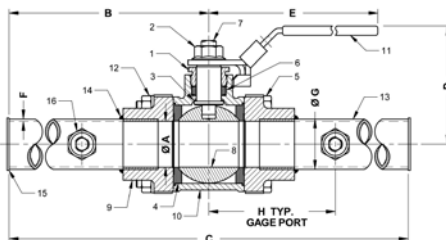
MALE EXTENSIONS AND 1 GAGE PORT



Size (in.)	82-200 Model Number	82-240 Model Number 316SS Ball & Stem	Dimensions (in.)							
			A	B	C	D	E	F	G	H
1/2	82-203-F1	82-243-F1	0.62	6.91	17.41	2.23	5.31	0.049	5/8"	7.15
3/4	82-204-F1	82-244-F1	0.81	6.97	17.47	2.41	5.31	0.065	3/4"	7.22
1	82-205-F1	82-245-F1	1.00	7.03	17.62	3.01	6.29	0.065	1-1/4"	7.28
1-1/4	82-206-F1	82-246-F1	1.25	7.38	22.71	3.22	6.29	0.065	1-3/8"	7.00
1-1/2	82-207-F1	82-247-F1	1.50	7.50	22.57	4.04	8.93	0.072	1-5/8"	6.74
2	82-208-F1	82-248-F1	2.00	7.74	22.58	4.15	8.93	0.083	2-1/8"	6.51
2-1/2	82-209-F1	82-249-F1	2.50	11.75	23.50	5.31	10.06	0.095	2-1/2"	6.38

82-200-F3 AND 82-240-F3 SERIES

MALE EXTENSIONS AND 2 GAGE PORTS



Size (in.)	82-200 Model Number	82-240 Model Number 316SS Ball & Stem	Dimensions (in.)							
			A	B	C	D	E	F	G	H
1/2	82-203-F3	82-243-F3	0.62	12.27	24.53	2.23	5.31	0.049	5/8"	4.25
3/4	82-204-F3	82-244-F3	0.81	12.25	24.50	2.41	5.31	0.065	3/4"	4.24
1	82-205-F3	82-245-F3	1.00	12.30	24.60	3.01	6.29	0.065	1-1/4"	4.24
1-1/4	82-206-F3	82-246-F3	1.25	12.23	24.46	3.22	6.29	0.065	1-3/8"	4.23
1-1/2	82-207-F3	82-247-F3	1.50	12.25	24.50	4.04	8.93	0.072	1-5/8"	4.25
2	82-208-F3	82-248-F3	2.00	12.25	24.50	4.15	8.93	0.083	2-1/8"	4.25
2-1/2	82-209-F3	82-249-F3	2.50	11.75	23.50	5.31	10.06	0.095	2-1/2"	6.38