

AD-210 Models

AD-210 Non Tilt			
MAXIMUM CAPACITY (DRY WEIGHT)	200 lb	90.72 kg	
TUMBLER DIAMETER	62-1/2"	158.75 cm	
TUMBLER DEPTH	42"	106.7 cm	
TUMBLER VOLUME	74.5 cu ft	2,109.60 L	
TUMBLER/DRIVE MOTOR	3 hp	2.24 kW	
DOOR OPENING *	36-3/4" w x 43" h	93.3 cm x 109.2 cm	
DOOR SILLHEIGHT - LEVEL	36-1/2"	94.6 cm	
COMPRESSED AIR VOLUME	3.25 cfm	0.25 cmh	
COMPRESSED AIR CONNECTION **	3/4" F.N.P.T.		
EXHAUST CONNECTION (DIAMETER)	20"	50.8 cm	
WATER CONNECTION ***	3/4" F.N.P.T.		
GAS	VOLTAGE AVAILABLE	208-575v 3ø 3,4w	50/60 Hz
	BLOWER / FAN MOTOR (REAR / SIDE EXHAUST)	7-1/2 hp / 15 hp	5.6 kW / 11.2 kW
	APPROXIMATE NET WEIGHT	3,033 lb	1,376 kg
	APPROXIMATE SHIPPING WEIGHT	3,195 lb	1,449 kg
	HEAT INPUT	650,000 Btu/hr	163,810 kcal/hr
AIRFLOW	5,300 cfm	150.08 cmm	
INLET PIPE CONNECTION	1-1/2" F.N.P.T.		
STEAM	VOLTAGE AVAILABLE	208-575v 3ø 3,4w	50/60 Hz
	BLOWER / FAN MOTOR	15 hp	11.2 kW
	APPROXIMATE NET WEIGHT	3,275 lb	1,486 kg
	APPROXIMATE SHIPPING WEIGHT	3,437 lb	1,559 kg
	HEAT INPUT	650,000 Btu/hr	163,810 kcal/hr
AIRFLOW	5,300 cfm	150.08 cmm	
INLET PIPE CONNECTION	1-1/2" F.N.P.T.		
STEAM CONSUMPTION	890 lb/hr	404.5 kg/hr	
OPERATING STEAM PRESSURE	125 psi max	8.6 bar	
BOILER HORSEPOWER (NORMAL LOAD)		27 Bhp	
SUPPLY CONNECTION	2" M.N.P.T.		
RETURN CONNECTION	2" M.N.P.T.		

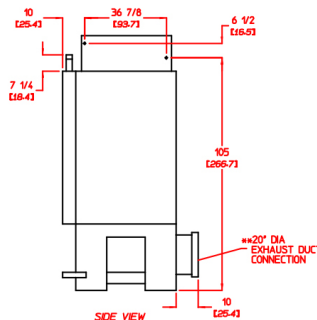
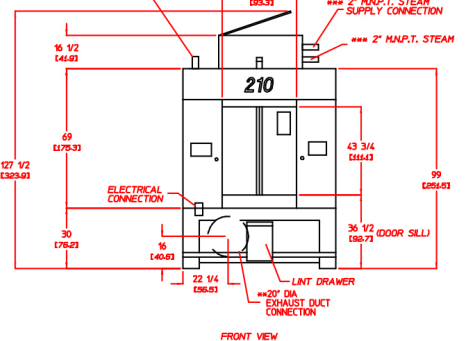
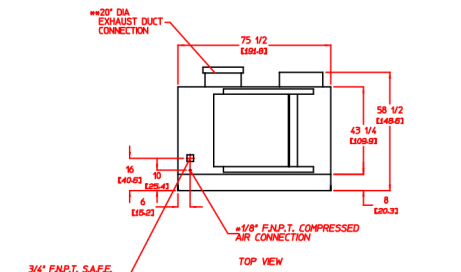
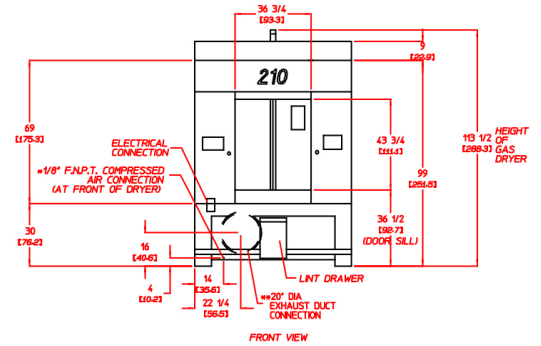
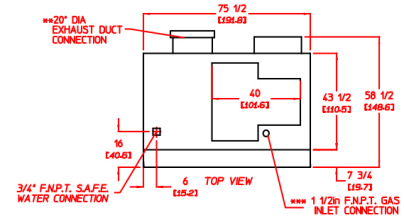
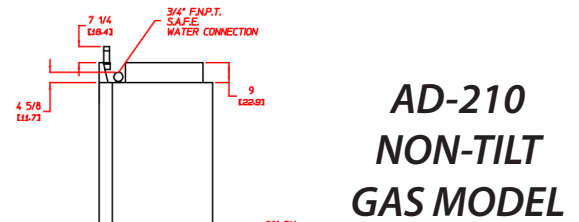
AD-210 2-Way Tilt			
MAXIMUM CAPACITY (DRY WEIGHT)	200 lb	90.72 kg	
TUMBLER DIAMETER	62-1/2"	158.75 cm	
TUMBLER DEPTH	42"	106.7 cm	
TUMBLER VOLUME	74.5 cu ft	2,109.60 L	
TUMBLER/DRIVE MOTOR	3 hp	2.24 kW	
DOOR OPENING *	36-3/4" w x 43" h	93.3 cm x 109.2 cm	
DOOR SILLHEIGHT - LEVEL	37-1/4"	94.6 cm	
COMPRESSED AIR VOLUME	9 cfm	0.25 cmh	
COMPRESSED AIR CONNECTION **	3/8" F.N.P.T.		
EXHAUST CONNECTION (DIAMETER)	20"	50.8 cm	
WATER CONNECTION ***	3/4" F.N.P.T.		
GAS	VOLTAGE AVAILABLE	208-575v 3ø 3,4w	50/60 Hz
	BLOWER / FAN MOTOR (REAR / SIDE EXHAUST)	7-1/2 hp / 15 hp	5.6 kW / 11.2 kW
	APPROXIMATE NET WEIGHT	3,370 lb	1,529 kg
	APPROXIMATE SHIPPING WEIGHT	3,670 lb	1,664 kg
	HEAT INPUT	650,000 Btu/hr	163,810 kcal/hr
AIRFLOW	5,300 cfm	150.08 cmm	
INLET PIPE CONNECTION	1-1/2" F.N.P.T.		
STEAM	VOLTAGE AVAILABLE	208-575v 3ø 3,4w	50/60 Hz
	BLOWER / FAN MOTOR	15 hp	11.2 kW
	APPROXIMATE NET WEIGHT	3,625 lb	1,644 kg
	APPROXIMATE SHIPPING WEIGHT	3,925 lb	1,780 kg
	HEAT INPUT	650,000 Btu/hr	163,810 kcal/hr
AIRFLOW	5,300 cfm	150.08 cmm	
INLET PIPE CONNECTION	1-1/2" F.N.P.T.		
STEAM CONSUMPTION	890 lb/hr	404.5 kg/hr	
OPERATING STEAM PRESSURE	125 psi max	8.6 bar	
BOILER HORSEPOWER (NORMAL LOAD)		27 Bhp	
SUPPLY CONNECTION	1-1/2" M.N.P.T.		
RETURN CONNECTION	3/4" M.N.P.T.		

Shaded areas are stated in metric equivalents

- * Dryer must be provided with clean, dry and regulated 80 psi +/- 10 psi (5.51 bar +/- 0.69 bar) air supply.
- ** Height is 43-inches (109.22 cm) maximum at the center of the door.
- *** Water supply must be 40 psi +/- 20 psi (2.75 bar +/- 1.37 bar) for fire suppression system to operate properly.

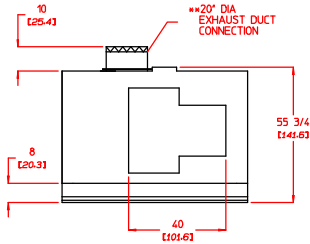
Gas Rear Exhaust - Electrical Service Specifications (Per Dryer)					
IMPORTANT: 208 VAC and 230/240 VAC are not the same. When ordering, specific voltage.					
NOTES: A. Circuit breakers are thermal/magnetic (industrial) motor curve type ONLY . For others calculate/verify correct breakers size according to appliance amp draw rating and type of breaker to be used.					
B. Circuit breakers for 3ø dryers must be 3-pole type.					
Voltage	Phase	Wire Service	Hz	Total Current	
208	3	3/4	60	37.6	
230	3	3	60	33.7	
240	3	3	60	33.7	
460	3	3	60	17.9	
480	3	3	60	17.9	
575	3	3	60	14.4	
230	3	3	50	36.2	
380	3	3/4	50	20.7	
400	3	3/4	50	19.9	
416	3	3/4	50	19.8	

Gas side exhaust and steam - Electrical Service Specifications (Per Dryer)					
IMPORTANT: 208 VAC and 230/240 VAC are not the same. When ordering, specific voltage.					
NOTES: A. Circuit breakers are thermal/magnetic (industrial) motor curve type ONLY . For others calculate/verify correct breakers size according to appliance amp draw rating and type of breaker to be used.					
B. Circuit breakers for 3ø dryers must be 3-pole type.					
Voltage	Phase	Wire Service	Hz	Total Current	
208	3	3/4	60	54.7	
230	3	3	60	50.5	
380	3	3	60	51.3	
460	3	3	60	26.4	
480	3	3	60	26.4	
575	3	3	60	21.5	
230	3	3	50	54.0	
380	3	3/4	50	32.7	
400	3	3/4	50	29.7	
416	3	3/4	50	29.1	



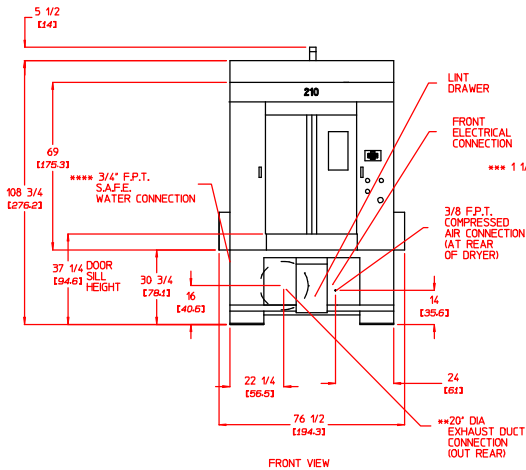
AD-210 NON-TILT STEAM MODEL



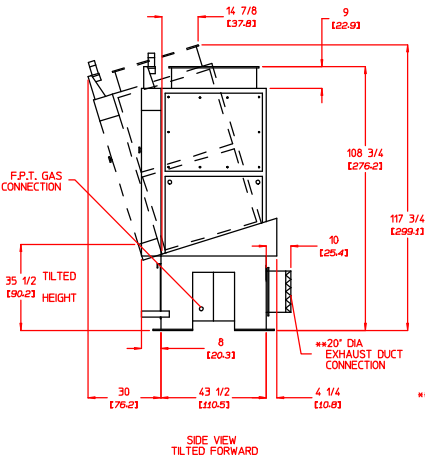


TOP VIEW

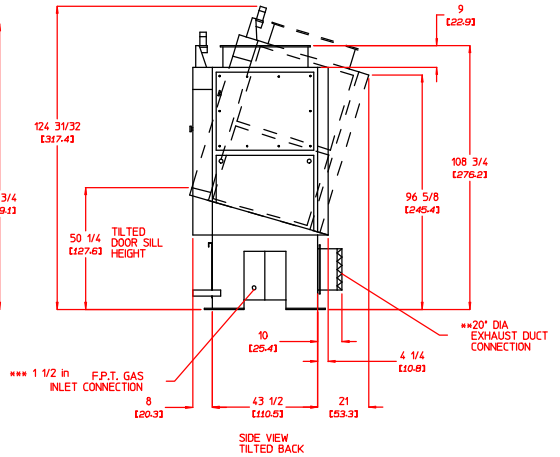
**210
1 DOOR/2-WAY TILT*
GAS MODEL**



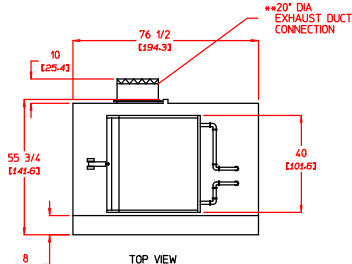
FRONT VIEW



SIDE VIEW
TILTED FORWARD



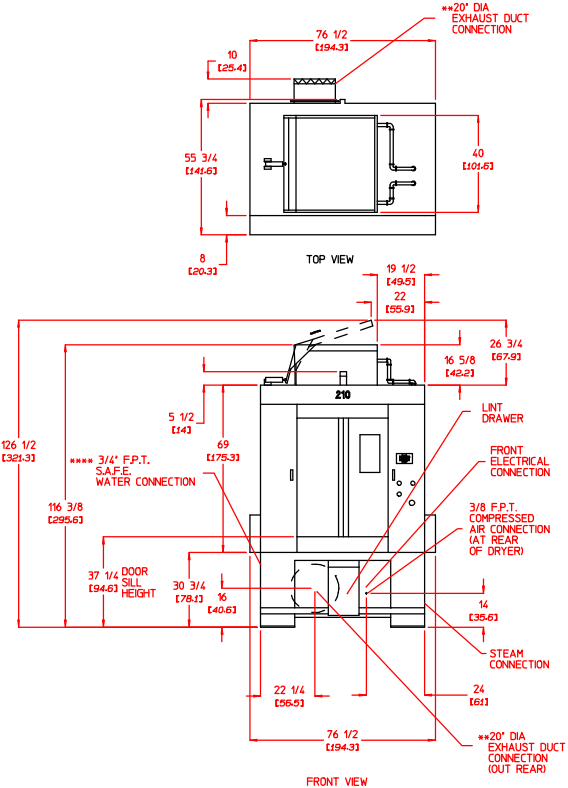
SIDE VIEW
TILTED BACK



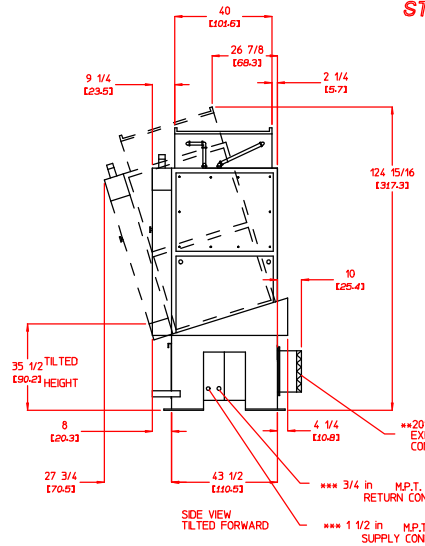
TOP VIEW

* BOTH GAS AND STEAM UNITS MUST BE SUPPLIED WITH CLEAN, DRY, REGULATED AIR AT 80 PSI ± 10 PSI (5.52 BAR ± .69 BAR).
** DUCTWORK SIZE VARIES WITH INSTALLATION CONDITIONS. EXHAUST STATIC PRESSURE SHOULD NOT EXCEED 0.3" WATER COLUMN (0.72 IN).
*** SIZE OF PIPING TO DRYER VARIES WITH INSTALLATION CONDITIONS. CONTACT FACTORY FOR ASSISTANCE.

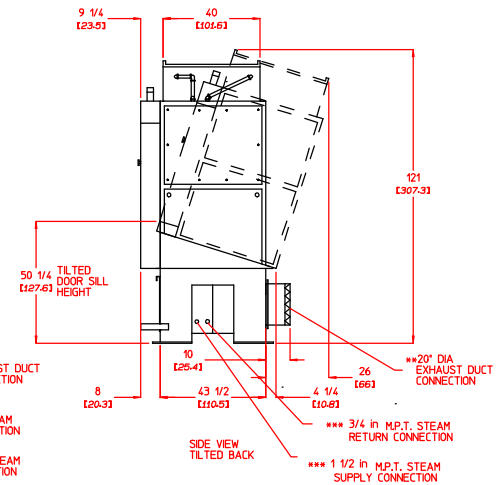
**210
1 DOOR/2-WAY TILT*
STEAM MODEL**



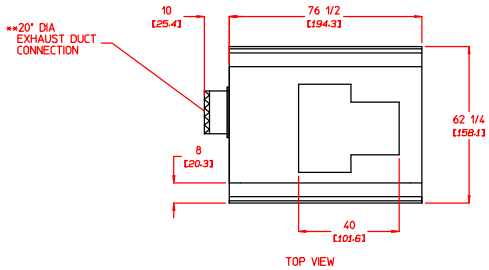
FRONT VIEW



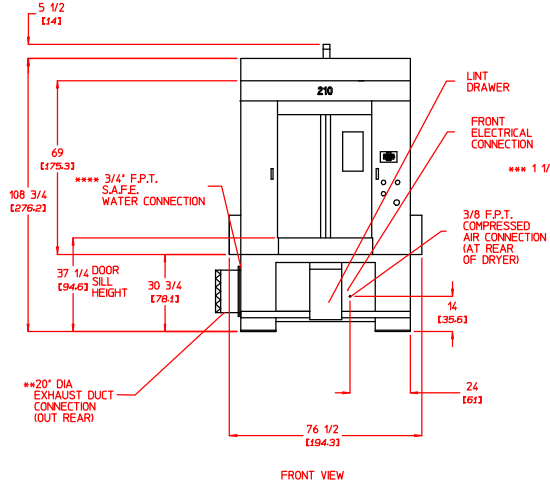
SIDE VIEW
TILTED FORWARD



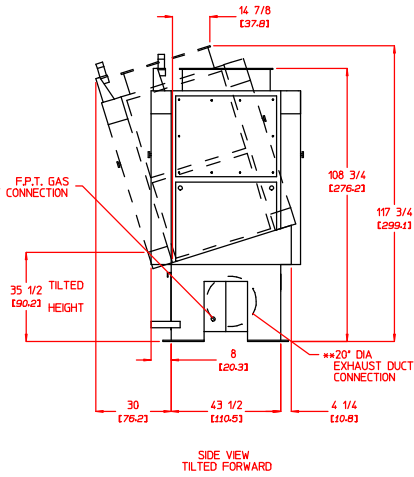
SIDE VIEW
TILTED BACK



TOP VIEW

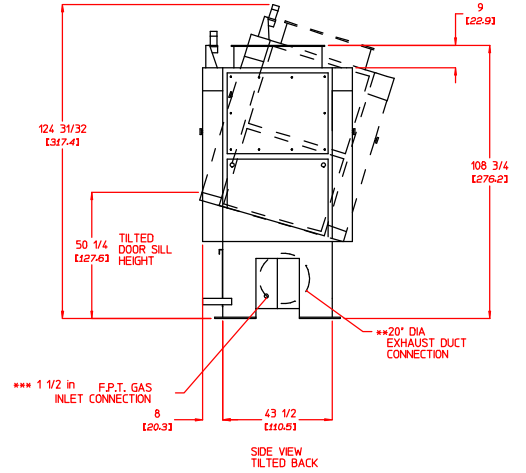


FRONT VIEW

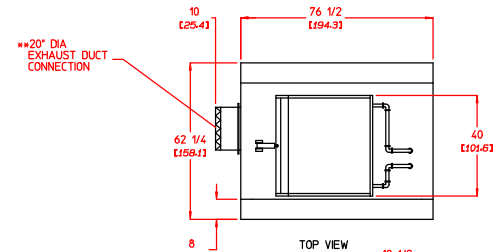


SIDE VIEW TILTED FORWARD

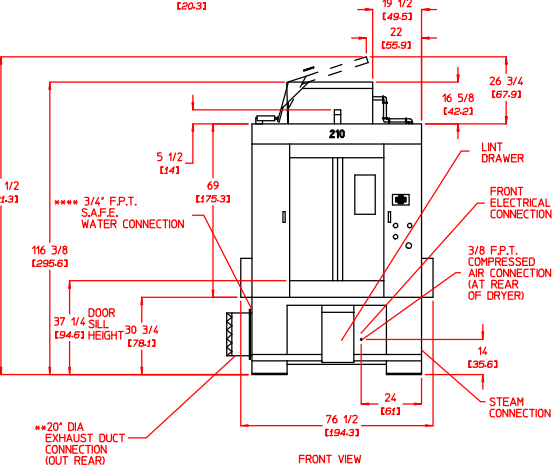
**210
2 DOOR/2-WAY TILT*
GAS MODEL**



SIDE VIEW TILTED BACK



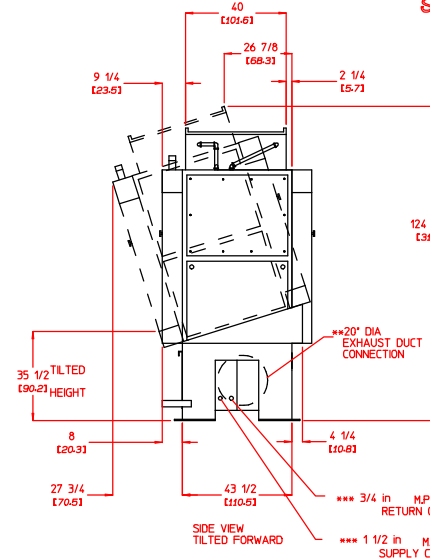
TOP VIEW



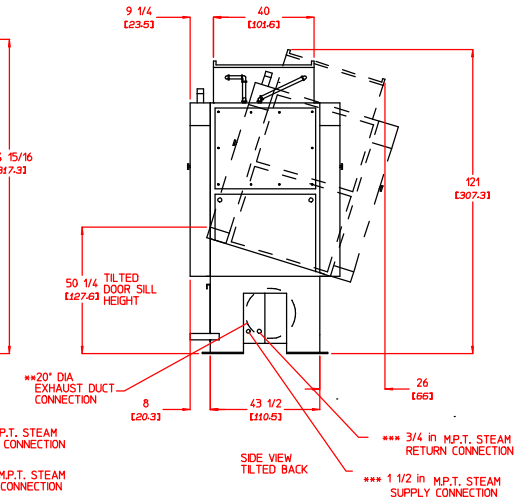
FRONT VIEW

- * BOTH GAS AND STEAM UNITS MUST BE SUPPLIED WITH CLEAN, DRY, REGULATED AIR AT 80 PSI ± 10 PSI (5.52 BAR ± .69 BAR).
- ** DUCTWORK SIZE VARIES WITH INSTALLATION CONDITIONS. EXHAUST STATIC PRESSURE SHOULD NOT EXCEED 0.3" WATER COLUMN (0.74 mb).
- *** SIZE OF PIPING TO DRYER VARIES WITH INSTALLATION CONDITIONS. CONTACT FACTORY FOR ASSISTANCE.

**210
2 DOOR/2-WAY TILT*
STEAM MODEL**



SIDE VIEW TILTED FORWARD



SIDE VIEW TILTED BACK