

C•CURE 9000 MZX Fire Detection integration

Features That Make a Difference:

- One Security Management Platform for Fire, Burglar Alarm system, Video Integration, Access Control and many more
- Utilizes BACnet, the industry-standard communications protocol for building automation and control networks
- Seamless integration of C•CURE 9000 with the Tyco MZX Range of Fire Panels
- Fire alarms are reported instantly on the C•CURE 9000 Event Monitoring station
- Easily produce status reports on your system and fire detection points
- Object icons on the graphical CAD-based maps like fire panels, points and zones give the operator a complete overview
- Fire alarm events can trigger Audio-visual notifications send out information Email
- Flexible reporting tools with pre-defined reports, email on event, launch on schedule
- MZX Fire detection panels are approved in more than 17 EMEA Countries
- Simplified configuration through automatic import of Fire panel configurations
- Trigger CCTV and video recording upon the activation of a fire alarm device
- Automated reporting of object status, for example Smoke detector dirtiness



Why use C•CURE 9000 integration with Fire Detection?

C•CURE 9000 is a powerful security and event management system that provides IT standard tools and innovative architecture. This allows users to manage and monitor multiple security and emergency applications from one integrated security system.

This integrated C•CURE 9000 security system built on Microsoft's sophisticated .NET v4 technology offers security staff a flexible, efficient, fast and secure working environment, both locally and remotely. C•CURE 9000 provides unsurpassed integration capabilities, advanced alarm routing, remote access for administration and monitoring. C•CURE 9000 supports multiple layouts and monitoring station screens in the same window. This enables you to focus on system activity, while another screen displays your live video.

C•CURE 9000 offers preconfigured layouts or an empty palette for each administrator to customise. Drag and drop different viewers – some that represent objects like fire detection points or intrusion zones, live video tours and specific types of activities, live camera views, dynamic views of system activity or configuration data. The most

powerful thing about the monitoring station is that each screen is live and interactive. With appropriate permissions, you can manipulate data fields, change views, navigate around maps, launch a video tour, and perform quick searches and queries – all from the same interface in real time.

Import CAD (.dwg, .dxf) or raster files (.bmp, .jpg, etc.) and populate complex floor plans with your security objects. All original CAD layers are immediately visible or can be hidden for easy viewing. Create new layers, and drag and drop security objects such as cameras, tours, inputs/ outputs and more directly to your drawing with scalable icons. One-click magnification and tracking views provide the ability to manage and navigate around your floor plans. For expansion projects, easily update or replace your CAD drawings without having to add security icons again.

Speed and accuracy in alarm handling is of paramount importance, C•CURE 9000 provides a clear view of events and alarms, allowing the operator to take appropriate actions. All instructions can be stored in C•CURE 9000 and called-up when an alarm event occurs. The operator can attach action log messages to the events.

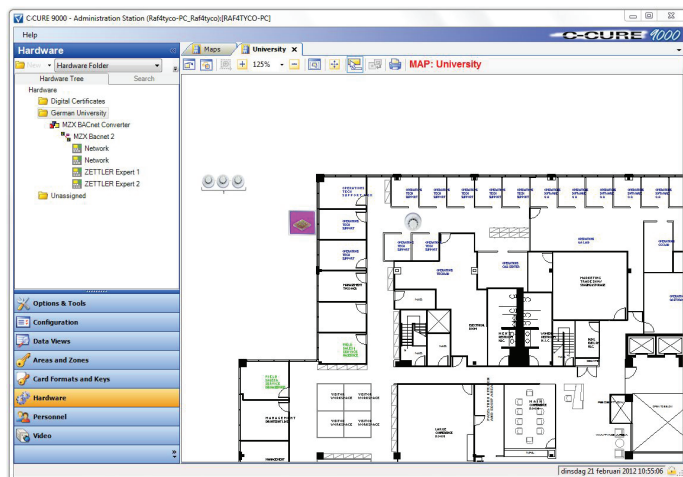
Features

Different notifications can be defined for events or incidents. These notifications are sent via email to a person or pre-defined group of people when an event occurs. In the case of a fire alarm event, a roll call report can be printed and or emailed.

Run pre-defined reports by an event or by schedule and automatically send via email. These reports can be various subjects, historical alarm notifications, system object status, detector dirtiness notifications to name a few.

Expand the security management system as your business grows. C•CURE 9000 is totally scalable from a single site, single workstation solution up to an Enterprise Security management system with multiple workstations and remote central monitoring. Software House connected program provides integration to various security or building facility products and is continuing to expand. For a complete list of available integrations please visit www.swhouse.com

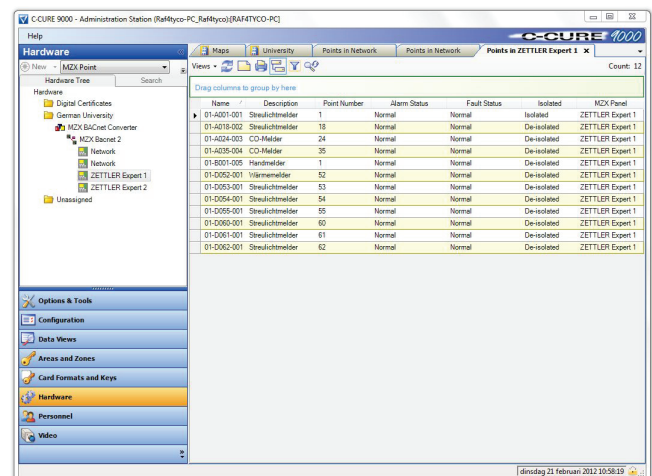
- Zone alarms, point alarms from fire inputs
 - Normal
 - Alarm
 - Isolation-Bypass
 - Fault
 - Dirtiness
- MZX panel faults, faults from zones and points
 - Normal
 - Alarm
 - Isolation-Bypass
 - Fault
 - Dirtiness
- Mains fault, system faults
- Pre-alarms and alarm warnings
- Isolations of zones, loop points, R-Bus and local I/O points
- Day mode
- Analogue values of automatic detectors
- Sound silence



How does C•CURE 9000 MZX Fire Detection Interface work?

The C•CURE 9000 and MZX fire panel system integration supports the secondary annunciation of the devices, panel events and panel health status data. The integration into C•CURE 9000 is based on the BACnet protocol.

Data coming from the MZX fire panels is passed through a BACnet converter. The integration establishes and maintains the connection to the BACnet converter. Connection type, panel and point data (inclusive, name, model, status) will be acquired into C•CURE 9000. The MZX fire interface support multiple device types connected to the MZX fire detection panels such as fire sensors, fire zones, call points and their corresponding statuses include:

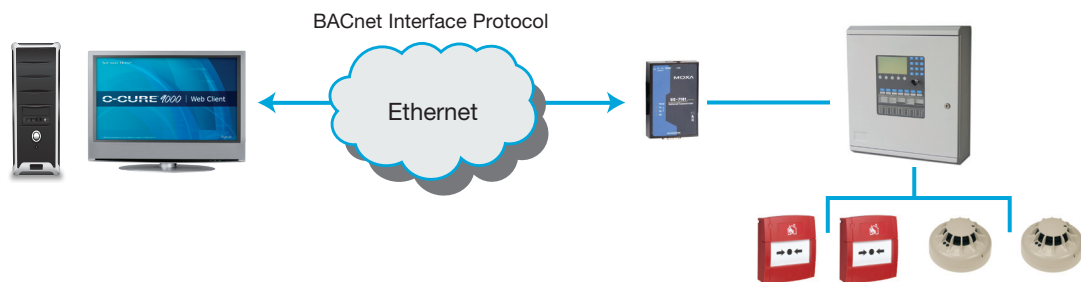


Version Compatibility

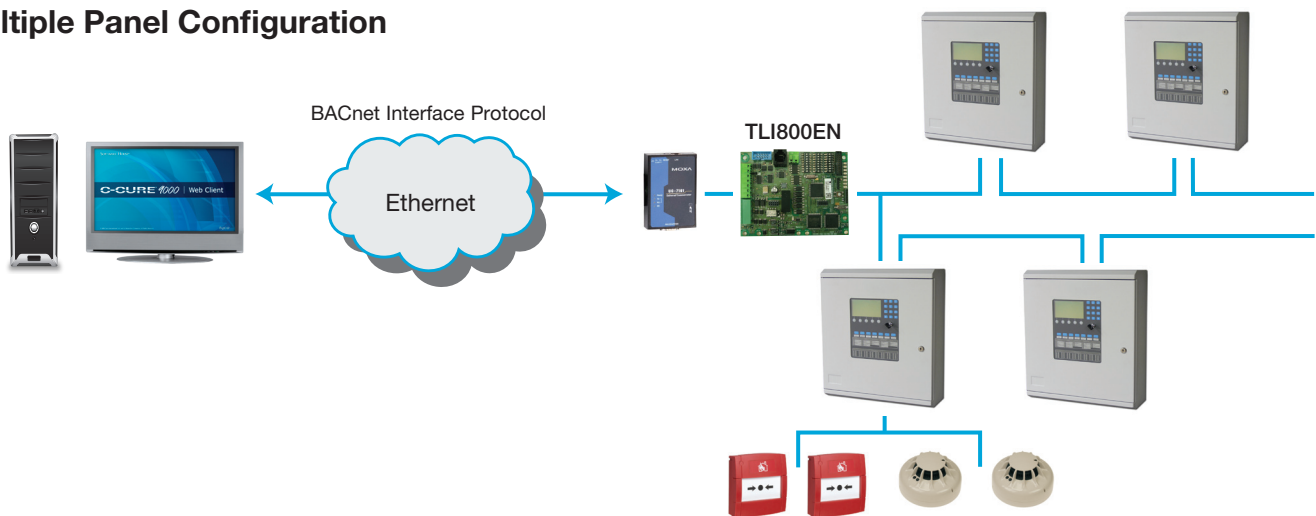
- C•CURE 9000: Version 2.02, Stand Alone or parts of Enterprise solution, SAS
- C•CURE 9000 Driver for MZX Panel: 1.0.45.0 or higher
- MZX Panel: Panels support MX Speak 3.x, 4.x and 5.x, including MX1000, MX4000, T2000, ZX1, ZX4, MZX125, MZX250, MZX251, MZX252, MZX2-100 and MZX2-200, MZX250 and MX4000
- MZX Panel Firmware: Panel firmware revision: 8.0 and higher

- MZX Consys version: 19 and higher
- MZX BACnet: Interface version 1.1 and higher
- MZX BACnet Device UC-7101: The UC-7101 BACnet converter is a mini RISC-based embedded computer which converts fire data to the BACnet communications protocol. A single MZX panel has the ability to be connected to the UC-7101, multiple panels can be connected to a single BACnet converter with the use of TLI800 network cards, each converter can support 2000 points, the maximum converters that can be used is 3 so the maximum is 6000 points.

Single Panel Configuration



Multiple Panel Configuration



System Software Requirements

C•CURE 9000 Server Recommended Software

Operating System

Series L-N Windows 7 Professional (32- and 64-bit)¹
Windows Server 2008 R2 (64-bit)¹
Windows Server 2008 Standard and Enterprise
Windows Server 2003 Standard SP2 or later
Windows Server 2003 Enterprise SP2 or later
Windows XP Professional SP3 or later

Series P-S Windows Server 2008 R2 (64-bit)¹
Windows Server 2008 Standard and Enterprise
Windows Server 2003 Standard SP2 or later
Windows Server 2003 Enterprise SP2 or later

Ordering Information

CC9000-MZX MZX Technology® Fire Panels integration option for C•CURE 9000

C•CURE 9000 Client Workstation Recommended Software

Operating System

Windows 7 Professional (32- and 64-bit)¹
Windows Vista Business SP1 or later
Windows Vista Enterprise SP1 or later
Windows XP Professional SP3 or later
Server 2003 Standard SP2 or later
Windows Server 2003 Enterprise SP2 or later

(1) Refer to the "Software House Connected" Compatibility Matrix on www.swhouse.com to confirm the supported versions of C•CURE 9000



Related Products



C•CURE 9000
SiteServer



C•CURE 9000
Web Client



iSTAR
Controllers



VideoEdge
NVR

Approvals



www.swhouse.com

The trademarks, logos, and service marks displayed on this document are registered in the United States [or other countries]. Any misuse of the trademarks is strictly prohibited and Tyco International Ltd. will aggressively enforce its intellectual property rights to the fullest extent of the law, including pursuit of criminal prosecution wherever necessary. All trademarks not owned by Tyco International Ltd. are the property of their respective owners, and are used with permission or allowed under applicable laws.

Product offerings and specifications are subject to change without notice. Actual products may vary from photos. Not all products include all features. Availability varies by region; contact your sales representative.
© 2012 Tyco International Ltd. and its respective companies. All rights reserved. SH0178-DS-201202-R01-A4-EN-EMEA