

Pinnacle 9



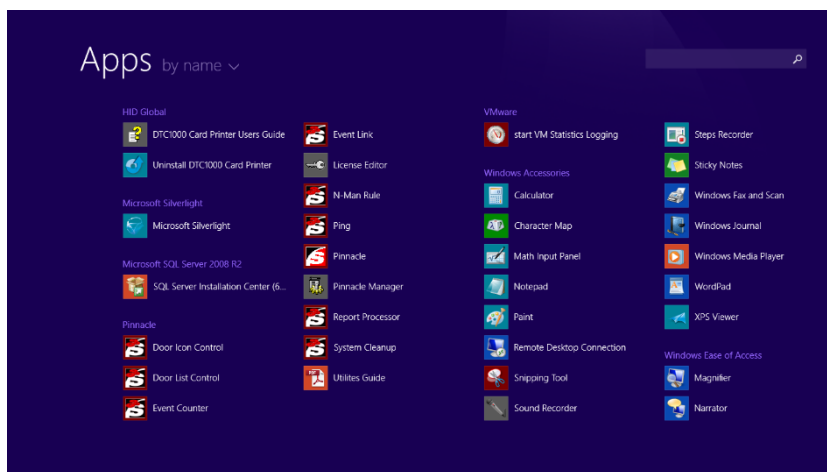
Innovative Security Management Since 1979

Intelligent security management platform for Windows®

Pinnacle 9® is an advanced access control and event management software platform for Windows®. The core features and seamless integration of best-in-class technology partners provide users with an expandable and highly functional solution. Built upon the Sielox access control innovation legacy of more than 35 years, Pinnacle 9® is an advanced system design with multiple layers of scalable control for small office environments to global corporations with multiple buildings and unique access requirements. Pinnacle 9® is available in five configurations – Ultra, Lite, Standard, Plus, and Professional – to manage your access control needs today and to expand with your organization's needs.

Pinnacle is a feature-rich access control and event management system designed for ease of use. Cardholder database management and access level assignment is made simple through easy to navigate tabs or by an automated scheduler in conjunction with Pinnacle Data Exchange to automate additions, deletions and modifications of any cardholder data record. A display of your access and alarm events are available in real-time via the Pinnacle event monitor, utilizing up to four window views for unequalled control and flexibility. A wide range of event filters manage the display and provide alarm notifications via pop-up, e-mail and *.wav settings.

As part of the Sielox Core Products line, Pinnacle 9® is designed by Sielox engineers and manufactured in the USA. Both Sielox Pinnacle and the 1700 controller have been developed to meet or exceed any user requirement from entry level to enterprise-wide systems. The marriage of advanced management software with an advanced controller from a single vendor has been a proven technology and application success since 1979. Legacy 32-bit, 16-bit and 8-bit controllers are also supported so no existing controllers are left behind, protecting your security technology investment.



New OS – Pinnacle 9 is now compatible with Windows® 8/8.1 Professional and Windows Server 2012.

Five configurations for any application

Powerful, flexible and scalable

Wireless locks support with no licenses

Video integration with no licenses

Web client from desktop or mobile

Virtual environment support

Single sign-on authentication

Photo ID badging support

Graphical mapping

FIPS 201 compliant

Made in the USA

Pinnacle 9

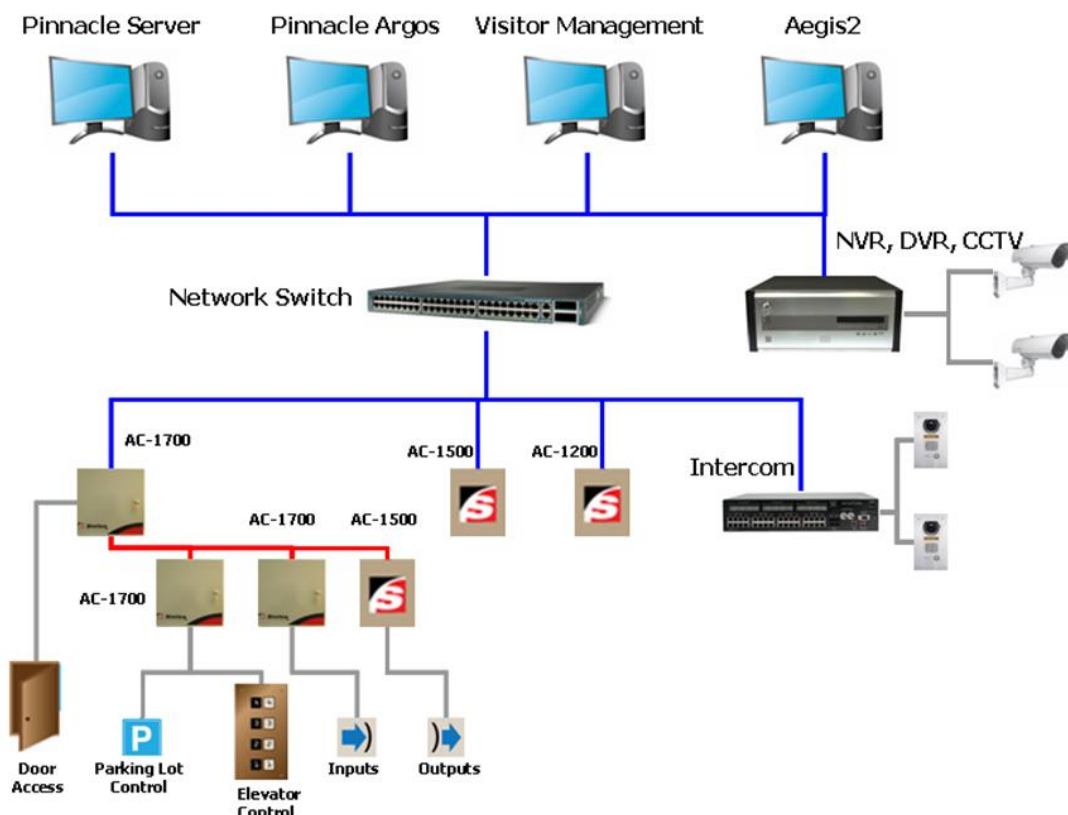
Continuous innovative development delivers advanced solutions

Pinnacle 9® utilizes Microsoft® SQL Server to ensure IT compatibility and ease of management. Database partitioning is also offered as an option, allowing a single Pinnacle System to be divided into smaller independent databases. Central administration and shared devices are both fully supported across all partitions.

Sielox 1700 controllers and Pinnacle version 9 can support up to 32 wireless locks in addition to the two hard wired doors/readers per controller. Wireless lock solutions are an effective technology that dramatically reduces installation costs of traditional hard-wired access control doors by incorporating the Lock, Request to Exit, Door Status Switch and Reader in one complete package. Installation of this wireless door package virtually eliminates the need for wiring while recognizing significant time saving installation on a typical door – usually in less than an hour.

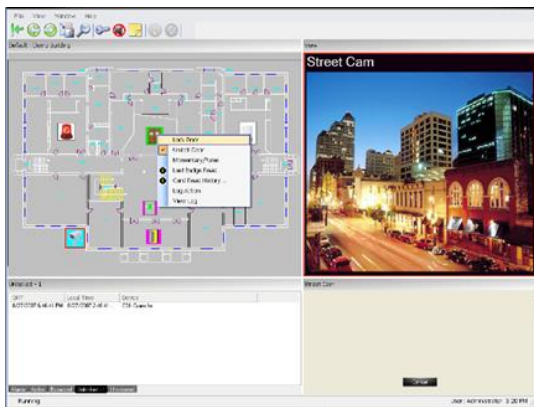
Virtual environments using VMWare or MS HyperV is supported by Pinnacle 9®. Fault Tolerance (FT) provides failover capabilities via the virtual environment's software vSphere which hosts the Pinnacle software. vSphere allows Pinnacle® to launch dynamically in a virtual environment thereby providing hot stand-by while requiring the purchase of a single Pinnacle® license.

Authentication is important to protect your enterprise data. Pinnacle 9® supports a single sign-on via Windows Authentication in addition to the Legacy Authentication (Pinnacle Login). In Windows Authentication mode, Pinnacle will use a Windows Account mapped to a Pinnacle Account to either start Pinnacle with no login (Windows Authentication), present a Legacy Pinnacle Login screen, block the user, or give the user the ability to choose either a Pinnacle or Windows Login (Mixed Mode).





Pinnacle Argos™ is a Web based application that integrates Pinnacle events to CCTV devices utilizing the Costar line of DVRs and NVRs with no driver or license fees.



Aegis2 is a graphical command and control integration software that can be installed on the same computer with Pinnacle, standalone, or deployed on multiple workstations. Create maps, drag and drop cameras, intercoms, doors, readers, inputs and outputs to a map and control with a mouse. Events can pop-up video on the screen, go to camera presets, and start DVR or NVR recording.

GSA Contract Holder

Contract#: GS-07F-0337J



Web Client - Pinnacle features an optional web client allowing you to manage and monitor your system from any computer or mobile device. Upgrades are made at the server; there is no need to upgrade workstation software. Launch Pinnacle from a browser on your Windows, Linux, Android or Apple devices.

Photo ID Badging - supports image capture as a standard feature and badge design and printing are optional. Simple on-screen editing features include color, brightness, and contrast control, along with image cropping and red-eye removal. Images are stored as .jpeg files and are available for event display, badge print or dossier.

Event Video Link (EVL) - now links to any DVR or NVR that supports the industry ATM/POS standard enabling the ability to link access control events to video for pop up, viewing and real-time recording. View live and recorded video for free without expensive VMS installation recurring licensing costs. Mark video events with alarm text-data for legal forensic requirements.

First Person Rule (Snow Day) - any door scheduled to be unlocked via Time Zone, will not do so until an authorized cardholder is admitted prior to the unlock schedule. There is never a need to worry that your building is unlocked when you are not there.

Pinnacle Utilities - in addition to the core Pinnacle application, Sielox has developed unique applications that are launched independently and provide quick or persistent views of control and search functions. The library of utilities include: Event Counter, N-Man (Control and Occupancy), Door Icon, Door List Control, System Cleanup, Ping and Report Scheduler.

Elevator Control - hardwired control up to 60 floors and Smart Control capabilities with Otis, ThyssenKrupp and Schindler

Pinnacle SDK – custom development application

New OS - Windows® 8/8.1 Professional, Windows Server 2012 compatible

Pinnacle 9

	Ultra	Lite	Standard	Plus	Pro
Number of Online Readers	8	32	64	128	Unlimited
Number of Cards	500	2,000	4,000	10,000	Unlimited
Client Workstations-Rich and Web	Single User	Single User	1 to Unlimited	1 to Unlimited	1 to Unlimited
Pinnacle Argos - Number of cameras ¹	N/A	32	32	32	32
Addressable Controllers	4	16	32	64	Unlimited
Wireless Locks ² (Salto / Schlage)	64 /128	128 / 256	256 /512	512 /1024	Unlimited
Time Zones ³	Unlimited	Unlimited	Unlimited	Unlimited	Unlimited
Total Access Levels ⁴	Unlimited	Unlimited	Unlimited	Unlimited	Unlimited
Individual Expiring Access Levels per Cardholder ⁵	99	99	99	99	99
Number of Cardholder Custom Fields	Unlimited	Unlimited	Unlimited	Unlimited	Unlimited
Alarm Levels (with advanced alarm notification)	99	99	99	99	99
Holidays	32	32	32	32	32
Microsoft SQL Server 2000 Desktop Edition	Included	Included	Included	Included	Included
User Privileges	Included	Included	Included	Included	Included
First Person Rule (Snow Day)	Included	Included	Included	Included	Included
Event Filtering (w/ email support)	Included	Included	Included	Included	Included
Local, Regional, and Global I/O Links ⁶	Included	Included	Included	Included	Included
Hardware COM Server Licensing ⁷	N/A	N/A	N/A	N/A	Optional
Access Level Input and Output Control	Included	Included	Included	Included	Included
Multiple Card Formats	Included	Included	Included	Included	Included
System Reminders	Included	Included	Included	Included	Included
Scheduler (for recurring functions)	Included	Included	Included	Included	Included
Remote Dial-up	Included	Included	Included	Included	Included
Standard Reports	Included	Included	Included	Included	Included
Database Partitioning	N/A	N/A	Optional	Optional	Optional
Custom Report License (with use of Crystal Reports)	N/A	N/A	Optional	Optional	Included
Photo ID Badging	N/A	Optional	Optional	Optional	Optional
Pinnacle Data Exchange	N/A	Optional	Optional	Optional	Optional
Visitor Management - EasyLobby SVM™)	N/A	Optional	Optional	Optional	Optional
Aegis2 - Graphical command and control integration software	N/A	N/A	Optional	Optional	Optional
CCTV, DVR, Intercom and Serial Alarm	N/A	N/A	Optional	Optional	Optional
Software Dev. Kit (SDK)		N/A	Optional	Optional	Optional
Smart Elevator Interface- Otis/ThyssenKrupp/Schindler	N/A	N/A	Optional	Optional	Optional

¹ Pinnacle Argos comes with 32 cameras, upgradeable to: Standard - 64, Plus - 128, Pro - unlimited cameras

² Wireless Locks must be purchased from Sielox to avoid additional licensing costs. Only AC-1700 MC's with Pinnacle version 9 support wireless locks.

³ Although Pinnacle supports unlimited Time Zone assignments, 16-bit and 32-bit controller storage limits Time Zones to 64 per TC module (2 fixed as "never" and "always")

⁴ Although Pinnacle supports unlimited total Access Levels, each TC module is limited to 256 total access levels (also see individual cardholder limitations below)

⁵ Pinnacle supports 99 individually expiring Access Levels per cardholder with up to three per cardholders sent to respective TC modules in order of set priority for each cardholder; server authorized enhanced assists are initiated for cardholder Access Levels of lower priority

⁶ Local = I/O linking within the same TC module; Regional = I/O linking within the same AC-1700/AC-900 Main Controller (not applicable with LANLink controllers); Global = I/O linking across AC-1700/AC-900 Main and/or LANLink Controllers within the same server

⁷ Hardware COM Server (Multi-Hardware Server) architecture supports Universal I/O linking across hardware servers

Minimum Requirements: Pinnacle Server and Client Workstations

Operating System (OS Not Included)
Ultra, Lite, Standard, Plus, Professional
 32-bit Windows OS; Server 2003 Standard, Vista Business, Server 2008 Standard, Windows 7 Professional, Windows 8/8.1.
64-bit Windows OS: Windows 7 Professional, Server 2008 R2 Standard, Windows 8/8.1, Windows Server 2012.
(Note: 32 bit Windows 7 Professional is not supported with any version of Pinnacle Web)

Database Engine Guidelines (MSDE Included)
Ultra, Lite, Standard and Plus:
 Greater than 128 readers OR 10,000 cardholders OR 5,000 events per hour OR 4 client workstations OR database partitioning requires the use of MS SQL Server 2000, 2005 or 2008 Standard or Enterprise editions or SQL Express (not included)

Professional:
 MS SQL Server 2000, 2005 or 2008 Standard or Enterprise required (not included); MSDE Desktop Edition is included.
SQL Server 2012 can be utilized only if upgraded from SQL 2005 or later.

Free Hard Disk Space 1 GB hard disk space

Processor / Memory (*see notes)

Client		
	Processor	Memory
Ultra	N/A	N/A
Lite	N/A	N/A
Standard	Pentium 4-3.8 GHz	1GB
Plus	Pentium 4-3.8 GHz	2GB
Professional	Pentium 4-3.8 GHz	2GB
Server		
Ultra	Pentium 4-3.8 GHz	2GB
Lite	Pentium 4-3.8 GHz	2GB
Standard	Pentium Dual Core T4400 @2.2 GHz	2GB
Plus	Pentium Dual Core T4400 @2.2 GHz	4GB
Professional	Pentium Dual Core T4400 @2.2 GHz	4GB

CD-ROM	10X or higher
Monitor/Video	17" SVGA (1024 x 768)
Network Card	10/100 Base-T
Mouse	PS/2, USB, or Serial bus type
Ports	4 USB or 2 serial and 1 parallel
Modem	V.92, V.90, V.34 or V.32

Note: Certain Pinnacle screens, such as the device tree, requires MS Paint to be resident on your computer (included with Windows). Actual requirements may vary; increasing memory and processor speed has been found to improve performance. Specifications and availability are subject to change without notice. When installing Aegis2 and Pinnacle on the same computer 2 GB of RAM is required for Pinnacle Lite and Standard and 4 GB for Pinnacle Plus and Professional.



Innovative Security Management Since 1979

About Sielox

Since 1979, Sielox has designed and marketed intuitive security management systems through a network of select business partners to a variety of end-users within commercial, education, financial, government, industrial, manufacturing and retail markets. From entry-level to enterprise-wide, Sielox scalable solutions exceed today's complex and demanding security environments. Headquartered in Runnemede, New Jersey, Sielox prides itself by providing "Made in USA" solutions.