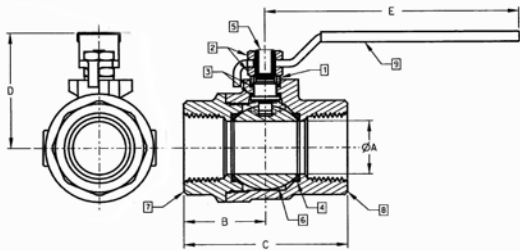


# COMMERCIAL PRODUCTS CATALOG

## Full-Port Bronze Ball Valves

### 77CLF-100/200 SERIES



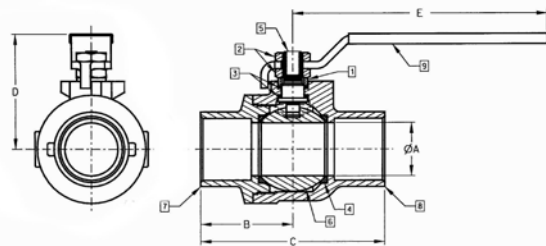
**CONTRACTOR SERIES FULL PORT LEAD FREE BRONZE BALL VALVE WITH SOLID BALL**  
 Apollo's® solid ball design delivers true full-port performance with 100 percent American construction.

#### FEATURES

- ASTM grade EZ-Solder™ lead free bronze
- Solders just like standard bronze
- 600 psig CWP, non-shock
- 150 SWP steam rating
- Premium multi-fill MTFE seats and stem packing
- Adjustable stem packing
- Blow-out proof stem design
- Solid brass ball, plated
- Vacuum service to 29 in. Hg
- Full-port design through 2-1/2"
- Reversible handle orientation
- NSF/ANSI 61-G
- NSF/ANSI 372 Lead Free
- ANSI B16.18 solder end version available as 77CLF-200 Series

#### OPTIONS

- 2-1/4" stem extension (-04)
- CS tee handle (-07)
- Therma-Seal™ insulating tee handle (-11)
- SS Latch-lock handle (-27),
- Stem extension and balancing stop (-94)
- SS vented ball and stem (77CLF140 and 77CLF240 series)
- Other handle options available



LF Model Number	Size (in.)	Dimensions (in.)					Cv	Wt. (lbs.)
		A	B	C	D	E		
<b>Threaded Connection</b>								
77CLF-101-01	1/4	0.37	0.95	1.97	1.76	3.74	4.5	0.6
77CLF-102-01	3/8	0.37	1.07	2.09	1.76	3.74	7.2	0.6
77CLF-103-01	1/2	0.50	1.15	2.25	1.79	3.74	15.5	0.6
77CLF-104-01	3/4	0.75	1.32	2.65	2.00	4.88	35.6	1.1
77CLF-105-01	1	1.00	1.53	3.07	2.19	4.88	68.1	1.8
77CLF-106-01	1-1/4	1.25	2.04	4.08	3.13	7.06	125.0	4.2
77CLF-107-01	1-1/2	1.50	2.21	4.43	3.29	7.06	177.0	4.6
77CLF-108-01	2	2.00	2.76	5.29	3.83	7.06	389.0	8.1
77CLF-109-01	2-1/2	2.50	3.12	6.37	4.51	8.06	503.0	16.2
<b>Solder Connection</b>								
77CLF-202-01	3/8	0.37	1.30	2.21	1.76	3.74	7.2	0.6
77CLF-203-01	1/2	0.50	1.41	2.58	1.79	3.74	15.5	0.6
77CLF-204-01	3/4	0.75	1.64	3.03	2.00	4.88	35.6	1.0
77CLF-205-01	1	1.00	1.92	3.61	2.19	4.88	68.1	1.6
77CLF-206-01	1-1/4	1.25	2.36	4.44	3.13	7.06	125.0	3.9
77CLF-207-01	1-1/2	1.50	2.63	4.89	3.29	7.06	177.0	5.8
77CLF-208-01	2	2.00	3.17	6.06	3.83	7.06	389.0	10.2
77CLF-209-01	2-1/2	2.50	3.77	7.14	4.51	8.06	503.0	14.8