

Ruggedized/Industrial Connectivity

Siemon’s line of ruggedized/industrial connectivity allows cabling professionals to deliver high-performance copper and fiber cabling in harsh environments that would damage standard connectivity. Including sealed and vibration-resistant outlets, couplers, cords and mounting accessories for twisted-pair copper and fiber systems, Siemon’s ruggedized connectivity is ideal for industrial, outdoor and other harsh environments.

Section Contents

- Industrial MAX®14.1
- Industrial MAX 6/6A Outlets 14.2
- Industrial MAX 5e Outlets 14.2
- Industrial MAX 5e Plugs 14.2
- Industrial MAX 6 Modular Patch Cords 14.3
- Industrial MAX 5e Modular Patch Cords 14.3
- Outlet to Plug Assemblies 14.3
- Industrial MAX Dust Caps 14.4
- Industrial MAX Surface Mount Boxes 14.4
- Industrial MAX Stainless Steel Faceplates 14.4
- Industrial LC Fiber Connectivity 14.5
- Industrial LC Fiber Plug and Outlet 14.6
- Field-Installable LC Fiber Connector 14.6
- Industrial LC Fiber Upgrade Kit 14.6

Industrial MAX[®]

Siemon is well-known for its industry leading high performance connectivity. The same high performance copper and fiber products are available with our patented Industrial MAX housings. Industrial MAX outlets and modular patch cords provide an IP66/IP67-rated seal, protecting plug and outlet contacts from dust, moisture, vibration, and common cleaning chemicals. The Industrial MAX solution is ideal for protecting valuable connections in laboratory environments, hospitals, food processing plants and other harsh environments.

Ensures Proper Seal — Bayonet-style mating ensures proper plug depth into the outlet and an IP66/IP67 rated seal



Universal Wiring — Each outlet is compatible with both T568A and T568B wiring options

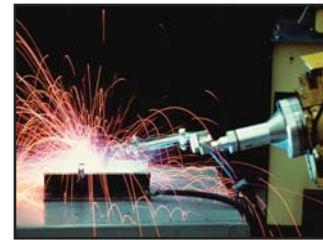


Siemon's patented Pyramid Wire Entry System on S310 blocks separates paired conductors when lacing cables to simplify and reduce installation time.

Standardized Interface — The Industrial MAX Connector has been recognized by the Open DeviceNet Vendor Association (ODVA), TIA TR 42.9 and IEC 61076-3-106

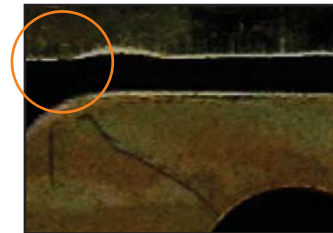


Easy Termination — The UTP Industrial MAX outlet utilizes a standard 110 tool for quick and easy punch-down termination



Meets Harsh Demands of the Environment

Specially designed Industrial MAX 5e and 6 connectors can withstand humidity, dust and vibration.



Vibration Causes Pitting In Typical Outlets

Seen under a microscope after exposure to extreme vibration, contact between a typical modular plug and outlet can pit the contact pins, causing intermittent transmission problems.



Humidity Affects Typical Outlets

Humidity corrodes contact pins inside typical outlets. Repeated exposure can eventually destroy the contact pins, rendering the outlet unusable. The Industrial MAX outlet's special housing prevents this corrosion.

Industrial MAX® 6/6A Outlets

The Industrial MAX outlet features a MAX module housed in a protective shell. The outlet's outer housing is made of durable, chemical-resistant, industrial-grade thermoplastic and features Siemon's patented bayonet-style mating design. Category 6 or 6A performance is guaranteed in harsh environments.

The industrial connector's bayonet-style mating prevents over-tightening which could damage contact pins inside the outlet or under-tightening which prevents a proper seal.



Part #	Description
X6	Category 6 UTP, industrial outlet, T568A/B
X6S	Category 6A compatible, shielded industrial outlet, T568A/B

Industrial MAX 5e Outlets

The Industrial MAX outlet features a category 5e MAX module housed in a protective shell. The outlet's outer housing is made of durable, chemical-resistant, industrial-grade thermoplastic and features Siemon's patented bayonet-style mating design. Guaranteed category 5e performance to 160 MHz even in the most punishing environments.



Part #	Description
X5	Category 5e UTP, industrial outlet, T568A/B
X5S	Category 5e shielded, industrial outlet, T568A/B
X5-X5S	Category 5e shielded, industrial bulkhead coupler (Industrial outlet to industrial outlet)

Industrial MAX 5e Plugs

The Industrial MAX Plug features a category 5e modular plug contained in Siemon's industrial-grade housing with patented bayonet-style mating design. The plug can be terminated in the field, allowing custom lengths to be assembled quickly on site in the event a cable is cut or damaged. It terminates twisted-pair cable with 22 – 26 AWG (0.64 – 0.40mm) solid or 7-strand conductors with an insulated conductor diameter of 0.86 – 0.99mm (0.03 – 0.04 in.).



Part #	Description
XP85	Category 5e UTP, industrial plug, 8-position, 8-contacts
XP85S	Category 5e shielded, industrial plug, 8-position, 8-contacts

Industrial MAX[®] 6 Modular Patch Cords

Industrial modular patch cords combine the high performance and quality that Siemon cords are known for with a protective industrial-grade plug housing. These assemblies feature standard MC[®] 6 cordage with a MC 6 plug on one end and an industrial plug on the other.

Part #	Description
XC6-(XX)	Category 6 UTP, industrial plug-to-industrial plug
XC6-(XX)-B05	Category 6 UTP, industrial plug-to-modular RJ-45 plug, yellow boot

Use (XX) to specify length: 03 = 0.9m (3 ft.), 05 = 1.5m (5 ft.), 07 = 2.1m (7 ft.), 10 = 3.1m (10 ft.), 15 = 4.6m (15 ft.)



Industrial MAX 5e Modular Patch Cords

Designed to withstand the rigors of a factory floor environment, our industrial category 5e stranded cordage is petroleum and UV resistant, is not effected by common chemicals and water, operates in a wider temperature range and provides a longer flex life. Available in three industrial jacket types to meet various environmental requirements.

Part #	Description
XC5-(XX)	Category 5e UTP, industrial plug-to-industrial plug, PVC jacket
XC5-(XX)T	Category 5e UTP, industrial plug-to-industrial plug, TPE jacket
XC5-(XX)-B05	Category 5e UTP, industrial plug-to-modular RJ-45 plug, yellow boot, PVC jacket
XC5-(XX)-B05T	Category 5e UTP, industrial plug-to-modular RJ-45 plug, yellow boot, TPE jacket
XC5NS-(XX)-B05T	Category 5e UTP, modular RJ-45 plug-to-modular RJ-45 plug, yellow boot, TPE jacket
XC5S-(XX)	Category 5e Shielded (SF/UTP) industrial plug-to-industrial plug, PVC jacket
XC5S-(XX)T	Category 5e Shielded (SF/UTP) industrial plug-to-industrial plug, TPE jacket
XC5S-(XX)U	Category 5e Shielded (SF/UTP) industrial plug-to-industrial plug, PUR jacket
XC5S-(XX)-B05	Category 5e Shielded (SF/UTP) industrial plug-to-modular RJ-45 plug, yellow boot, PVC jacket
XC5S-(XX)-B05T	Category 5e Shielded (SF/UTP) industrial plug-to-modular RJ-45 plug, yellow boot, TPE jacket
XC5S-(XX)-B05U	Category 5e Shielded (SF/UTP) industrial plug-to-modular RJ-45 plug, yellow boot, PUR jacket
XC5SNS-(XX)-B05T	Category 5e Shielded (SF/UTP) modular RJ-45 plug-to-modular RJ-45 plug, yellow boot, TPE jacket
XC5SNS-(XX)-B05U	Category 5e Shielded (SF/UTP) modular RJ-45 plug-to-modular RJ-45 plug, yellow boot, PUR jacket

PVC = Polyvinyl Chloride, PUR = Polyurethane, TPE = Thermoplastic Elastomer

Use (XX) to specify length: 03 = 0.9m (3 ft.), 05 = 1.5m (5 ft.), 07 = 2.1m (7 ft.), 10 = 3.1m (10 ft.), 15 = 4.6m (15 ft.), 20 = 6.1m (20 ft.)

PVC and PUR jacket color is teal. TPE jacket color is black.



Outlet To Plug Assemblies

Siemon's outlet to plug assemblies provide an avenue to connect to active components mounted within an enclosure. These protected environments allow the use of standard cordage and are available in both UTP and shielded constructions.

Part #	Description
X5-MC5-(XX)-B05	Category 5e UTP, industrial outlet-to-modular RJ-45 plug, yellow boot, CMX
X5S-MC5S-(XX)B05L	Category 5e Shielded (F/UTP), industrial outlet-to-modular RJ-45 plug, yellow boot, LSOH

Use (XX) to specify length: 03 = 0.9m (3 ft.), 05 = 1.5m (5 ft.), 07 = 2.1m (7 ft.), 10 = 3.1m (10 ft.), 15 = 4.6m (15 ft.), 20 = 6.1m (20 ft.)



Industrial MAX® Dust Caps

The Industrial MAX dust caps are the ideal way to protect your investment in your industrial cabling system. Outlet dust caps can be used to protect unused outlets or to seal an outlet during wash down periods when the outlet and plug may be disconnected. Plug dust caps protect Industrial MAX patch cords from exposure to elements or accidental damage when not mated to an outlet.

Dust caps are constructed of industrial-grade thermoplastic for superior protection and durability. Additionally, outlet and plug dust caps feature a chain style retention tether, which prevents them from being misplaced when not in use.

XP-CAP2
Industrial plug dust cap
with retention tether



X-CAP
Industrial outlet dust cap
with retention tether



Industrial MAX Surface Mount Boxes

The Siemon Industrial MAX Surface Mount Box mounts either Siemon copper or fiber industrial outlets. Boxes provide an IP66/IP67 (NEMA 4X) seal and can be mounted on virtually any flat surface. Compression fittings are provided for cable entry.



X-IBOX-01
Industrial surface mount box,
1-port, supplied with 1 cable
entry compression fitting



X-IBOX-02
Industrial surface mount box,
2-port, supplied with 2 cable
entry compression fittings



X-IBOX-03
Industrial surface mount box,
3-port, supplied with 3 cable
entry compression fittings



X-IBOX-04
Industrial surface mount box,
4-port, supplied with 4 cable
entry compression fittings

Note: Compression fittings accommodate cable diameters from 4.1–7.9mm (0.16–0.31 in.)

Technical Tip!

Contact Technical Support for punch tool to create industrial knockouts for custom mounting.

Industrial MAX Stainless Steel Faceplates

Mount Siemon's Industrial MAX outlets into these stainless steel faceplates for a protective seal from moisture and debris. The faceplates are available in 1-, 2- and 4-port options with a rear sealing gasket and carry an IP44 rating.



XFP-S-01-SS
Single gang faceplate,
1-port, stainless steel



XFP-S-02-SS
Single gang faceplate,
2-port, stainless steel



XFP-D-03-SS
Double gang faceplate,
3-port, stainless steel



XFP-D-04-SS
Double gang faceplate,
4-port, stainless steel

Faceplates include mounting screws with sealed screw head.

Industrial LC Fiber Connectivity

Another first from Siemon — the Industrial LC Fiber System. The Siemon Industrial LC Fiber solution provides a robust fiber connection with an IP66/IP67-rated seal and is ideal for protecting valuable connections in laboratory environments, hospitals, food processing plants and other harsh environments.

The Siemon Industrial Fiber solution is ideal for installations requiring extended distances in close proximity to heavy sources of EMI, or where fiber active equipment is used.

Robust Design — Protects fiber connections in virtually any harsh environment



High Performance — Meets TIA-568-C.3 and, ISO/IEC 11801 Ed 2.0 specifications for multimode and singlemode components

Specialized Bend Relief — Compression fitting provides a superior rear seal and ensures fiber meet minimum bend radius requirements

Proper Seal — Bayonet-style mating ensures proper fiber alignment and an IP66/IP67 rated seal

Field-Termination — Plug includes two industrial qualified multimode or singlemode LC connectors that accepts 2 strand, round, breakout style fiber optic cable

Rear of adapter accepts standard LC connectors



Precision Performance

R&D labs develop, design and implement rigorous testing programs using sophisticated instrumentation. The Industrial LC provides reliability with leading edge technology for applications where highly accurate performance is critical.



Robust and Reliable

Industrial Fiber connections help to streamline operations, improve product availability, and reduce costs in manufacturing environments.



Meets Harsh Demands of the Environment

The Industrial LC connector is ideal in areas where chemicals, corrosive gases and liquids are commonplace.

Industrial LC Fiber Plug and Outlet

Part #	Description
XPLC2-MM	Industrial LC fiber plug, multimode, duplex Includes two multimode LC connectors
XPLC2-SM	Industrial LC fiber plug, singlemode, duplex Includes two singlemode LC connectors
XLC-MM	Industrial LC fiber adapter, multimode, duplex
XLC-SM	Industrial LC fiber adapter, singlemode, duplex



Note: Industrial LC fiber plug accepts 2 strand, round, breakout style fiber optic cable with O.D. ranges from 5 – 8mm (0.2 – 0.3 in.) with two 2.4 – 3.0mm (0.1 – 0.12 in.) jacketed subunits.

Field-Installable LC Fiber Connector

Siemon LC buffered connectors have been qualified for use in Siemon's industrial fiber system. Use these connectors to terminate 62.5/125 or 50/125 micron multimode or singlemode fiber and plug into the rear of the Industrial LC outlet.

Part #	Description
FC1-LC-MM-B80	LC simplex connector, multimode, buffered fiber beige boot
FC2-LC-MM-J80	LC duplex connector, multimode, jacketed fiber beige boot
FC1-LC-SM-B02	LC simplex connector, singlemode, buffered fiber, white boot
FC2-LC-SM-J02	LC duplex connector, singlemode, jacketed fiber, white boot



Industrial LC Fiber Kit

Use the Industrial LC Kit with Siemon's *LightSpeed*® Termination Kit for Industrial LC connector terminations. The kit contains a dual LC polishing puck, which decreases polish time by 50%.

Part #	Description
FTERM-XLC	Industrial LC fiber termination kit used in conjunction with FTERM-L2 includes dual polishing puck
FT-LC2PUCK	Dual LC polishing puck
FT-MSLC2HEAD	Dual LC microscope adapter

