

The Most Versatile Small Piece Accumulator/Folder Series

Skyline SP

CHICAGO[®]



**MULTI-LANE SMALL PIECE FOLDING/
STACKING SYSTEM AVAILABLE IN 4
OR 5 LANE MODELS**

**Available with optional built-in large piece
crossfolder and stacker for unmatched flexibility
to also fold sheets or large table linen.**

Designed for ironing lines dedicated to the high volume production of precision folded and flat stacked small pieces, this versatile multi-lane folder will process a variety of small ironed flatwork items, such as pillowcases, napkins, bar towels, and surgical items, in a choice of zero, one or two primary folds. SP flat stacks folded or unfolded items (such as napkins) in a choice of stack heights on its built-in conveyors. SP is extremely flexible because of its ability to simultaneously process different pieces and fold patterns in each lane to match current production needs. Skyline SP offers the maximum number of folding and stacking functions available in one machine. To assure consistent and accurate folding, all folds are performed by inverter driven rolls and **CHI** microprocessor-controlled air pulses. No mechanical switches or clamps are used. Optional full size built-in crossfolder is available for large pieces such as sheets. Crossfolded items can then be discharged to a side receiving shelf or optional large piece stacker. For direct transfer of items from the SP to a master conveyor system, the Chicago Bridge™ linen transition conveyor is also available.

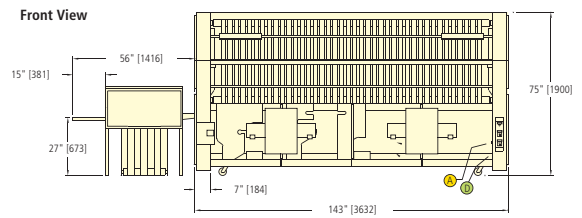
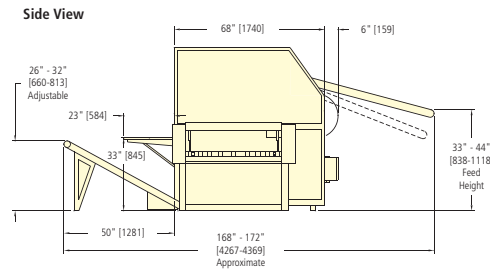
Skyline SP

Dimensions and Utilities

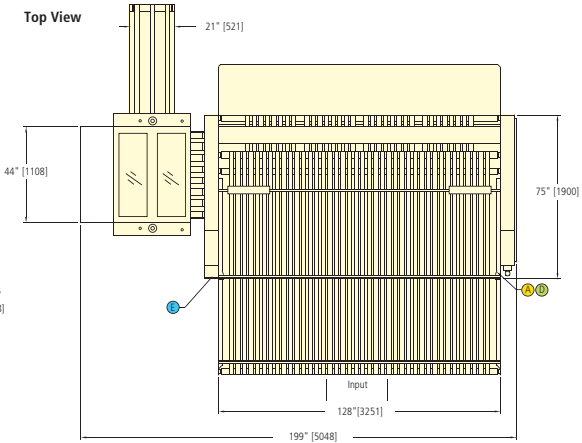
CONNECTIONS	DIA.	HEIGHT
A Air Connection	1/2"	15" (381)
B Compressed Air Drain	1/4"	10" (254)
C Electrical Connection	—	24" (610)

Utility Requirements

	SP-4	SP-4 Large Pieces w/stacker	SP-5	SP-5 Large Pieces w/stacker
Motor HP (kW)	3.0 (2.25)	4.0 (3.0)	3.56 (2.81)	4.56 (3.46)
Air CFM (L/min)	3.5 (100)	4 (114)	3.5 (100)	4 (114)
Shipping Weight lb (kg)	3700 (1680)	4600 (2080)	3800 (1730)	4700 (2130)



Model SP4 shown



NOTE:

- Specifications subject to change without notice. Consult factory for certified construction floorplan.
- Millimeter dimensions are in [].
- All dimensions are +/- 1/2".
- Utility connections are located as shown.
- Discharge configuration may be reversed in field.
- For other lane configurations for special applications consult factory.

Features



Chicago High Intelligence (CHI) Microprocessor Controls

Suggested minimum/maximum piece sizes

Length

Min 16" (400mm) – Max 60" (1525mm)

Width: 4-Lane Models

Min 16" (400mm) – Max 26" (660mm)

Width: 5-Lane Models

Min 16" (400mm) – Max 20" (500mm)

Consult factory for processing other size items.

- Flexibility to perform stacks with one or two primary folds or flat stacks with no folds in each lane
- One or two primary folded or unfolded items in selectable stack heights (consult factory for item size limitations for each type of operation and item)
- CHI panel microprocessor control with alphanumeric message screen
- All operating, testing, adjustment and diagnostic functions through CHI panel
- Programmable parameters customizable for various piece sizes and weights
- Full bypass capability
- AC frequency inverter drive with soft start/stop and variable speed control up to 120 FPM for small pieces and up to 180 FPM for large pieces
- Low maintenance, versatile design
- Complete production data memory displays individual lane counts
- Individual conveyor advance button for each lane
- Audible jam alarm and jog reverse for ease of operation and maintenance
- Individual air pressure regulators with main gauge and auto drain
- Individual and resettable lane counters monitor production on each lane
- Independent lanes allow for two or more different item types to be processed at the same time
- Self-cleaning upward photosensors for reduced maintenance and improved reliability on built-in crossfeed section
- Input conveyor can be matched to any ironer discharge height
- Connectable to CHILINC automatic data accumulation and reporting system



A Complete Range of Separating, Feeding, Ironing, Folding, and Sorting Options

Because Chicago specializes only in flatwork finishing equipment, it can offer the world's widest range of high production separating, feeding, ironing, folding, and sorting equipment. Complete flatwork finishing systems range from automated multi-roll systems producing over 2000 pounds per hour to compact ironers for small on-premise laundries.

The Skyline Series of automatic folders offer a variety of models for every need including the Skyline Mini for laundries with space limitations.

Chicago's performance record is unmatched in thousands of installations in commercial, textile rental, institutional, and on-premise laundries. An experienced Chicago professional will be pleased to make an objective equipment recommendation based on your production, space, utility, and budget requirements.

Contact your local Chicago distributor or the factory sales assistance office for a no-obligation analysis of your needs.



CHICAGO DRYER COMPANY
2200 North Pulaski Road
Chicago, Illinois 60639-3737 USA

Phone • 773.235.4430
Fax • 773.235.4439
Web • www.chidry.com
Email • chicago@chidry.com