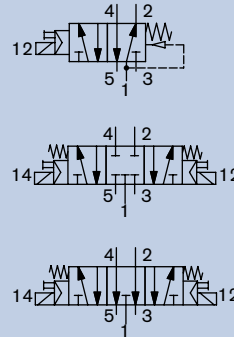


5/2 and 5/3-way Solenoid Valve for pneumatics

6519

G 1/4"

- High flow rate
- Low power consumption
- Single and manifold assembly
- High switching reliability
- Manual override as standard
- Corrosion-resistant construction



Type 6519 is a pilot operated 5/2 or 5/3-way valve. The valve width of 32 mm allows high flow rates. The use of high quality materials allows the use of the valves even under outdoor and chemical atmosphere. The valves can be used individually or in blocks.

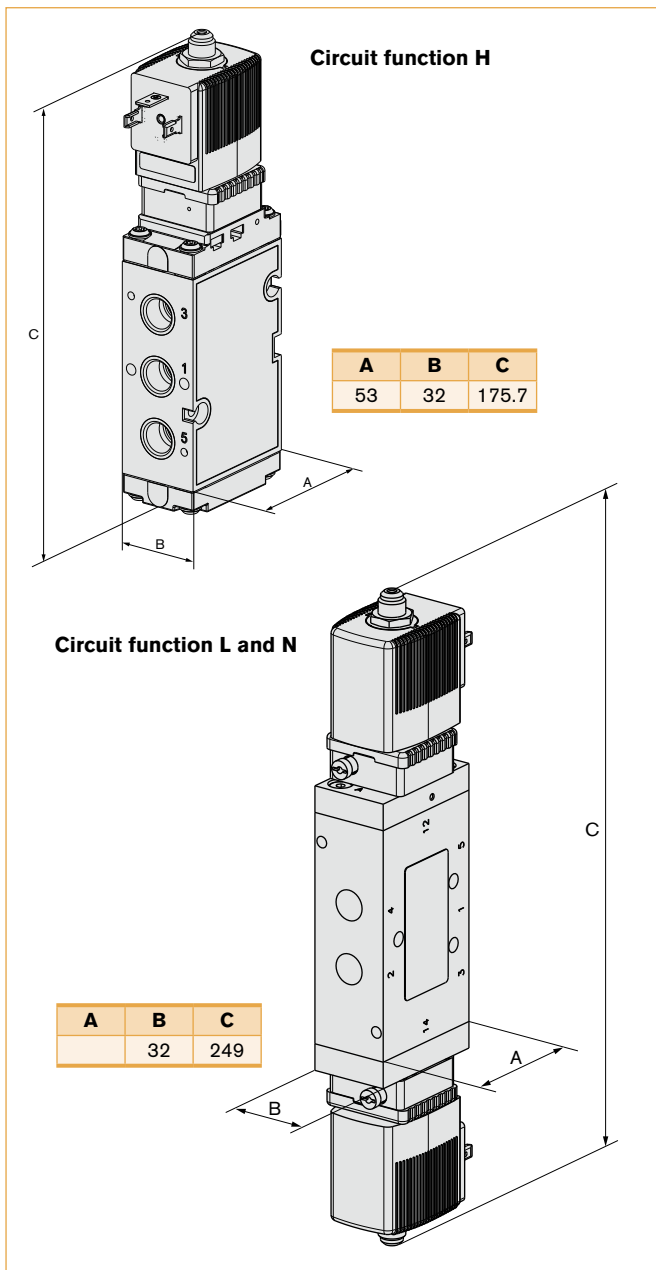
Technical Data

Orifice	DN8.0 and 9.0 mm
Body materials	
Pilot valve	Polyamide
Main valve	5/2-way; polyamide, 5/3-way; aluminium
Thread insert material	Brass (stainless steel on request)
Seal material	NBR, NBR and PUR
Pneumatic connections	
Supply ports 1,3,5	Threaded port G 1/4", can also be flanged
Service ports 2 and 4	Threaded port G 1/4" (on request NPT 1/4")
Electrical connection	Tag connector acc. to DIN EN 175301-803 Form A, Type 2508 (not delivered)
Protection class	IP65 with cable plug
Operating voltage	24 V DC, 24/110/230 V, 50-60 Hz
Voltage tolerance	±10%
Power consumption	AC 11 VA (inrush), 6 VA (hold), DC 2 W
Power consumption coil	2 W (100% continuous rating)
Ambient temperature	-25 °C to +55 °C
Mediums	Lubricated or non-lubricated compressed air, neutral gases Technical vacuum on request
Environmental conditions	Open air, chemical atmosphere
Response times ¹⁾	
Opening	20 ms
Closing	40 ms

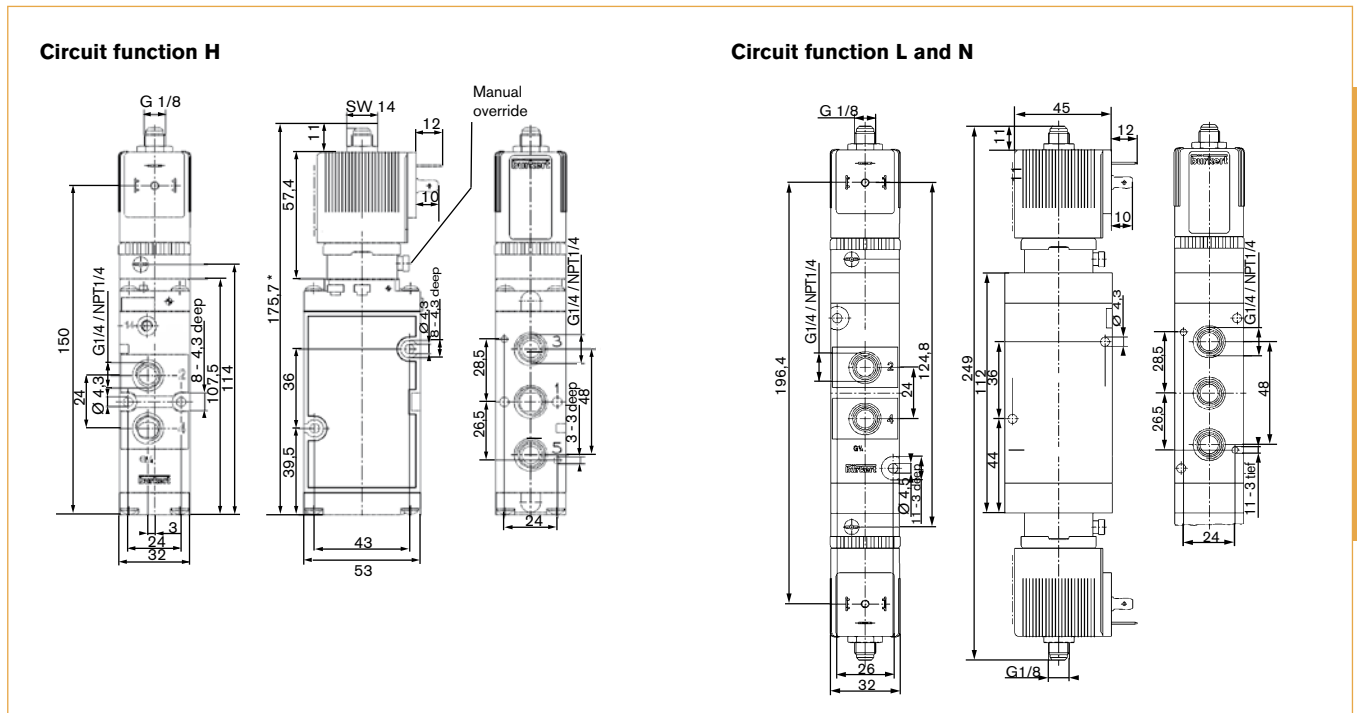
¹⁾ Measured at valve outlet at 6 bar and +20 °C acc. to ISO 12238.
Opening: Pressure rise 0 to 90%,
Closing: Pressure drop 100 to 10%

Note: Pneumatic module see Type 6518

Envelope Dimensions [mm] (see datasheet for details)



Envelope Dimensions [mm] (see datasheet for details)



6519

Ordering Chart

Circuit function	Orifice [mm]	Seal material (Body material)	Port connection threaded port [inch]	QnN-value air ¹⁾ [l/min]	Pressure range ²⁾ [bar]	Mass [g]	Nominal power [W]	Voltage/frequency [V/Hz]	Item no.
Type 6519 threaded version – thread insert material brass, threaded port 1, 3 and 5 can also be flanged									
H 5/2-way valve, servo-assisted, in de-energized position port 2 pressurized, port 4 exhausted	8.0	NBR and PUR (Polyamide)	G 1/4	1300	2 - 8	450	2	024/DC	132 465
								024/50-60	132 466
								110/50-60	132 467
								230/50-60	132 468
L 5/3-way valve, servo-assisted, in middle position all ports locked	9.0	NBR (Aluminium)	G 1/4	1300	3 - 10	720	2	024/DC	132 469
								024/50-60	132 470
								110/50-60	132 471
								230/50-60	132 472
N 5/3-way valve, servo-assisted, in middle position ports 2 and 4 exhausted	9.0	NBR (Aluminium)	G 1/4	1300	3 - 10	720	2	024/DC	132 473
								024/50-60	132 474
								110/50-60	132 475
								230/50-60	132 476

¹⁾ Flow rate: QnN value air [l/min]: Measured at +20 °C, 6 bar pressure at valve inlet, 1 bar pressure difference

²⁾ Pressure values [bar]: Gauge pressures with respect to the prevailing atmospheric pressure