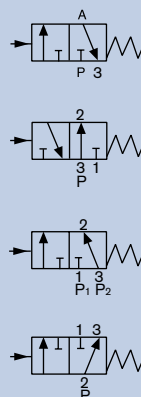


## 3/2-way Globe Valve, pneumatically operated

### G 1/2" - G 2"

- Different flow circuit functions and control functions
- Long life actuator
- Optical display as standard in series
- Rotary actuator aligns the pilot air ports



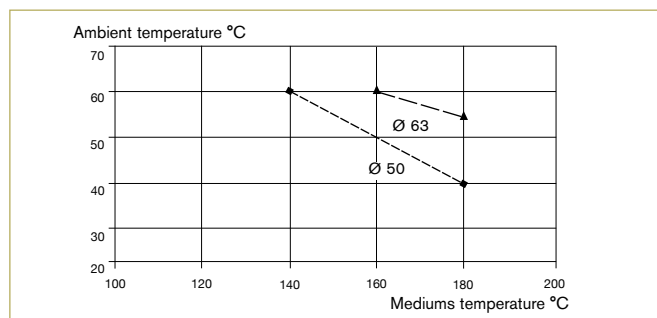
The externally piloted globe valve consists of a pneumatically operated piston actuator and a 3-way valve body. The drive is manufactured as standard in PA. On request PPS is available for high ambient temperatures (e.g. external sterilisation) up to 140 °C. High flow rates are attained with the self proven gunmetal body. A reliable self-adjusting packing gland provides high sealing integrity. Various fluidic circuit functions can be obtained by a simple exchange of the pressure and service ports. These maintenance-free and robust valves can be retrofitted with a comprehensive range of accessories for position indication, stroke limitation or manual override.

### Technical Data

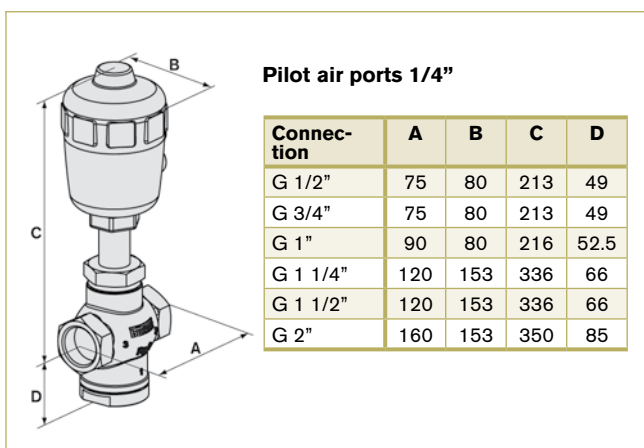
<b>Pressure range</b>	See Ordering Chart
<b>Temperature media</b>	-10 °C to +180 °C
<b>Ambient temperature</b>	-10 °C to +60 °C
<b>Viscosity</b>	Max. 600 mm <sup>2</sup> /s
<b>Body material</b>	Gunmetal
<b>Seal material</b>	PTFE
<b>Actuator material</b>	Polyamide (optional PPS)
<b>Stuffing socket (with silicone grease)</b>	PTFE V-Rings with spring compensation
<b>Max. pilot pressure</b>	10 bar, 7 bar with actuator size Ø 125
<b>Control medium</b>	Instrument air at 6 bar
<b>Safe position</b>	Normally closed or normally open

**Note:** For PA actuators in the sizes 50 and 63, the combination of max. media temperature and max. ambient temperature is as shown in the following chart:

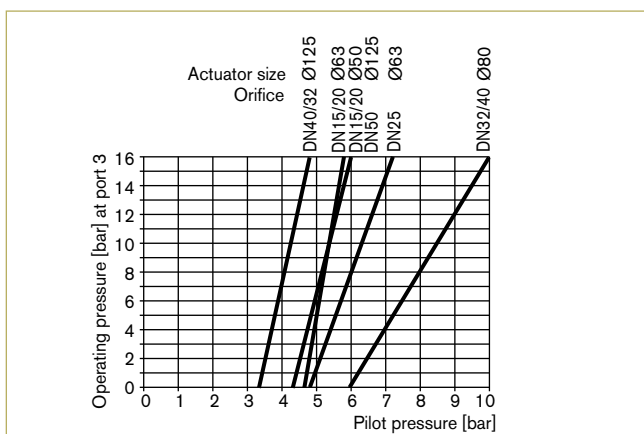
### Ambient temperature



### Envelope Dimensions [mm] (see datasheet for details)



### Pilot pressure chart (CFA, flow direction 3 → 2)



### Options

- Normally open
- Double acting
- Solenoid pilot valves
- Vacuum version
- Feedback switches
- Cleaned for oxygen service
- Stroke limiter

## Ordering Chart

Port connection [inch]	Orifice [mm]	Actuator size [mm]	Kv Value [m³/h]		Pressure range [bar]		Item no.
			1 - 2	2 - 3	1 - 2	2 - 3	
G 1/2	13	63	9	5.5	0 - 16	0 - 16	002 300
G 3/4	20	63	10.5	6.5	0 - 16	0 - 16	002 301
G 1	25	63	17	10	0 - 10	0 - 16	002 133
G 1 1/4	32	125	38	24	0 - 14	0 - 16	002 302
G 1 1/2	40	125	40	26	0 - 14	0 - 16	002 303
G 2	50	125	55	37	0 - 10	0 - 16	002 136