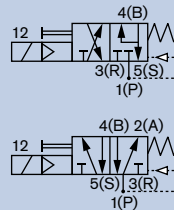
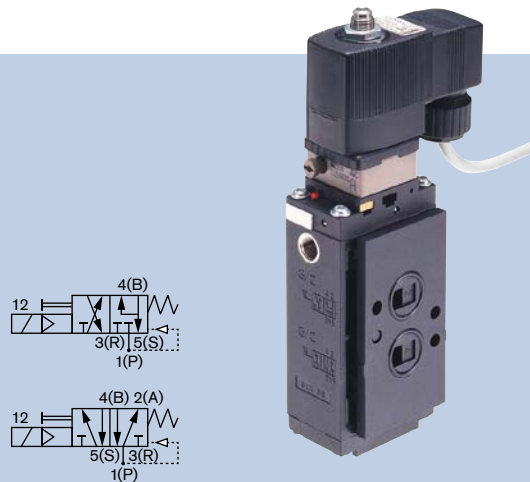


## 5/2 on 3/2-way Convertible Solenoid Valve for pneumatics, NAMUR Ex m/me version

### G 1/4", NAMUR

- Ex m model with 3 m cable
- High flow rate
- High switching reliability
- Manual override as standard
- Corrosion-resistant construction



Type 6519 NAMUR Ex m/me valve for process plants switches reliably, even when fully restricted. The valve made out of premium polyamide can be operated either as a 5/2 or a 3/2-way version through different mounting plates. The NAMUR flange interface allows easy assembly on different pneumatic actuators on the spot.

### Technical Data

<b>Orifice</b>	DN6.0 mm
<b>Body materials</b>	
Pilot valve and main valve	Polyamide (PA)
<b>Thread insert material</b>	Brass, nickel-plated or stainless steel
<b>Seal material</b>	NBR and PUR
<b>Pneumatic connection</b>	
Supply ports 1,3,5	Threaded port G 1/4"
Service ports 2 and 4	NAMUR flange
<b>Electrical connection</b>	Moulded cable, 3 m (non-detachable) or terminal box
<b>Power consumption</b>	Cable version 3W, 5W terminal box version with T5 and Tu 50 °C, 7W with T4 and Tu 55 °C
<b>Protection class</b>	IP65
<b>Approval</b>	Ex m II T5 (cable version), Ex em II T5 (with terminal box), II 2G, II 2D, IP65, max. surface temperature 100 °C
<b>Operating voltage</b>	24/230 V UC (universal current)
<b>Voltage tolerance</b>	±10%
<b>Duty cycle</b>	100% continuous rating
<b>Ambient temperature</b>	-25 °C to +55 °C
<b>Mediums</b>	Lubricated or non-lubricated compressed air, nitrogen, instrument air
<b>Environmental conditions</b>	Slightly aggressive, also open air
<b>Response times <sup>1)</sup></b>	
Opening	20 ms
Closing	40 ms

<sup>1)</sup> Measured at valve outlet at 6 bar and +20 °C acc. to ISO 12238.

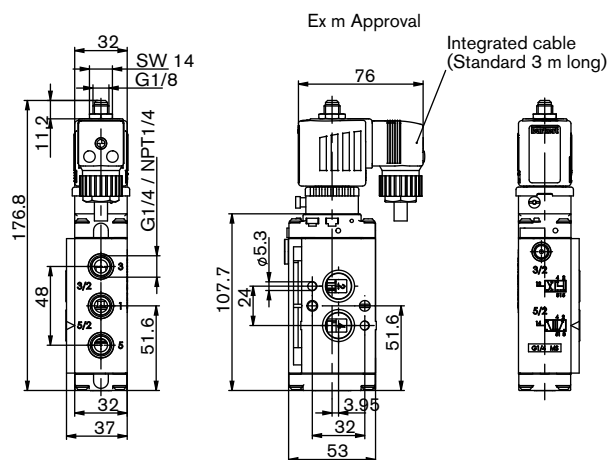
Opening: Pressure rise 0 to 90%,

Closing: Pressure drop 100 to 10%

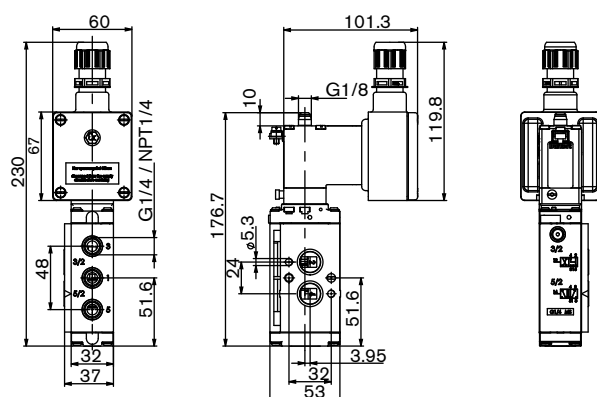
### Envelope Dimensions [mm] (see datasheet for details)

#### 3/2-way valve, circuit function C or 5/2-way valve, circuit function H

##### with moulded cable (3 m long) (Ex m)



#### 3/2-way valve, circuit function C or 5/2-way valve, circuit function H, with terminal box (Ex me)



## Ordering chart

Electric Connection	Thread insert material	Port (P) [inch]	Orifice [mm]	QNn [l/min]	Pressure range [bar]	Item no. voltage/frequency [V/Hz]	
						024/UC	230/UC
<b>Type 6519 NAMUR version, ATEX 5/2-way convertible to 3/2-way <sup>1)</sup></b>							
3m cable	brass nickelplated	G 1/4	6	900	2 - 8	131 627	278 239
	stainless steel	G 1/4	6	900	2 - 8	131 631	278 237
Terminal box	brass nickelplated	G 1/4	6	900	2 - 8	131 430	131 432
	stainless steel	G 1/4	6	900	2 - 8	131 434	131 436

<sup>1)</sup> If the connectors are from stainless steel, the mounting screws will also be from stainless steel