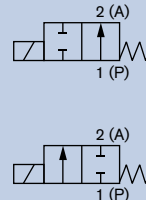


## 2/2-way Compact Solenoid Valve

6027

### G 1/4" - G 1/2"

- Direct-acting
- Brass and stainless steel body
- FKM seal material with high quality standard



Type 6027 is a direct-acting solenoid valve used for shut-off, dosing, filling, and ventilation. The push-over solenoid system is of modular design and the coil can be rotated 360°.

### Technical Data

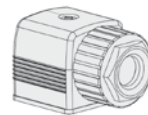
<b>Medium temperature</b>	
normally closed	-10 °C to +140 °C
normally open	-10 °C to +100 °C
<b>Ambient temperature</b>	-10 °C to +55 °C
<b>Viscosity</b>	Max. 21 mm <sup>2</sup> /s
<b>Voltage tolerance</b>	± 10%
<b>Duty cycle</b>	Single valve 100% ED
<b>Body material</b>	Brass or stainless steel 1.4404 (316L)
<b>Coil material</b>	Epoxy (Class H)
<b>Seal material</b>	FKM, (PTFE/FKM and PTFE/graphite for high temperature versions, EPDM on request)
<b>Electrical connection</b>	According to DIN EN 175301-803 Form A for cable plug Type 2508 (not included)
<b>Protection class</b>	IP65 with Cable Plug

Power consumption					
Orifice [mm]	Inrush AC		Hold AC (hot coil)		DC (hot/cold coil) [W]
	[VA]	[VA]	[W]	[W]	
2.0-12.0	105	37	16		16 / 21

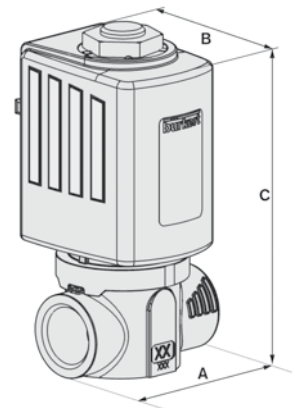
Response times				
Orifice [mm]	Response times AC		Response times DC	
	Opening [ms]	Closing [ms]	Opening [ms]	Closing [ms]
2.0-12.0	10-20	20-30	20-80	20-30

**Response times [ms]:** Measured at valve outlet at 6 bar and +20 °C.  
*Opening:* pressure build-up 0 to 90%  
*Closing:* Pressure relief 100 to 10%

### Envelope Dimensions [mm] (see datasheet for details)



2508 cable plug Form A  
not included



Size	A	B	C
G 1/4"	55	55.5	98.2
G 3/8"	55	55.5	101.2
G 1/2"	59	55.5	103.2

### Options

- ATEX approval
- Higher pressures for gaseous medium to 100 bar
- Oxygen versions
- High temperature version up to +180 °C

## Ordering Chart

Port connection [inch]	Orifice [mm]	Kv value [m³/h]	Pressure range [bar]		Item no. voltage/frequency [V/Hz]		
			DC	AC	024/DC	024/50	230/50
<b>Normally closed (other versions on request)</b>							
<b>Brass body</b>							
G 1/4	3	0.28	0 - 30	0 - 25	178 295	178 296	178 297
	4	0.54	0 - 12	0 - 16	178 299	178 300	178 301
	5	0.73	0 - 6	0 - 10	178 303	178 304	178 305
G 3/8	6	0.95	0 - 3	0 - 6	178 323	178 324	178 325
	8	1.60	0 - 1	0 - 3	178 327	178 328	178 329
G 1/2	8	1.60	0 - 1	0 - 3	178 335	178 336	178 337
	10	1.80	0 - 0.4	0 - 2	178 339	178 340	178 341
<b>Stainless steel 1.4404 (316L)</b>							
G 1/4	3	0.28	0 - 30	0 - 25	178 239	178 240	178 241
	4	0.54	0 - 12	0 - 16	178 243	178 244	178 245
	5	0.73	0 - 6	0 - 10	178 247	178 248	178 249
G 3/8	6	0.95	0 - 3	0 - 6	178 267	178 268	178 269
	8	1.60	0 - 1	0 - 3	178 271	178 272	178 273
G 1/2	8	1.60	0 - 1	0 - 3	178 279	178 280	178 281
	10	1.80	0 - 0.4	0 - 2	178 283	178 284	178 285
	12	2.00	0 - 1.2	0 - 0.2	178 287	178 288	178 289
<b>Normally open (other versions on request)</b>							
<b>Brass body</b>							
G 1/4	3	0.28	0 - 16	0 - 16	211 914	228 487	228 488
	4	0.54	0 - 10	0 - 10	208 623	228 489	228 490
	5	0.73	0 - 8	0 - 8	228 491	228 492	228 493
G 3/8	5	0.73	0 - 8	0 - 8	228 494	228 495	228 496
	6	0.95	0 - 6	0 - 6	228 497	228 498	228 499
	8	1.60	0 - 3	0 - 3	228 500	228 501	228 502
G 1/2	8	1.60	0 - 3	0 - 3	211 916	228 503	228 504
	10	1.80	0 - 2	0 - 2	210 436	219 530	210 438

## Ordering Chart

Port connection [inch]	Orifice [mm]	Kv value [m <sup>3</sup> /h]	Pressure range [bar]		Item no. voltage/frequency [V/Hz]		
			DC	AC	024/DC	024/50	230/50
<b>Stainless steel 1.4404 (316L)</b>							
G 1/4	3	0.28	0 - 16	0 - 16	230 243	230 244	230 245
	4	0.54	0 - 10	0 - 10	230 246	230 247	230 248
	5	0.73	0 - 8	0 - 8	230 249	230 250	230 251
G 3/8	5	0.73	0 - 8	0 - 8	230 252	230 253	230 254
	6	0.95	0 - 6	0 - 6	230 255	230 256	230 257
	8	1.60	0 - 3	0 - 3	230 258	230 259	230 260
G 1/2	8	1.60	0 - 3	0 - 3	230 261	230 262	230 263
	10	1.80	0 - 2	0 - 2	225 248	230 264	230 265
	12	2.00	0 - 1	0 - 1	210 441	230 266	210 321

6027

“Why must medical equipment drown out the breathing of patients?”

**It doesn't have to!** The WhisperValve by Bürkert can finally silence loud clicking noises. The tiny micro valve operates almost silently and with high precision. This makes it ideal for use in the immediate vicinity of the patient – for example in dialysis machines. This little powerhouse is absolutely reliable – and is a quiet achiever. This way doctor and patient can focus on therapy in peace.

**Quiet, lightweight and powerful.  
For medical technology, which is close to people.**



INSPIRING ANSWERS

**Bürkert Fluid Control Systems**

Christian-Bürkert-Straße 13–17

74653 Ingelfingen

Tel.: +49 (0) 7940 10-111

info@burkert.com · www.burkert.com

**bürkert**  
FLUID CONTROL SYSTEMS