

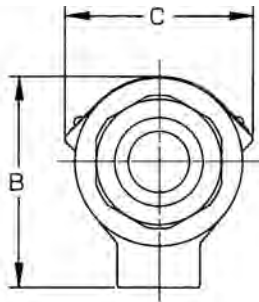
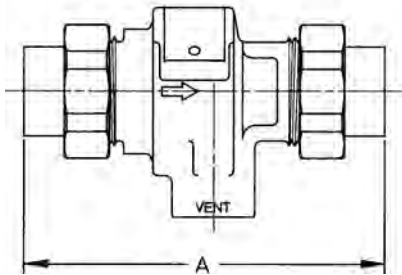
BACKFLOW PREVENTION CATALOG

Dual Check w/Atmospheric Port Backflow Preventers

DCAP SERIES



Sizes 1/2", 3/4"



DUAL CHECK WITH ATMOSPHERIC PORT BACKFLOW PREVENTER

The Apollo DCAP Series Backflow Preventer is designed to protect residential and commercial water supply lines from back-siphonage or back-pressure of non-potable (non-hazardous) substances. It has an intermediate atmospheric vent to insure protection from backflow conditions. It consists of two independently acting and spring-loaded check valves in a corrosion resistant material.

OPERATION

During normal flow operation, the vent valve is closed, and the two check valves are open allowing flow of water through the unit. Each check valve is designed to hold at least 1 psi in the direction of flow. When a back-siphonage condition occurs, both check valves close and the atmospheric vent opens to permit air to enter the intermediate zone. In the event of back-pressure and if the second check valve is prevented from closing tightly, leakage will be vented to the atmosphere through the vent port.

FEATURES

- Corrosion resistant
- Low head loss
- Independently acting check valves
- Ease of repair and installation
- Economical
- Suitable for hot or cold water service
- Durable
- **Lead-Free** option
- Maximum working pressure 175 psig
- ASSE 1012
- CSA B64.3
- Inlet temperature range 33°F-210°F
- 5 year, domestic warranty
- Maximum backflow temperature 250°F

MATERIALS

Part	Material
Body	Bronze (C84400 - LF C89836)
Springs	Stainless Steel
C.V. Seat Discs	EPDM
Seats	Glass-Filled PPO
Spring and Seat Retainer	Glass-Filled PPO
O-Rings	Nitrile/EPDM
Poppets	Glass-Filled PPO

Contact local water authorities for installation/service requirements.

DIMENSIONS

See Page 69 For Flow Curves

Model No.	DCAP12, DCAP34
Factory No.	40-4x33xM, 40-4x44xM
Size	1/2", 3/4"
A	5
B	2-15/16
C	2-5/8
WEIGHTS	lbs.
Unit Weight	1.9

x = connection type

FACTORY CODE

40 [X]	4 X	X - X	X	M	X
	UNION INLET CONNECTION	INLET AND OUTLET SIZE	UNION OUTLET CONNECTION	M	OPTION
40 = Standard 40LF = Lead Free	A = FNPT H = Solder joint 2 = Female BSPP	3 = 1/2" 4 = 3/4"	A = FNPT B = MNPT F = Female BSPP H = Solder joint		C = Canadian (discharge port not threaded)