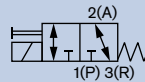


Pivot Operated 3/2-way Universal Solenoid Valve in brass or stainless steel

0330

G 1/4", 0-12 bar max.

- Universal flow function
- Isolating separating diaphragm design
- Handles slightly contaminated fluids with ease
- Manual override as standard
- Long lifetime

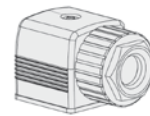


Direct-acting 3/2-way universal function (E) solenoid valves with pivoted armature and isolating diaphragm. This flexible valve series includes many options, various body materials, diaphragm and sealing materials and a range of electrical connections to suit many applications.

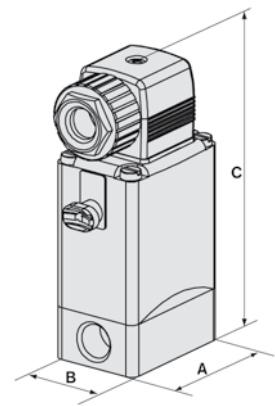
Technical Data

| | |
|-----------------------|---|
| Temperature media | 0 °C to +90 °C |
| Ambient temperature | +55 °C, max. |
| Viscosity | Max. 37 mm ² /s |
| Voltage tolerance | ±10% |
| Duty cycle | 100% continuous rating |
| Body material | Brass or Stainless steel 1.4401 |
| Seal material | FKM (FFKM, NBR and EPDM on request) |
| Coil material | Epoxy (Class H) |
| Power consumption | DC: 8 W, AC: 30 VA (inrush), 15 VA (hold) |
| Protection class | IP65, NEMA 4 (with cable plug) |
| Electrical connection | Cable plug acc. to DIN EN 175301-803, Form A (included) |

Envelope Dimensions [mm] (see datasheet for details)



2508 cable plug Form A included



| Size | A | B | C |
|--------|----|----|-----|
| G 1/4" | 46 | 34 | 100 |

| Orifice [mm] | Response times | | | |
|-----------------|-----------------|-----------------|-----------------|-----------------|
| | AC | | DC | |
| | Opening [ms] | Closing [ms] | Opening [ms] | Closing [ms] |
| 2-4 | 8-15 | 8-15 | 10-20 | 10-20 |

Response times [ms]: Measured at valve outlet at 6 bar and +20 °C
Opening: pressure relief 0 to 90%, closing: pressure relief 100 to 10%

Options

- Electrical position feedback
- Impulse coil
- Range of diaphragm seals to suit aggressive media
- Vacuum ring version
- Cable plug with LED and varistor
- Class 1, Div 2 FM & CSA
- Flange version Type 0331 with manifold mounting
- ATEX approval
- Version with higher purity and tightness (analysis model)

Ordering Chart

| Port connection [inch] | Orifice [mm] | Kv value [m ³ /h] | | Pressure range [bar] | Item no. voltage/frequency [V/Hz] | | |
|--|-----------------|------------------------------|-------|-------------------------|-----------------------------------|----------|----------|
| | | DC | 50 Hz | | 24/DC | 24/50 Hz | 230/50Hz |
| Universal version 3 way configuration | | | | | | | |
| Brass valve body | | | | | | | |
| G 1/4 | 2 | 0.08 | 0.11 | 0 - 12 | 124 922 | 138 316 | 124 925 |
| | 3 | 0.14 | 0.18 | 0 - 8 | 124 927 | 124 928 | 124 930 |
| Stainless steel body | | | | | | | |
| G 1/4 | 2 | 0.08 | 0.11 | 0 - 12 | 124 932 | 124 933 | 124 935 |
| | 3 | 0.14 | 0.18 | 0 - 8 | 124 937 | 124 938 | 124 940 |