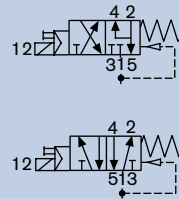


5/2 on 3/2-way Convertible Solenoid Valve for pneumatics, NAMUR version

G 1/4", NAMUR

- High flow rate
- Low power consumption
- High switching reliability
- Manual override as standard
- Corrosion-resistant construction



The solenoid valve, Type 6519 NAMUR, is provided with a NAMUR standard flange for easy, direct mounting to pneumatic actuators. It is manufactured from high-quality manmade materials.

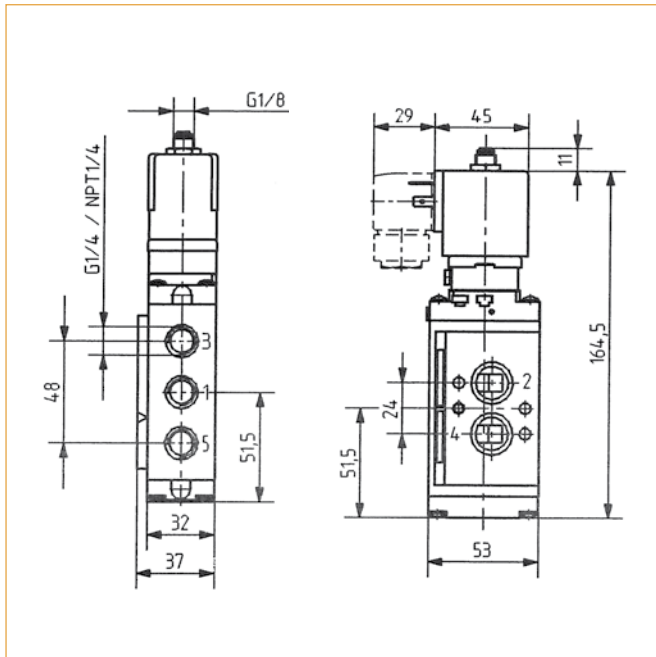
Technical Data

Orifice	DN6.0 mm
Body Materials	
Pilot valve and main valve	Polyamide (PA)
Thread insert material	Brass, nickel-plated or stainless steel
Seal material	NBR and PUR
Pneumatic connection	
Supply ports 1,3,5	Threaded port G 1/4"
Service ports 2 and 4	NAMUR flange
Electrical connection	Tag connector acc. to DIN EN 175301-803 Form A, Type 2508 (not included)
Power consumption	AC 11 VA (inrush), 6 VA (hold), DC 2 W
Protection	IP65 with cable plug
Operating voltage	024/DC, 024/230 V, 50-60 Hz
Voltage tolerance	± 10%
Duty cycle	100 % continuous rating
Ambient temperature	-25 °C to +55 °C
Mediums	Compressed air, nitrogen, instrument air
Environmental conditions	Slightly aggressive, also open air
Response times ¹⁾	
Opening	20 ms
Closing	40 ms

¹⁾ Measured at valve outlet at 6 bar and +20 °C acc. to ISO 12238.

Opening: Pressure rise 0 to 90%,
Closing: Pressure drop 100 to 10%

Envelope Dimensions [mm] (see datasheet for details)



Ordering Chart

Thread insert material	Port (P) [inch]	Orifice [mm]	Qn [l/min]	Pressure range [bar]	Item no. voltage/frequency [V/Hz]		
					024/DC	024/AC	230/AC
Type 6519 NAMUR version, 5/2-way convertible to 3/2-way							
brass nickelplated	G 1/4	6	900	2 - 8	131 421	131 422	131 424
stainless steel ¹⁾	G 1/4	6	900	2 - 8	131 425	131 426	131 428

¹⁾ If the connectors are from stainless steel, the mounting screws will also be from stainless steel