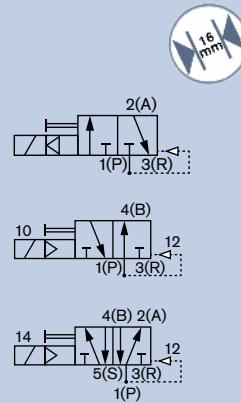


3/2 and 5/2-way Solenoid Valve for pneumatic

6526 / 6527

- Modular valve block with 16.5 mm mounting pitch
- Low power consumption
- Rocker pilot in DC
- Fast response times

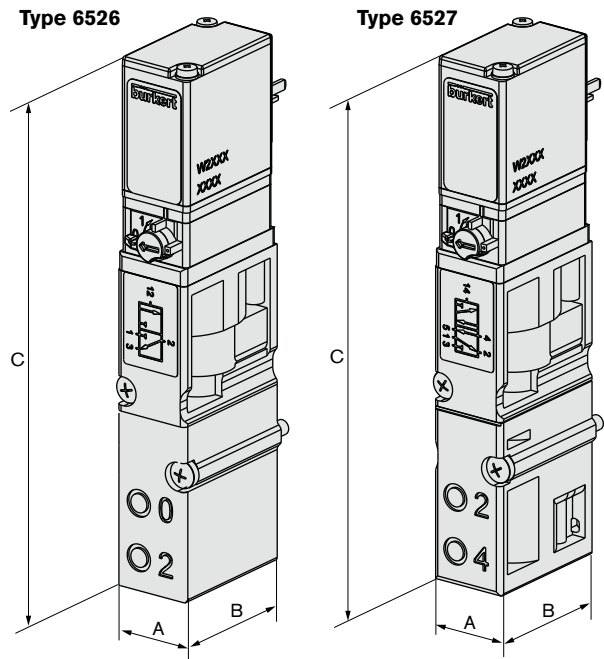


A compact manifold with a pitch of 16.5 mm per station can be put together from the components of Type 6526 / 6527. Type 6526 / 6527 consists of a pilot rocker valve, Type 6106 and a pneumatic seat valve. The rocker principle allows switching of high pressures together with low power consumption and fast response times. All valves are equipped with manual override as a standard.

Technical Data

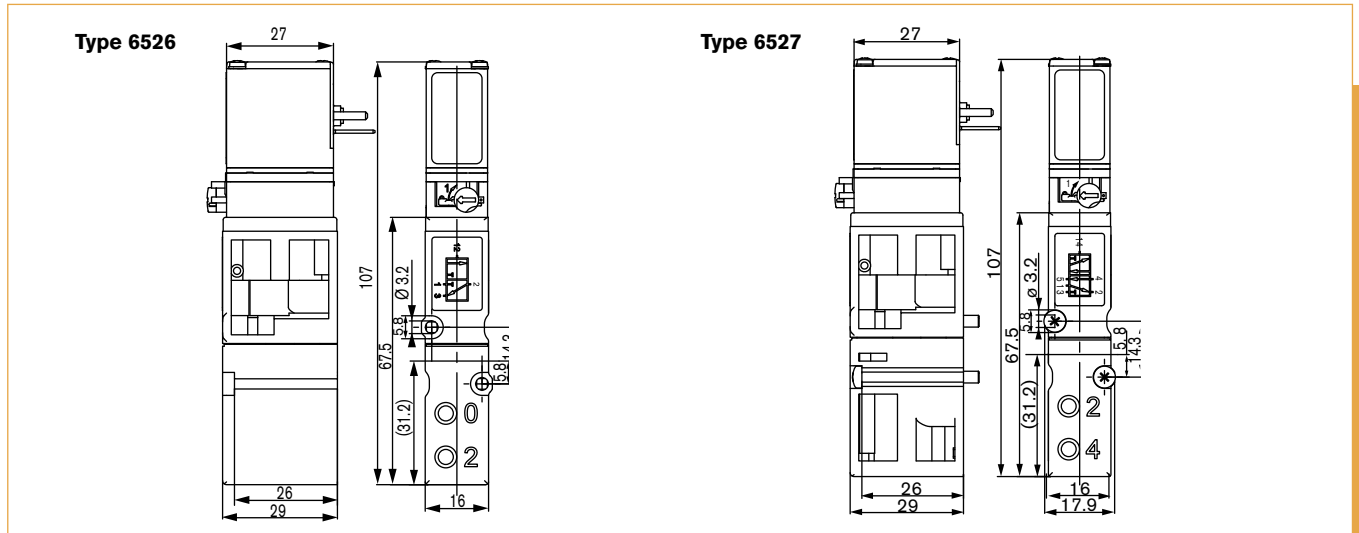
Orifice	DN6.0 mm
Body material	PA (Polyamide)
Seal material	NBR
Media	Lubricated and non-lubricated dry air; neutral gases (10 µm filtering)
Media temperature	-10 °C to +50 °C
Ambient temperature	-10 °C to +55 °C
Manual override	Standard
Port connection	Flange for MP12
Pneumatic module	Type MP12 with G 1/8", Push-in connection Ø 8 mm
Voltage tolerance	±10%
Voltage	24 V DC
Nominal power	2 W, 1 W
Duty cycle	Continuous operation (100% ED)
Electrical connection	Tag connector acc. to DIN EN 175301-803 (previously DIN 43650) for cable plug, Form C (not included)
Protection class	IP65 (with cable plug)
Weight	Type 6526 85 g Type 6527 95 g
Mounting	with 2 screws M3x30
Installation	As required, preferably with actuator upright

Envelope Dimensions [mm] (see datasheet for details)



A	B	C
16	29	107

Envelope Dimensions [mm] (see datasheet for details)



6526 / 6527

Ordering Chart

Circuit function	Orifice [mm]	Qn value air [l/min]	Pressure range [bar]	Power consumption [W]	Response times		Item no. 024 V DC
					Opening [ms]	Closing [ms] ³⁾	
3/2-way solenoid valve without cable plug, Type 6526							
C 3/2-way valve normally closed	6	700	1.0 - 10	2	20	12	156 842 ²⁾
			1.0 - 10	2	20	12	163 028 ¹⁾
			2.0 - 10	2	20	12	156 318 ²⁾
			2.0 - 10	2	20	12	158 944 ¹⁾
			2.0 - 8.0	1	20	12	158 947 ¹⁾
D 3/2-way valve normally open	6	700	1.0 - 10	2	20	12	163 029 ¹⁾
			2.0 - 10	2	12	20	156 320 ²⁾
			2.0 - 10	2	20	12	158 946 ¹⁾

- 1) Electrical connection above manual override.
- 2) "long version": can be mounted together with Type 6527 on a valve island.
- 3) In combination with valve islands the closing time will be approx. 5 ms longer.

Circuit function	Orifice [mm]	Qn value air [l/min]	Pressure range [bar]	Power consumption [W]	Response times		Item no. 024 V DC
					Opening [ms]	Closing [ms] ³⁾	
5/2-way solenoid valve without cable plug, Type 6527							
H 5/2-way valve	6	700	1.0 - 10	2	20	12	156 828
			1.0 - 10	2	20	12	163 030 ¹⁾
			2.0 - 10	2	20	12	156 337
			2.0 - 10	2	20	12	158 942 ¹⁾
			2.0 - 8.0	1	20	17	156 827
			2.0 - 8.0	1	20	12	158 943 ¹⁾

- 1) Electrical connection above manual ride.
 - 2) In combination with valve islands the closing time will be approx. 5 ms longer.
- Flow rate, Qn-value air [l/min]: Measured at +20 °C, 6 bar pressure at valve inlet and 1 bar pressure difference
 Pressure values [bar]: Measured as overpressure to the atmospheric pressure
 Response times [ms]: Measures acc. to ISO 12238

Ordering Chart

Module	Version	Feature	Item no.
Type MP12 pneumatic modules			
Connection module	right	G 3/8"	655 110
		NPT 3/8"	655 112
	left	G 3/8"	655 109
		NPT 3/8"	655 111
Pneumatic basic module 2 valves	push-in connection Ø 8 mm	without check valve	156 617
		with integrated check valve with R and S-channel	156 632
	connection G 1/8"	without check valve	on request
		with integrated check valve with R and S-channel	on request
		connection NPT 1/8"	without check valve
	with integrated check valve with R and S-channel	on request	
Pneumatic basic module 4 valves	push-in connection Ø 8 mm	without check valve	156 656
		with integrated check valve with R and S-channel	156 659
	connection G 1/8"	without check valve	on request
		with integrated check valve with R and S-channel	on request
		connection NPT 1/8"	without check valve
	with integrated check valve with R and S-channel	on request	
Covering plate		for unused valve positions	653 765

6526 / 6527

Ready. Set. Go.

With our new Robolux valve block you are always one step ahead. By combining our established Robolux series with our robust ELEMENT stainless steel actuators, we have created a real winner with prime qualities: internal volume, dead volume and dead legs have been reduced to a minimum, making for easy cleaning and enhancing your plant's productivity. The compact design and small footprint save space, and the high degree of automation will allow you to clear any hurdle in your process. Take your marks!

We make ideas flow.



burkert
FLUID CONTROL SYSTEMS

FLUID CONTROL SYSTEMS

burkert
FLUID CONTROL SYSTEMS