

PROGNOSYS FOR AN-ISE sc, AISE sc, NISE sc

Eliminate last-minute maintenance emergencies.

PROGNOSYS is a predictive diagnostic system that allows you to be proactive in your maintenance, by alerting you to upcoming instrument issues. Know with confidence whether changes in your measurements are due to changes in your instrument or your water.



Measurement Indicator

The measurement indicator monitors the instrument's components and uses that information to alert the user to upcoming instrument needs before measurements become questionable.



Service Indicator

The service indicator tracks the number of days until the instrument will require maintenance or service.



MAINTENANCE REQUIRED



Measurement Indicator

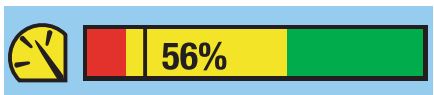
- An electrode has lost physical contact with the sensor
- Remove the yellow cap on the new cartridge
- An ion electrode may be damaged and should be replaced
- An electrode has aged and the cartridge may need to be cleaned or replaced
- Water in the sensor
- Any instrument error



Service Indicator

- 1 day or less remaining until the next maintenance task
- An ion electrode may be damaged and should be replaced
- The temperature difference used to establish the temperature matrix is too large
- The matrix correction is out of range of the sample temperature
- The new cartridge need to be calibrated
- A matrix correction is due

MAINTENANCE PENDING



Measurement Indicator

- The electrodes are beginning to wear
- An electrode may be incurring damage and should be replaced
- A matrix correction is overdue by more than 30 days
- The temperature difference used to establish the temperature matrix correction is too large
- The matrix correction is out of range of the sample temperature
- Any instrument warning



Service Indicator

- 2–14 days remaining until the next maintenance task (user adjustable)
- The RFID could not be read

MAINTENANCE PERFORMANCE



Measurement Indicator

- The electrodes are in good condition
- Cartridge is new (100 %); new cartridge requires calibration (95 %)
- Cartridge age is optimal (100 %); cartridge should be replaced soon (90 %)
- No matrix corrections are due (100 %) or a matrix correction is overdue (76–99%)
- The matrix correction is in range of the sample temperature



Service Indicator

- 7–14 days remaining until the next maintenance task (user adjustable)
- RFID is readable

Many of the parameters and tasks considered for the maintenance indicator will also be displayed through the service indicator if the related instrument components require maintenance soon.