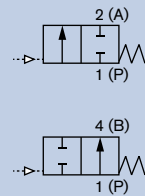


# On-Off Pneumatically Operated 2/2-way Angle Valve for Liquids

## G 1/2" - G 2 1/2"

- Waterhammer-free
- High flow rates
- Self adjusting double packing
- Optical position indicator is standard
- Rotating power head to orient air control connections



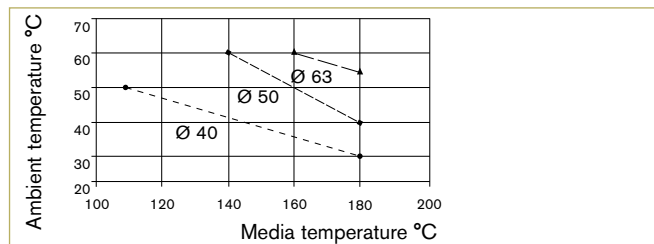
The angle seat valve consists of a pneumatically actuated piston-drive and a 2-way valve body. Depending on the ambient temperature the drive is available in two different materials, PA and PPS. The self reliable gland packing ensures a good seal. The 2/2-way flow valve body made of bronze or stainless steel precision casting allows high flow rates. These durable and robust valves can be retrofitted with a comprehensive range of accessories for position indication, stroke limitation or manual override.

### Technical Data

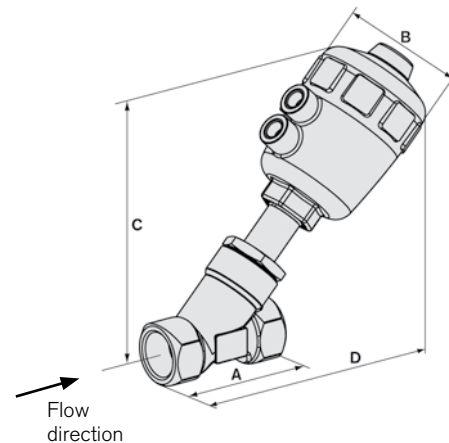
<b>Pressure range</b>	See Ordering Chart
<b>Viscosity</b>	max. 600 mm <sup>2</sup> /s
<b>Stuffing socket</b> (with silicone grease)	PTFE V-Rings with spring compensation
<b>Temperature media</b>	-10 °C to +180 °C
<b>Ambient temperature</b>	
for PA-Actuator <sup>1)</sup>	-10 °C to +60 °C
for PPS-Actuator <sup>1)</sup> Ø 40-80	+5 °C to +140 °C
for PPS-Actuator <sup>1)</sup> Ø 100-125	+5 °C to +90 °C, temporary up to +140 °C
<b>Body material</b>	Gunmetal or stainless steel 316L
<b>Seal material</b>	PTFE
<b>Actuator material</b>	Polyamide or PPS
<b>Control medium</b>	Instrument air at 6 bar
<b>Flow direction</b>	Under seat
<b>Safe position</b>	Normally closed or normally open
<b>Pilot air port</b>	1/4" (Actuator Ø 40 = 1/8")

<sup>1)</sup> **Note:** For PA actuators in the sizes 40, 50 and 63, the combination of max. medium temperature and max. ambient temperature is as shown in the following chart

### Temperature diagram



### Envelope Dimensions [mm] (see datasheet for details)

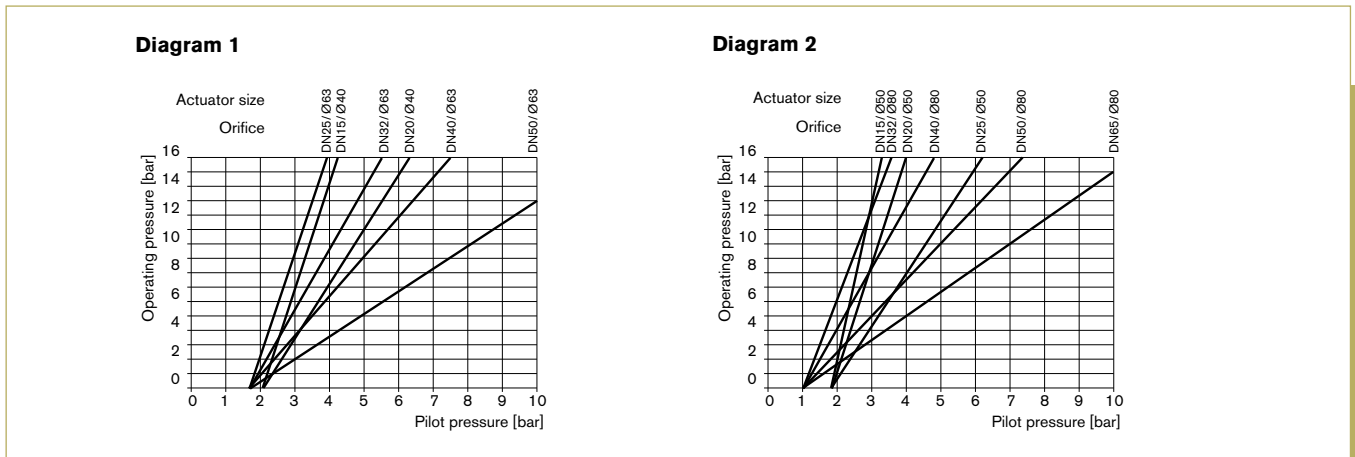


Size	Actuator	A	B	C	D
G 1/2"	40	65	53	115	139
G 1/2"	50	65	64	140	163
G 3/4"	50	75	64	144	171
G 3/4"	63	75	80	171	198
G 1"	50	90	64	152	181
G 1"	63	90	80	177	206
G 1"	80	90	101	198	228
G 1 1/4"	63	110	80	183	219
G 1 1/4"	80	110	101	205	240
G 1 1/2"	63	120	80	188	222
G 1 1/2"	100	120	127	260	295
G 1 1/2"	125	120	158	289	324
G 2"	80	150	101	225	270
G 2"	100	150	127	272	317
G 2"	125	150	158	302	347
G 2 1/2"	80	185	127	239	296
G 2 1/2"	125	185	158	317	374

### Options

- Double acting
- Solenoid pilot valves
- Vacuum version
- Feedback switches
- Cleaned for oxygen service
- Seal material NBR, FKM, EPDM
- GL, SIL approvals
- Stroke limiter

Pilot pressure diagram for normally open and flow direction below seat



Ordering Chart

Port connection [inch]	Orifice [mm]	Actuator size Ø [mm]	Kv value [m³/h]	Pressure range [bar]	Item no. Gunmetal body		Item no. Cast st. st. body	
					PA actuator	PPS actuator	PA actuator	PPS actuator
<b>Normally closed</b>								
G 1/2	13	40	3.7	0 - 15	178 608	178 607	178 606	178 605
		50	4.2	0 - 16	178 684	178 683	178 682	178 681
G 3/4	20	50	8.5	0 - 11	178 680	178 679	178 678	178 677
		63	9	0 - 16	178 666	178 665	178 664	178 663
G 1	25	63	18	0 - 11	178 676	178 675	178 674	178 667
		80	18	0 - 16	186 489	187 565	186 488	187 844
G 1 1/4	32	80	27	0 - 14	178 699	178 698	178 697	178 696
G 1 1/2	40	100	42	0 - 12.5	185 072	187 829	185 073	235 380
		125	42	0 - 16	186 487	-	187 840	-
G 2	50	100	55	0 - 7.2	001 134	002 170	001 140	001 239
		125	55	0 - 10	001 593	002 171	001 601	002 162
G 2 1/2	65	125	90	0 - 5.2	001 368	002 172	001 373	001 703
<b>Normally open</b>								
G 1/2	13	40	3.8	0 - 16	178 601	178 602	178 603	178 604
		50	4.2	0 - 16	178 691	178 690	178 689	178 688
G 3/4	20	50	8.5	0 - 16	178 687	179 020	178 686	178 685
G 1	25	50	10	0 - 16	178 850	178 849	178 848	178 847
G 1 1/4	32	63	25	0 - 16	178 845	178 853	178 852	178 851
G 1 1/2	40	63	35	0 - 16	178 864	178 863	178 862	178 861
G 2	50	80	49	0 - 16	001 595	002 180	001 603	002 164
G 2 1/2	65	80	77	0 - 16	001 372	002 181	001 377	001 710