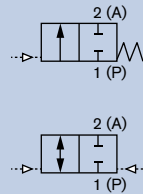


2/2-way Ball Valve with pneumatic rotary actuator, plastic body

- Radially expandable body
- Pneumatic actuator in compact model
- Optical position indicator
- Safe blocked union nuts with Dual Block® Technology ¹⁾



The complete unit of Type 2658 consists of a pneumatic rotary actuator and a ball valve body from plastic. The connection between the ball valve and the actuator is made via a standard interface (flange connection). The rotary movement in the actuator is produced by a linear piston with angled thread coupling. The rotary actuator moves the ball valve through 90° and thereby opens or closes the port cross-section. The compact pneumatically-operated ball valve can be used for a wide range of applications and medium. The pneumatic rotary actuator can also be used for other purposes.

Special feature

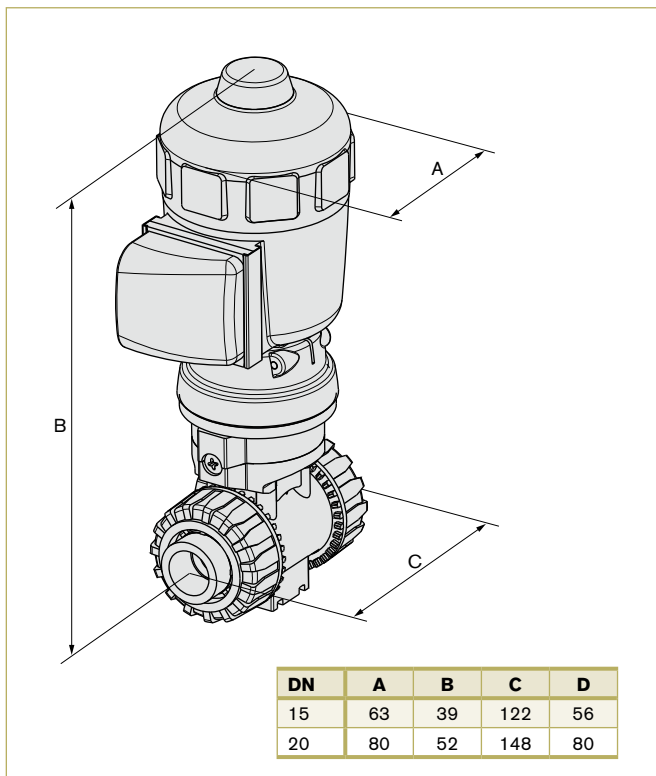
The ball valves are equipped with the so-called Dual Block® Technology. This system serves as a safety device for the union nuts. It prevents them separating during operation.

Technical Data

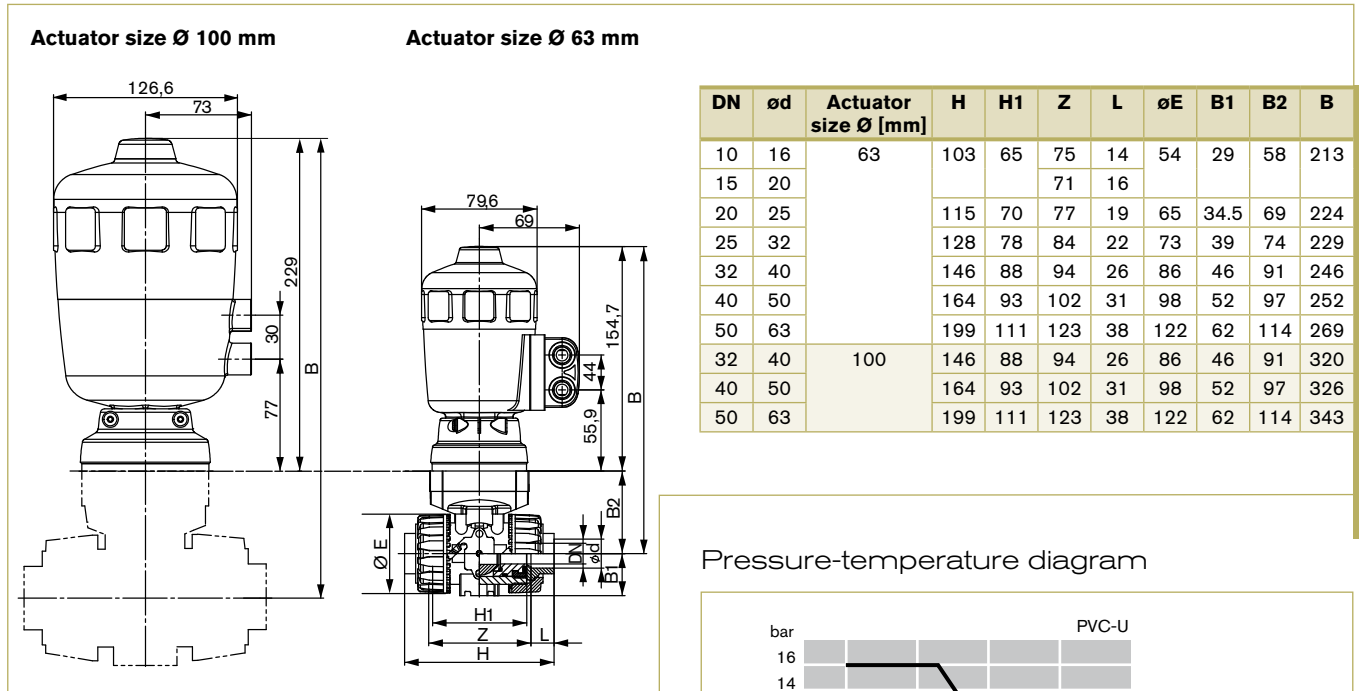
Orifice	DN10-50
Body material	PVC-U (PP, PVDF, PVC-C, ABS on request)
Actuator material	PA (polyamide, glass-fibre reinforced)
Pilot air ports material	Stainless steel
Seal material	
O-rings	EPDM, FKM
Ball seal	PTFE
Medium	Gaseous and liquid medium, which do not attack the body and seal materials
Medium temperature	
PVC body	0 to +60° C
Ambient temperature	-10 to +60 °C
Port connections	
PVC-U	True union
(PP, PVDF on request)	Fusion spigot
Control medium	Neutral gases, air
Pilot pressure	
Single-acting actuator	5 - 10 bar (Ø 63 mm) 5 - 6 bar (Ø 100 mm)
Double-acting actuator	2 - 10 bar (Ø 63 mm) 2 - 6 bar (Ø 100 mm)
Rotation	90° ±3°
Rotation time for 90°	1 to 3,5 s (depending on load and pilot pressure)
Connection between actuator and ball valve	Flange acc. to ISO 5211 and DIN 3337
Installation	As required, preferably with actuator upright

¹⁾Dual Block® Technology is a registered trademark of FIP - Formatura Iniezione Polimeri p.p.A

Envelope Dimensions [mm] (see datasheet for details)

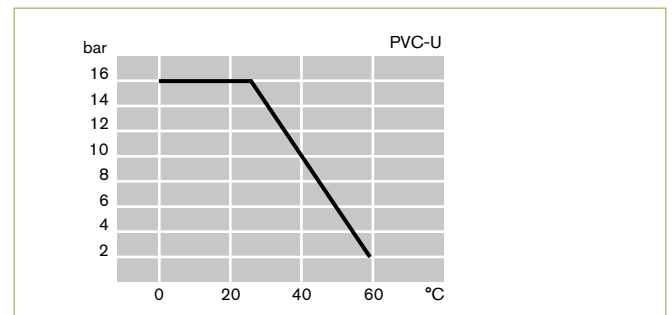


Envelope Dimensions [mm] (see datasheet for details)



2658

Pressure-temperature diagram



Ordering Chart

Control function	Orifice [mm]	Port connection [mm]	Actuator size Ø [mm]	Kv value water [m³/h]	Pressure range [bar]	Item no. Seal material EPDM	Item no. Seal material FKM
Ball valves							
PVC body, true union connection							
A 2/2-way, normally closed	10	16	63	4.8	0 - 16	178 898	178 987
	15	20	63	12	0 - 16	178 944	178 986
	20	25	63	23	0 - 16	178 949	178 985
	25	32	63	46	0 - 16	178 955	178 983
	32	40	100	66	0 - 16	178 960	178 982
	40	50	100	105	0 - 16	178 964	178 980
	50	63	100	204	0 - 10	178 966	178 979
I 2/2-way, double-acting	10	16	63	4.8	0 - 16	176 491	176 505
	15	20	63	12	0 - 16	176 492	176 506
	20	25	63	23	0 - 16	176 493	176 507
	25	32	63	46	0 - 16	176 494	176 508
	32	40	63	66	0 - 16	176 495	176 509
	40	50	63	105	0 - 16	176 496	176 510
	50	63	100	204	0 - 10	176 497	176 511

Flow rate: Kv value water [m³/h]: Measured at +20 °C, 1 bar pressure at valve inlet and free outlet.

Pressure values [bar]: Overpressure to the atmospheric pressure.

Accessories for pilot valve

Valve for actuator size Ø [mm]	Type	Pressure inlet P (valve body)	Service port A (banjo bolt)	Orifice [mm]	Kv value air [l/min]	Pressure range [bar]	Electrical connection	Power consumption [W]	Item no. voltage/frequency [V/Hz]	
									024/DC	230/50
63	6012P	Tube fitting Ø 6 mm	G 1/4"	1-Feb	48	0 - 10	Form B	4	552 283	552 286
63-100	6014P	G 1/4"	G 1/4"	2	120	0 - 10	Form A	8	424 103	424 107

Cable plug Type 2507, Form B or Type 2508, Form A	Item no.
Type 2507, Form B Industrial standard 0 to 250 V without circuitry (Type 6012 P)	423 845
Type 2508, Form A acc. DIN EN 175301-803, 0 to 250 V without circuitry (Type 6014 P, Type 0331 P)	008 376

For further accessories see datasheet Type 2XXX for the full accessories programme.



It's all in the mix –
heat treatment
made simple

bürkert
FLUID CONTROL SYSTEMS

Liquid and Mass Flow Controllers from Bürkert.

Life is complicated enough. So make it simpler – with the new reliable solutions for surface technology from Bürkert – designed with the needs of the surface coating industry in mind, featuring a robust design, high repeatability and reaction speed as well as numerous fieldbus connection options. A complex measuring and control task can therefore become simplicity itself in a matter of seconds. Perfect for fast, reliable production processes and your peace of mind.

Bürkert's Mass and Liquid Flow Controllers now ensure even more reliable control of liquids such as methanol and gases like ammonia, making them the perfect solution for a large number of industrial applications such as heat treatment.

Thanks to our innovative sensor and valve technology, we at Bürkert provide robust, precise and tailored solutions for surface technology. Two stars in our system: The MFC 8711 and LFC 8719. They measure and control gases or liquids in less than 300ms, even at the lowest operating pressures.



Want to know more? Just call: +49 (0)79 40 10-0

www.burkert.com