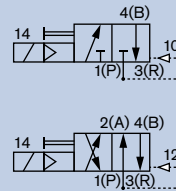


3/2- and 4/2-way NAMUR Solenoid Valve for pneumatic

5470 NAMUR
5470 NAMUR Ex i

DN4 mm

- Extreme switching reliability
- Plastic version
- Reduced power consumption
- With manual override



The NAMUR solenoid valves, Type 5470 NAMUR and Type 5470 NAMUR Ex i, are equipped with a NAMUR standard flange for easy direct mounting on process actuator. The devices of this series are made from high quality plastics.

Technical data

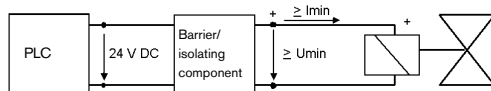
Pressure range	2-10 bar Standard, 2-8 bar Ex i
Media temperature	-10 °C to +50 °C
Ambient temperature	+55 °C max.
Body material	Polyamide
Connections	G 1/4" (Brass nickel-plated for Connection 1 and 3)
Orifice	4 mm
Seal material	NBR
Voltage tolerance	±10%
Duty cycle	100% continuous rating
Electrical connection	Tag connector according to DIN EN 175301 (previously DIN 43650) for cable plug Form C (not included)
Type of protection	IP65 (NEMA 4) with Cable Plug
Response times ¹⁾	
Standard	Opening 50 ms, Closing 12 ms
Ex i	Opening 60 ms, Closing 50 ms

¹⁾ Measured at valve outlet at 6 bar and +20°C acc. to ISO 12238.

Opening: Pressure rise 0 to 90%,
Closing: Pressure drop 100 to 10%

Note

The units may only be used in explosive atmospheres in the manner approved by the Federal Institute of Physics and Technology (PTB), i.e., the permissible maximum electrical values must be complied with. Suitable barriers and isolating modules are available for this.

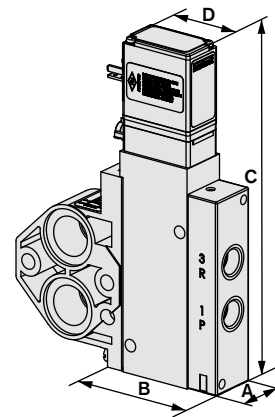


The valve is intended for operation on 24V DC outputs via the intermediate switching of a corresponding intrinsically-safe operating resource (isolating module or barrier). If required, request the "Recommended Barrier and Isolating Module" data sheet.

Options

- Without manual override
- SIL certificate

Dimensions [mm] (see datasheet for further Details)



Size	A	B	C	D
G 1/4"	18	55	115.3	37

Electrical data - coil AC10 Ex i

Type of protection	II 2G Ex ia IIC T6 PTB 01 ATEX 2175	
Functional values for valve switching function	at +20 °C	at +55 °C
Minimum switching current	29 mA	29 mA
Nominal resistance of the coil	320 Ω	360 Ω
Minimum terminal voltage	9.3 V	10.4 V
Permissible maximum values acc. to certificate of conformity		
U _i	35 V	
I _i	0.9 A	
P _i /T _{umg. max.}	0.9 W/+55 °C	

Ordering chart

Orifice [mm]	QNn Value air [l/min]	Pressure [bar]	Port connection	Item no.			Ex i
				024/DC [2 W]	110-120/DC [3 W]	220-240/DC [3 W]	
3/2-way with NAMUR flange, WWC (pilot operated, output 4 normally vented, output 2 recirculated)							
4.0	300	2 - 10 (at Ex i 2 - 8)	G 1/8" (Connections 1 and 3)	136 761	136 762	136 763	139 224
			Push-in connection Ø 6 mm (Connections 1 and 3)	136 764	–	136 766	139 402
4/2-way with NAMUR flange, WWG (pilot operated, output 4 normally pressurized, output 2 vented)							
4.0	300	2 - 10 (at Ex i 2 - 8)	G 1/8" (Connections 1 and 3)	136 767	136 768	136 769	139 407
			Push-in connection Ø 6 mm (Connections 1 and 3)	136 770	136 771	136 772	139 408
			G 1/8" (Connections 1 and 3), NAMUR flange with one-way flow restrictor (Connections 2 and 4)	136 773	136 774	136 775	–

5470 NAMUR
5470 NAMUR Ex i