

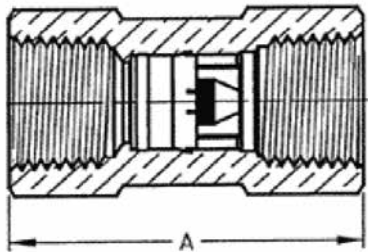
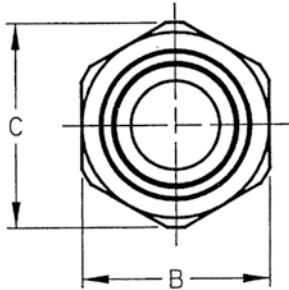
# CHECK VALVES

## Mini Check Valves

### 61-700 SERIES (MODEL CV)



**61-700**  
Female x Female Pipe Thread  
1/4" through 1"



The Apollo Model CV check valve is ideally suited for cold water, and air applications for prevention of reverse flow. The modular check cartridge provides superior leak-tight performance with low pressure loss. It is rated at 230 PSIG with a maximum temperature of 200°F.

#### FEATURES

- 0.5 psi cracking pressure
- Acetyl silicone check with:
  - Silicone rubber seat (1/4 & 3/8)
  - Nitrile seat (1/2-1)

#### MATERIALS OF CONSTRUCTION

Body	Brass, ASTM B16
Check Module	Acetal/Brass/Silicone/Buna-N
Spring	Stainless Steel 302

#### Dimensional Specifications

Item Number	Size	A	B	C	Wt./100
61-701-01	1/4"	1.72	0.81	0.92	22
61-702-01	3/8"	1.79	0.93	1.05	29
61-703-01	1/2"	2.02	1.06	1.17	38
61-704-01	3/4"	2.50	1.25	1.40	54
61-705-01	1"	2.95	1.62	1.76	110

Flow Rate (Cv)	
GPM=gallons per minute at 1 psi pressure differential	
Size	GPM
1/4"	0.78
3/8"	1.81
1/2"	6.00
3/4"	11.50
1"	17.50

**NOTE:** Not recommended for use with reciprocating pumps and similar applications. Low flows may result in undesirable noise and premature valve failure. See page 6 for additional precautions.