

ACTUATORS AND CONTROLS

Solenoids

DIRECT MOUNTED NAMUR SOLENOID VALVES

SOLENOID GENERAL SPECIFICATIONS

TEMPERATURE LIMITS:

Media: 0°F to +180°F.

Ambient:

1: NEMA 4, 4X 0°F to +180°F.

2: NEMA 4-4X-7-9, 0°F to +125°F.

COIL RATINGS:

1: NEMA 4, 4X: Continuous duty molded Class H insulation.

2: NEMA 4-4X-7-9: Continuous duty molded Class F

COIL VOLTAGES AVAILABLE:

Coil Voltage Variation: +/-10% of Nominal

1: 120 VAC-60 Hz/110 VAC-50 Hz.

2: 240 VAC-60 Hz/220 VAC-50 Hz/120 VDC.

3: 48 VAC-60 Hz/44 VAC-50 Hz/24 VDC.

4: 24 VAC-60 Hz/22 VAC-50 Hz/12 VDC.

POWER CONSUMPTION:

6 Watts

MATERIALS:

Valve Body=Aluminum, anodized.

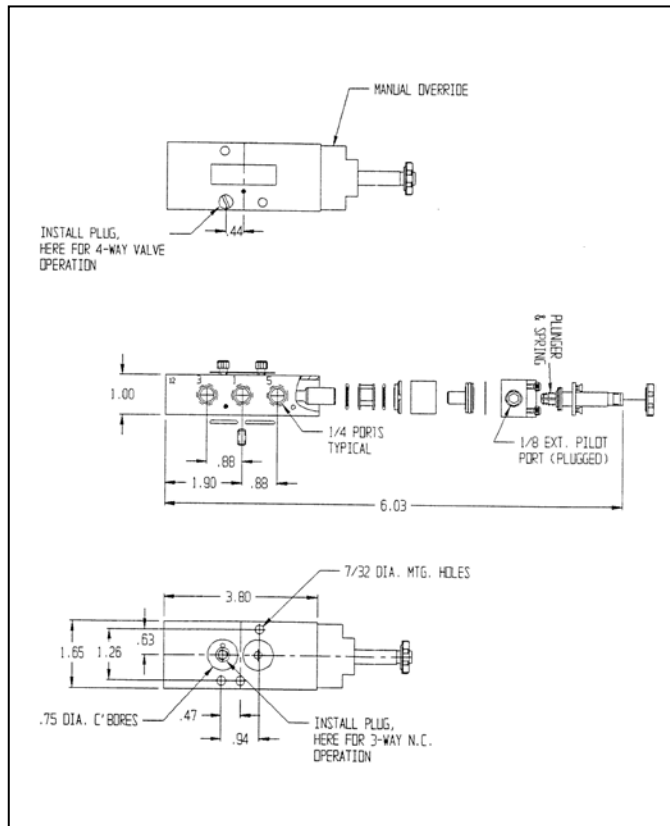
Fasteners=Stainless Steel

Seals & O-Rings=Nitrile.

CV FLOW RATE:

1.8

NEMA 4-4X UL, CSA, PTB&CE



NEMA 4, 4X, 7 & 9 UL, CSA, PTB&CE

