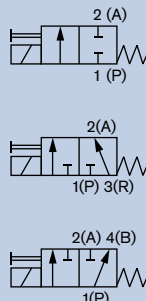


2/2 or 3/2-way Solenoid Valve for aggressive medium

0121

G 3/8"

- Pivoted armature valve with manual override
- Direct-acting with separating diaphragm
- Different circuit functions
- Suitable for aggressive medium
- Body material plastic
- Threaded connection

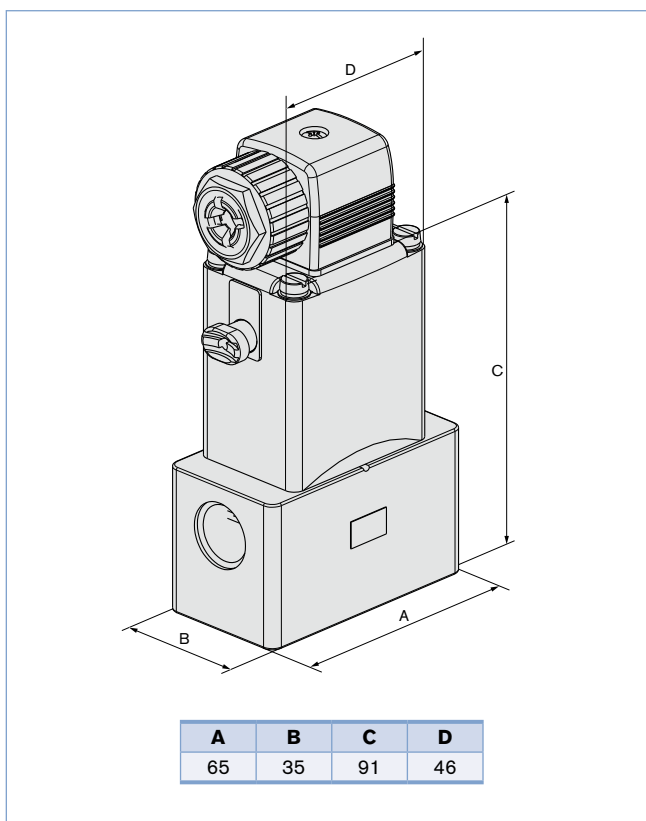


Type 0121 is a high quality, direct-acting 2/2 or 3/2 pivoted armature solenoid valve that can be used in a wide range of applications for opening, closing, dosing, mixing and distribution. The separation between the magnetic system and the medium chamber consists of an intermediate separating diaphragm system.

Technical Data

Orifice	DN4.0-8.0 mm
Body material	PTFE, (PP, PVDF, Stainless steel 1.4401 on request) PVC (resistant acc. DIN 8062, 8061)
Coil material	Epoxy
Coil insulation class	H
Seal material, medium	FKM, FFKM, (EPDM on request)
FKM	Oxidizing acids and substances, oils, salt solutions, exhaust gas, vacuum
FFKM	Resistant to neutral and aggressive liquids and gases, see Bürkert chemical resistance chart
Medium temperature	
Body + seal (Material combination)	
PVC + FKM	-10 °C to +50 °C
PTFE+ FKM	-10 °C to +90 °C
PTFE + FFKM	-10 °C to +90 °C
Ambient temperature	Max. +50 °C
Viscosity	Max. 37 mm ² /s
Voltage tolerance	±10%
Duty cycle	
Continuous operation	100% stainless steel body and for universal current (UC)
Intermittent operation	with PVC body 10% (10 min) with PP-, PTFE- and PVDF body 40% (10 min)
Electrical connection	Cable plug (included) Tag connector acc. to DIN EN 175301-803 Form A Exceptions see Index under Ordering chart
Protection class	IP 65 with cable or cable plug
Installation	as required, preferably with actuator upright

Envelope Dimensions [mm] (see datasheet for details)



Options

- ATEX version
- Optical or electrical position feedback

Inrush		Power consumption				Response times	
AC [VA]	UC [W]	AC [VA/W]	UC [W]	Hold	DC [W]	Opening [ms]	Closing [ms]
30	40	15/8	3	DC cold [W]	8	15-20	15-20
				11-12			

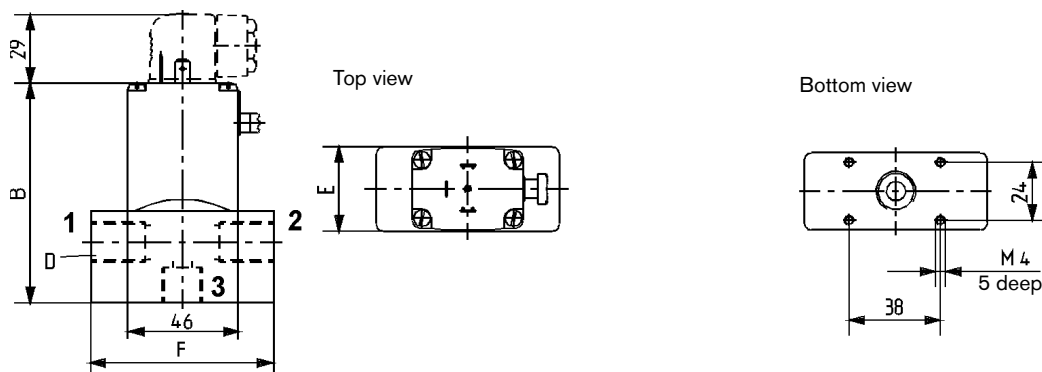
Response times [ms]: Measured at valve outlet at 6 bar and +20 °C
Opening: Pressure build-up 0 to 90%, *Closing:* pressure relief 100 to 10%

Ordering Chart

Circuit function	Port connection [inch]	Orifice [mm]	Kv value water [m³/h]	Pressure range [bar]	Body material	Seal material	Voltage/frequency [V/Hz]	Item no.			
Valve with plastic body, manual override and cable plug (UC with silicon cable, please see footnote)											
A 2/2-way valve normally closed	G 3/8	4	0.3	0 - 2	PVC	FKM	024/DC	049 654			
				0 - 4	PVC	FKM	024/50	048 940			
							230/50	047 859			
				0 - 2	PTFE	FFKM	024/DC	151 733			
							024/UC	130 502			
				G 3/8	6	0.6	0 - 1	PVC	FKM	024/DC	048 749
	0 - 2	PVC	FKM				024/50	049 348			
							230/50	047 810			
	G 3/8	8	1				0 - 1	PVC	FKM	024/UC	048 697
										024/50	052 800
										230/50	052 302
E 3/2-way mixer valve	G 3/8	4	0.3	0 - 2	PTFE	FFKM	024/UC	130 933			
							230/50	130 934			
F 3/2-way distributor valve	G 3/8	6	0.6	0 - 1	PVC	FKM	024/DC	049 533			
				0 - 2	PVC	FKM	024/50	052 181			
							230/50	047 916			

* With 1 m silicone cable

Envelope Dimensions [mm] (see datasheet for details)



Body material	D	B	E	F
PTFE and PVC	G 3/8"	91	35	65
Possible port configurations				
Circuit function	1	2	3	
A	P	-	A	
E	P1	P2	A	
F	A	B	P	