

Micro Dosing Unit

7615

- Diaphragm Pump
- Self priming
- Precision Dosing
- Pumps in both Directions
- Integrated Electronics, easy to use

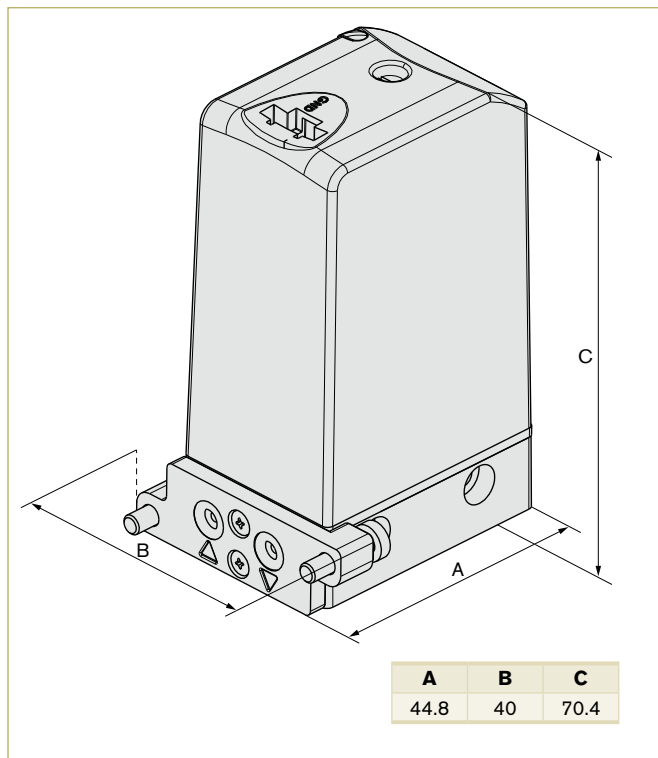


Bürkert's Micro Dosing Unit has been designed for precise dosing applications in the microliter range. It combines high dosing accuracy and precision with excellent chemical inertness. The unit is comprised of three valves which can be opened simultaneously for flushing. Active inlet and outlet valves enable the device to pump liquid in two directions. This feature can be used to mix fluids inside a tube or channel or to constantly keep them in motion. Even low ambient temperatures and dry runs are no problem: the integrated heating function heats up the valves and the media, and the unit comes along with dry running capabilities.

Technical Data

Body Material	PEEK
Seal Material	FFKM; EPDM on request
Fluids	Neutral and aggressive liquids (see Chemical Resistance Chart)
Fluid Temperatures	+15 to 60 °C (FFKM) +5 to 60 °C (EPDM) ¹⁾
Ambient Temperature	+10 to +55 °C ¹⁾
Dosing Quantity	5 µl/Hub; max. 8 ml/min in both directions
Pump Frequency (Frequency Mode)	5 Hz (Standard) 10 Hz; 25 Hz; 40 Hz
Length of Voltage Impulse (Impulse Mode)	> 120 ms
Accuracy	< ± 2% ²⁾
Max. Outlet Pressure	1.0 bar ³⁾
Max. Suction Lift	> 2 m (dry); > 4 m (wet)
Duty Cycle	100%
Voltage	12 V/DC, 24 V/DC
Voltage Tolerance	± 10%
Power Consumption	11 W (short term); 5 W
Electrical Connection	4-pin Molex-Plug (Molex no. 50-57-9404) (not included)
Installation	variable, unit with two holes for M3 fixing screws
Fluid Connection	Flange, UNF 1/4-28 internal thread
Protection class	IP40
Lifetime	ca. 20 Mio cycles (at 20 °C; 10 Hz; water)
Dimensions (L x W x H)	50 x 28.5 x 70 mm (UNF 1/4-28) 44 x 39.5 x 70 mm (Flange)
Max. Viscosity	< 250 mm ² /s
Weight	ca. 120 g

Dimensions [mm] Flange version



¹⁾ For lower temperatures the unit can be electrically preheated (heating mode)

²⁾ At 20 °C; 5 Hz; Medium water and without back pressure.

³⁾ Overpressure above atmospheric pressure

Ordering chart

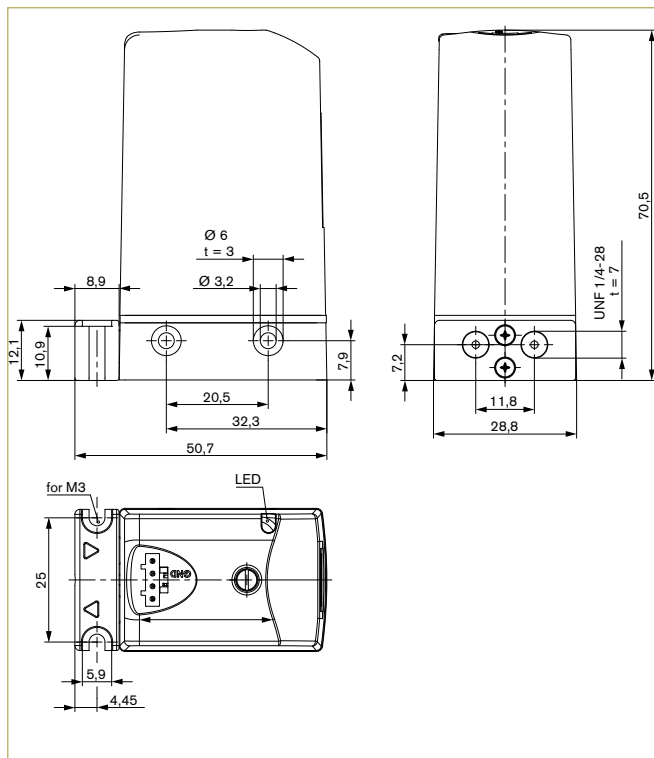
Version	Voltage [V/Hz]	Connection	Seal material	Function mode	Item no.
Standard	024/DC	Sub-base	FFKM	5 Hz (Frequency mode)	238 190
Standard	024/DC	UNF 1/4-28	FFKM	5 Hz	215 793
Standard	024/DC	Sub-base	FFKM / EPDM	5 Hz	238 193
Standard	024/DC	UNF 1/4-28	FFKM / EPDM	5 Hz	238 194
Standard	012/DC	UNF 1/4-28	FFKM / EPDM	5 Hz	238 195

7615

Accessories

Version	Voltage [V/Hz]	Item no.
Leads 500 mm with Molex 4-pin connector	12 - 24	683 613

Dimensions [mm] UNF-Version



Dimensions [mm] Flange version

