

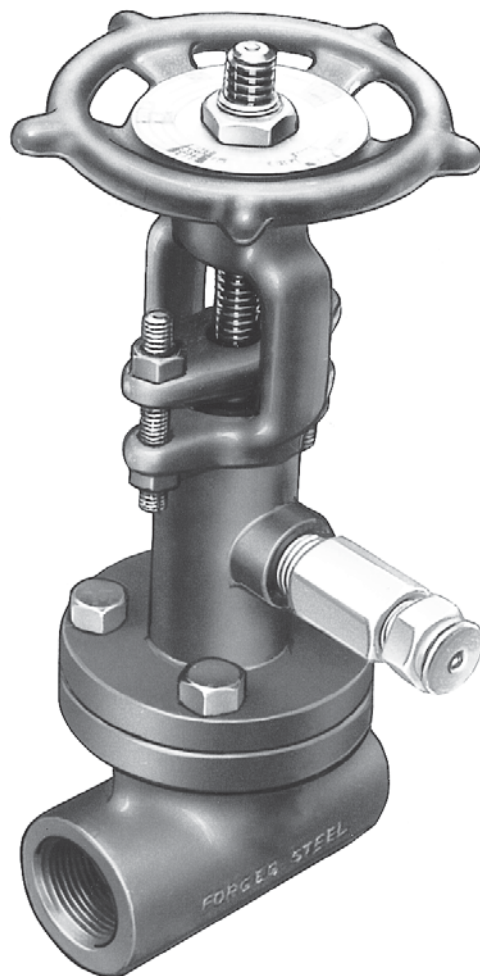


# *CONNECTION BULLETIN*

## *Vogt Valves*

Emission Reduction  
Gate Valve and Retrofit Bonnet Assembly

*FCD VVABR1002-00 – 09/04 (Replaces CB-02)*



*Experience In Motion*

# Emission Reduction: Gate Valve and Retrofit Bonnet Assembly

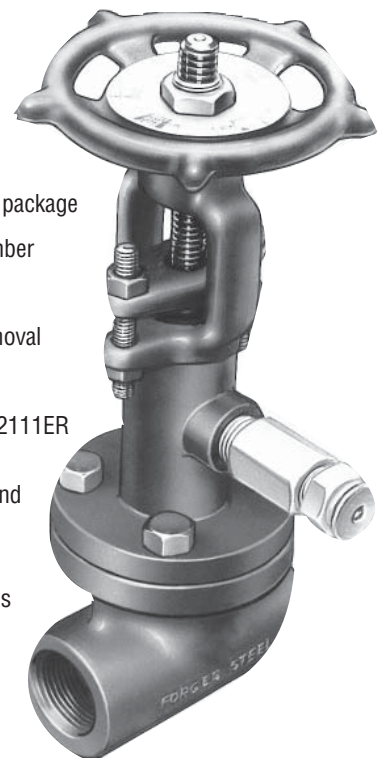
## Forged Gate Valves for Emission Reduction

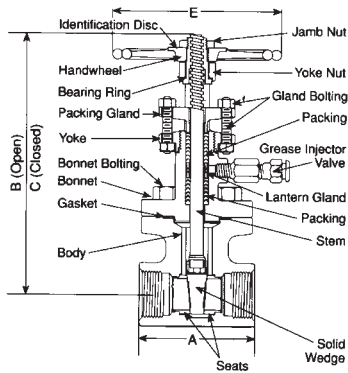
Features include:

- Lower-cost alternative for emissions reduction
- Available in gate valve or retrofit bonnet assembly package
- Reduces fugitive emissions through packing chamber
- Reduces tight stem/packing friction drag
- “ER” Bonnet retrofit of existing valves without removal from line

The Class 800 Gate Valve Series 12111ER and SW12111ER utilizes the proven efficiency of two sets of flexible graphite valve packing, separated by a lantern ring and equipped with a grease injector for the injection of a compatible sealant between the sets of packing. The resultant seal dramatically reduces fugitive emissions through the most vulnerable leak path of a valve. Maintenance of this seal is easily accomplished by replenishing the grease sealant in the packing chamber through the grease injector.

Flowserve Vogt Valves makes this Emissions Reduction offering available in the form of threaded and socket weld end gate valves and retrofit bonnet assembly. These bonnet assemblies can be used for field conversion of existing in-line Vogt Class 150, 300, 600 and 800 compact design bolted bonnet gate valves (Sizes ½”-2”).





### Conventional Port

1975 psi @ 100°F\*  
 Class 800 Sizes ½–2  
 Threaded Series 12111ER  
 Socket Weld Series SW 12111ER  
 A105 Body/Bonnet  
 13% Cr. Trim; Seats: HF

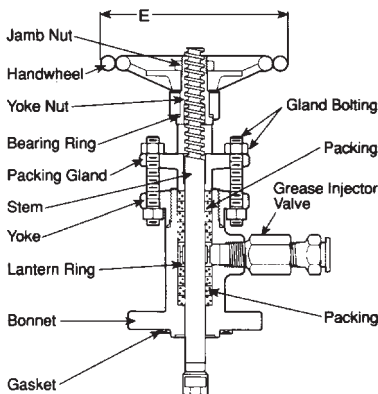
- Round Bolted Bonnet
- Spiral Wound Gasket
- Outside Screw and Yoke
- Bolted Gland
- Double Packing
- Lantern Ring
- Sealant Injector
- Solid Wedge
- Hard Faced Seats
- API 602
- ASME B16.34

Valve Size	½	¾	1	1¼	1½	2
Weight (lb.)	5.9	5.8	9.8	17.7	17.6	23.0
A End to End (in.)	3.38	3.38	4.00	4.75	4.75	5.25
B Open (in.)	8.16	8.16	10.28	12.12	12.12	13.38
C Closed (in.)	7.56	7.56	9.36	10.72	10.72	11.69
D Seat Dia. (in.)	.50	.50	.75	1.25	1.25	1.50
E Handwheel Dia. (in.)	4.00	4.00	4.75	5.75	5.75	7.00
C <sub>v</sub> Factor	9.6	9.7	20.3	80.5	91.6	117.6

\*Service temperature will be limited by sealant manufacturer's recommendation.

**Also available:** Emissions Reduction Retrofit Bonnet Assembly Packages for Field Retrofitting of Vogt Series 353, 363, 373, 12111, SW 12111, 12161 and SW 12161 in ½"–2" Valve Sizes.

The Retrofit Bonnet Assembly Packages can be easily installed on most existing in-line Vogt Compact Design Gate Valves in Classes 150, 300, 600 and 800 of A105 bolted bonnet design with 13% Cr. trim. Specify the desired Retrofit Bonnet Assembly Package for the valve size and series you intend to convert to Emissions Reduction design.



Valve Size	For Vogt Valve Series	Retrofit Bonnet Assembly Package	E (in.)
½, ¾	353, 363, 373, 12111, SW12111, 12161, SW12161	41000 04	4.00
1	353, 363, 373, 12111, SW12111, 12161, SW12161	41000 06	4.75
1¼, 1½	353, 363, 373, 12111, SW12111, 12161, SW12161	41000 08	5.75
2	353, 363, 373, 12111, SW12111, 12161, SW12161	41000 09	7.00

Write for the Flowserve Vogt Valves installation procedure covering instructions for proper field retrofit to Emissions Reduction valve designs.



**United States**  
Flowserve Corp.  
Flow Control  
Flowserve Vogt Valves  
1511 Jefferson Street  
Sulphur Springs, TX 75482 USA  
Telephone: 903-885-3151  
Fax: 903-439-3386

FCD VVABR1002-00 Printed in USA. (Replaces CB-02)

***To find your local Flowserve representative:***

For more information about Flowserve Corporation, visit  
[www.flowserve.com](http://www.flowserve.com) or call USA 1 800 225 6989

Flowserve Corporation has established industry leadership in the design and manufacture of its products. When properly selected, this Flowserve product is designed to perform its intended function safely during its useful life. However, the purchaser or user of Flowserve products should be aware that Flowserve products might be used in numerous applications under a wide variety of industrial service conditions. Although Flowserve can (and often does) provide general guidelines, it cannot provide specific data and warnings for all possible applications. The purchaser/user must therefore assume the ultimate responsibility for the proper sizing and selection, installation, operation, and maintenance of Flowserve products. The purchaser/user should read and understand the Installation Operation Maintenance (IOM) instructions included with the product, and train its employees and contractors in the safe use of Flowserve products in connection with the specific application.

While the information and specifications contained in this literature are believed to be accurate, they are supplied for informative purposes only and should not be considered certified or as a guarantee of satisfactory results by reliance thereon. Nothing contained herein is to be construed as a warranty or guarantee, express or implied, regarding any matter with respect to this product. Because Flowserve is continually improving and upgrading its product design, the specifications, dimensions and information contained herein are subject to change without notice. Should any question arise concerning these provisions, the purchaser/user should contact Flowserve Corporation at any one of its worldwide operations or offices.

© 2004 Flowserve Corporation, Irving, Texas, USA. Flowserve is a registered trademark of Flowserve Corporation.