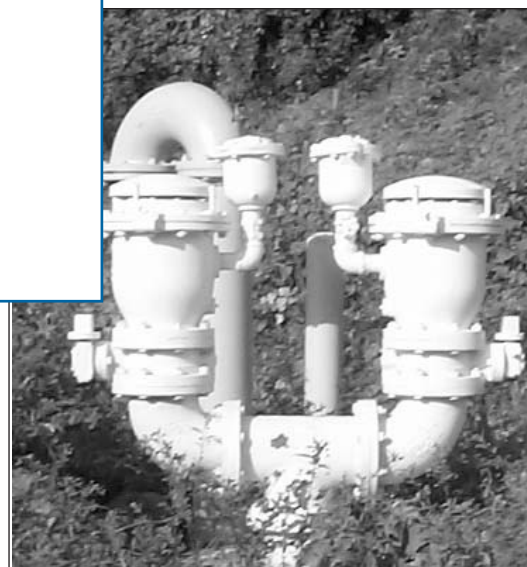
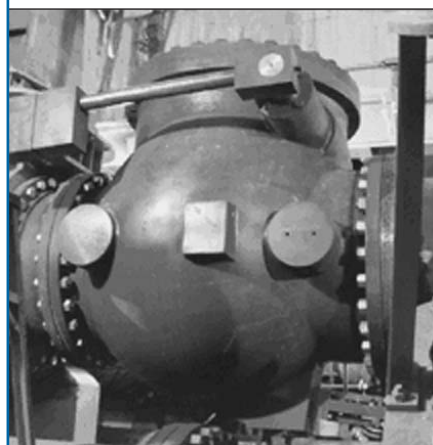




# Overview of Air Release, Check and Butterfly Valves



## CRISPIN MULTIPLEX MANUFACTURING COMPANY

600 Fowler Avenue,  
Berwick, PA 18603  
(800) 247-8258  
Tel. (570) 752-4524  
Fax (570) 752-4962  
[www.crispinvalve.com](http://www.crispinvalve.com)  
[sales@crispinvalve.com](mailto:sales@crispinvalve.com)



# VALVE OVERVIEW

All Crispin Air Release, Air & Vacuum and Universal Combination Valves meet or exceed ANSI/AWWA C512 Standards.

Note: Materials and prices are subject to change without notice. Metric and special class flange ratings are available.

## Air & Vacuum

### A, AL Series



Air and Vacuum Valves are designed to vent large quantities of air when filling pipelines, and to allow air to re-enter pipelines when draining to prevent vacuum collapse.  
**SIZES: 1/2" thru 24"**  
Cast iron body; stainless steel trim.

## Universal Air Release

### UL Series



These valves perform the function of both Air & Vacuum and Pressure Air Valves, permitting the application of various pressure orifice sizes for a range of air volume requirements under varying pressures. The design saves space and reduces cost.  
**SIZES: 2" THRU 8"**  
Cast iron body; stainless steel trim.

## Combination Air Release

### C Series



Combination Air Valves consist of Air and Vacuum Valves and a Pressure Valve mounted in a single body, providing the integrity of a single body casting while permitting each valve of the combination to operate as a separate unit.  
**SIZES: 1/2 THRU 24"**  
Cast iron body; bronze and stainless steel trim.

## Surge Check

### SC Series



Surge Check Valves are used on the inlet of the Air and Vacuum, Deep Well, Combination, Dual and Universal Valves to help prevent valve damage when surges occur.  
**SIZES: 3" THRU 24"**  
Cast iron body with stainless steel and bronze trim.

## Pressure Air Release

### PL Series



Pressure Air Valves are used for the venting of accumulating air while the system is in service and pressurized.  
**SIZES: 1" THRU 2"**  
Cast iron body; stainless steel trim  
**SIZES: 2 1/2" THRU 6"**  
Cast iron body; bronze trim; stainless steel float

## Dual Air

### AL/PL Series



Dual Air Valves are offered with Pressure Air Valve piped out of the side of an Air and Vacuum Valve, providing a variety of combinations to meet specific air release requirements.  
**SIZES: 1/2" THRU 24"**  
Air and Vacuum Valve piped to 3/8" thru 4" Pressure Air Release Valve

## Deep Well Air

### DL Series



Deep Well Air Valves have an adjustable top which controls the velocity of air discharged from the valve. It also helps prevent chatter, and premature closure of the valve mounted on the discharge side of the pump.  
**SIZES: 1/2 THRU 6"**  
Cast iron body; stainless steel trim

## Negative Pressure

### NP Series



Negative Pressure Air Valves are applied where the interest is only in venting air to the atmosphere, and not permitting air to re-enter the system under vacuum.  
**SIZES: 1/2" THRU 4"**  
Cast iron body; stainless steel trim

## Midget Air

### M Series



Midget Air Valves are used on hot and cold water systems, including irrigation systems where the venting of small accumulations or air is required while the system is in service and under pressure.  
**SIZES: 3/8" THRU 1"**  
Cast iron body; stainless steel trim.

## Pressure Air Release (AR)

### AR Series



**LOW VOLUME:**  
The Crispin Low Capacity Pressure Air Release Valve continuously and automatically vents accumulations of air under pressure.  
**SIZES: 1/2", 3/4" and 1"**  
Cast iron body with stainless steel trim



# VALVE OVERVIEW

All Crispin Air Release, Air & Vacuum and Universal Combination Valves meet or exceed ANSI/AWWA C512 Standards.

Note: Materials and prices are subject to change without notice. Metric and special class flange ratings are available.

## X Series

**UX Series  
PX Series  
AX Series**



Crispin Valve's exclusive X Series brings valve maintenance into the 21st century. All of the valve parts are stainless steel, making them impervious to rust. Instead of a bolted, flanged connection, the X Series features a stainless circular clamp to secure the valve head to the body. Available in Air & Vacuum, Pressure Air Release and Combination assemblies, the valve features our exclusive Head Exchange System, with its head fixed stainless steel internals. To clean, simply loosen the head assembly. Pull out the original head, and pop in a spare; then clean the original internals at your leisure.  
SIZES: 2" x 1"; 2" THRU 6"  
Stainless Steel body; Buna-N gasket and seat

## Air & Vacuum Sewer

**SA Series**



The valves have a long body with the float near the bottom. The liquid waste containing solid remains low and away from working parts, venting the pipeline when filling, and permitting air to re-enter to relieve a vacuum.  
SIZES: 2" THRU 10"  
Cast iron body with stainless steel trim.

## Combination Sewer

**S/SL Series**



The Air & Vacuum Sewer Valve and the Pressure Sewer Valve can be piped together to perform a dual function at the high point. After the S Valve relieves the large volume of air in the line and seats, the SL continues to release entrapped air and gas accumulations while the system is in operation.

## Vacuum Relief Valves

**VR Series**



The VR Valve allows air to enter the system when a negative pressure occurs, but prevents air from being released under positive conditions, except through an optional small orifice Air Release Valve.  
SIZES: 3" THRU 16"  
Cast iron body; bronze and stainless steel trim

## K-Flo Butterfly Valve

**500 Series**



The K-Flo 500 Series is a heavy-duty resilient seated butterfly valve line in full compliance with AWWA C504 for use in municipal, power and industrial applications.  
SIZES: 3" THRU 20"  
Cast iron body; ductile iron disc with 316 Stainless Steel Edge

**47 Series**



The K-Flo Wolverine Series is a large diameter valve line designed for a wide variety of liquid and gaseous applications. With over 50 years of service in the field, the valve is fully compliant with AWWA C504 requirements.  
SIZES: 24"-168"  
Cast iron body; ductile iron disc with 316 Stainless Steel Edge

## Universal Sewer Air Release

**US Series**



The Universal Sewer Air Release Valve performs the function of both the Air and Vacuum and Pressure Sewer Valves. This is accomplished all in one valve body.  
SIZES: 2" THRU 6"  
Cast iron body; stainless steel trim

## Pressure Air Release Sewer

**S Series**



Pressure Air Release Valves have a long body to keep liquid waste and solids away from working parts. These valves vent accumulations of air and gas while the system is in operation and under pressure.  
SIZES: 2" THRU 6"  
Cast iron body; stainless steel trim.

## Pump Protector

**WLC Series**



A Pump Protector is an Air Release Valve mounted in parallel with a liquid level sensing device. If the point of application should become airbound, the level switch will either shut down a pump, or open or close an electric circuit of an alarm system.  
SIZES: 1" THRU 4"  
Cast iron body; stainless steel float





# VALVE OVERVIEW

All Crispin Air Release, Air & Vacuum and Universal Combination Valves meet or exceed ANSI/AWWA C512 Standards.

Note: Materials and prices are subject to change without notice. Metric and special class flange ratings are available.

## Tilting Disc Check

### TD Series



Our Tilting Disc Valve uses superior design and function to provide the most efficient approach to controlling flow reversal, with a head loss lower than that of most any check valve made.  
**SIZES: 2" THRU 72"**  
Cast iron body; aluminum bronze and stainless-steel seat rings

## Swing Check

### SWC/SWL Series



The SWC provides an AWWA C-508-1 solution for more arduous check valve applications, including sewage and slurry. The SWL offers a simple and cost effective approach to basic applications.  
**SIZES: 2" THRU 36"**  
Available in both Class 125 and Class 250

## Wafer Silent Check

### WC Series



These valves have the same operating body configured for the Globe Check valve, but are offered in a configuration that allows placement between two flanges. ANSI Class 125 and Class 250.  
**SIZES: 2" THRU 10"**  
Cast iron body; bronze trim and stainless steel spring

## Thermally Activated

### TAV Series



These valves provide: freeze protection for valves and pipe lines; scald protection for eye wash stations and safety showers; heat tracing for valves and pumps; steam trap/drip trap capabilities.  
**SIZES: 1/2"**  
Stainless steel and brass construction

## Vacuum Priming

### VPL/VSL Series



Vacuum Priming valves are used in conjunction with a vacuum source when priming a centrifugal pump. Sewage Vacuum Priming Valves are also available.  
**SIZES: 1"-4" (clean water)  
2-4" (sewage)**  
Cast iron body

## Rubber Flapper Check

### RF Series



A versatile and cost-effective solution, the Rubber Flapper Check Valve provides a smaller stroke than conventional swing check valves, reducing slamming while offering a strong quick seal.  
**SIZES: 2" THRU 24"**  
Primer-coated ductile iron body with steel-reinforced Buna-N Rubber Flapper

## Globe Silent Check

### GC Series



Mounted vertically or horizontally, these valves are designed to close before the pump stops, preventing flow reversal and eliminating water hammer and system surges. ANSI Class 125 & Class 250.  
**SIZES: 2 1/2 THRU 36"**  
Cast iron body; bronze trim and stainless steel spring

## Foot Valve

### FV Series



Foot Valves help to maintain pump prime upon pump outage.  
**SIZES: 2" THRU 36"**  
Cast iron body; bronze disc and seat ring; resilient seat and stainless steel spring

## Tangential Flow Air Eliminator

### AE Series



The Tangential Flow Air Eliminator separates large or small slugs of air from liquid systems while the system is in operation.  
**SIZES: 2" THRU 24"**  
ASME code tank with cast iron body and stainless steel trim air release valve

**Note:** Crispin air valves are supplied with NPT screwed or ANSI flanged inlet. Vent Piping should not be directly connected to a drain; otherwise, vacuum may draw contaminated fluid or matter back into the system. To inspect valves, remove top flange and all working parts will be in full view. Crispin Valves are designed for years of trouble-free service.