

Lever Operated Vertical Pull Tester



Setup shows
WG-2 grip and
GT-30 vise chuck

Setup shows
WG-3 grip and
WG-300 cam grip

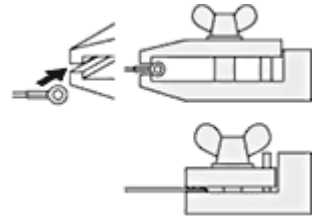
- LV-220T vertical test stand
- DPS Digital Force gauge (choice of range)
- GT-30 Vise Chuck or WG-300 Cam Grip (your choice)
- WG-1 or WG-2 Grip (your choice)
- Max Load: 220 lbf
- Outstanding accuracy of $\pm 0.2\%$
- Real time and peak mode (selectable)
- Newton, lb and kg units are selectable
- RS-232C, Digimatic and analog outputs

All items sold separately

[Dimensions](#) | [Data Acquisition](#)

This digital pull tester is for checking the pull-off force values of electrical leads, crimped terminals, connectors, and soldered parts. System consists of test stand and DPS force gauge of your choice. Choose optional pull test attachments wedge grip, cam grip, vise chuck, WG-1 or WG-2 wire grip to suit your application (other attachments available).

WG-1 is perfect for pull testing crimp on terminals. Set the opening size by turning the wingnut until jaws contact sample, then back off a little until the sample slides into the jaws from the side. Then you can simply slide the next sample into the jaws when you are ready to test.



WG-2 grips the actual wire or sample tested with serrated jaws. Ideal for a variety of shapes.

WG-3 multi terminal grip has 12 wire gauge apertures on the turret. Locate the appropriate size, lock in position and you're ready to test.

The KC-100 spring-loaded wedge grip is ideal for tensile measurements of thick materials (up to 10mm thick). The serrated jaw is 15mm wide.

Crimp Test Attachments



WG-1

WG-2

WG-3

KC-1000

GT-30 VISE CHUCK

WG-300 CAM GRIP

DPS Ranges (Resolution) Accuracy: $\pm 0.2\%$ F.S. ± 1 LSD

Model	Capacity (Resolution)		
	Pounds/Ounces	Kilograms/Grams	Newtons
DPS-0.5	8.819 ozf (0.001 ozf)	250.0 gf (0.1 gf)	2.452 N (0.001 N)
DPS-1	17.64 ozf (0.01 ozf)	500.0 gf (0.1 gf)	4.903 N (0.001 N)
DPS-4	4.409 lbf (0.001 lbf)	2.000 kgf (0.001 kgf)	19.61 N (0.01 N)
DPS-11	11.02 lbf (0.01 lbf)	5.000 kgf (0.001 kgf)	49.03 N (0.01 N)
DPS-44	44.09 lbf (0.01 lbf)	20.00 kgf (0.01 kgf)	196.1 N (0.1 N)
DPS-110	110.2 lbf (0.1 lbf)	50.00 kgf (0.01 kgf)	490.3 N (0.1 N)
DPS-220	220.5 lbf (0.1 lbf)	100.0 kgf (0.1 kgf)	980 N (0.1 N)