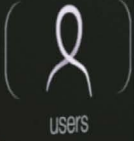




home

10:00

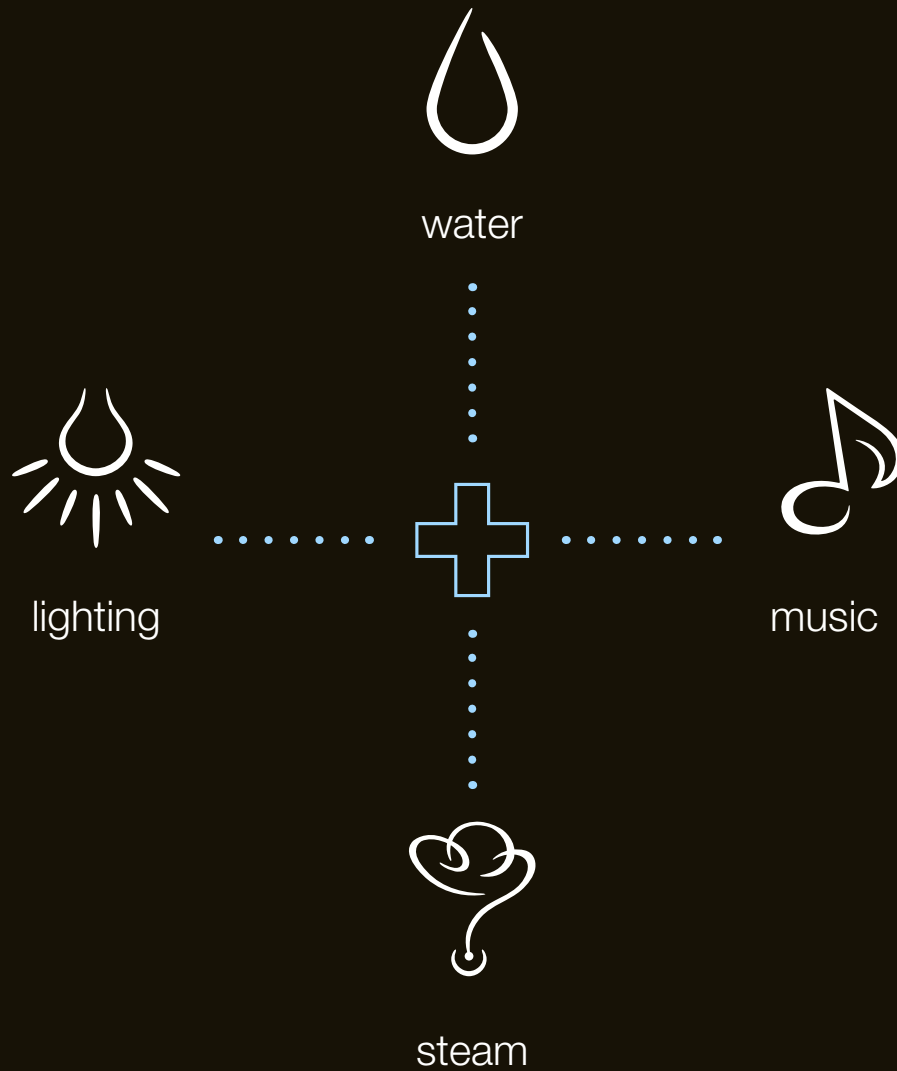
Monday
25 July 2014



KOHLER

what is dtv+?

DTV+™ is our most advanced showering system. It is a digital thermostatic valve (DTV) system that controls four elements to give you a true multi-sensory showering experience. Every element of your showering experience is completely customizable to your needs and is controlled by the touch-screen interface. There's nothing quite like it for the home, and it's only from Kohler.



control the elements

Water DTV+™ works with one or two valves. Each valve gives you six, three or two ports that run different showering components simultaneously.

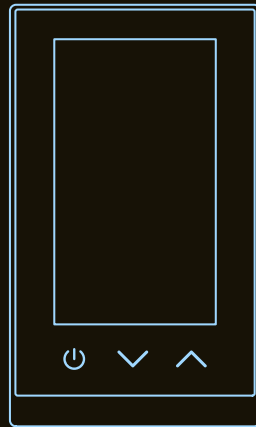
Music Add a KOHLER® Amplifier and SoundTile® speakers to introduce music into any showering experience. Amp yourself up for the day or unwind from the daily grind with your favorite playlist.

Steam Add a steam adapter and steam generator to bask in the rejuvenating embrace of a soothing steam experience.

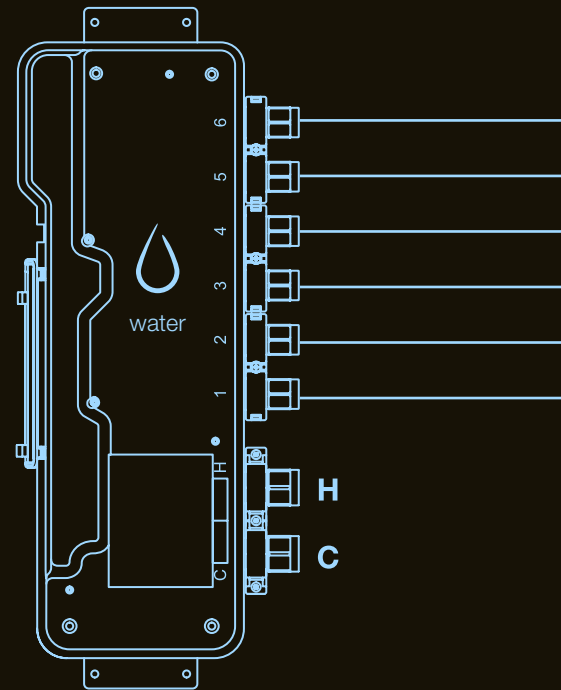
Lighting Add lighting elements to control every aspect of the entire room's ambience. It will set the mood for your very own spa retreat.



Interface



Valve



design your shower

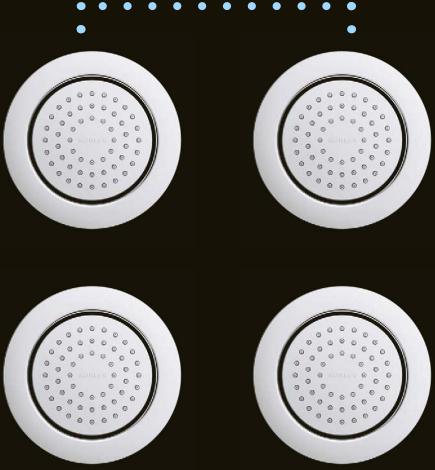
Your entire experience is controlled by an intuitive touch-screen interface. At a simple touch, you set an array of showering components into motion. You choose the components that best suit your needs, from the full, rich coverage of a rainhead to the targeted stream of body sprays to the spa-like hydrotherapy of multifunction showerheads.



Rainhead



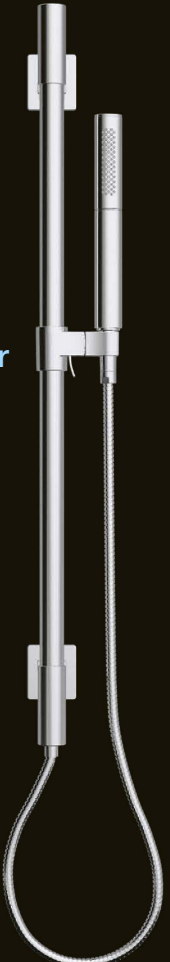
Showerhead



Body Sprays



Foot Sprays



Handshower



Handshowers

add versatility and functionality to your showering experience.



Body Sprays

deliver a targeted spray of water to help ease and relax your body.



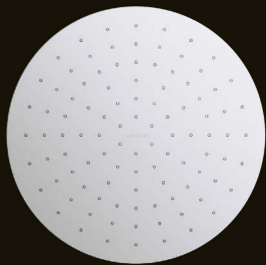
Foot Sprays

elevate an already luxurious experience to another level.



Showerheads

provide a wide range of KOHLER® spray experiences and many feature an easy-to-clean MasterClean™ sprayface.



Rainheads

feature Katalyst® spray technology for air-infused water droplets that deliver a big water experience.

select your components

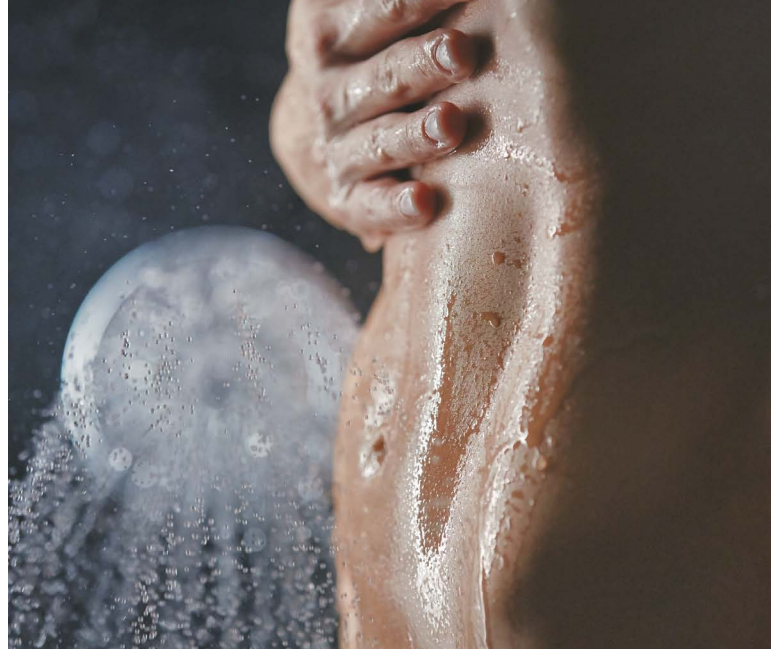
DTV+™ requires one or two valves for the complete experience. Each valve provides either six, three or two ports that are automatically controlled through the digital touch screen. Each port runs a different showering component to deliver the customized showering experience of your dreams.



modular by design

You decide how simple or grand you want your shower to be because you get to choose which water delivery components you want to experience whenever you step into your shower—from targeted body sprays to the warm drenching of a rainhead

to the versatility of a handshower to a range of sprays with a multifunction showerhead. Add elements, such as SoundTile® speakers for music, a steam generator for steam experiences or a WaterTile® Ambient Rain® shower panel for chromatherapy.



From there, the possibilities are wide open. Set a different experience for gearing up for the day or winding down from the grind. Set up unique “his” and “her” showers to run simultaneously. Or have an experience for every member of the household.





complete customization

DTV+™ lets you completely customize your showering experience down to the last detail. Precision temperature. Timing. Coordination between shower components. Everything. DTV+ digital showering system is the epitome of personalization and delivers complete customization at your fingertips. A KOHLER® Showroom consultant can help you design your custom shower.

intuitive control

The touch-screen interface provides convenient, intuitive control of every component—from water delivery to music selection to lighting. The interface is simple to navigate, completely waterproof and works with wet fingers. Six user presets allow you to create and save your favorite experiences. And the digital touch screen eliminates the multiple levers and knobs of a manual shower—giving you a clean, uncluttered shower space.



dual temperatures

Installing two valves in your DTV+™ shower allows you to run two different temperatures simultaneously. The experience of the contrasting temperatures cascading across your body is like relaxing in a hot spring atop a snow-swept mountain. There's nothing else quite like it for a home shower experience.

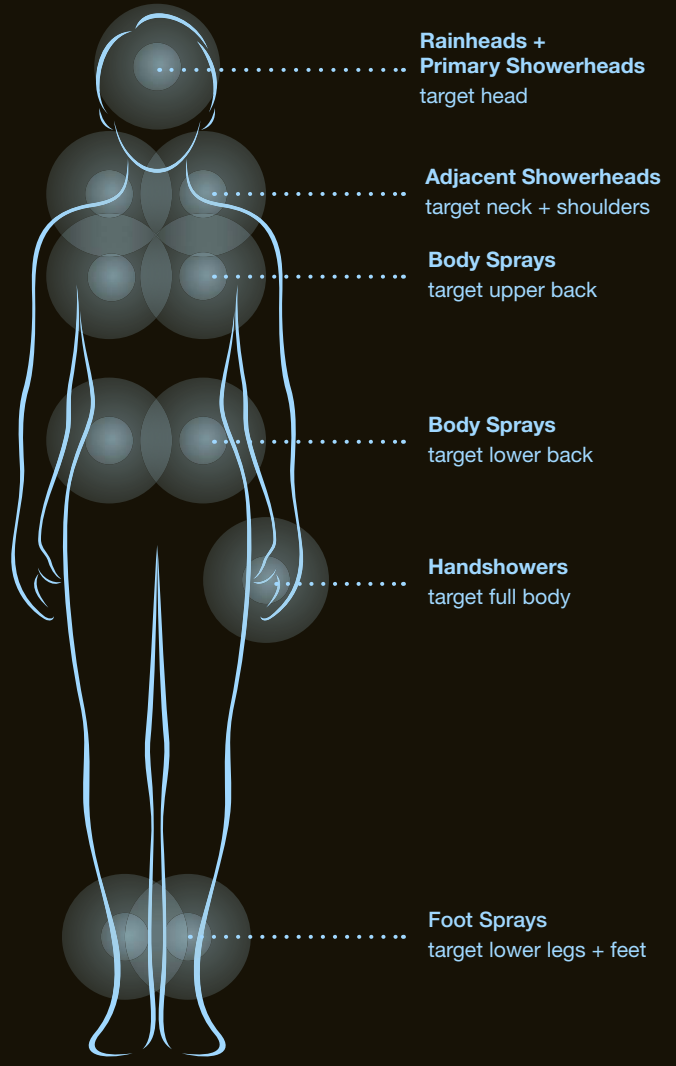








Water Delivery Zones



Rainheads + Primary Showerheads
target head

Adjacent Showerheads
target neck + shoulders

Body Sprays
target upper back

Body Sprays
target lower back

Handshowers
target full body

Foot Sprays
target lower legs + feet

spa experiences

DTV+™ can take your daily shower ritual to another level with preprogrammed spa experiences. Each one was scripted with actual hydrotherapies in mind and was inspired by one of three themes: **Relaxation**, **Well-Being** or **Energy**. Think of them as a playlist for your shower where the power of water, light, sound and steam can cleanse both body and mind.

details at a glance

The preprogrammed spa experiences are designed to deliver specific spa-like benefits.

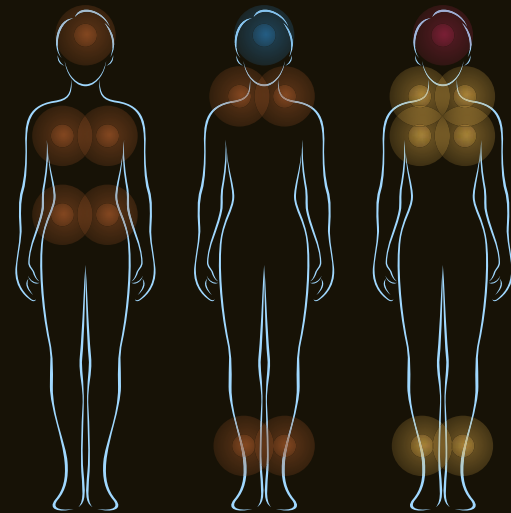
- The experiences vary in time and can be up to 7 minutes long.
- You can vary the time of the experience by repeating or skipping individual steps.
- The intensity of each experience can be adjusted and saved as a user preset.
- Each experience coordinates water temperature and intensity to cycle through different showering components (rainheads, body sprays, etc.). The result is a unique spa experience developed with specific benefits in mind.
- Any experience can be combined with audio and lighting elements.
- The touch-screen interface automatically notifies you when new spa experiences are available if the system is connected to the internet via your home network.

Spa Experience Sequence Example

Duration	2:00	0:20	0:25
----------	------	------	------

Step	1	2	3
------	---	---	---

Water
Delivery
Zones



Intensity:
Medium



0:20

0:25

0:20

0:25

0:20

0:25

1:00

1:00

4

5

6

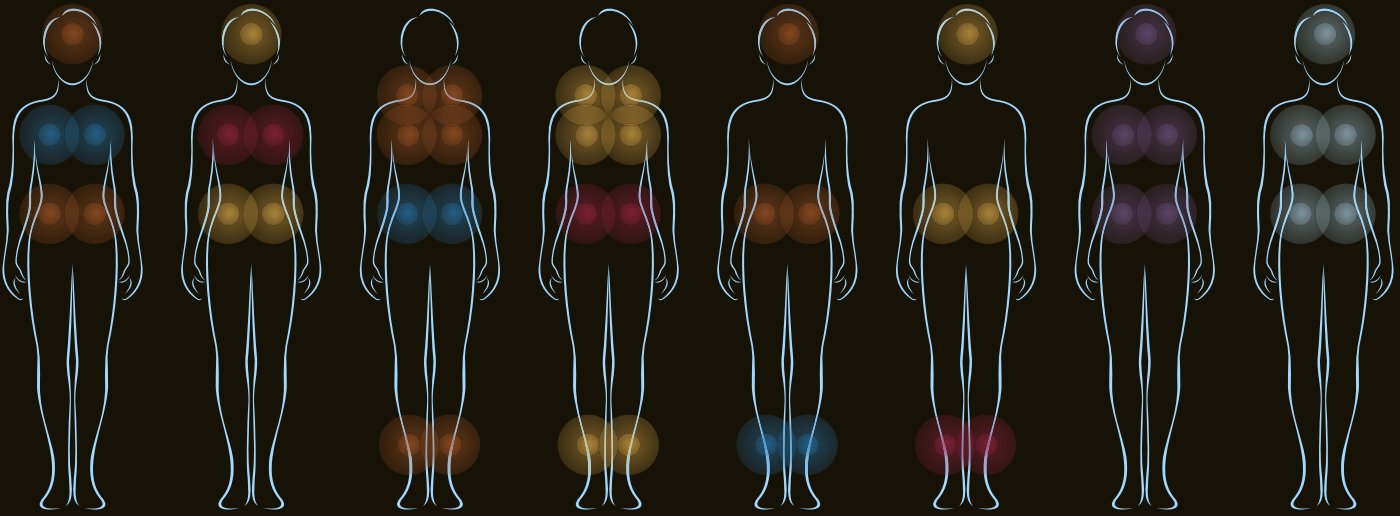
7

8

9

10

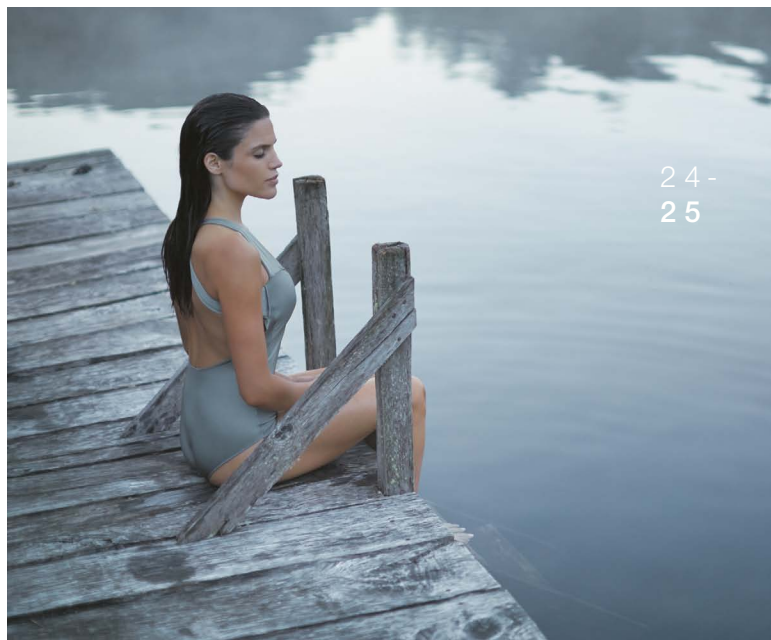
11



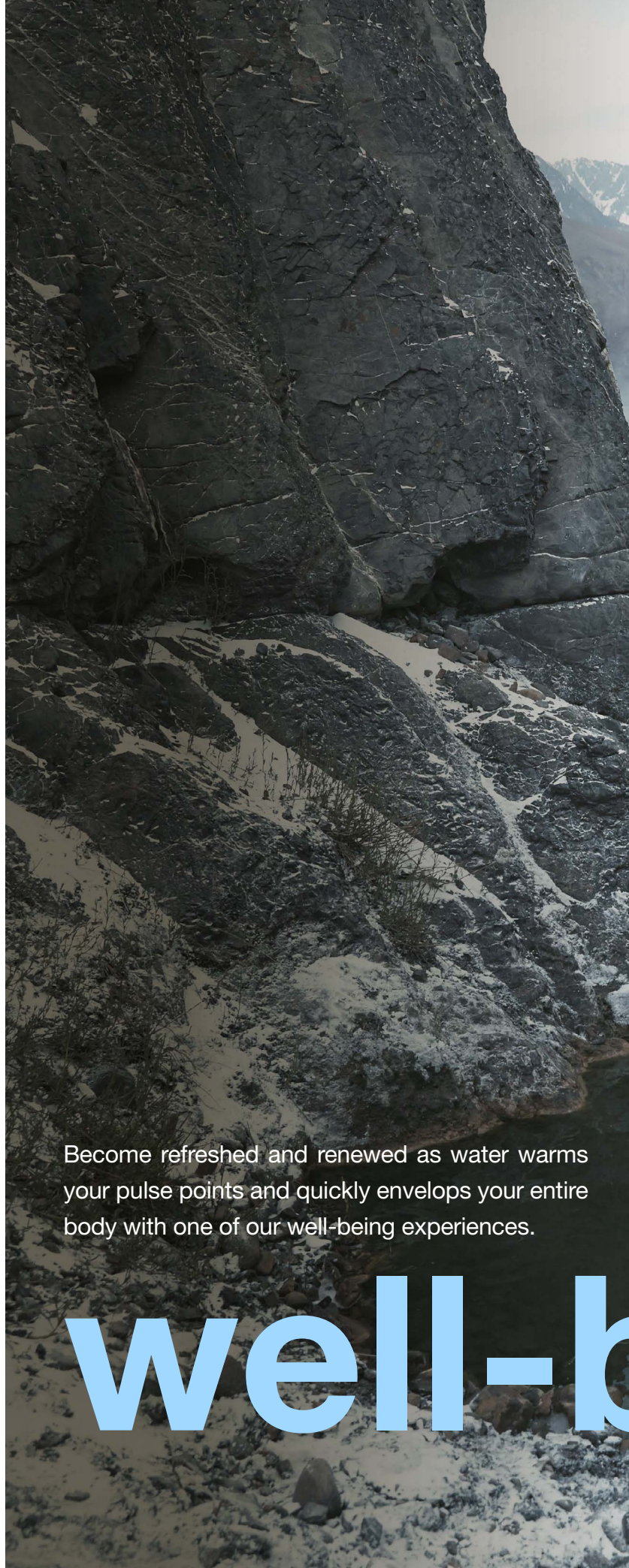
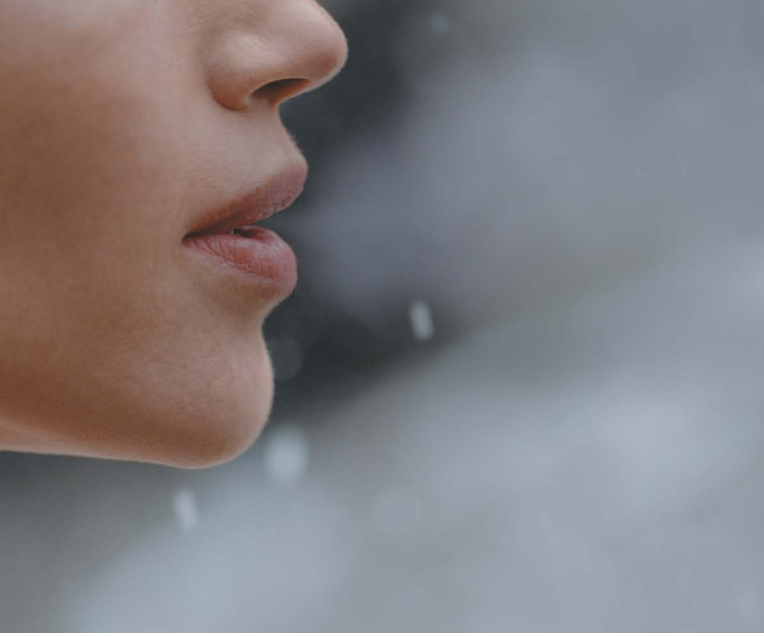
A serene landscape featuring a calm lake in the foreground, misty mountains in the middle ground, and a wooden pier extending into the water. The sky is clear and blue, and the overall atmosphere is peaceful and relaxing.

relaxation

Bask in the rejuvenating power of water and heat to target exhausted muscles and de-stress the mind from the daily grind with one of our relaxation experiences.



24-
25



Become refreshed and renewed as water warms your pulse points and quickly envelops your entire body with one of our well-being experiences.

well-b

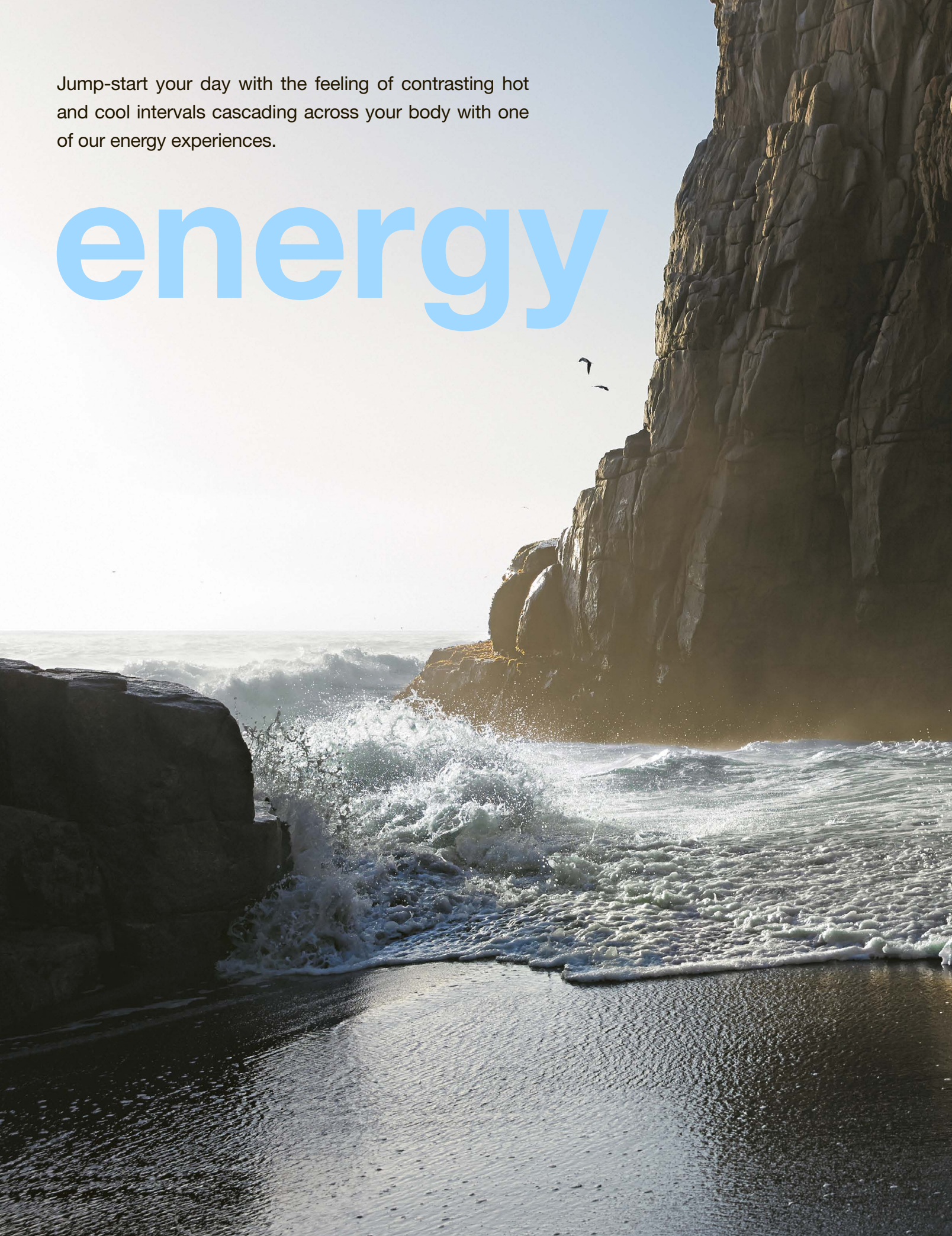
A woman with long dark hair, wearing a grey one-piece swimsuit, stands with her back to the camera in a shallow mountain lake. The water is clear and reflects the surrounding landscape. The lake is surrounded by rocky shores and large boulders. In the background, there are rugged mountains with patches of snow under a blue sky with light clouds. The overall scene is serene and natural.

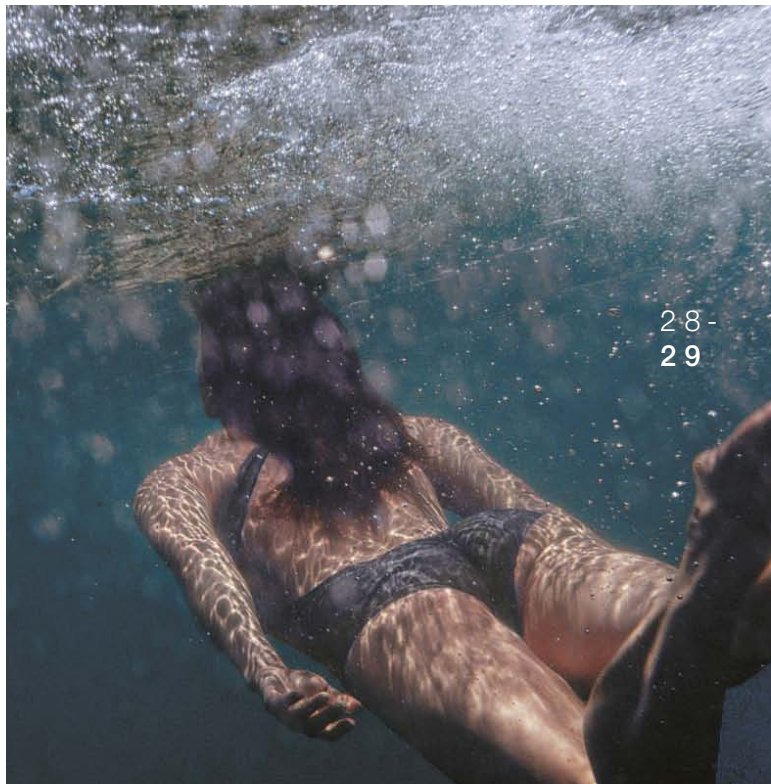
being

26-
27

Jump-start your day with the feeling of contrasting hot and cool intervals cascading across your body with one of our energy experiences.

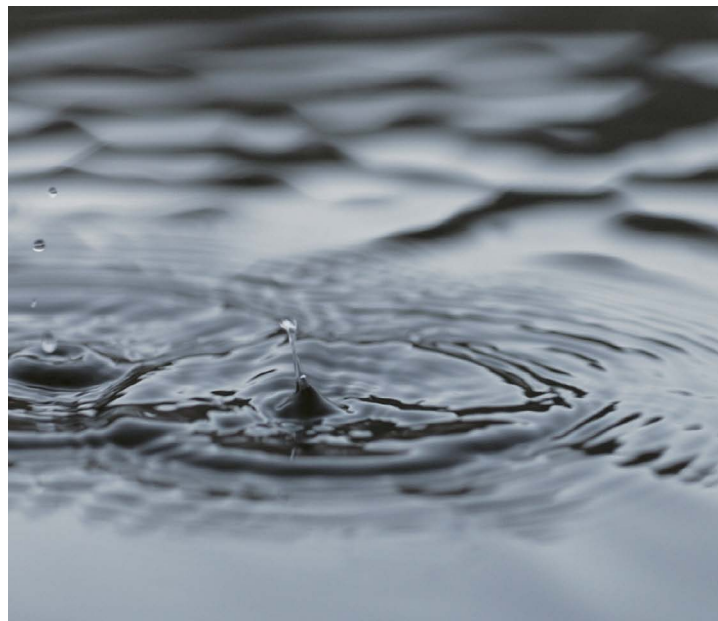
energy



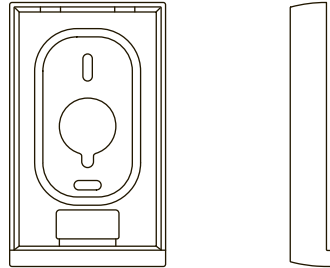
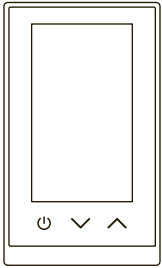




dtv⁺
product
offering



Digital Interface



DTV+™ Digital Interface
 3⁵/₁₆" x 5¹/₈" x 1¹/₁₆"
 84 x 130 x 27 mm

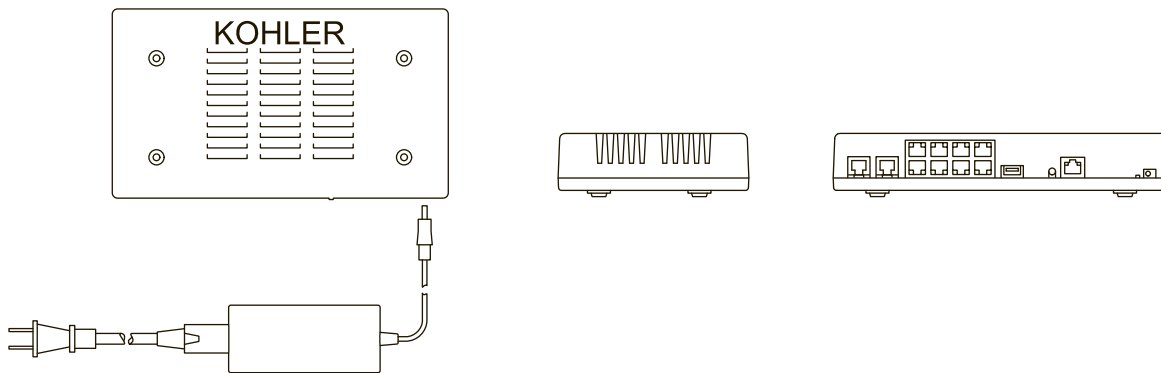
K-99693-NA

DTV+ Digital Interface Mounting Bracket
 3⁵/₁₆" x 5⁵/₈" x 1"
 84 x 143 x 25 mm

K-99694

Available in CP, BN, SN, BL

System Controller



DTV+ System Controller Module and Power Supply
 9¹/₂" x 5³/₈" x 1³/₄"
 241 x 137 x 44 mm

K-99695-NA

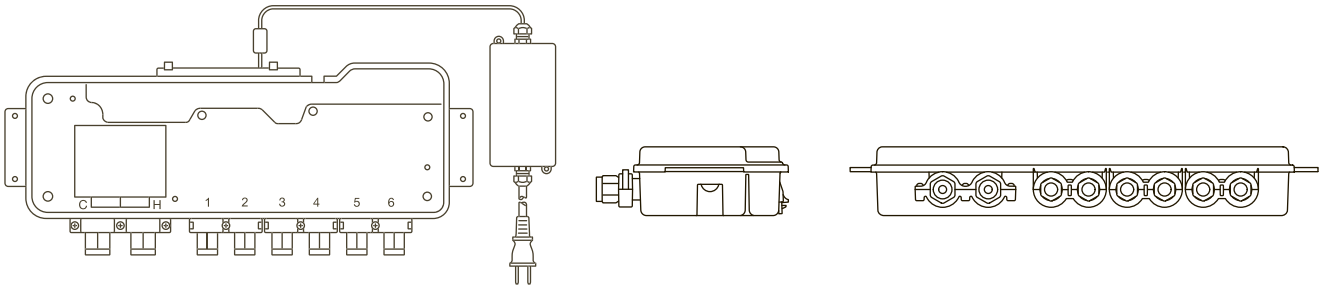
With Eco-Mode Software (allows operation of only one outlet at a time)

K-99695-E-NA

Finishes: Polished Chrome (-CP), Vibrant® Brushed Nickel (-BN), Vibrant Polished Nickel (-SN), Black (-BL)

Note: The DTV+ digital interface, mounting bracket and system controller module are required for all DTV+ installations.
For additional information, visit us.KOHLER.com.

Valves

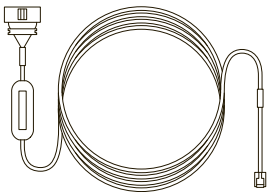


DTV+™ 6-Port Digital Thermostatic Valve

K-682-K-NA

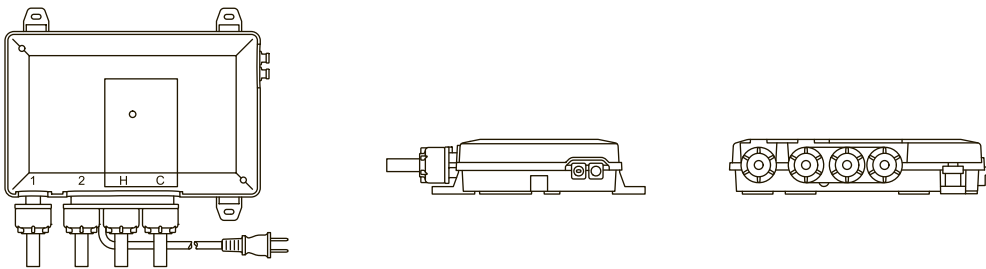
22¼" x 9¾" x 3⅝"

565 x 233 x 84 mm



DTV+ 25' (7.62 m) Data Cable (for K-682-K 6-Port Valve)

K-97172-NA



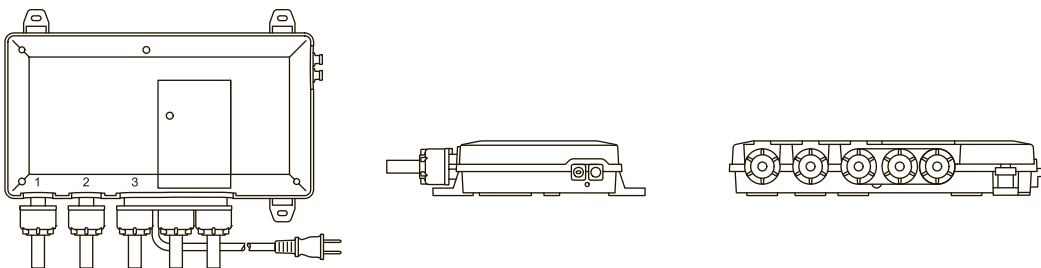
DTV® 2-Port Digital Thermostatic Valve

K-528-K1-NA

9⅞" x 9½" x 2⅛"

240 x 241 x 68 mm

Note: Optional mounting brackets increase height from 9½" to 12½" (from 241 mm to 318 mm)



DTV 3-Port Digital Thermostatic Valve

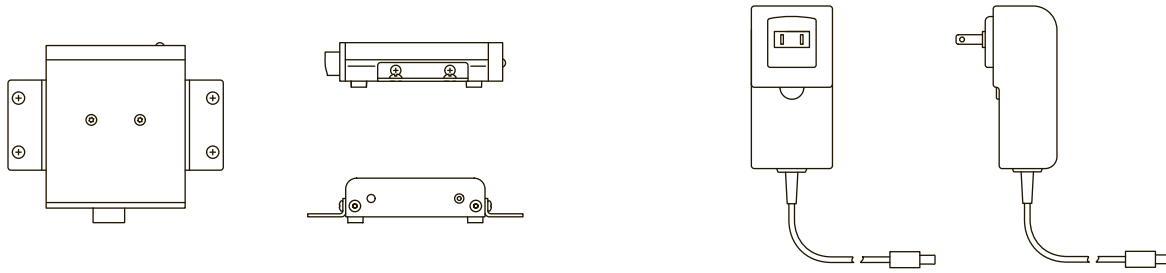
K-557-K1-NA

12" x 9½" x 2⅛"

305 x 241 x 68 mm

Note: Optional mounting brackets increase height from 9½" to 12½" (from 241 mm to 318 mm)

Amplifier



DTV+™ Amplifier Module and Power Supply

K-99696-NA

3⁵/₈" x 4¹/₄" x 1³/₁₆"

92 x 108 x 30 mm

Note: Optional mounting brackets increase width from 3⁵/₈" to 5⁵/₈" (from 92 mm to 143 mm)

Complementary Products

SoundTile® Speakers (Pair)

K-8033

4⁷/₈" x 4⁷/₈" x 3³/₁₆"

124 x 124 x 81 mm

Available in CP, G, AF, BN, BV, SN, 2BZ

DTV+ Steam Adapter Kit

K-5548-K1

Adapter Box: 3¹/₄" x 4" x 3⁴/₄"

83 x 102 x 19 mm

Steam Head: 3" Diameter x 2⁵/₈"

76 x 67mm

Available in CP, BN, BV, SN, 2BZ

Note: Required for 5-15 kW KOHLER® Invigoration™ Series steam generators

WaterTile® Ambient Rain® Shower Panel

K-98741-K1

21" x 21" x 4⁷/₈"

533 x 533 x 124 mm

Available in CP, BN, BV, SN, 2BZ

DTV+ Tandem Steam Adapter Kit

K-5549-K1

Adapter Box: 3¹/₄" x 4" x 3⁴/₄"

83mm x 102mm x 19mm

Steam Heads (2): 3" Diameter x 2⁵/₈"

76 x 67 mm

Available in CP, BN, BV, SN, 2BZ

Note: Required for 18-30 kW KOHLER Invigoration Series steam generators

Wi-Fi Module

Universal Wi-Fi Adapter

(Not supplied by Kohler)

Enables the DTV+ system to wirelessly connect to your existing home wireless network and Internet. (Not required for DTV+ system operation.)

Recommended Specifications:

Works with 802.11b/g/n network

Single Ethernet port for connection to system controller

Finishes: Polished Chrome (-CP), Brushed Chrome (-G), Vibrant® French Gold (-AF), Vibrant Brushed Nickel (-BN), Vibrant Brushed Bronze (-BV), Vibrant Polished Nickel (-SN), Oil-Rubbed Bronze (-2BZ)







THE BOLD LOOK
OF **KOHLER**®

KOHLER.com/DTVplus

Form 14-1699-0116
© 2016 Kohler Co.
Kohler, Wisconsin 53044
Printed in U.S.A.
1-800-4-KOHLER
(1-800-456-4537)