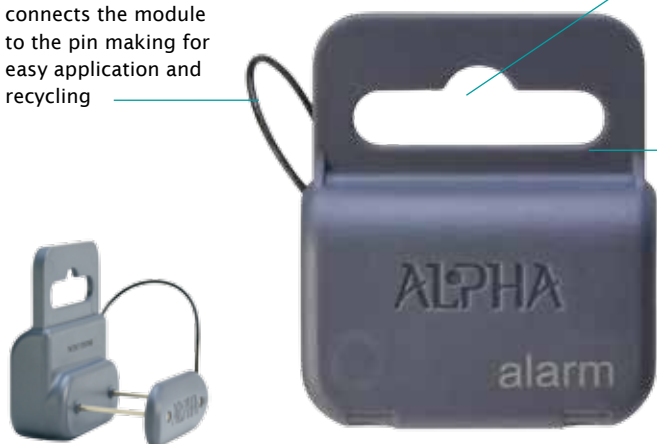


Thin yet durable cable connects the module to the pin making for easy application and recycling

Extra-wide design accommodates dual rod peg hooks

Reinforced tab is strong enough to handle heavy merchandise



Dual Rod Hang Tag

The Single and Dual Rod Hang Tags are the perfect solution to effectively secure blister packages and clamshell-packaged merchandise. Alpha has a complete line of Hard Tags for your high-theft merchandise.

KEY FEATURES:

- Available in long and short pin styles
- Pins also sold separately as replaceable parts
- Tough, secure and reusable
- Easy to apply and remove

SUGGESTED APPLICATIONS:

- Clamshell packaged merchandise
- Blister packages



Single Rod Hang Tag



ORDER CODE	SAP CODE	DESCRIPTION	EXTERNAL DIM. (L x W x D)	CARTON QTY.
HTAGSRND	9406523	Single Rod Hang Tag - AM	1.91"L x 1.20"W x 0.66"D	100
HTAGSRRF	9288267	Single Rod Hang Tag - RF	(4.85 cmL x 3.05 cmW x 1.67 cmD)	100
HTAGNSP	9406525	Hang Tag Pin, Short - 0.50" (1.27 cm)	1.61"L x 0.75"W x 0.50"D	100
HTAGNLP	9406526	Hang Tag Pin, Long - 0.96" (2.44 cm)	(4.09 cmL x 1.91 cmW x 1.27 cmD)	100
			1.61"L x 0.75"W x 0.96"D	100
			(4.09 cmL x 1.91 cmW x 2.44 cmD)	

Continued on back ...

ORDER CODE	SAP CODE	DESCRIPTION	EXTERNAL DIM. (L x W x D)	CARTON QTY.
HT1387SHAM HT1387SHRF	10109878 10109879	Dual Rod Hang Tag with Short Pin - AM Dual Rod Hang Tag with Short Pin - RF	1.69"L x 0.71"W x 1.92"D (4.30 cmL x 1.80 cmW x 4.90 cmD)	100 100
HT1387LGAM HT1387LGRF	10109880 10109891	Dual Rod Hang Tag with Long Pin - AM Dual Rod Hang Tag with Long Pin - RF	1.69"L x 0.71"W x 1.92"D (4.30 cmL x 1.80 cmW x 4.90 cmD)	100 100
HT1387SHPIN HT1387LGPIN	10110597 10110598	Dual Rod Spare Pin, Short Dual Rod Spare Pin, Long	0.50" (1.27 cm) 1.00" (2.54 cm)	50 50