

# SIMPLEX CONTROL PANELS

Single Phase, 115/200/230 volt,  
for Sewage, Effluent &  
Non-Clog Pumps



<b>Enclosure</b>	Type 4X polycarbon
<b>Circuit breaker</b>	For pump and control circuits
<b>Contactor</b>	Definite purpose
<b>HOA switch</b>	Three position toggle HP rated
<b>Alarm switch</b>	Three position toggle HP rated
<b>Run light</b>	Amber neon pilot light
<b>Bracket</b>	Bright aluminum
<b>Fuse</b>	Control and alarm sized at 3 amps
<b>Terminal strip</b>	Box type lugs sectional
<b>Wiring</b>	Color coded
<b>Visible alarm</b>	360 degree flashing
<b>Audible alarm</b>	Piezo buzzer
<b>Level control</b>	Requires 3 floats rated at 2 amps
<b>Certifications</b>	UL 508A

Volts	Phase	Amps	Part number
115	1	20	BP11S4XNM020
200	1	20	BP01S4XNM020
230	1	20	BP21S4XNM020
230	1	40	BP21S4XNM040

NOTE: Overloads must be located in pump.

Consult factory for other available options. Some options may require an increase in the enclosure size.



# DUPLEX CONTROL PANELS

Single Phase, 115/200/230 volt,  
for Sewage, Effluent &  
Non-Clog Pumps



<b>Enclosure</b>	Type 4X polycarbon
<b>Circuit breaker</b>	For pump and control circuit
<b>Contactor</b>	Definite purpose
<b>HOA switch</b>	Three position toggle HP rated
<b>Alarm switch</b>	Three position toggle HP rated
<b>Run light</b>	Amber neon pilot light
<b>Alternating relay</b>	With lead selector switch
<b>Bracket</b>	Bright aluminum
<b>Fuse</b>	Control and alarm sized at 3 amps
<b>Terminal strip</b>	Box type lugs sectional
<b>Wiring</b>	Color coded
<b>Visible alarm</b>	360 degree flashing
<b>Audible alarm</b>	Piezo buzzer
<b>Level control</b>	Requires 4 floats rated at 2 amps
<b>Certifications</b>	UL 508A

Volts	Phase	Amps	Part number
115	1	20	BP11D4XNM020
200	1	20	BP01D4XNM020
230	1	20	BP21D4XNM020
230	1	40	BP21D4XNM040

NOTE: Overloads must be located in pump.

Consult factory for other available options. Some options may require an increase in the enclosure size.



# SIMPLEX CONTROL PANELS

Single Phase, 200/230 volt,  
for Sewage, Effluent & Non-Clog  
Pumps w/ Start Components



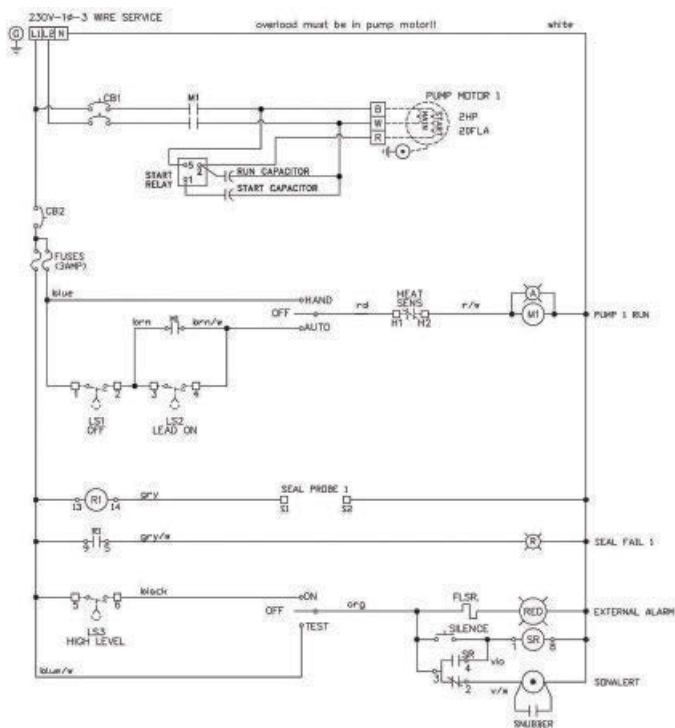
<b>Enclosure</b>	Type 4X polycarbon
<b>Circuit breaker</b>	For pump and control circuit
<b>Contactor</b>	Definite purpose
<b>HOA switch</b>	Three position toggle HP rated
<b>Alarm switch</b>	Three position toggle HP rated
<b>Run light</b>	Amber neon pilot light
<b>Start components</b>	Potential relay and capacitors
<b>Moisture sensor*</b>	Seal fail circuit and light
<b>Temp sensor*</b>	Heat sensor connections
<b>Bracket</b>	Bright aluminum
<b>Fuse</b>	Control and alarm sized at 3 amps
<b>Terminal strip</b>	Box type lugs sectional
<b>Wiring</b>	Color coded
<b>Visible alarm</b>	360 degree flashing
<b>Audible alarm</b>	Piezo buzzer
<b>Level control</b>	Requires 3 floats rated at 2 amps
<b>Certifications</b>	UL 508A

\* Requires sensor to be in pump.

Consult factory for other available options. Some options may require an increase in the enclosure size.

Volts	Phase	Amps	Part number
200	1	20	BP01CS4XNM020
230	1	20	BP21CS4XNM020
230	1	40	BP21CS4XNM040

NOTE: Overloads must be located in pump.



# DUPLEX CONTROL PANELS

Single Phase, 200/230 volt,  
for Sewage, Effluent & Non-Clog  
Pumps w/ Start Components



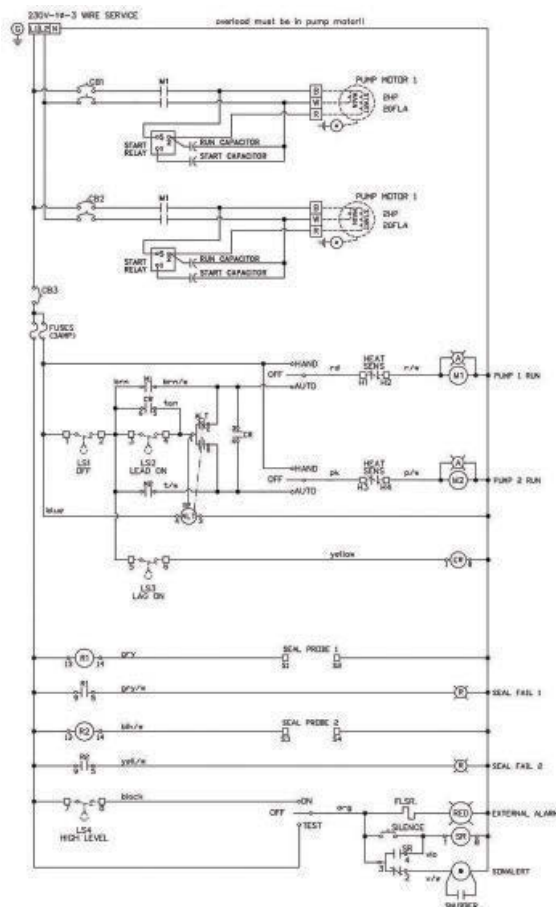
- Enclosure** Type 4X polycarbon
- Circuit breaker** For pump and control circuit
- Contactor** Definite purpose
- HOA switch** Three position toggle HP rated
- Alarm switch** Three position toggle HP rated
- Run light** Amber neon pilot light
- Start components** Potential relay and capacitors
- Alternating relay** With lead selector switch
- Moisture sensor\*** Seal fail circuit and light
- Temp sensor\*** Heat sensor connections
- Bracket** Bright aluminum
- Fuse** Control and alarm sized at 3 amps
- Terminal strip** Box type lugs sectional
- Wiring** Color coded
- Visible alarm** 360 degree flashing
- Audible alarm** Piezo buzzer with silence switch
- Level control** Requires 4 floats rated at 2 amps
- Certifications** UL 508A

\* Requires sensor to be in pump.

Consult factory for other available options. Some options may require an increase in the enclosure size.

Volts	Phase	Amps	Part number
200	1	20	BP01CD4XNM020
230	1	20	BP21CD4XNM020
230	1	40	BP21CD4XNM040

NOTE: Overloads must be located in pump.



# SIMPLEX CONTROL PANELS

Three Phase, 200 volt,  
for Sewage, Effluent &  
Non-Clog Pumps



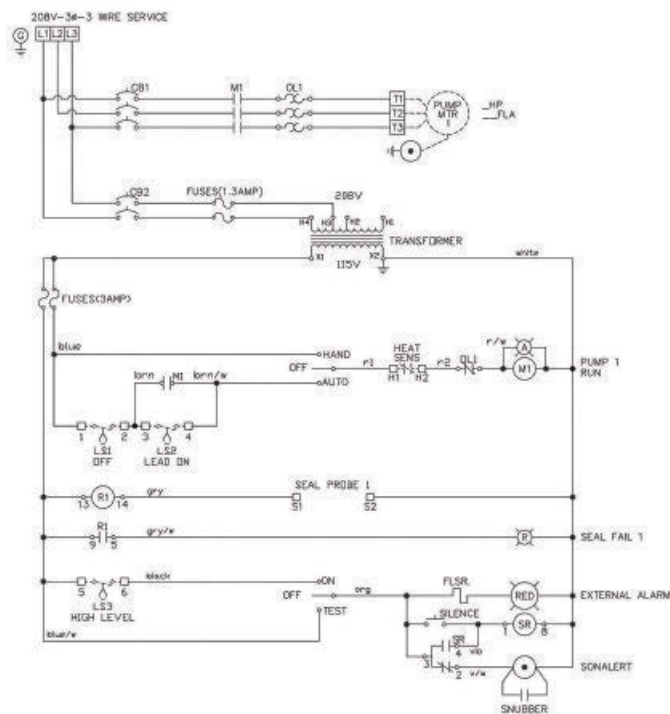
- Enclosure** Type 4X Polycarbon
- Circuit breaker** For pump and control circuit
- Motor starter** IEC rated with class 10 overload
- HOA switch** Three position toggle HP rated
- Alarm switch** Three position toggle HP rated
- Run light** Amber neon pilot light
- Transformer** With fuse protection
- Moisture sensor\*** Seal fail circuit and light
- Temp sensor\*** Heat sensor connections
- Bracket** Bright aluminum
- Fuse** Control and alarm sized at 3 amps
- Terminal strip** Box type lugs sectional
- Wiring** Color coded
- Visible alarm** 360 degree flashing
- Audible alarm** Piezo buzzer
- Level control** Requires 3 floats rated at 2 amps
- Certifications** UL 508A

\* Requires sensor to be in pump.

Consult factory for other available options. Some options may require an increase in the enclosure size.

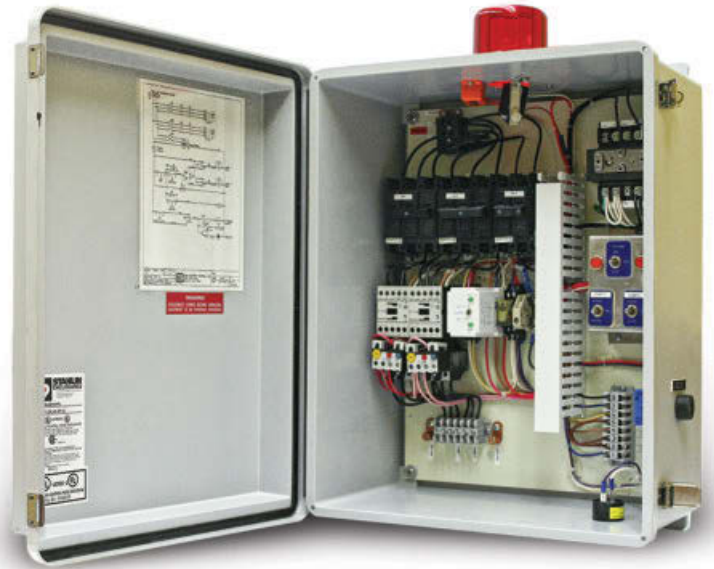
Volts	Phase	Amps	Part number
200	3	2.4 - 4	BP03S4XNM004
200	3	4 - 6	BP03S4XNM006
200	3	6 - 10	BP03S4XNM010
200	3	9 - 12	BP03S4XNM012
200	3	10 - 16	BP03S4XNM016
200	3	16 - 18	BP03S4XNM018
200	3	18 - 24	BP03S4XNM024
200	3	24 - 32	BP03S4XNM032
200	3	32 - 40	BP03S4XNM040

NOTE: Overloads must be located in pump.



# DUPLEX CONTROL PANELS

Three Phase, 200 volt,  
for Sewage, Effluent &  
Non-Clog Pumps



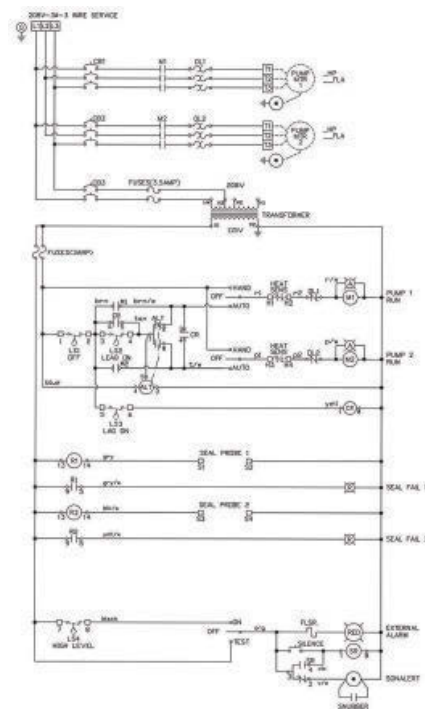
- Enclosure** Type 4X Polycarbon
- Circuit breaker** For pump and control circuit
- Motor starter** IEC rated with class 10 overload
- HOA switch** Three position toggle HP rated
- Alarm switch** Three position toggle HP rated
- Run light** Amber neon pilot light
- Transformer** With fuse protection
- Moisture sensor\*** Seal fail circuit and light
- Temp sensor\*** Heat sensor connections
- Bracket** Bright aluminum
- Fuse** Control and alarm sized at 3 amps
- Terminal strip** Box type lugs sectional
- Wiring** Color coded
- Visible alarm** 360 degree flashing
- Audible alarm** Piezo buzzer
- Level control** Requires 3 floats rated at 2 amps
- Certifications** UL 508A

\* Requires sensor to be in pump.

Consult factory for other available options. Some options may require an increase in the enclosure size.

Volts	Phase	Amps	Part number
200	3	2.4 - 4	BP03D4XNM004
200	3	4 - 6	BP03D4XNM006
200	3	6 - 10	BP03D4XNM010
200	3	9 - 12	BP03D4XNM012
200	3	10 - 16	BP03D4XNM016
200	3	16 - 18	BP03D4XNM018
200	3	18 - 24	BP03D4XNM024
200	3	24 - 32	BP03D4XNM032
200	3	32 - 40	BP03D4XNM040

NOTE: Overloads must be located in pump.



# SIMPLEX CONTROL PANELS

Three Phase, 230 volt,  
for Sewage, Effluent &  
Non-Clog Pumps



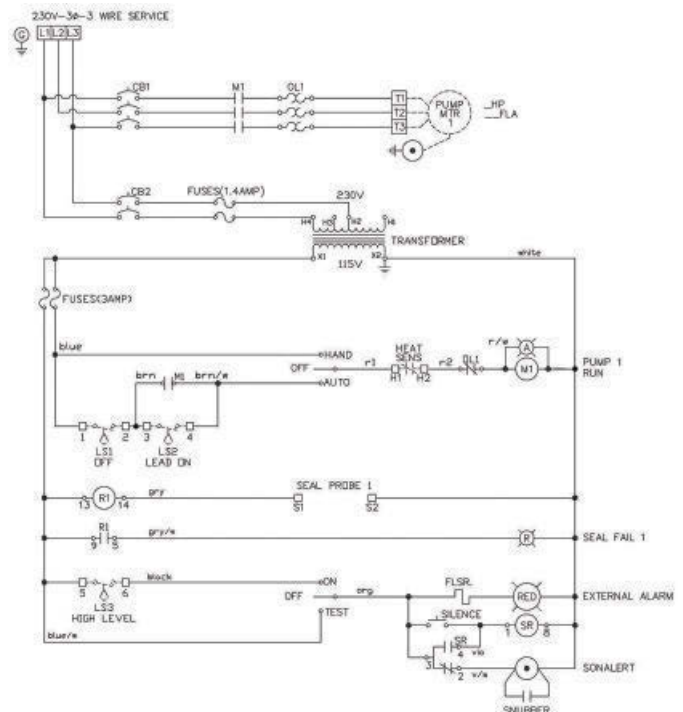
- Enclosure** Type 4X Polycarbon
- Circuit breaker** For pump and control circuit
- Motor starter** IEC rated with class 10 overload
- HOA switch** Three position toggle HP rated
- Alarm switch** Three position toggle HP rated
- Run light** Amber neon pilot light
- Transformer** With fuse protection
- Alternating relay** With lead selector switch
- Moisture sensor\*** Seal fail circuit and light
- Temp sensor\*** Heat sensor connections
- Bracket** Bright aluminum
- Fuse** Control and alarm sized at 3 amps
- Terminal strip** Box type lugs sectional
- Wiring** Color coded
- Visible alarm** 360 degree flashing
- Audible alarm** Piezo buzzer
- Level control** Requires 4 floats rated at 2 amps
- Certifications** UL 508A

\* Requires sensor to be in pump.

Consult factory for other available options. Some options may require an increase in the enclosure size.

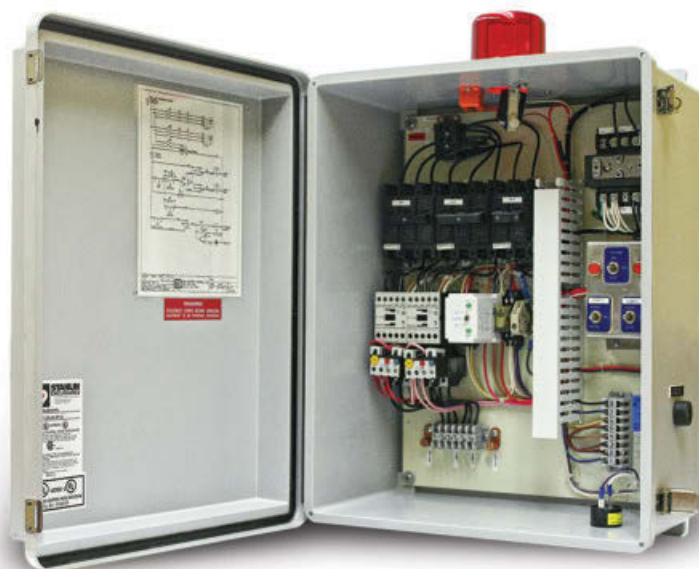
Volts	Phase	Amps	Part number
230	3	2.4 - 4	BP23S4XNM004
230	3	4 - 6	BP23S4XNM006
230	3	6 - 10	BP23S4XNM010
230	3	9 - 12	BP23S4XNM012
230	3	10 - 16	BP23S4XNM016
230	3	16 - 18	BP23S4XNM018
230	3	18 - 24	BP23S4XNM024
230	3	24 - 32	BP23S4XNM032
230	3	32 - 40	BP23S4XNM040

NOTE: Overloads must be located in pump.



# DUPLEX CONTROL PANELS

Three Phase, 230 volt,  
for Sewage, Effluent &  
Non-Clog Pumps



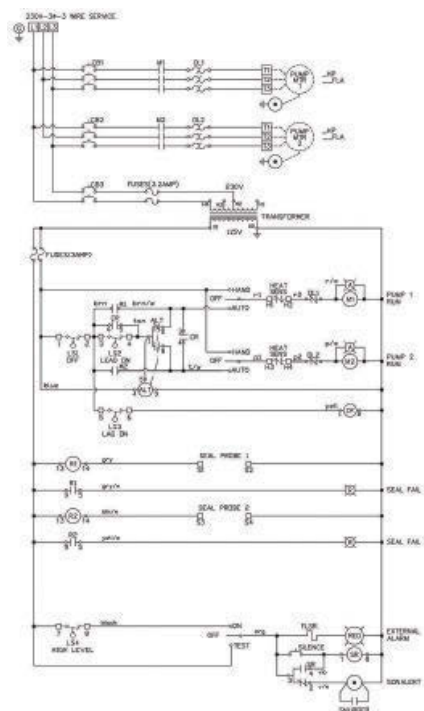
- Enclosure** Type 4X Polycarbon
- Circuit breaker** For pump and control circuit
- Motor starter** IEC rated with class 10 overload
- HOA switch** Three position toggle HP rated
- Alarm switch** Three position toggle HP rated
- Run light** Amber neon pilot light
- Transformer** With fuse protection
- Alternating relay** With lead selector switch
- Moisture sensor\*** Seal fail circuit and light
- Temp sensor\*** Heat sensor connections
- Bracket** Bright aluminum
- Fuse** Control and alarm sized at 3 amps
- Terminal strip** Box type lugs sectional
- Wiring** Color coded
- Visible alarm** 360 degree flashing
- Audible alarm** Piezo buzzer
- Level control** Requires 4 floats rated at 2 amps
- Certifications** UL 508A

\* Requires sensor to be in pump.

Consult factory for other available options. Some options may require an increase in the enclosure size.

Volts	Phase	Amps	Part number
230	3	2.4 - 4	BP23D4XNM004
230	3	4 - 6	BP23D4XNM006
230	3	6 - 10	BP23D4XNM010
230	3	9 - 12	BP23D4XNM012
230	3	10 - 16	BP23D4XNM016
230	3	16 - 18	BP23D4XNM018
230	3	18 - 24	BP23D4XNM024
230	3	24 - 32	BP23D4XNM032
230	3	32 - 40	BP23D4XNM040

NOTE: Overloads must be located in pump.





# SIMPLEX CONTROL PANELS

Three Phase, 460 volt,  
for Sewage, Effluent &  
Non-Clog Pumps



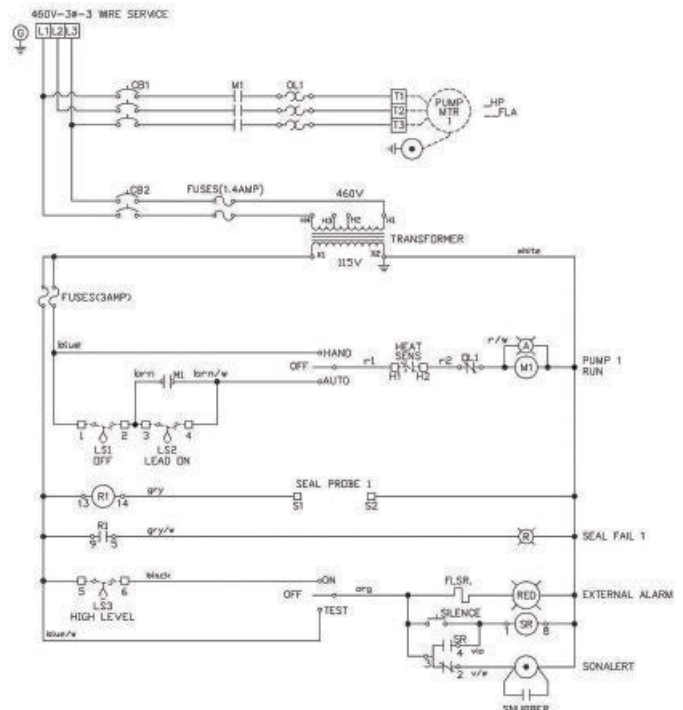
- Enclosure** Type 4X Polycarbon
- Manual motor protector** With class 10 overload
- Motor contactor** IEC rated
- HOA switch** Three position toggle HP rated
- Alarm switch** Three position toggle HP rated
- Run light** Amber neon pilot light
- Transformer** With fuse protection
- Moisture sensor\*** Seal fail circuit and light
- Temp sensor\*** Heat sensor connections
- Sub door** Bright aluminum
- Fuse** Control and alarm sized at 3 amps
- Terminal strip** Box type lugs sectional
- Wiring** Color coded
- Visible alarm** 360 degree flashing
- Audible alarm** Piezo buzzer
- Level control** Requires 3 floats rated at 2 amps
- Certifications** UL 508A

\* Requires sensor to be in pump.

Consult factory for other available options. Some options may require an increase in the enclosure size.

Volts	Phase	Amps	Part number
460	3	2.4 - 4	BP43S4XNM004
460	3	4 - 6	BP43S4XNM006
460	3	6 - 10	BP43S4XNM010
460	3	9 - 12	BP43S4XNM012
460	3	10 - 16	BP43S4XNM016
460	3	16 - 18	BP43S4XNM018
460	3	18 - 24	BP43S4XNM024
460	3	24 - 32	BP43S4XNM032
460	3	32 - 40	BP43S4XNM040

NOTE: Overloads must be located in pump.



# DUPLEX CONTROL PANELS

Three Phase, 460 volt,  
for Sewage, Effluent &  
Non-Clog Pumps



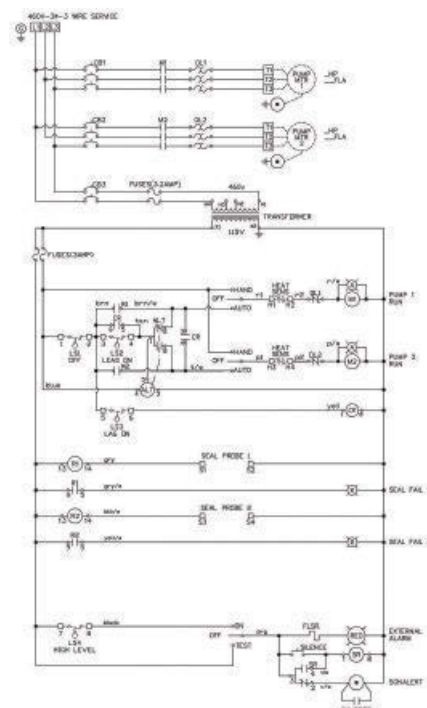
- Enclosure** Type 4X Polycarbon
- Manual motor protector** With class 10 overload
- Motor contactor** IEC rated
- HOA switch** Three position toggle HP rated
- Alarm switch** Three position toggle HP rated
- Run light** Amber neon pilot light
- Transformer** With fuse protection
- Alternating relay** With lead selector switch
- Moisture sensor\*** Seal fail circuit and light
- Temp sensor\*** Heat sensor connections
- Sub door** Bright aluminum
- Fuse** Control and alarm sized at 3 amps
- Terminal strip** Box type lugs sectional
- Wiring** Color coded
- Visible alarm** 360 degree flashing
- Audible alarm** Piezo buzzer
- Level control** Requires 4 floats rated at 2 amps
- Certifications** UL 508A








\*Requires sensor to be in pump.

Consult factory for other available options. Some options may require an increase in the enclosure size.

Volts	Phase	Amps	Part number
460	3	2.4 - 4	BP43D4XNM004
460	3	4 - 6	BP43D4XNM006
460	3	6 - 10	BP43D4XNM010
460	3	9 - 12	BP43D4XNM012
460	3	10 - 16	BP43D4XNM016
460	3	16 - 18	BP43D4XNM018
460	3	18 - 24	BP43D4XNM024
460	3	24 - 32	BP43D4XNM032
460	3	32 - 40	BP43D4XNM040

NOTE: Overloads must be located in pump.



Description	Model #	
Elapsed time meter	C1	
Cycle counter	C2	
Phase monitor	PM	
Voltage monitor	VM	
Aux. contacts	AX	
Loud horn	H1	
Lighting arrestor 1Ø	LA1	
Lighting arrestor 3Ø	LA3	