



2016 Spectrum 2 Product Brochure

The Spectrum 2 series features a new white aluminum housing with floating brackets and utilizes our MaxWhite™ FG screen material.



Spectrum 2 Series



The Spectrum 2 series features a new white aluminum housing with floating brackets and utilizes our MaxWhite™ FG screen material.



Screen Material:

- MaxWhite™ Fiberglass 1.1 Gain screen material is flat, durable, easy to clean and mildew resistant
- 180° wide-viewing angle for commercial and residential presentations
- 4 side black masking borders enhance contrast ratio and absorbs projector overshoot
- Black backing on material for sharper picture and clarity
- 4K Ultra HD and Active 3D ready
- Available in the following range of diagonal sizes:
 - 91" / 100" / 110" and 120" in 16:9 format

Casing and Installation:

- Streamlined aluminum casing with white enamel coating is moisture resistant
- Suspended ceiling installation capable
- Floating mount brackets allow easy alignment for a wall or ceiling installation
- Ships fully assembled with standard 3-prong power connection ready to Plug & Play

Control System:

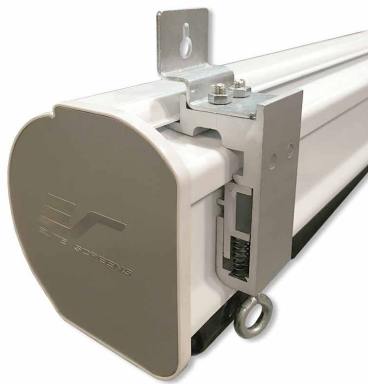
- 3-way integrated up/stop/down control switch
- Tubular motor allows swift operation with a superior weight tolerance and operational lifespan
- Optional Remote control kit: Wall box w/ RJ45 port, IR/RF remotes, 5-12 volt projector trigger cable, Wireless 5-12 volt Mono projector trigger cable, IR "eye" extension (Part# ZPM-RT)

Quality and Reliability:

- Flame Retardant: Complies with NFPA 701 Standards
- GREENGUARD® Indoor Air Quality and GREENGUARD® Children & Schools Certified
- 2-year warranty from defects in workmanship
- 3-year warranty offered through ENR-G program (Education, Non-profit, Religious, and Government/Military)



Spectrum 2 Series



Spectrum 2 Series

Model	Screen Diag. & Aspect Ratio	View Height (in)	View Width (in)	View Height (cm)	View Width (cm)	N.W. (lbs.)	G.W. (lbs.)	N.W. (kgs)	G.W. (Kgs)	Packaging Dimensions (LxHxW)	Gain	Screen Material	Case Color
SPM135VT	135"(4:3)	81.0	108.0	205.7	274.3	40.1	48.4	18.2	21.9	121.5"x6.5"x6.3"	1.1	MaxWhite™ FG	White
SPM150VT	150"(4:3)	90.0	120.0	228.6	304.8	41.8	53.8	19.0	24.4	134"6.2"x7"	1.1	MaxWhite™ FG	White
SPM91H-E12	91"(16:9)	44.6	79.4	112.5	200.0	18.6	26.2	8.4	11.9	89.5"x6.5"x6.3"	1.1	MaxWhite™ FG	White
SPM100H-E12	100"(16:9)	49.0	87.0	124.5	221.0	25.3	30.8	11.5	14.0	99.5"x6.0"x5.8"	1.1	MaxWhite™ FG	White
SPM110H-E12	110"(16:9)	53.9	95.9	135.1	240.0	28.6	34.7	13.0	15.7	110.5"x5"x5.5"	1.1	MaxWhite™ FG	White
SPM120H-E12	120"(16:9)	58.8	104.6	149.6	265.7	30.0	39.7	13.6	18.1	118.1"x6.5"x6.1"	1.1	MaxWhite™ FG	White
SPM138HT	138"(16:9)	67.7	120.3	171.8	305.5	40.9	53.2	18.5	24.1	133.7"x6.5"x6.3"	1.1	MaxWhite™ FG	White
SPM144HT	144"(16:9)	71.0	125.0	179.3	318.7	44.9	54.1	20.4	24.5	139"x6.5"x6.3"	1.1	MaxWhite™ FG	White
SPM165HT	165"(16:9)	81.0	144.0	205.4	365.2	48.3	61.3	21.9	27.8	157.3"x6.6"x6.3"	1.1	MaxWhite™ FG	White
SPM165HT-E8	165"(16:9)	81.0	144.0	205.4	365.2	48.3	61.3	21.9	27.8	157.3"x6.6"x6.3"	1.1	MaxWhite™ FG	White

Spectrum 2 Series Dimensions Table

Model	Screen Diag. & Aspect Ratio	View Width (A)	Weight Bar Length (A1)	A2	L/R Black Border (A3)	A4	Overall Length (A5)	View Height (B)	Top Black Drop (B1)	B2	Overall Height (B3)	C	C1	C2	C3
SPM135VT	135" (4:3)	2743	2923	70	50	2928	2938	2057	102	2229	2327	98	98	2338	28
SPM150VT	150" (4:3)	3048	3228	70	50	3233	3243	2286	102	2458	2556	98	98	2643	28
SPM91H-E12	91" (16:9)	2017	2173	70	38	2178	2188	1133	305	1508	1596	90	88	1588	28
SPM100H-E12	100" (16:9)	2214	2394	70	50	2399	2409	1245	305	1620	1708	90	88	1809	28
SPM110H-E12	110" (16:9)	2435	2615	70	50	2620	2630	1370	305	1745	1833	90	88	2030	28
SPM120H-E12	120" (16:9)	2657	2837	70	50	2842	2852	1494	305	1869	1957	90	88	2252	28
SPM138HT	138" (16:9)	3055	3235	70	50	3240	3250	1719	102	1891	1989	98	98	2650	28
SPM144HT	144" (16:9)	3188	3368	70	50	3373	3383	1793	102	1965	2063	98	98	2783	28
SPM165HT	165" (16:9)	3653	3833	70	50	3838	3848	2054	152	2276	2374	98	98	3248	28
SPM165HT-E8	165" (16:9)	3653	3833	70	50	3838	3848	2054	203	2734	2832	98	98	3248	28

Unit: mm

Model	Screen Diag. & Aspect Ratio	View Width (A)	Weight Bar Length (A1)	A2	L/R Black Border (A3)	A4	Overall Length (A5)	View Height (B)	Top Black Drop (B1)	B2	Overall Height (B3)	C	C1	C2	C3
SPM135VT	135" (4:3)	108.0	115.1	2.8	2.0	115.3	115.7	81.0	4.0	87.8	91.6	3.9	3.9	92.0	1.1
SPM150VT	150" (4:3)	120.0	127.1	2.8	2.0	127.3	127.7	90.0	4.0	96.8	100.6	3.9	3.9	104.1	1.1
SPM91H-E12	91" (16:9)	79.4	85.6	2.8	1.5	85.7	86.1	44.6	12.0	59.4	62.8	3.5	3.5	62.5	1.1
SPM100H-E12	100" (16:9)	87.2	94.3	2.8	2.0	94.4	94.8	49.0	12.0	63.8	67.2	3.5	3.5	71.2	1.1
SPM110H-E12	110" (16:9)	95.9	103.0	2.8	2.0	103.1	103.5	53.9	12.0	68.7	72.2	3.5	3.5	79.9	1.1
SPM120H-E12	120" (16:9)	104.6	111.7	2.8	2.0	111.9	112.3	58.8	12.0	73.6	77.0	3.5	3.5	88.7	1.1
SPM138HT	138" (16:9)	120.3	127.4	2.8	2.0	127.6	128.0	67.7	4.0	74.4	78.3	3.9	3.9	104.3	1.1
SPM144HT	144" (16:9)	125.5	132.6	2.8	2.0	132.8	133.2	70.6	4.0	77.4	81.2	3.9	3.9	109.6	1.1
SPM165HT	165" (16:9)	143.8	150.9	2.8	2.0	151.1	151.5	80.9	6.0	89.6	93.5	3.9	3.9	127.9	1.1
SPM165HT-E8	165" (16:9)	143.8	150.9	2.8	2.0	151.1	151.5	80.9	8.0	107.6	111.5	3.9	3.9	127.9	1.1

Unit: inch

Note: Data Error ±1". The listed measurements are for general reference only. Please contact Elite Screens to verify product design and dimensions before attempting to integrate its products with any structural or furniture modification. Although a manufacturer may offer product advice, it may be taken or disregarded at the integrator's discretion. Elite Screens will not be held responsible or be otherwise liable for faulty installations.

