



Barmesa[®]
Pumps



**Vertical Multi-Stage
Centrifugal Pumps**

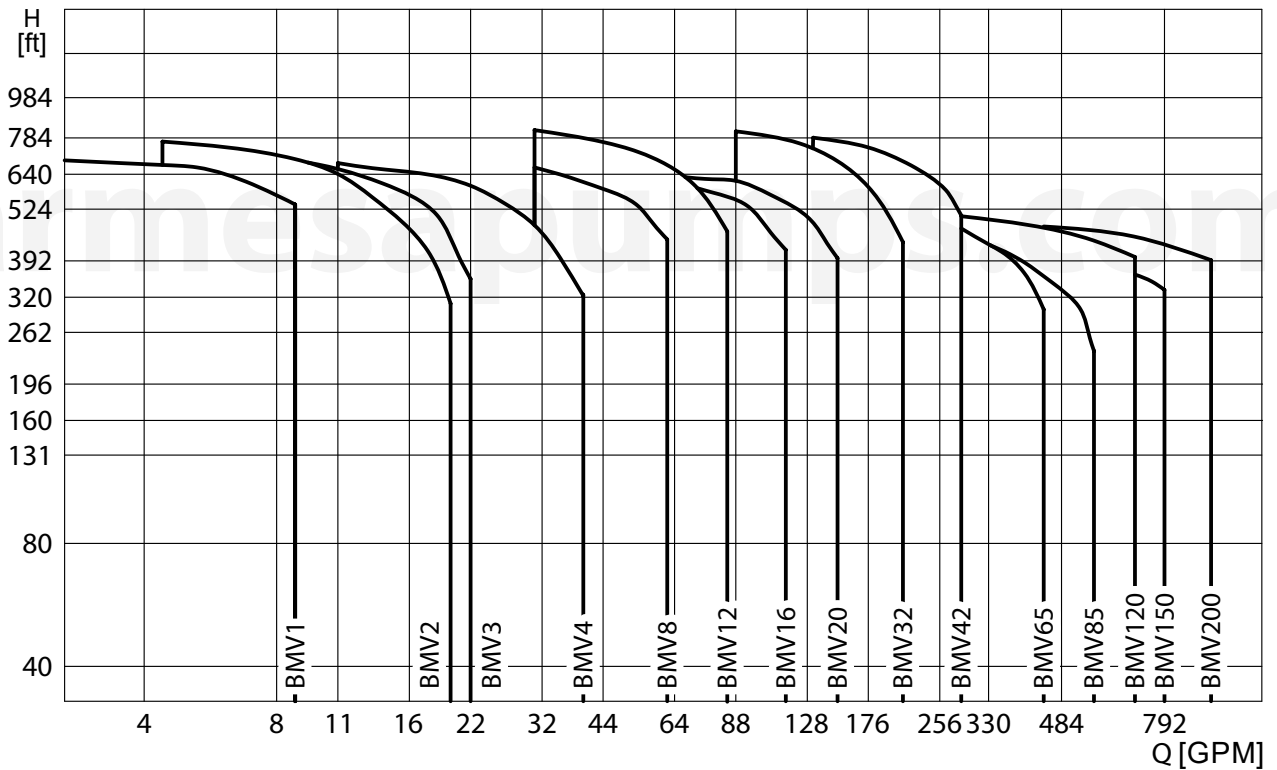
BMV

▶ VERTICAL MULTI-STAGE PUMP

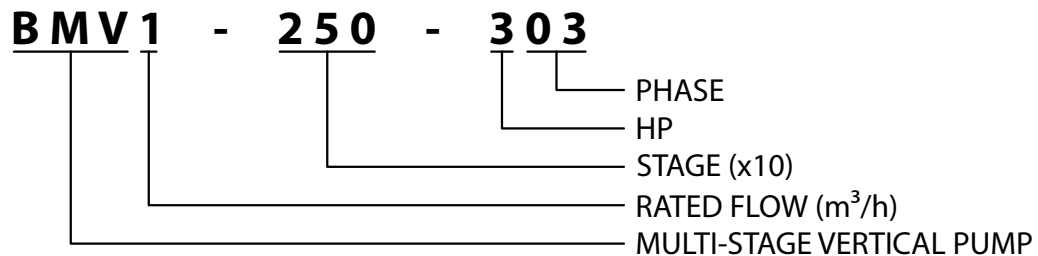
The BMV pump is designed to handle neutral clean liquids. It is a multifunctional product designed to transfer and boost water from various sources. The BMV pump is also designed to transfer and boost liquid at different temperature and with different flow rate and pressure.

- ▶ Pumped liquids: low viscosity, neutral, non-explosive liquids, not containing solid particles or fibers. The liquid must not attack the pump materials chemically.
- ▶ Boiler water supply and condensing system.
- ▶ Water treatment, filtration system.
- ▶ Food and beverage industries.
- ▶ Pressure boosting in high-rise buildings.
- ▶ Farmland irrigation, nursery irrigation and golf court irrigation.
- ▶ Industry cleaning system.
- ▶ Liquid transfer, circulation and boosting.
- ▶ Hot and cool water.

▶ PERFORMANCE CURVE



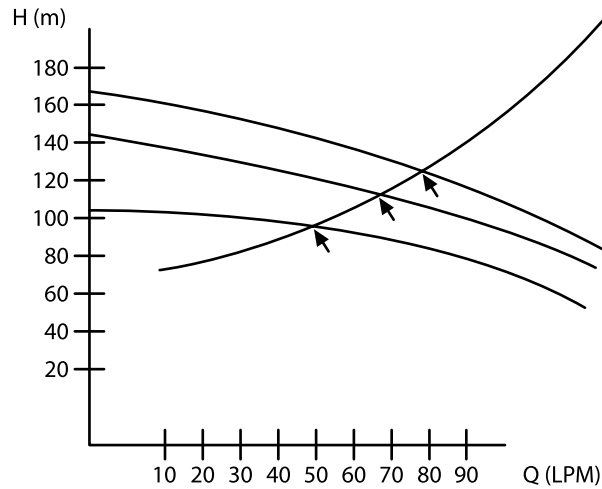
▶ NOMENCLATURE



▶ OPERATION IN PARALLEL

Connecting several pumps in parallel operation for higher pressure requirements will result in a more efficient system performance. Operating multiple pumps offers greater advantages versus running a single larger pump.

- Example: A dual or multiple pump system provides continuous water supply if and when a pump becomes inoperative. In the case of a pump failure, only part of the system flow is affected.



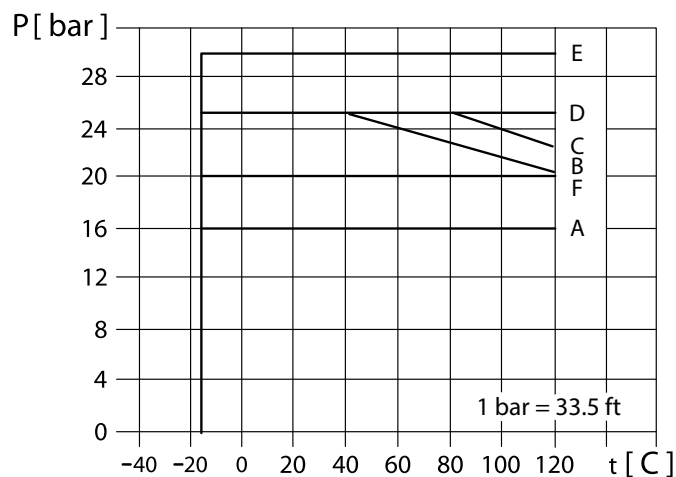
Two pumps or more can be connected for parallel operation if necessary.

▶ MOTOR

- Totally enclosed, fan-cooled, standard efficiency.
- 2 pole, 3 phase, 60 Hz, 230 / 460 volt.
- IP55 protection class.
- Class "F" insulation.

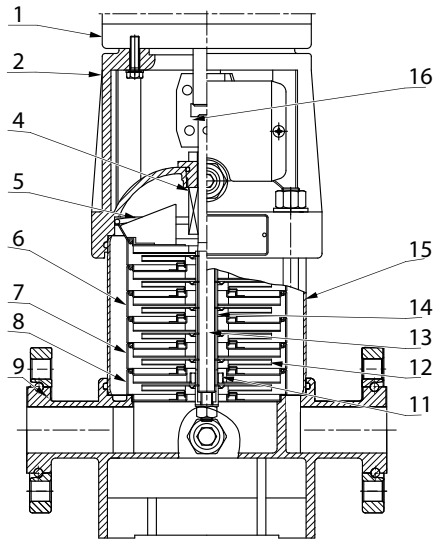
▶ MAXIMUM INLET PRESSURE

These values are shown in the next table. The inlet pressure plus the pressure of the pump with closed valve must be lesser than the maximum working pressure.

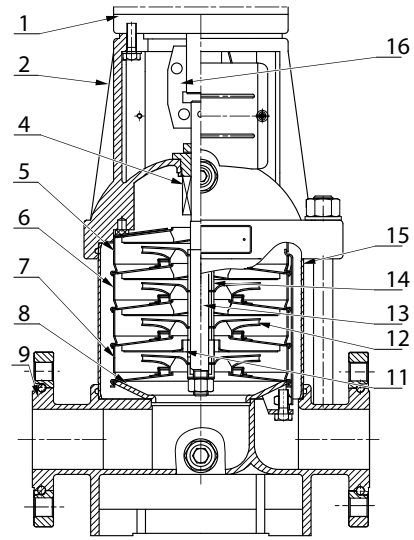


► MATERIAL

BMV1, BMV2, BMV3, BMV4



BMV8, BMV12, BMV16, BMV20

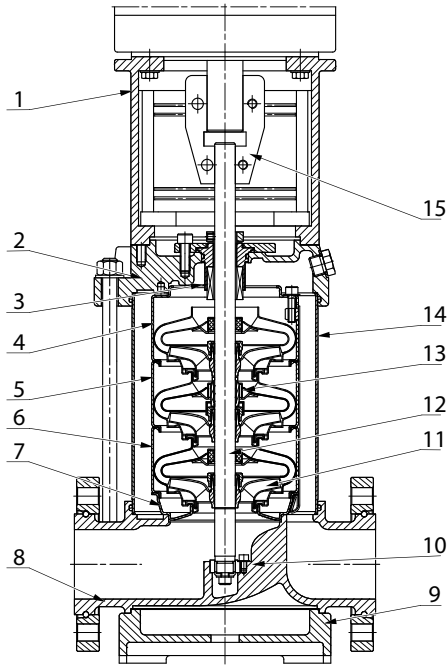


barmesapumps.com

Item	Name	Material	AISI/ASTM
1	Motor		
2	Pump Head	Cast iron	ASTM25B
4	Mechanical seal		
5	Top diffuser	Stainless steel	AISI304
6	Diffuser	Stainless steel	AISI304
7	Support diffuser	Stainless steel	AISI304
8	Inducer	Stainless steel	AISI304
9	Inlet and outlet chamber	Cast iron	ASTM25B
11	Bearing	Tungsten carbide	
12	Impeller	Stainless steel	AISI304
13	Shaft	Stainless steel	AISI304 AISI316L
14	Impeller sleeve	Stainless steel	AISI304
15	Cylinder	Stainless steel	AISI304
16	Coupling	Carbon steel	

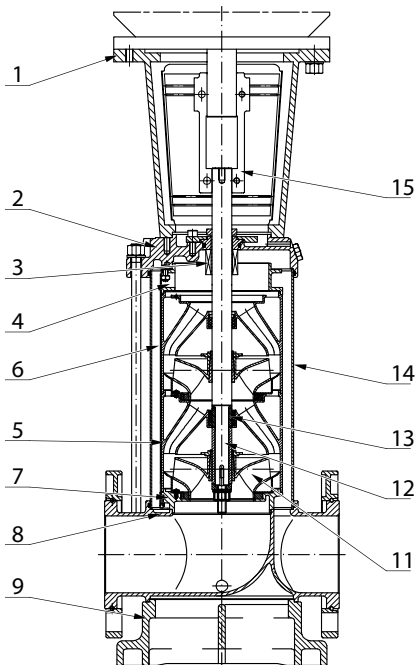
► MATERIAL

BMV32, BMV42, BMV65, BMV85



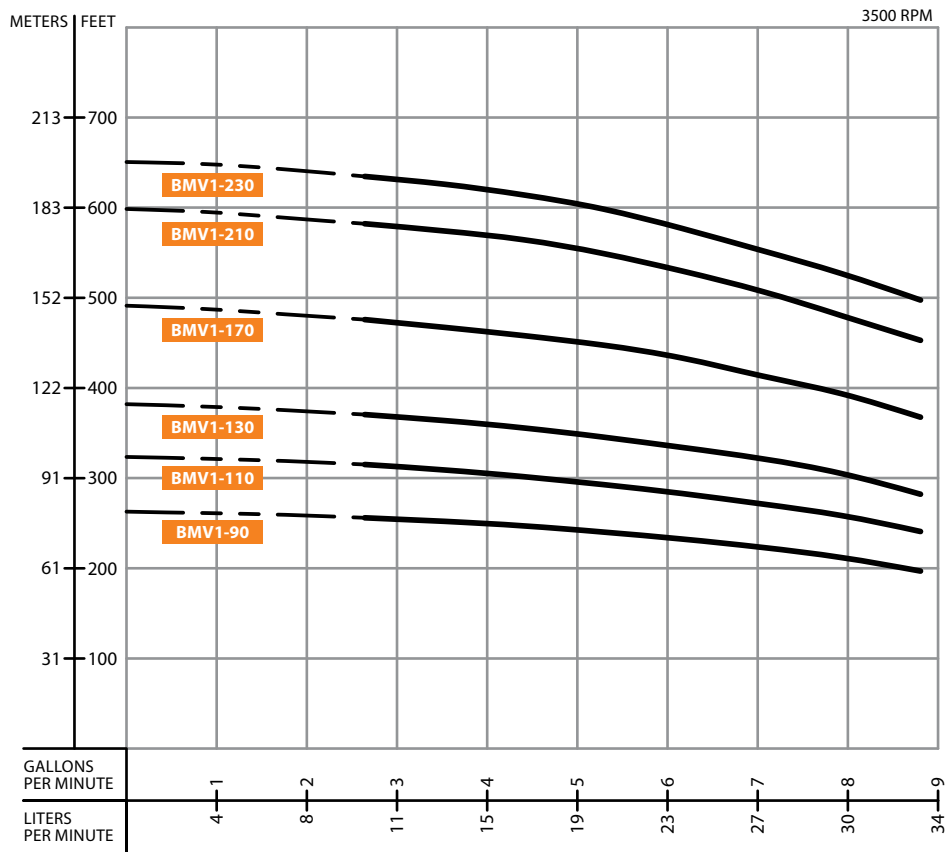
Item	Name	Material	AISI/ASTM
1	Bracket	Cast iron	ASTM25B
2	Pump head	Cast iron	ASTM25B
3	Mechanical seal		
4	Top diffuser	Stainless steel	AISI304
5	Support diffuser	Stainless steel	AISI304
6	Diffuser	Stainless steel	AISI304
7	Inducer	Stainless steel	AISI304
8	Inlet and outlet chamber	Cast iron	ASTM25B
9	Base plate	Cast iron	ASTM25B
10	Bottom bearing	Tungsten carbide	
11	Impeller	Stainless steel	AISI304
12	Shaft	Stainless steel	AISI304 AISI316L ANSI 431
13	Intermediate bearing	Tungsten carbide	
14	Cylinder	Stainless steel	AISI304
15	Coupling	Carbon steel	
	Rubber parts	NBR	

BMV120, BMV150

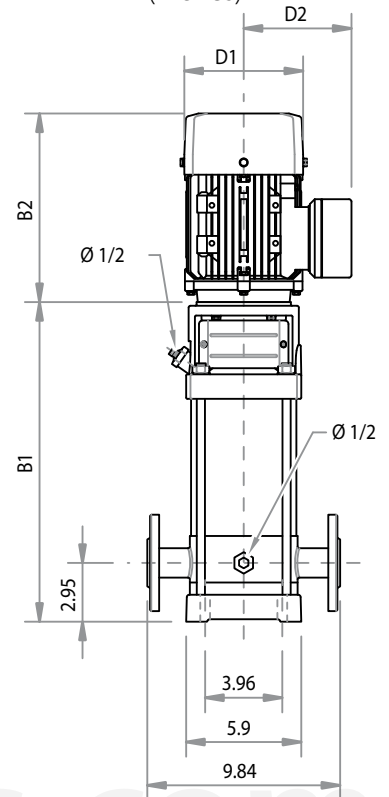


Item	Name	Material	AISI/ASTM
1	Bracket	Cast iron	ASTM25B
2	Pump head	Cast iron	ASTM 80-55-06
3	Mechanical seal		
4	Discharge	Stainless steel	AISI304
5	Support diffuser	Stainless steel	AISI304
6	Diffuser	Stainless steel	AISI304
7	Inducer	Stainless steel	AISI304
8	Inlet and outlet chamber	Cast iron	ASTM 80-55-06
9	Base plate	Cast iron	ASTM 80-55-06
11	Impeller	Stainless steel	AISI304
12	Shaft	Stainless steel	AISI304
13	Bearing	Tungsten carbide	
14	Cylinder	Stainless steel	AISI304
15	Coupling	Carbon steel	
	Rubber parts	NBR	

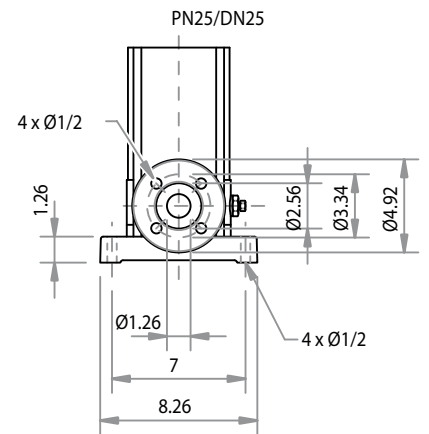
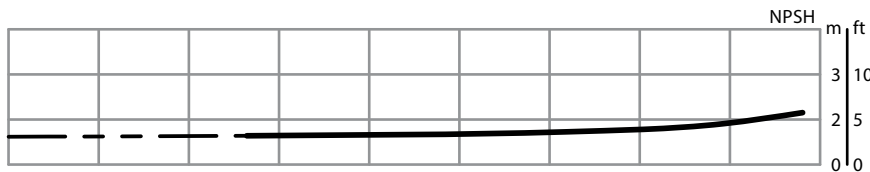
CURVE BMV1



Installation Diagram (inches)



barmesapumps.com



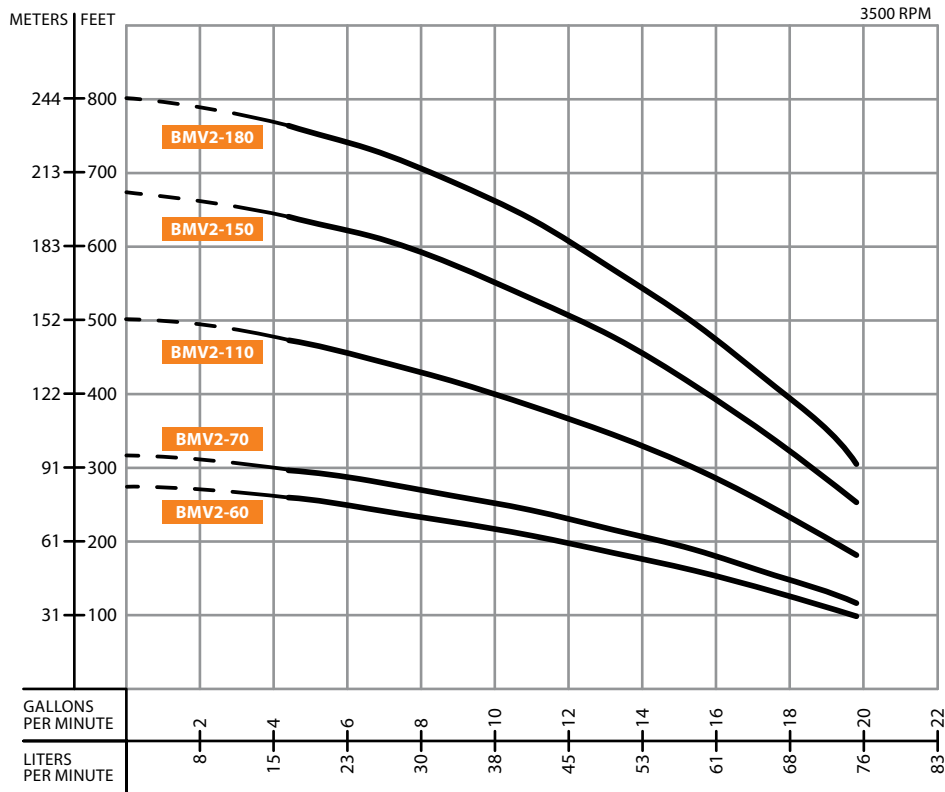
Performance Table

MODEL	STAGES	HP	Q (GPM)	H (ft)							
				2.6	3.5	4.4	5.3	6.2	7	7.9	8.8
BMV1-90-103	9	1		249.3	246.1	242.8	239.5	232.9	216.5	210.0	196.9
BMV1-110-153	11	1.5		311.7	305.1	295.3	285.4	278.9	265.7	255.9	239.5
BMV1-130-153	13	1.5		367.5	360.9	351.0	344.5	328.1	311.7	305.1	282.2
BMV1-170-203	17	2		472.4	462.6	456.0	449.5	433.1	406.8	393.7	367.5
BMV1-210-303	21	3		580.7	570.9	564.3	551.2	531.5	502.0	482.3	452.8
BMV1-230-303	23	3		633.2	623.4	616.8	603.7	570.9	547.9	528.2	498.7

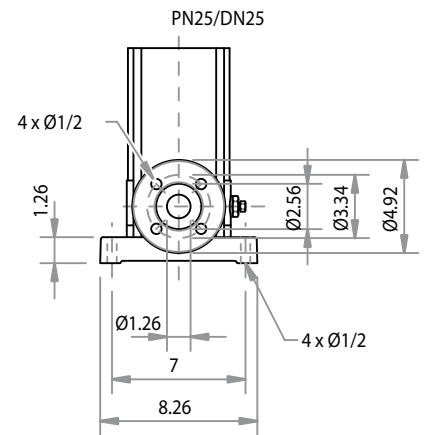
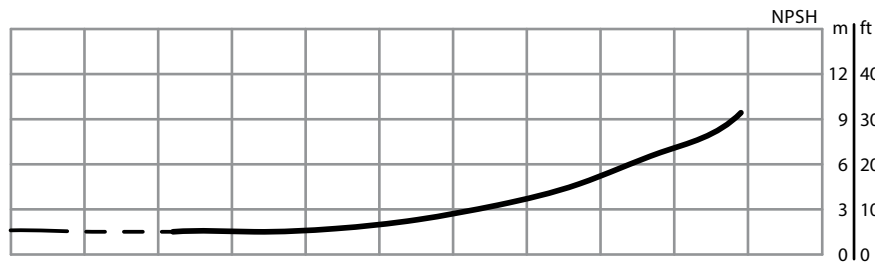
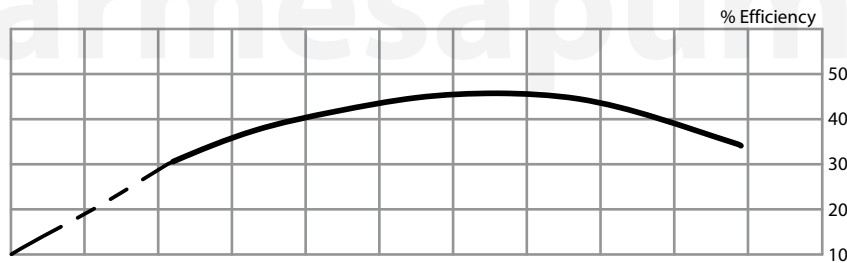
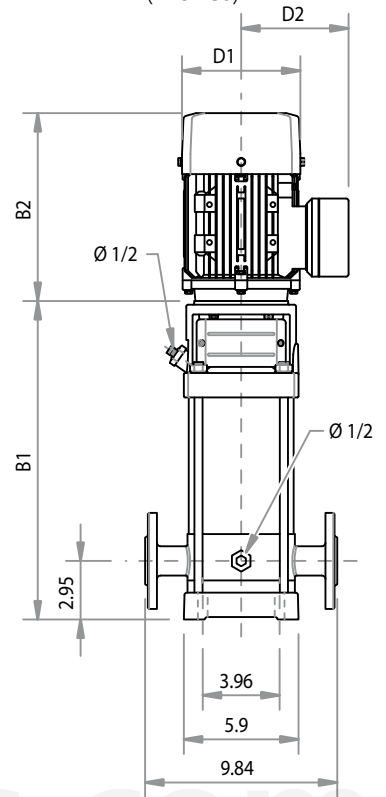
Size and Weight

Size (inches)						Weight (lb)
B1	B2	B1+B2	D1	D2		
15.5	9.6	25.2	6.7	5.6	61.7	
16.9	9.6	26.6	6.7	5.6	63.9	
18.3	9.6	28.0	6.7	5.6	68.3	
21.6	11.4	33.0	7.5	6.1	83.8	
24.4	11.4	35.8	7.5	6.1	92.6	
25.8	11.4	37.2	7.5	6.1	94.8	

CURVE BMV2



Installation Diagram (inches)



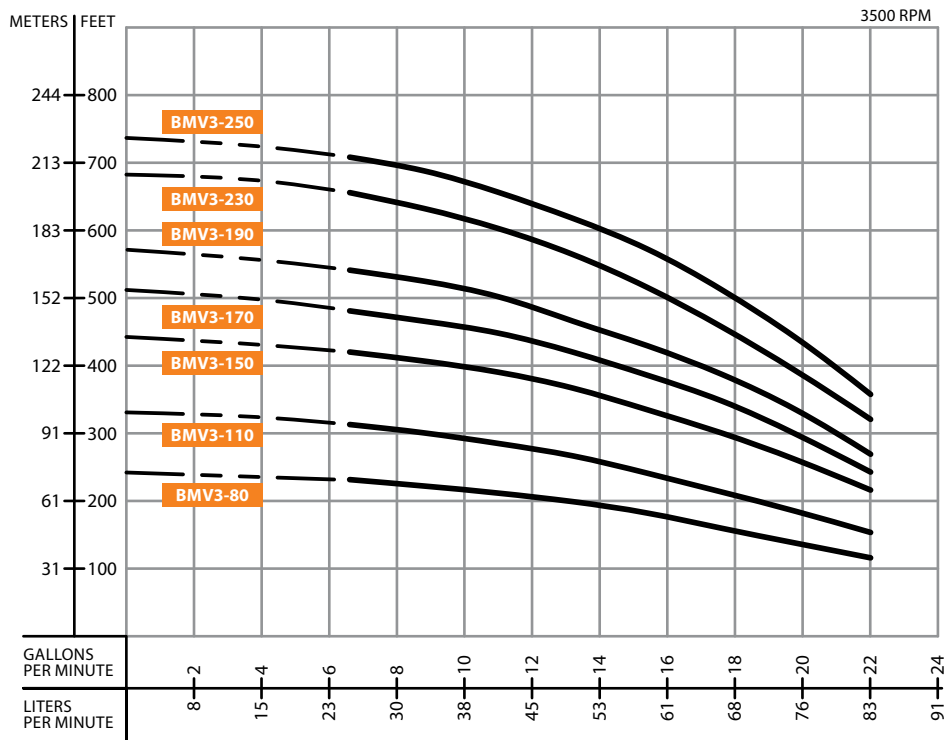
Performance Table

MODEL	STAGES	HP	Q (GPM)	H (ft)							
				4.4	6.6	8.8	11	13.2	15.4	17.6	19.8
BMV2-60-153	6	1.5		255.9	242.8	226.4	206.7	183.7	160.8	131.2	98.4
BMV2-70-203	7	2		298.6	282.2	265.7	242.8	216.5	187.0	154.2	114.8
BMV2-110-303	11	3		469.2	446.2	419.9	380.6	341.2	295.3	246.1	183.7
BMV2-150-403	15	4		639.8	610.2	577.4	524.9	465.9	410.1	337.9	252.6
BMV2-180-503	18	5.5		767.7	748.0	695.5	639.8	561.0	495.4	413.4	308.4

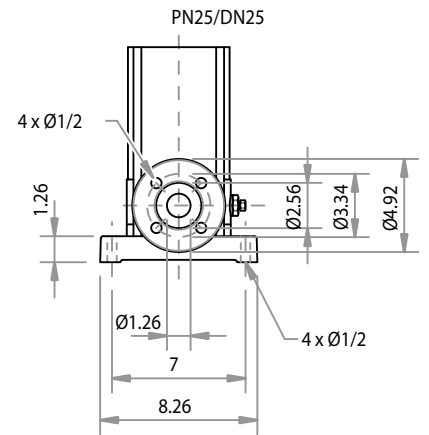
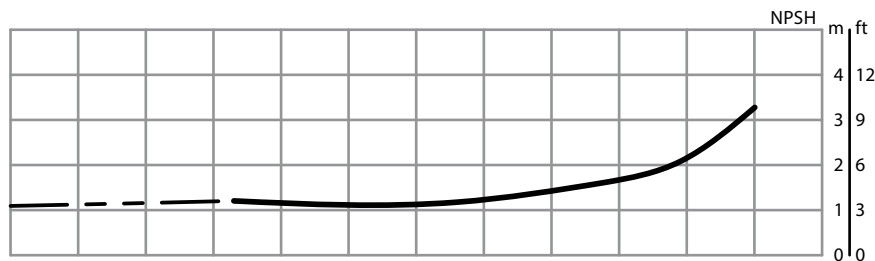
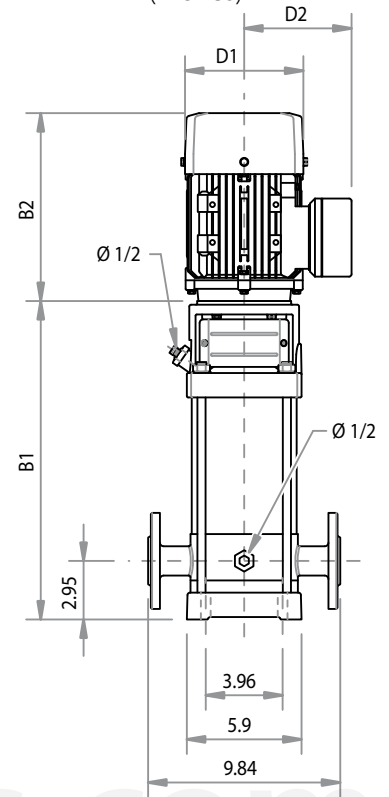
Size and Weight

B1	B2	B1+B2	Size (inches)			Weight (lb)
			D1	D2		
13.4	9.6	23.0	6.7	5.6	57.3	
14.5	11.4	25.9	7.5	6.1	70.5	
17.3	11.4	28.7	7.5	6.1	81.6	
20.6	12.4	33.0	7.8	6.5	99.2	
22.7	13.2	35.9	9.1	7.4	119.0	

CURVE BMV3



Installation Diagram (inches)



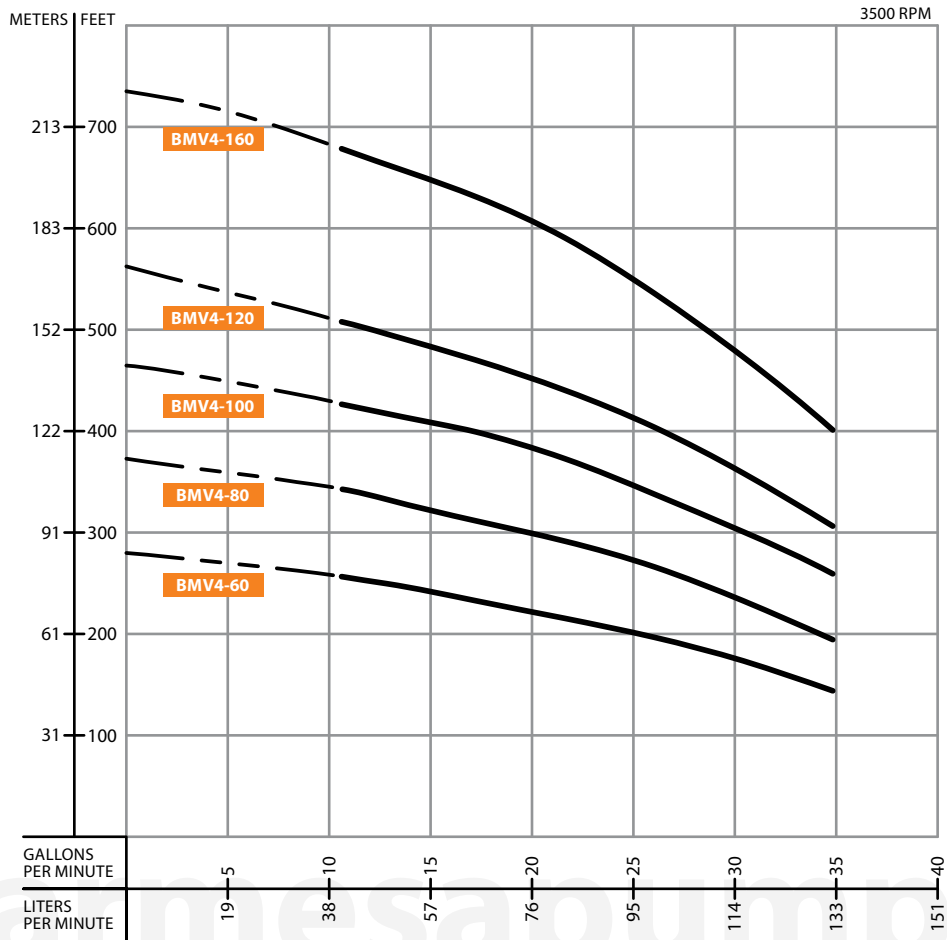
Performance Table

MODEL	STAGES	HP	Q (GPM)	H (ft)							
				6.6	8.8	11	13.2	15.4	17.6	19.8	22
BMV3-80-153	8	1.5		229.7	219.8	210.0	200.1	173.9	160.8	144.4	114.8
BMV3-110-203	11	2		315.0	301.8	285.4	269.0	242.8	226.4	193.6	157.5
BMV3-150-303	15	3		423.2	413.4	393.7	367.5	324.8	305.1	265.7	213.3
BMV3-170-303	17	3		482.3	469.2	449.5	419.9	374.0	347.8	298.6	242.8
BMV3-190-403	19	4		541.3	524.9	502.0	465.9	403.5	387.1	334.6	269.0
BMV3-230-403	23	4		656.2	636.5	607.0	570.9	505.2	465.9	400.3	321.5
BMV3-250-503	25	5.5		711.9	692.3	662.7	613.5	547.9	505.2	439.6	354.3

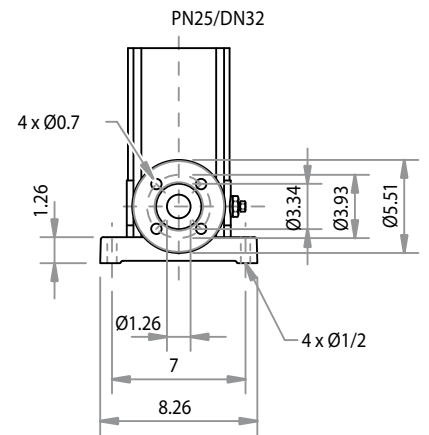
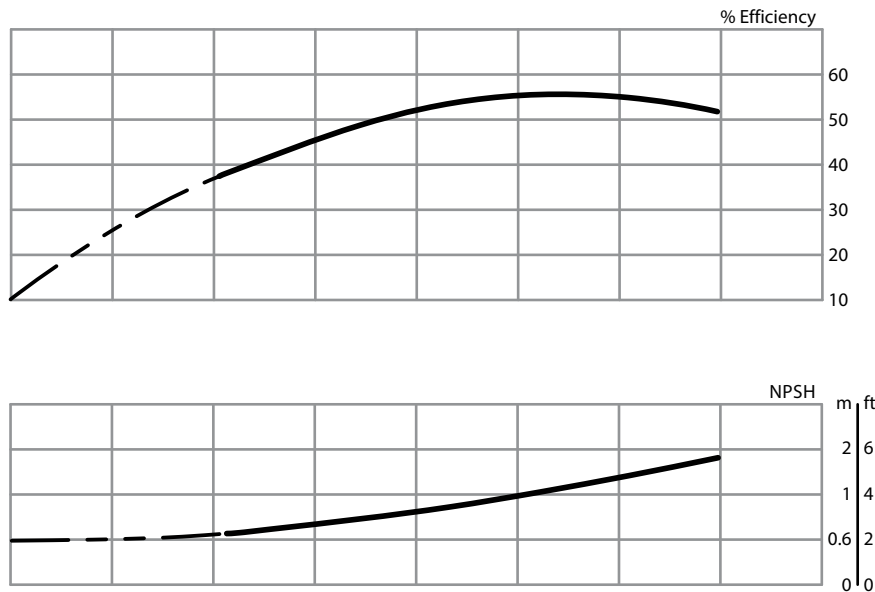
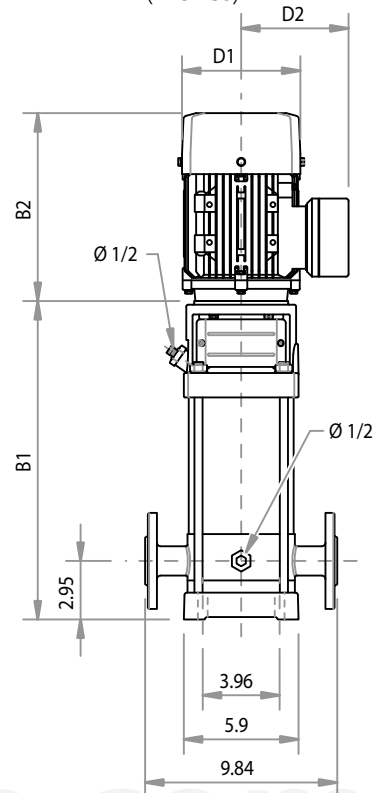
Size and Weight

Size (inches)						Weight (lb)
B1	B2	B1+B2	D1	D2		
14.8	9.6	24.4	6.7	5.6	59.5	
17.3	11.4	28.7	7.5	6.1	75.0	
20.2	11.4	31.6	7.5	6.1	86.0	
21.6	11.4	33.0	7.5	6.1	88.2	
23.4	12.4	35.8	7.8	6.5	105.8	
26.2	12.4	38.6	7.8	6.5	110.2	
27.6	13.2	40.8	9.1	7.4	127.9	

CURVE BMV4



Installation Diagram (inches)



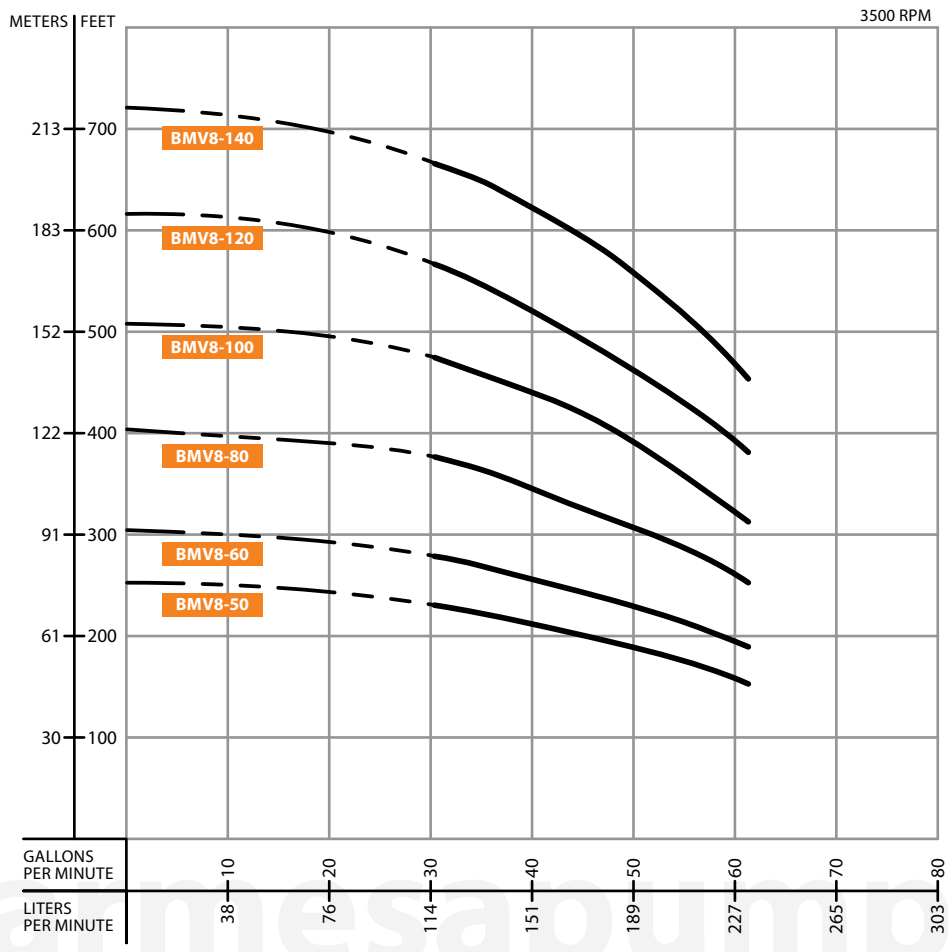
Performance Table

MODEL	STAGES	HP	Q (GPM)	H (ft)						
				11	13.2	17.6	22	26.4	30.8	35.2
BMV4-60-303	6	3		255.9	246.1	236.2	219.8	193.6	177.2	154.2
BMV4-80-403	8	4		341.2	328.1	311.7	295.3	259.2	236.2	206.7
BMV4-100-503	10	5.5		426.5	410.1	393.7	370.7	334.6	295.3	262.5
BMV4-120-503	12	5.5		511.8	492.1	475.7	446.2	400.3	357.6	315.0
BMV4-160-753	16	7.5		679.1	659.4	643.0	600.4	541.3	479.0	419.9

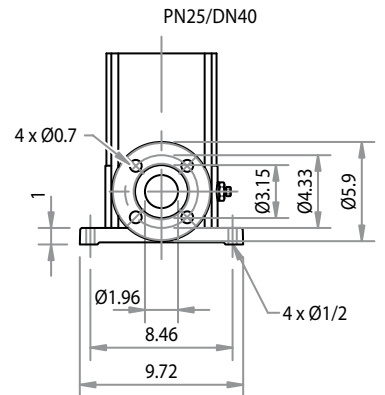
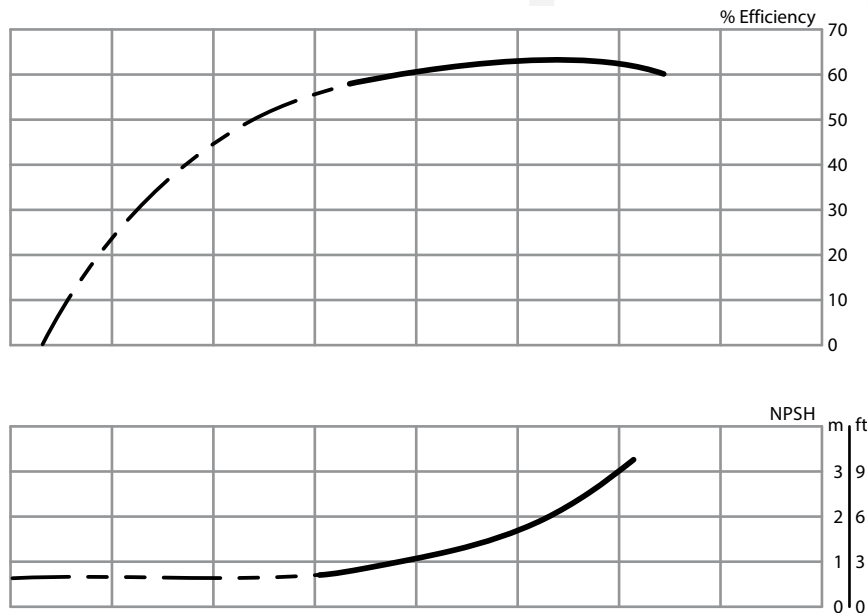
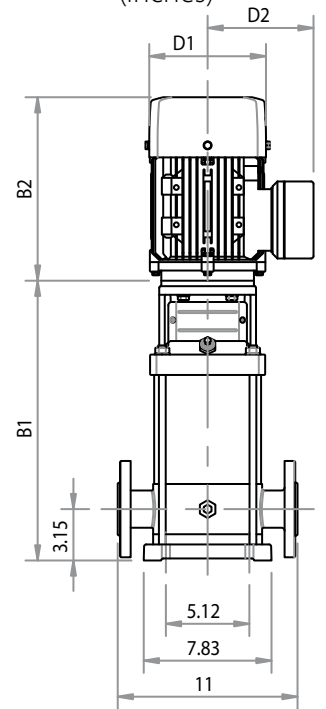
Size and Weight

Size (inches)					Weight (lb)
B1	B2	B1+B2	D1	D2	
15.9	11.4	27.3	7.5	6.1	77.2
18.4	13.6	32.0	7.8	6.5	92.6
20.6	13.2	33.7	9.1	7.4	112.4
22.7	13.2	35.9	9.1	7.4	114.6
27.7	16.9	44.6	10.2	8.2	145.5

CURVE BMV8



Installation Diagram (inches)



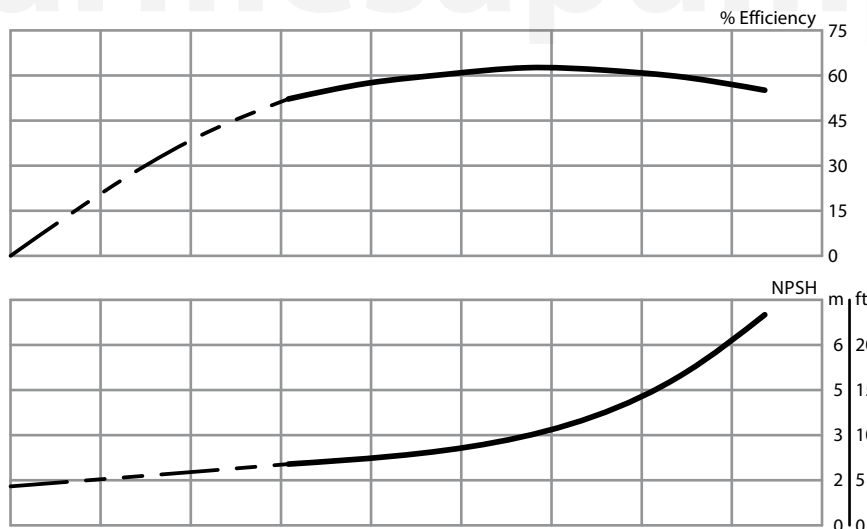
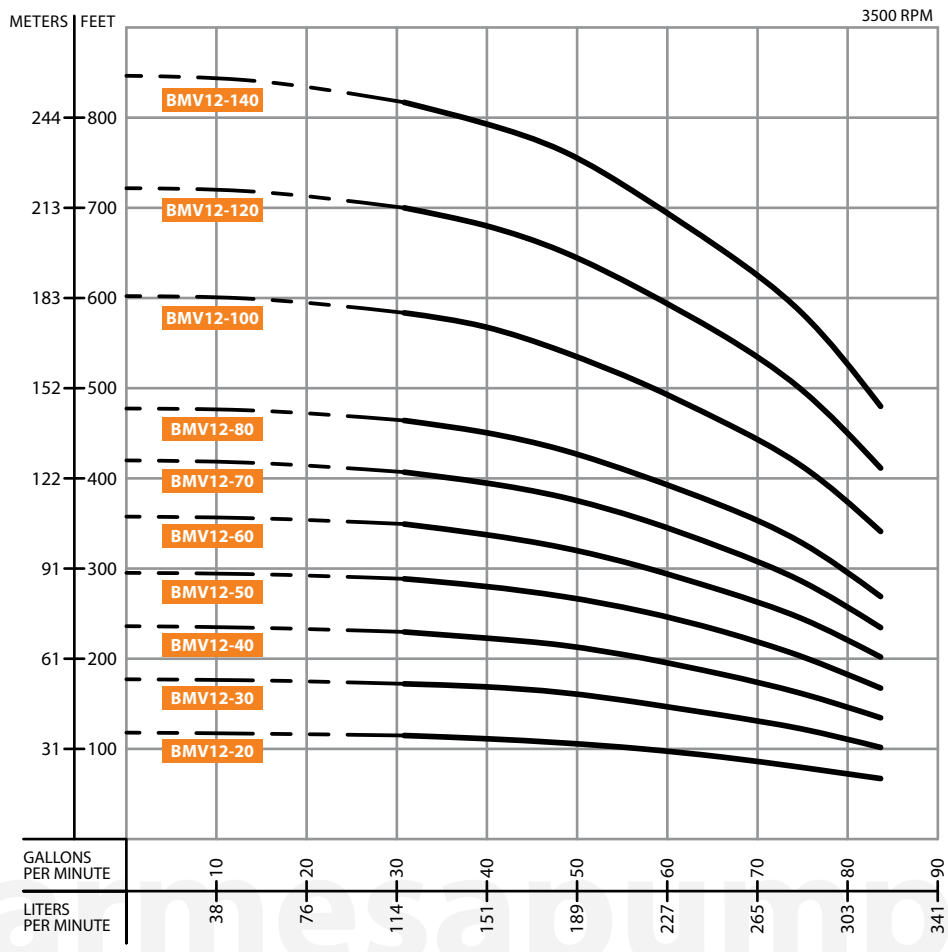
Performance Table

MODEL	STAGES	HP	Q (GPM)	Flow Rate (GPM)							
				30.8	35.2	39.6	44	48.4	52.8	57.2	61.6
BMV8-50-403	5	4	H (ft)	229.7	223.1	213.3	206.7	193.6	183.7	170.6	154.2
BMV8-60-503	6	5.5		278.9	269.0	255.9	249.3	236.2	223.1	203.4	187.0
BMV8-80-753	8	7.5		377.3	360.9	344.5	331.4	318.2	298.6	275.6	246.1
BMV8-100-1003	10	10		475.7	459.3	433.1	413.4	400.3	377.3	344.5	311.7
BMV8-120-1003	12	10		567.6	547.9	524.9	498.7	482.3	433.1	410.1	377.3
BMV8-140-1503	14	15		662.7	639.8	616.8	587.3	570.9	534.8	482.3	442.9

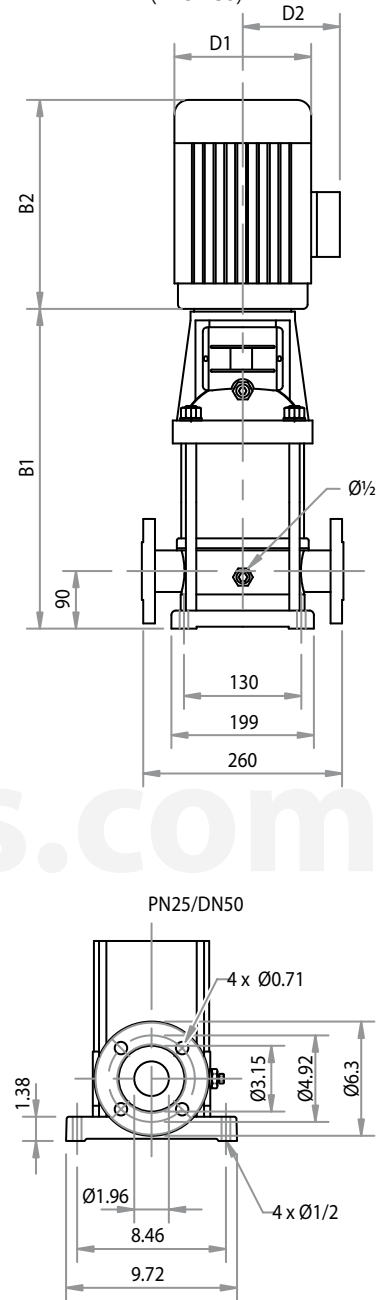
Size and Weight

Size (inches)						Weight (lb)
B1	B2	B1+B2	D1	D2		
18.0	12.4	30.4	7.8	6.5	110.2	
19.2	13.2	32.4	9.1	7.4	127.9	
22.3	16.9	39.3	10.2	8.2	156.5	
24.7	16.9	41.6	10.2	8.2	176.4	
27.0	16.9	44.0	10.2	8.2	180.8	
32.9	19.3	52.2	13.0	10.0	337.3	

CURVE BMV12



Installation Diagram (inches)



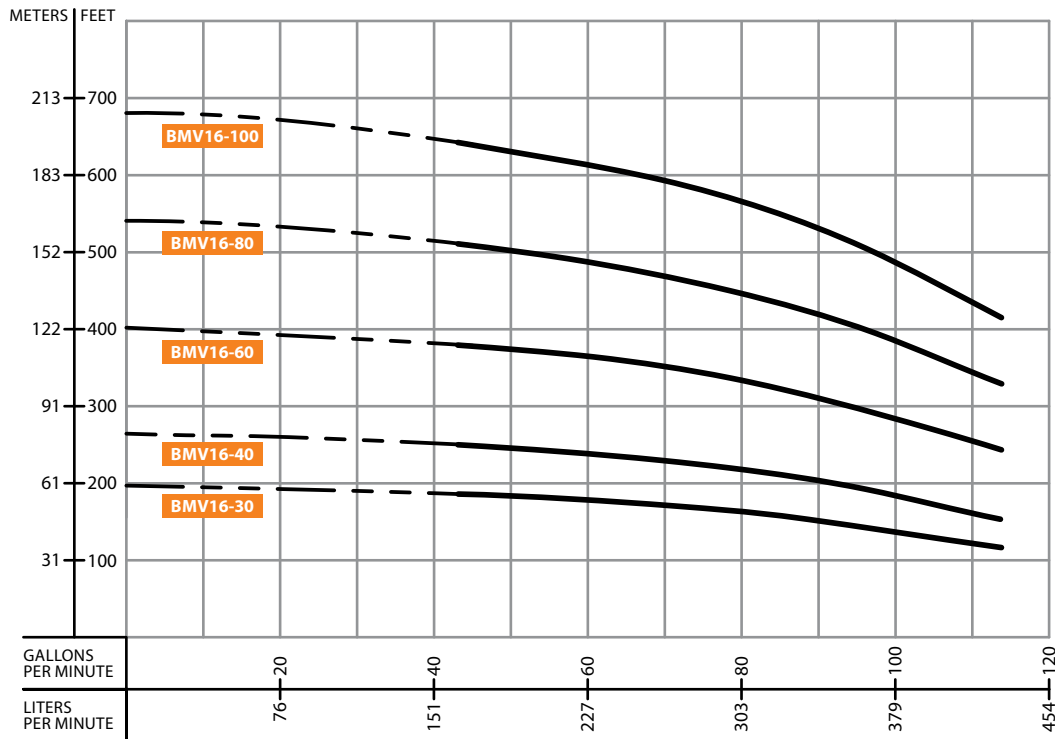
Performance Table

MODEL	STAGES	HP	Q (GPM)	H (ft)												
				30.8	39.6	48.4	52.8	57.2	66	74.8	83.7					
BMV12-20-303	2	3	114.8	111.5	106.6	105.0	100.1	88.6	80.4	67.3						
BMV12-30-503	3	5.5	172.2	169.0	164.0	157.5	150.9	136.2	123.0	101.7						
BMV12-40-753	4	7.5	229.7	223.1	214.9	210.0	201.8	180.4	162.4	134.5						
BMV12-50-753	5	7.5	288.7	282.2	269.0	262.5	252.6	229.7	203.4	167.3						
BMV12-60-1003	6	10	351.0	337.9	324.8	315.0	301.8	275.6	246.1	200.1						
BMV12-70-1003	7	10	406.8	397.0	380.6	367.5	351.0	318.2	288.7	232.9						
BMV12-80-1503	8	15	462.6	449.5	433.1	419.9	400.3	364.2	331.4	269.0						
BMV12-90-1503	9	15	-	-	-	-	-	-	-	-						
BMV12-100-1503	10	15	584.0	567.6	544.6	528.2	502.0	459.3	419.9	341.2						
BMV12-110-2003	11	20	-	-	-	-	-	-	-	-						
BMV12-120-2003	12	20	698.8	682.4	652.9	633.2	607.0	551.2	505.2	410.1						
BMV12-130-2003	13	30	-	-	-	-	-	-	-	-						
BMV12-140-2003	14	20	816.9	794.0	764.4	738.2	708.7	649.6	590.6	475.7						

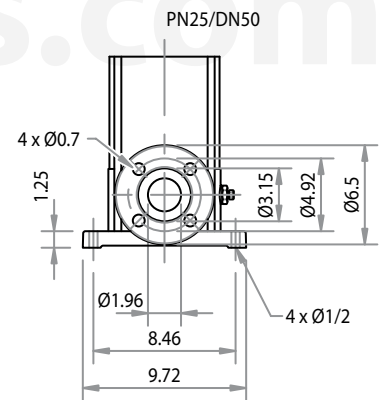
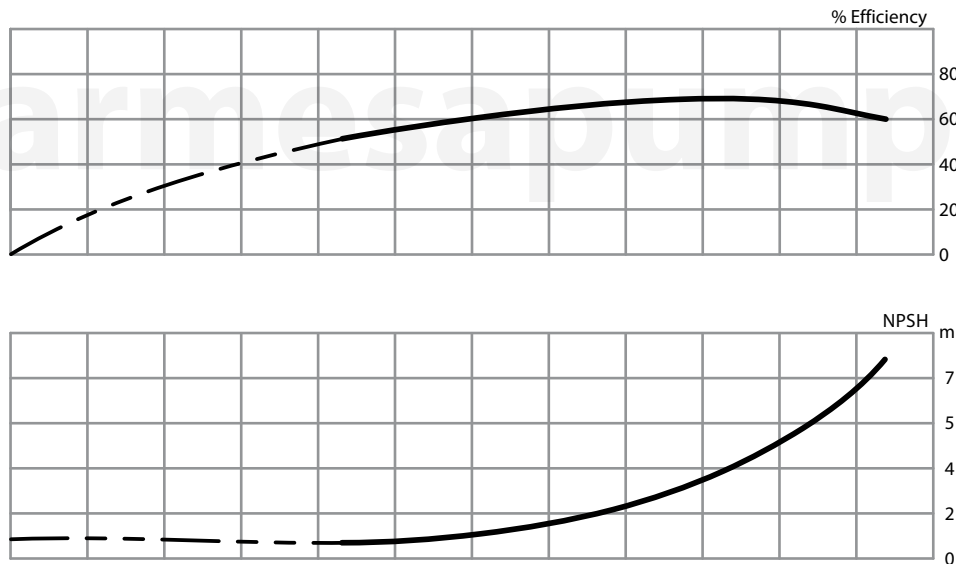
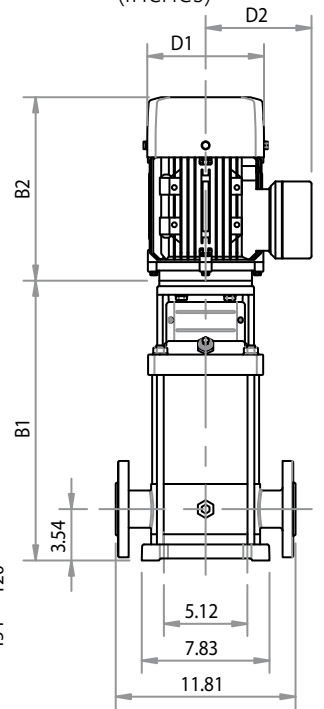
Size and Weight

Size (inches)						Weight (lb)
B1	B2	B1+B2	D1	D2		
14.4	11.4	25.9	7.5	6.1	90.4	
16.0	13.2	29.2	9.1	7.4	123.5	
18.0	16.9	34.9	10.2	8.2	152.1	
19.2	16.9	36.1	10.2	8.2	156.5	
20.4	16.9	37.3	10.2	8.2	169.8	
21.5	16.9	38.5	10.2	8.2	172.0	
26.2	19.3	45.5	13.0	10.0	324.1	
-	-	-	-	-	-	
28.5	19.3	47.8	13.0	10.0	332.9	
-	-	-	-	-	-	
30.9	19.3	50.2	13.0	10.0	361.6	
-	-	-	-	-	-	
33.3	19.3	52.6	13.0	10.0	368.2	

CURVE BMV16



Installation Diagram (inches)



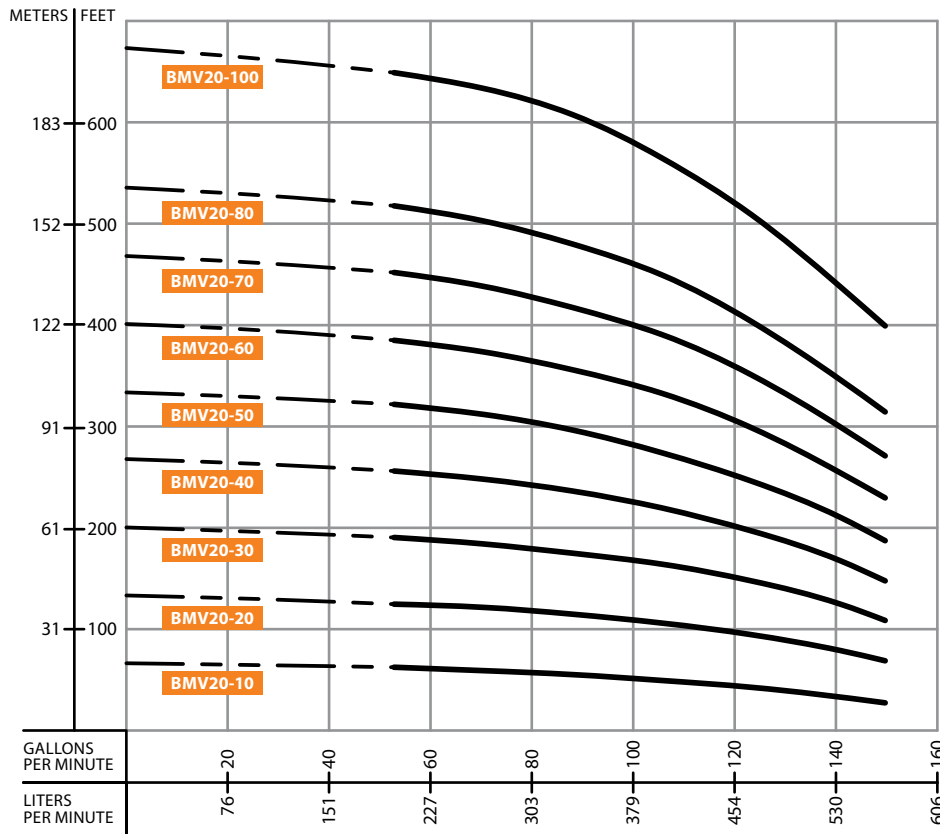
Size and Weight

Size (inches)					Weight (lb)
B1	B2	B1+B2	D1	D2	
18.6	16.9	35.5	10.2	8.2	149.9
20.4	16.9	37.3	10.2	8.2	165.3
27.4	19.3	46.7	13.0	10.0	330.7
30.9	19.3	50.2	13.0	10.0	359.4
34.4	21.7	56.1	13.0	10.0	410.1

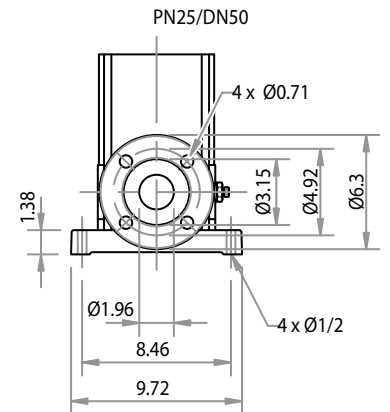
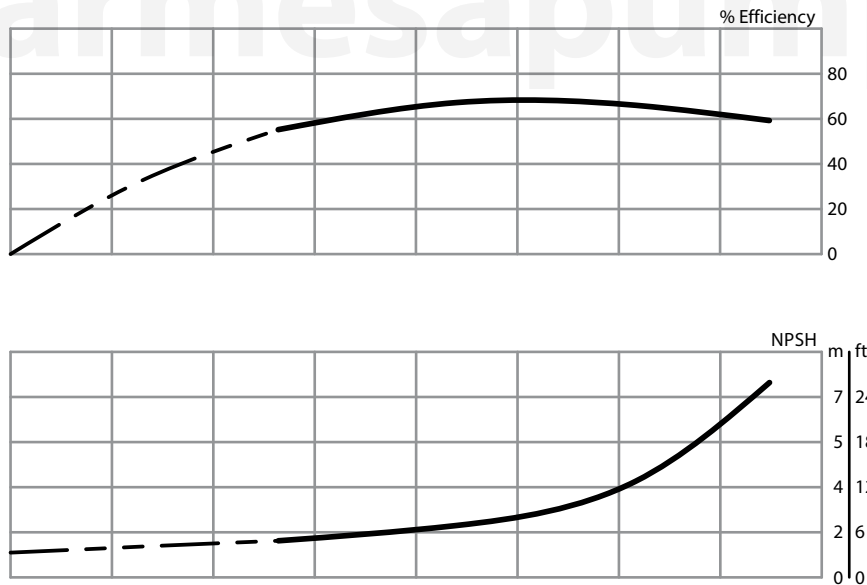
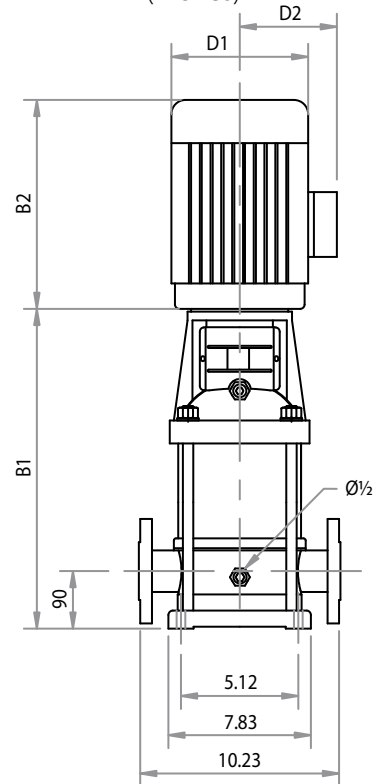
Performance Table

MODEL	STAGES	HP	Q (GPM)	H (ft)										
			44	52.8	61.6	70.4	79.3	88.1	96.9	105.7	114.5			
BMV16-30-753	3	7.5	187.0	183.7	180.4	177.2	167.3	157.5	147.6	131.2	118.1			
BMV16-40-1003	4	10	249.3	246.1	239.5	236.2	223.1	210.0	196.9	177.2	160.8			
BMV16-60-1503	6	15	377.3	370.7	364.2	354.3	334.6	315.0	298.6	269.0	246.1			
BMV16-80-2003	8	20	508.5	498.7	485.6	472.4	449.5	426.5	400.3	364.2	331.4			
BMV16-100-2503	10	25	646.3	629.9	613.5	593.8	570.9	541.3	502.0	456.0	416.7			

CURVE BMV20



Installation Diagram (inches)



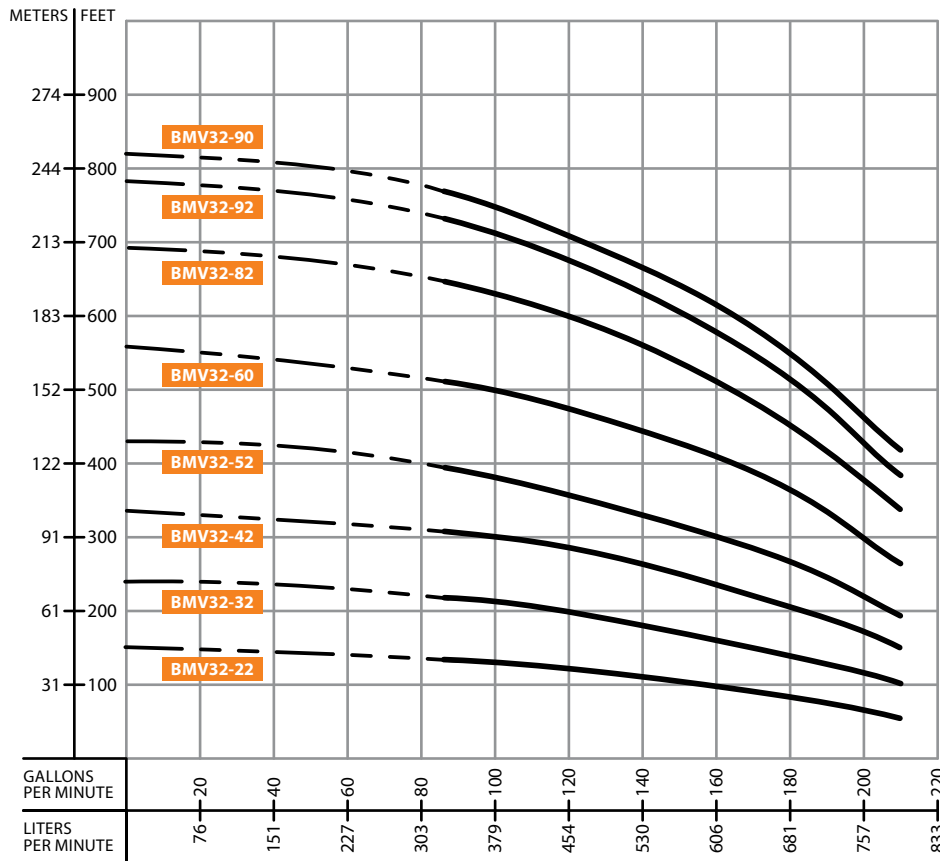
Performance Table

MODEL	STAGES	HP	Q (GPM)	H (ft)						
				52.8	70.4	88.1	105.7	123.3	140.9	149.7
BMV20-10-303	1	3		62.3	59.1	55.8	49.2	42.7	32.8	27.9
BMV20-20-503	2	5.5		124.7	121.4	114.8	105.0	95.1	78.7	68.9
BMV20-30-753	3	7.5		190.3	183.7	173.9	164.0	147.6	124.7	108.3
BMV20-40-1003	4	10		255.9	246.1	236.2	219.8	196.9	167.3	147.6
BMV20-50-1503	5	15		321.5	308.4	295.3	278.9	246.1	210.0	187.0
BMV20-60-1503	6	15		387.1	370.7	354.3	334.6	298.6	252.6	229.7
BMV20-70-2003	7	20		452.8	436.4	416.7	390.4	351.0	298.6	272.3
BMV20-80-2003	8	20		518.4	502.0	479.0	449.5	403.5	344.5	315.0
BMV20-100-2503	10	25		649.6	633.2	607.0	564.3	508.5	436.4	400.3

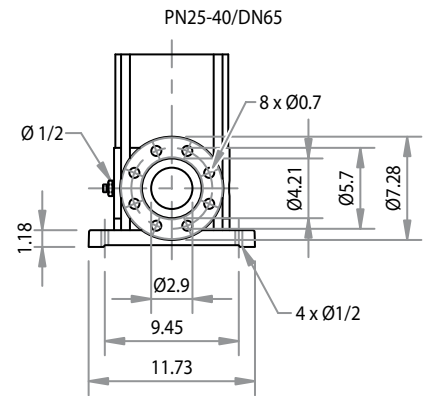
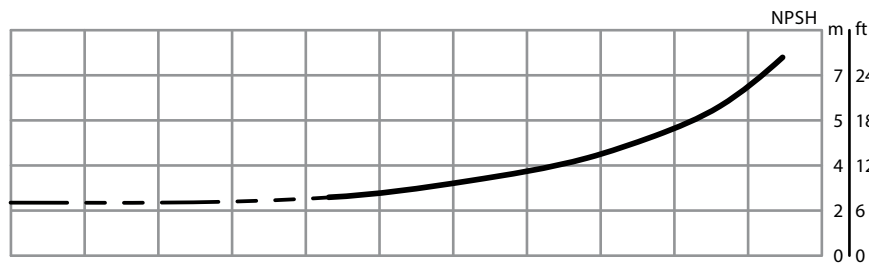
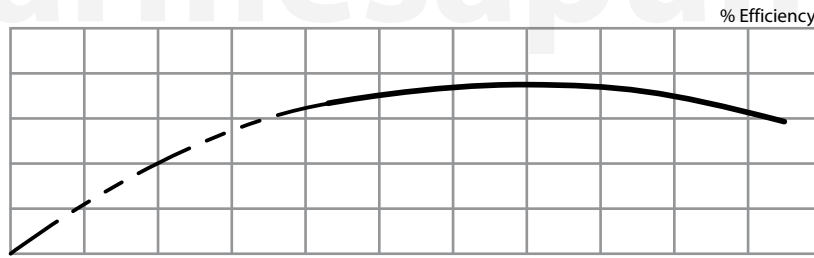
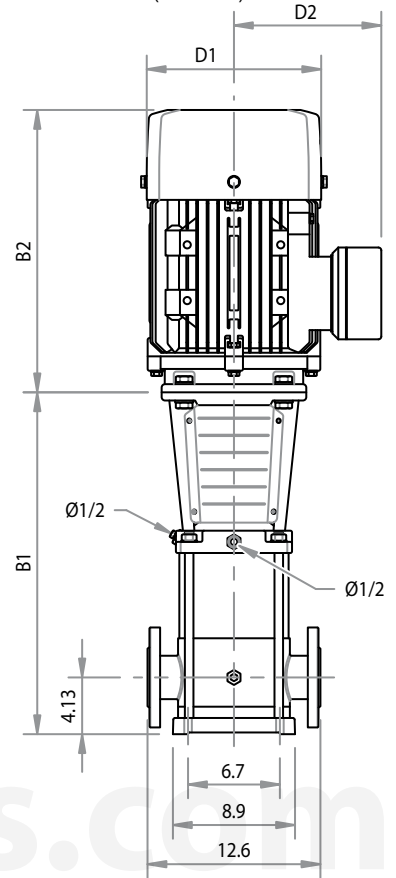
Size and Weight

Size (inches)					Weight (lb)
B1	B2	B1+B2	D1	D2	
15.6	11.4	27.0	7.5	6.1	90.4
16.0	13.2	29.2	9.1	7.4	123.5
18.6	16.9	35.5	10.2	8.2	152.1
20.4	16.9	37.3	10.2	8.2	174.2
25.6	19.3	44.9	13.0	10.0	326.3
27.4	19.3	46.7	13.0	10.0	330.7
29.1	19.3	48.4	13.0	10.0	357.1
30.9	19.3	50.2	13.0	10.0	359.4
34.4	21.7	56.1	13.0	10.0	412.3

CURVE BMV32



Installation Diagram (inches)



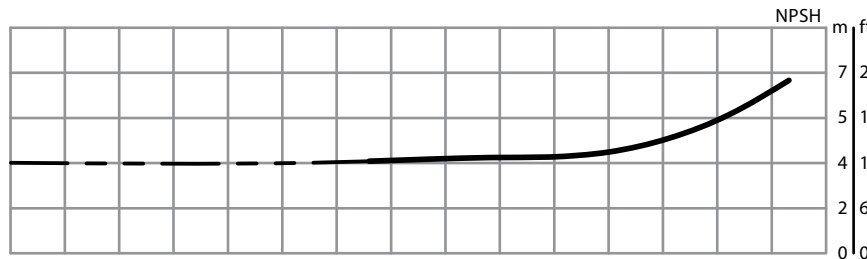
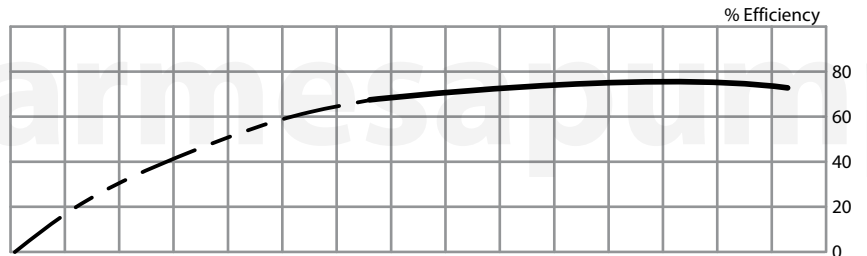
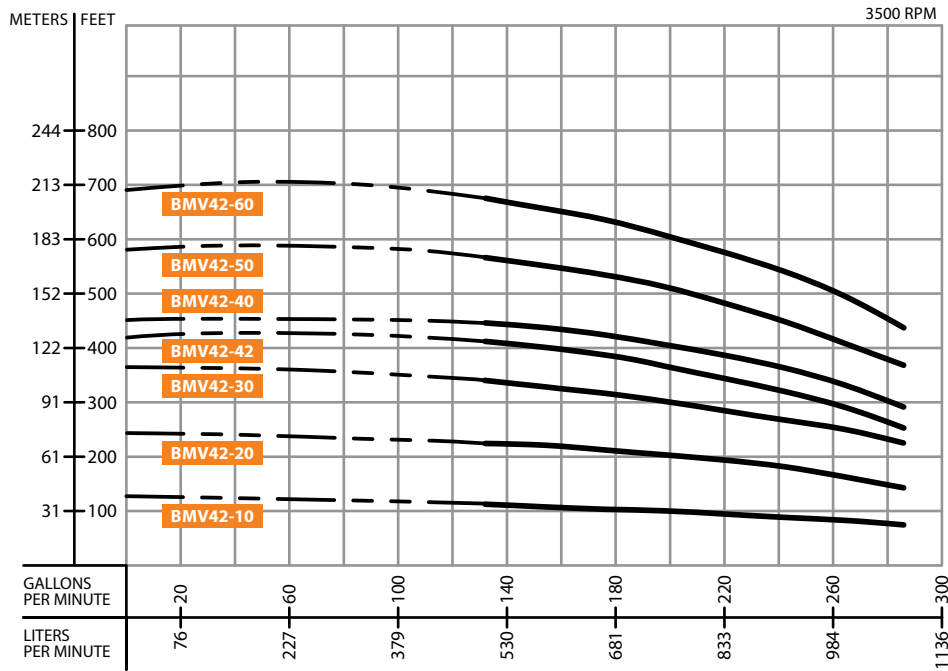
Performance Table

MODEL	STAGES	HP	Q (GPM)	H (ft)												
				88.1	105.7	123.3	140.9	158.5	176.1	193.7	211.3					
BMV32-22-753	2	7.5		134.5	131.2	124.7	114.8	101.7	88.6	72.2	55.8					
BMV32-32-1003	3	10		219.8	210.0	200.1	187.0	170.6	150.9	128.0	101.7					
BMV32-42-1503	4	15		308.4	298.6	285.4	265.7	239.5	213.3	183.7	147.6					
BMV32-52-2003	5	20		390.4	377.3	357.6	334.6	308.4	275.6	239.5	193.6					
BMV32-60-2503	6	25		508.5	492.1	472.4	446.2	413.4	374.0	328.1	265.7					
BMV32-82-3003	8	30		643.0	623.4	597.1	564.3	521.7	469.2	406.8	334.6					
BMV32-92-4003	9	40		731.6	708.7	675.9	636.5	587.3	531.5	465.9	383.9					
BMV32-90-4003	9	40		767.7	741.5	708.7	669.3	620.1	564.3	498.7	416.7					

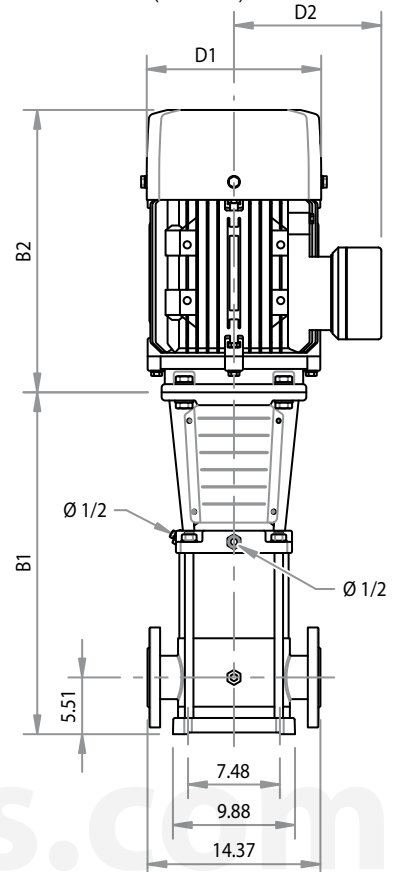
Size and Weight

Size (inches)					Weight (lb)
B1	B2	B1+B2	D1	D2	
22.6	16.9	39.6	10.2	8.2	209.4
25.4	19.3	44.7	13.0	10.0	229.3
32.3	19.3	51.6	13.0	10.0	388.0
35.0	19.3	54.3	13.0	10.0	421.1
37.8	21.7	59.4	13.0	10.0	476.2
43.3	23.2	66.5	15.7	12.2	571.0
46.1	26.0	72.0	15.7	12.2	703.3
46.1	26.0	72.0	15.7	12.2	703.3

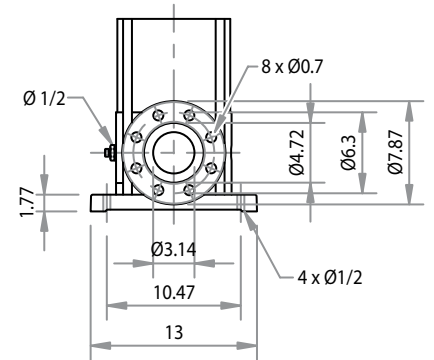
CURVE BMV42



Installation Diagram (inches)



PN16-25/DN80



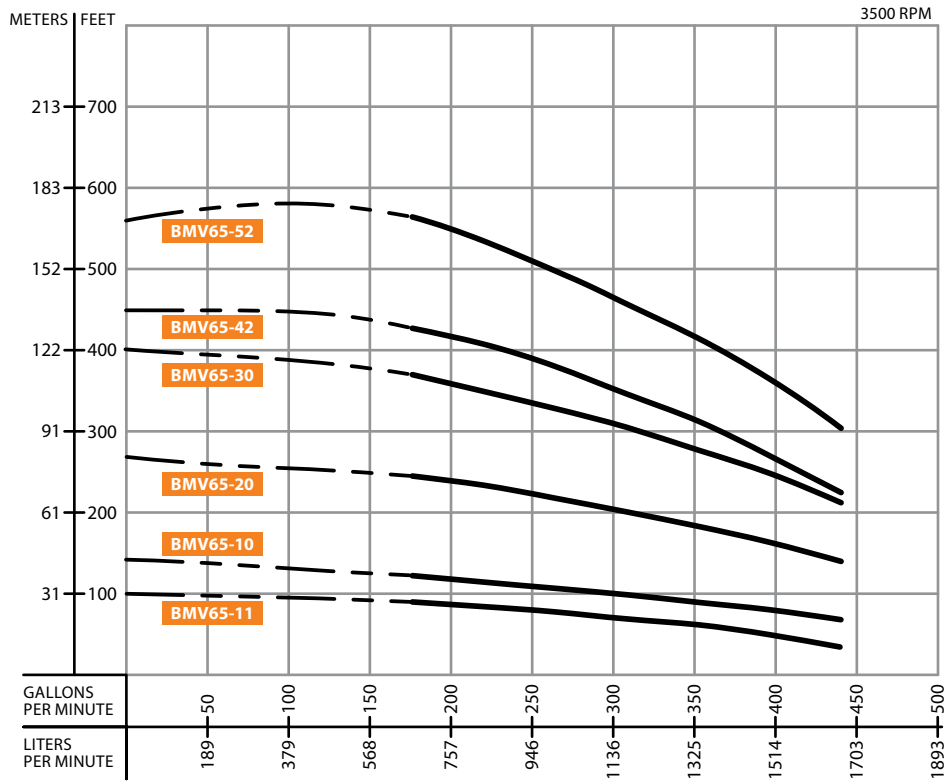
Size and Weight

Size (inches)					Weight
B1	B2	B1+B2	D1	D2	(lb)
22.1	16.9	39.0	10.2	8.2	233.7
29.4	19.3	48.7	13.0	10.0	414.5
32.6	21.7	54.3	13.0	10.0	469.6
35.7	23.2	59.0	14.2	11.2	557.8
35.7	26.0	61.7	15.7	12.2	681.2
38.9	26.0	64.9	15.7	12.2	690.0
42.0	26.0	68.0	15.7	12.2	749.6

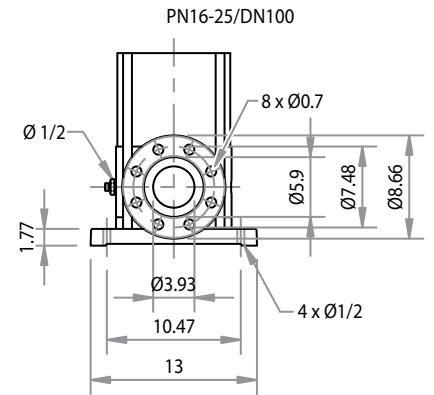
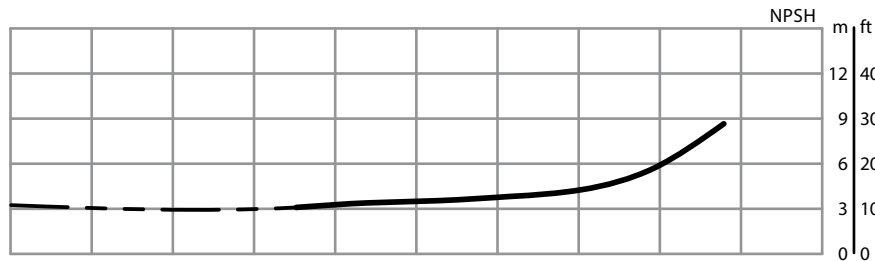
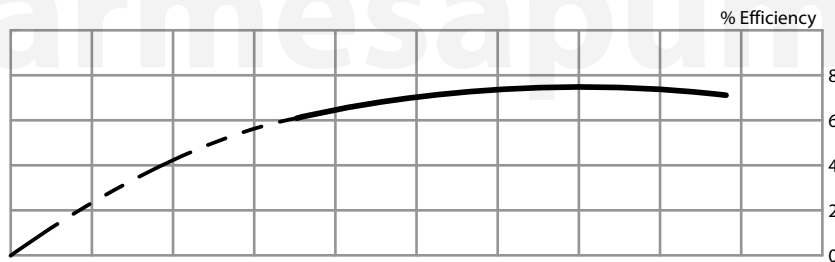
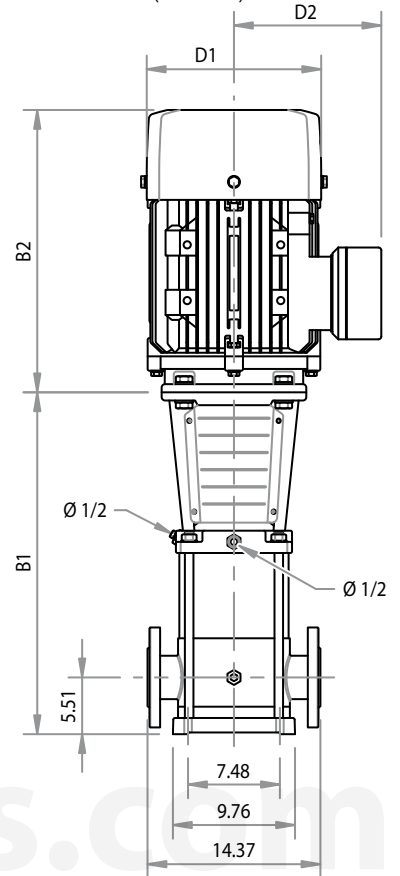
Performance Table

MODEL	STAGES	HP	Q (GPM)	H (ft)								
				132.1	154.1	176.1	184.9	198.1	220.1	242.2	264.2	286.2
BMV42-10-1003	1	10		111.5	108.3	105.0	103.3	98.4	95.1	88.6	82.0	72.2
BMV42-20-2003	2	20		226.4	219.8	213.3	206.7	200.1	193.6	180.4	164.0	144.4
BMV42-30-2503	3	25		334.6	328.1	318.2	311.7	301.8	288.7	269.0	249.3	223.1
BMV42-42-3003	4	30		410.1	397.0	387.1	377.3	367.5	344.5	321.5	292.0	255.9
BMV42-40-4003	4	40		446.2	436.4	423.2	413.4	403.5	383.9	367.5	334.6	292.0
BMV42-50-4003	5	40		561.0	544.6	528.2	518.4	505.2	475.7	452.8	413.4	367.5
BMV42-60-5003	6	50		672.6	656.2	633.2	623.4	610.2	577.4	544.6	498.7	439.6

CURVE BMV65



Installation Diagram (inches)



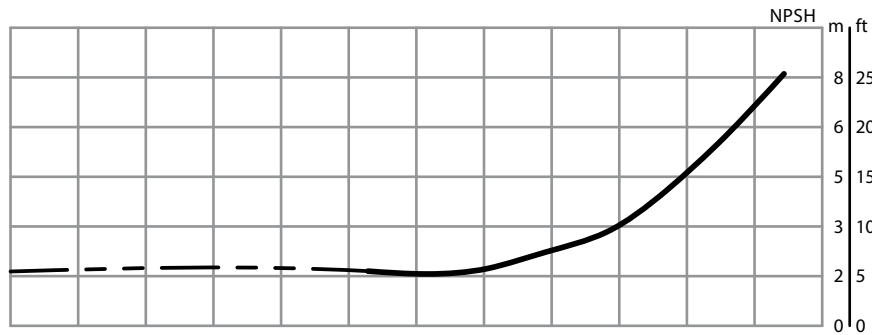
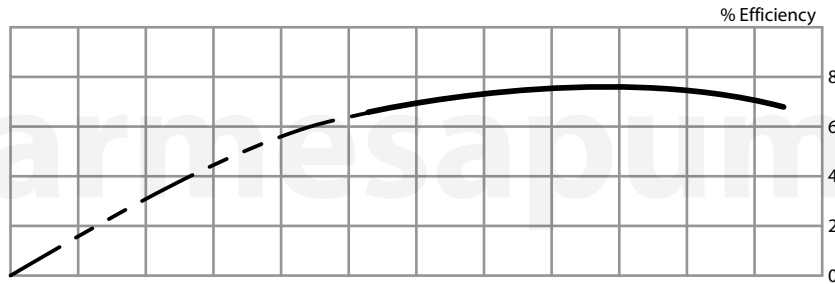
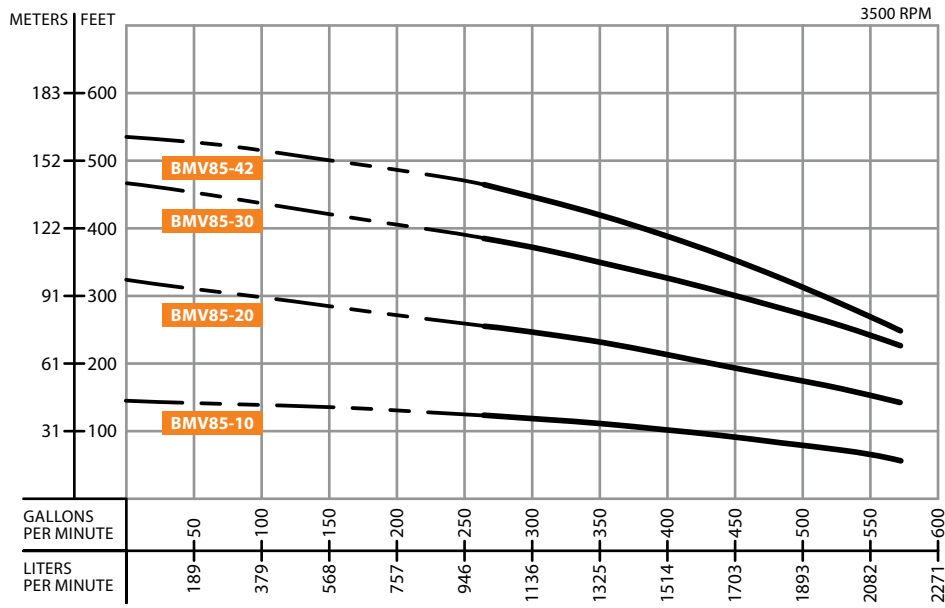
Performance Table

MODEL	STAGES	HP	Q (GPM)	H (ft)							
				176.1	220.1	264.2	286.2	308.2	352.2	396.3	440.3
BMV65-11-1003	1	10	189	85.3	82.0	75.5	72.2	68.9	59.1	45.9	32.8
BMV65-10-1503	1	15	379	121.4	114.8	108.3	105.0	101.7	91.9	78.7	68.9
BMV65-20-3003	2	30	568	242.8	236.2	219.8	210.0	203.4	187.0	167.3	137.8
BMV65-30-4003	3	40	757	367.5	354.3	328.1	315.0	305.1	282.2	252.6	213.3
BMV65-42-5003	4	50	946	426.5	406.8	377.3	360.9	337.9	308.4	272.3	216.5
BMV65-52-6003	5	60	1136	564.3	531.5	495.4	472.4	449.5	413.4	367.5	298.6

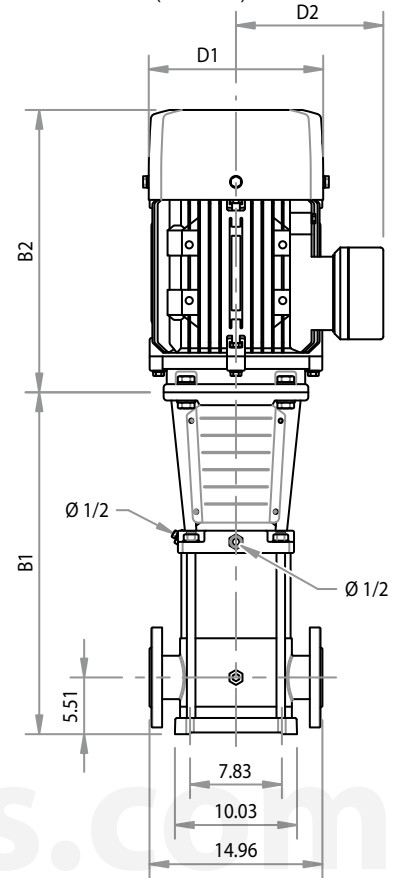
Size and Weight

Size (inches)					Weight (lb)
B1	B2	B1+B2	D1	D2	
22.1	16.9	39.0	10.2	8.2	240.3
26.4	19.3	45.7	13.0	10.0	390.2
29.7	23.2	52.9	14.2	11.2	546.7
32.9	26.0	58.9	15.7	12.2	690.0
36.2	26.0	62.2	15.7	12.2	740.8
39.4	27.6	67.0	18.1	13.4	886.3

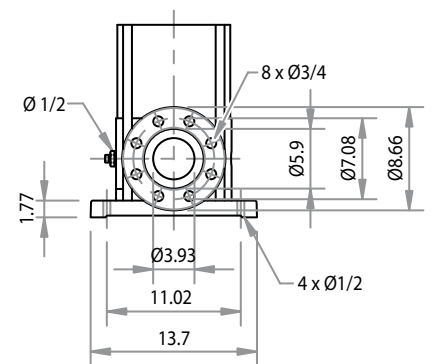
CURVE BMV85



Installation Diagram (inches)



PN16/DN100



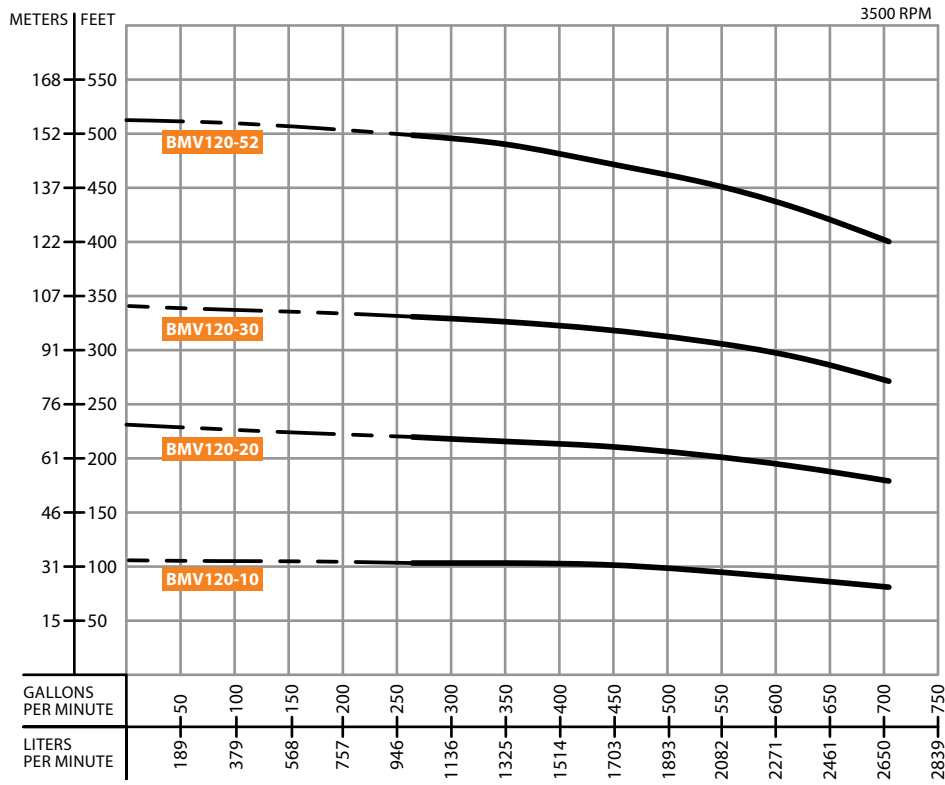
Size and Weight

Size (inches)					Weight (lb)
B1	B2	B1+B2	D1	D2	
22.5	19.3	41.8	13.0	10.0	414.5
30.4	26.0	56.4	15.7	12.2	670.2
34.1	27.6	61.6	18.1	13.4	864.2
37.7	27.6	65.2	18.1	13.4	873.0

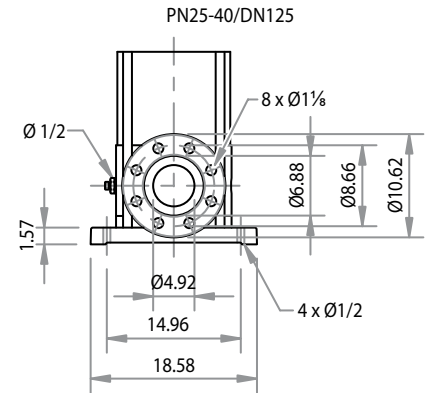
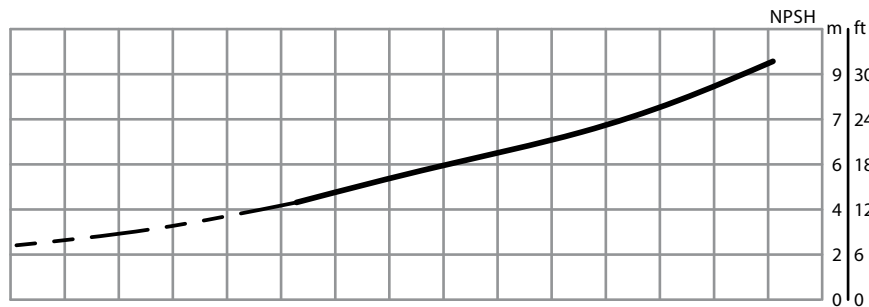
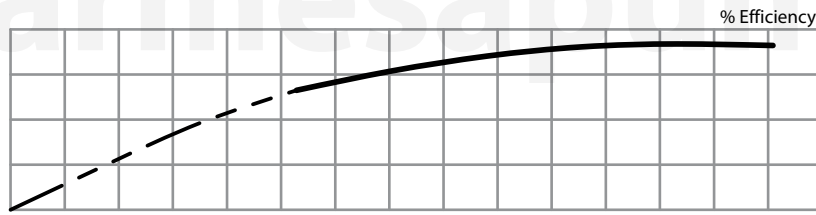
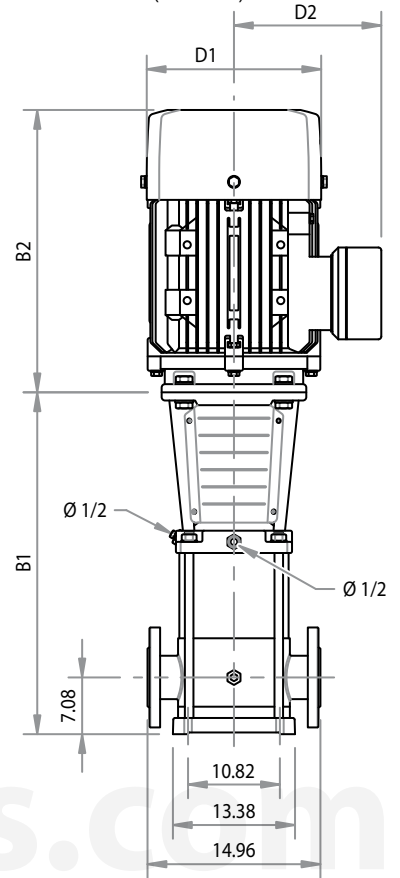
Performance Table

MODEL	STAGES	HP	Q (GPM)	H (ft)								
				264.2	308.2	352.2	374.2	396.3	440.3	484.3	528.3	572.4
BMV85-10-2003	1	20		118.1	114.8	108.3	101.7	98.4	95.1	85.3	75.5	59.1
BMV85-20-4003	2	40		249.3	239.5	226.4	216.5	210.0	196.9	183.7	170.6	144.4
BMV85-30-6003	3	60		380.6	364.2	344.5	334.6	318.2	305.1	288.7	259.2	226.4
BMV85-42-6003	4	60		462.6	442.9	419.9	406.8	387.1	357.6	334.6	292.0	236.2

CURVE BMV120



Installation Diagram (inches)



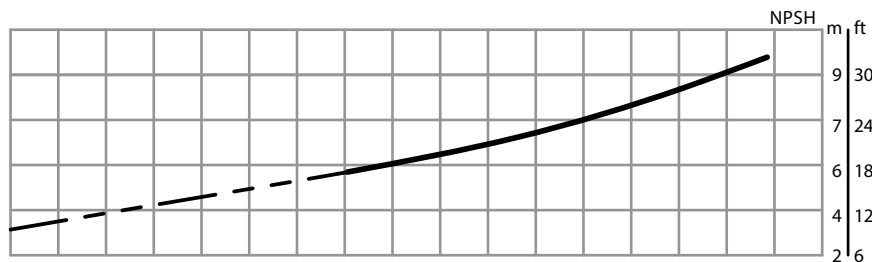
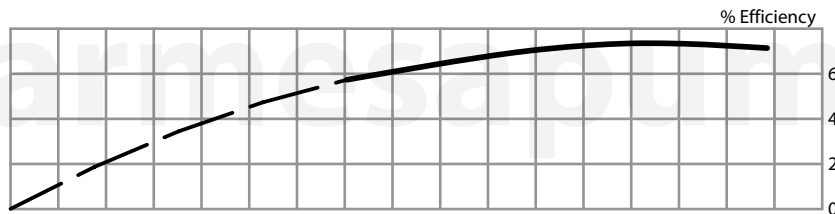
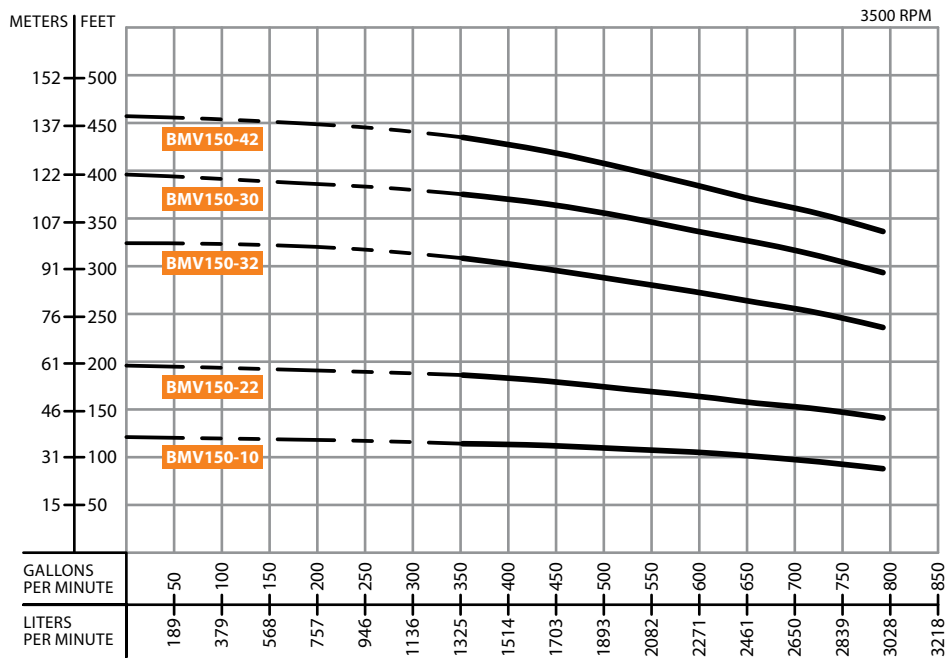
Size and Weight

Size (inches)					Weight (lb)
B1	B2	B1+B2	D1	D2	
33.1	21.7	54.7	13.0	10.0	551.2
39.4	26.0	65.4	15.7	12.2	837.8
46.9	30.3	77.2	20.1	14.6	1201.5
59.4	33.3	92.7	22.8	16.1	1521.2

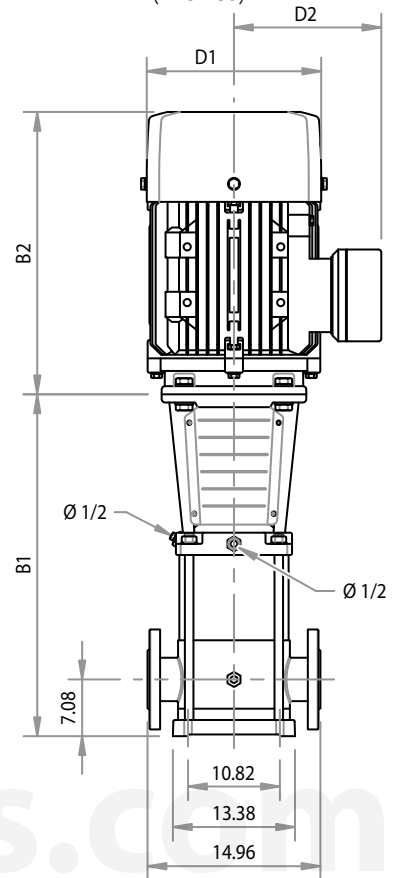
Performance Table

MODEL	STAGES	HP	Q (GPM)	H (ft)											
				264.2	308.2	352.2	396.3	440.3	484.3	528.3	572.4	616.4	660.4	704.5	
BMV120-10-2503	1	25	H (ft)	101.0	100.7	100.7	100.1	99.4	96.8	94.5	90.6	86.6	83.3	80.1	
BMV120-20-5003	2	50		217.5	216.5	215.6	213.3	211.3	206.7	203.4	199.1	195.5	187.0	179.1	
BMV120-30-7503	3	75		329.1	328.1	326.1	322.5	319.2	313.3	308.4	301.8	295.3	283.1	271.3	
BMV120-52-10003	5	100		498.7	495.4	491.1	482.3	472.4	464.2	456.0	444.6	433.1	416.7	400.3	

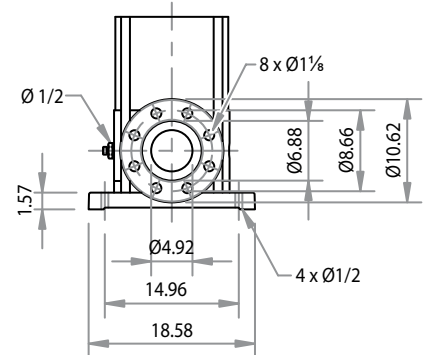
CURVE BMV150



Installation Diagram (inches)



PN25-40/DN125



Size and Weight

Size (inches)					Weight (lb)
B1	B2	B1+B2	D1	D2	
33.1	23.2	56.3	14.2	11.2	617.3
39.4	26.0	65.4	15.7	12.2	793.7
46.9	30.3	77.2	20.1	14.6	1201.5
46.9	33.3	80.1	22.8	16.1	1466.1
53.1	33.3	86.4	22.8	16.1	1499.1

Performance Table

MODEL	STAGES	HP	Q (GPM)	352.2	396.3	440.3	484.3	528.3	572.4	616.4	660.4	704.5	748.5	792.5
BMV150-10-3003	1	30	H (ft)	114.8	113.2	111.5	110.2	108.3	106.0	104.0	100.7	97.1	91.9	88.6
BMV150-22-4003	2	40		187.0	182.1	173.9	170.6	168.3	164.0	160.8	157.5	154.2	147.6	141.1
BMV150-32-7503	3	75		308.4	301.8	296.9	290.0	283.5	274.9	265.7	262.5	255.9	247.0	237.9
BMV150-30-10003	3	100		375.3	370.7	365.2	357.6	349.4	341.2	333.0	324.8	315.0	305.1	293.3
BMV150-42-10003	4	100		436.4	427.5	418.6	408.8	399.3	388.1	377.3	369.1	360.9	348.8	336.3