

Series 25314

300# Flanged Cast Steel Check Valve



Valves, Automation & Controls

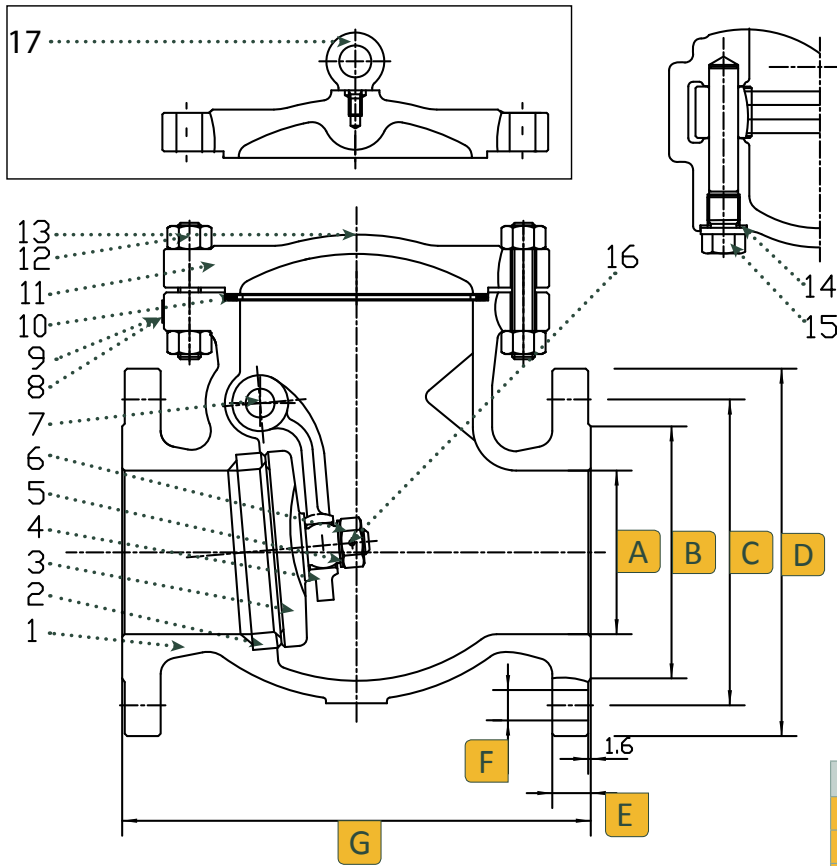
Features

- Bolted Cover
- Swing Type
- For Horizontal or Vertical lines
- Integral Seat
- Flanged Ends
- Butt-weld Ends
- Applicable Standards:
 - Steel valves ANSI B16.34
 - Face to face ANSI B16.10
 - End flanges ANSI B16.5
 - Butt-weld ends ANSI B16.25
 - Inspection and test API 598

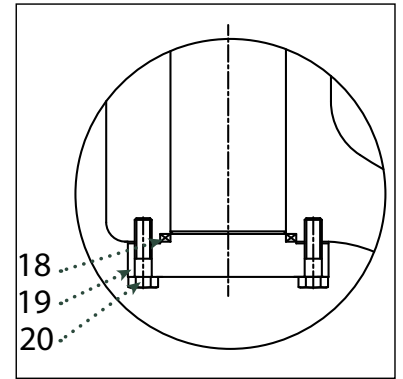


Temperature °F	Working Pressure psi
-20 to 100	740
200	675
300	655
400	635
500	600
600	550
650	535
700	535
750	505
800	410
850	270
900	170
950	105
1000	60

4" & Above



20" & 24"



Size	A	B	C	D	E	F	G	Num of Bolt Holes
2	1.97	3.62	5.00	6.50	0.88	0.75	10.51	8
2-1/2	2.56	4.12	5.88	7.50	1.00	0.88	11.50	8
3	3.15	5.00	6.62	8.25	1.12	0.88	12.52	8
4	3.94	6.19	7.88	10.00	1.25	0.88	14.02	8
6	5.90	8.50	10.62	12.50	1.44	0.88	17.48	12
8	7.87	10.62	13.00	15.00	1.62	1.00	20.98	12
10	10.00	12.76	15.25	17.50	1.88	1.12	24.50	16
12	12.01	15.00	17.75	20.50	2.00	1.25	28.00	16
14	13.27	16.26	20.25	23.00	2.12	1.25	33.00	20
16	15.24	18.50	22.50	25.50	2.25	1.38	34.00	20
18	18.00	21.00	24.75	28.00	2.37	1.375	38.50	24
20	20.00	23.00	27.00	30.50	2.50	1.375	40.00	24
24	24.00	27.25	32.00	36.00	2.75	1.625	53.00	24

No.	Part Name	Material
1	Body	Carbon Steel A216- WCB
2	Seat	A105 & STL.6
3	Disc	A105 & 410 Stainless Steel
4	Hinge	Carbon Steel A216
5	Gasket	A276 410
6	Nut	A276 410
7	Pin	A276 410
8	Rivit	304 Stainless Steel
9	Name Plate	304 Stainless Steel
10	Gasket	F304 & Flexible Graphite
11	Cover	Carbon Steel A216 - WCB
12	Bolt	B7 Steel A193
13	Nut	2H Steel A194
14	Gasket	Soft Iron
15	Plug	410 Stainless Steel
16	Pin	304 Stainless Steel
17	Eyebolt	Carbon Steel
18	Gasket	F304 & Flexible Graphite
19	Bolt	Carbon Steel
20	Gland	Carbon Steel

Ordering

Fig: 8 - 25 - 3 - 1 - 4

Description: 8" - Series 25 - 300# Flange Ends - Carbon Steel

Size	Series	Class	Ends	Body Material	Options
2	12	25	3	300	1 Flange
2-1/2	14				2 Butt-weld
3	16				
4	18				
6	20				
8	22				
10	24				