

SELF-PRIMING ENGINE DRIVEN PUMP

Series: 4ATS
4" x 4"
Spherical solids handling: 2"



SUCTION

4" NPT, horizontal flange.

DISCHARGE

4" NPT, horizontal with elbow.

LIQUID TEMPERATURE

Continuous: 160° F (71° C).

VOLUTE

Cast iron ASTM A-48, class 30, replaceable.

BODY

Cast iron ASTM A-48, class 30.

BODY CASING

Cast iron ASTM A-48, class 30, with two thumb screws for easy access to clean the impeller.

IMPELLER

Design: 2 vanes, semi-open type, statically balanced.

Material: cast iron ASTM A-48, class 30.

SHAFT SLEEVE

Steel.

HARDWARE

Stainless steel.

O-RINGS

Buna-N.

PAINT

Air dry enamel, water based.

SEAL

Design: mechanical, water lubricated.

Material: ceramic stationary part, carbon ring seal and exclusion in the rotating part. Buna-N elastomer and stainless steel spring.

CHECKVALVE

Valve: flap-neoprene

Weight: steel.

MOTOR

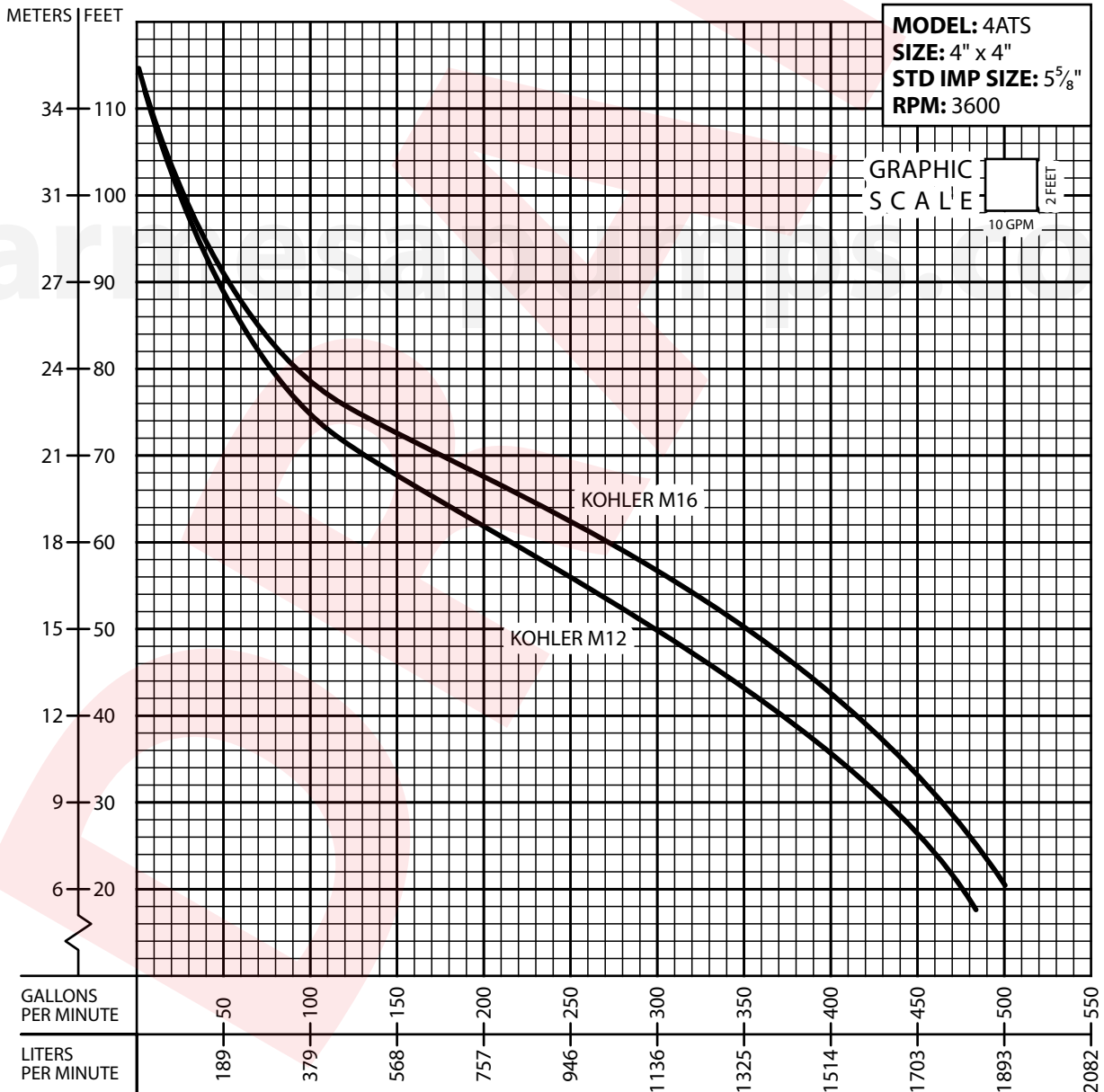
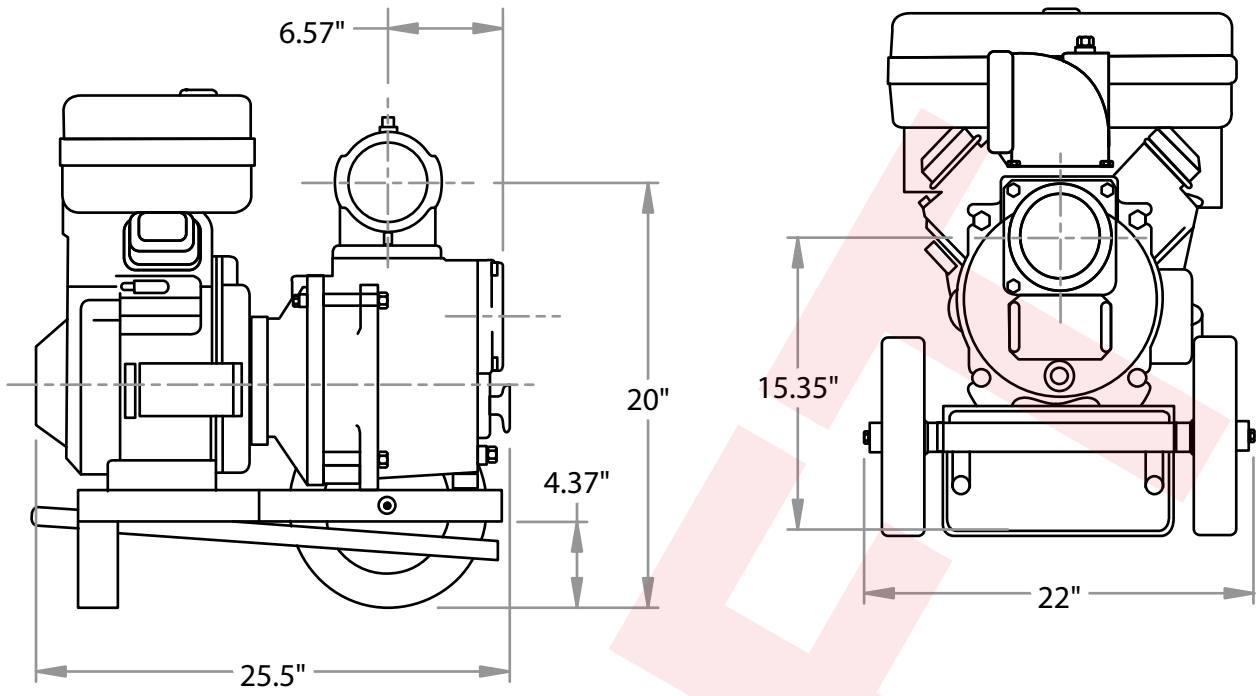
Assembled to a gasoline or diesel engine, single-cylinder, 4-stroke, air-cooled, OHV (Overhead Valve).

MOTOR	MODEL	HP	STARTING
Kohler	M12	12	Recoil
Kohler	M16	16	Recoil
Kohler	CH18	18	Electric
Briggs & Stratton	350447	18	Electric
Tek-Pro	T390	13	Manual

MOUNTING

- ▶ Base mounted
- ▶ On skid with iron or rubber wheels or pneumatic 5.6" x 15" tires.

SPECIFICATIONS



Testing is performed with water specific gravity of 1.0 @ 68° F (20° C); other fluids may vary performance.