

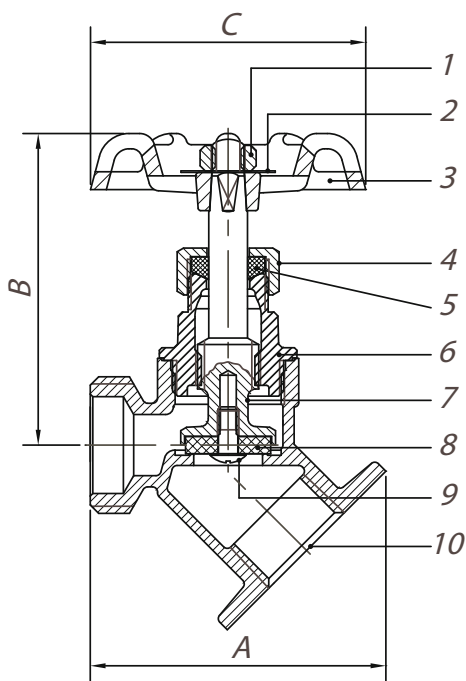


Series 0190112

FLANGED BRASS SILLCOCK, FIP



- 125 lb. CWP
- NPT x 3/4" NHT
- Cast brass
- CSA approved
- Certified to NSF/ANSI 61-8
- ISO 9001:2008 manufacturer



No.	Part	Material
1	Wheel Nut	Hot Rolled SAE 1010R
2	Name Plate	Aluminium
3	Hand-Wheel	Cast Iron
4	Packing Nut	Brass B16 C36000
5	Gland Packing	Teflon Polyflon
6	Bonnet	Brass B584 C85710
7	Stem	Brass B584 C85710
8	Seat Packing	NBR
9	Seat Screw	Brass B-124, C37700
10	Body	Brass B584 C85710

USA 800-766-0076

Fax 323-890-4456

www.smithcooper.com

Los Angeles, CA

Chicago, IL

Atlanta, GA

Vancouver, WA

Houston, TX

Size IN	Part Number	Weight LB	A IN	B IN	C IN
1/2	0190112G	0.6	2.25	2.40	2.09
3/4	0190112I	0.6	2.40	2.40	2.09