

# “DAISY CHAIN” FOR MORE CLEANING POWER.

Connect up to 5 PAS600's to produce up to 3,000 cfm.

The newly redesigned HEPA-AIRE® PAS600 Portable Air Scrubber from Abatement Technologies is now more versatile and easy to use than ever before. Check out these exciting features:

## INCREDIBLY LIGHTWEIGHT AND COMPACT

Weight: Just 33.5 lbs., including filters.

Dimensions: 23.75”L x 18”W x 17.5”H

## POWERFUL

Variable-speed airflow, rated at 200 cfm to 600 cfm.

## DURABLE CABINET

Anodized aluminum cabinet is lightweight and corrosion & scratch resistant.

## EFFECTIVE FILTRATION

Comes with two pre-filters and a True 99.97% HEPA filter.

VAPOR-LOCK® carbon pre-filter for odors is optional.

## ECONOMICAL TO OPERATE

Filters that last longer and cost less, so you can save thousands of dollars in replacement filter costs.

## SECURE STACKING

Multiple units nest securely together, to save space when stacked in a warehouse, a van, or in use on the job.

## LOW AMPERAGE DRAW

Up to five PAS600 units can be safely daisy-chained on one 15-amp circuit

## SAFETY FIRST

ETL-certified to conform to stringent UL and CSA safety standards.

## ORDER NOW

Call us today at 800-634-9091 (US) or 800-827-6443 (Canada) to place your order or to find out more.



United States: 800-634-9091

Canada: 800-827-6443

Overseas: 678-889-4200

[www.abatement.com](http://www.abatement.com)

# PAS600 SPECIFICATIONS AND PRODUCT FEATURES

## NET WEIGHT WITH FILTERS:

33.5 pounds

## SHIPPING WEIGHT:

42.5 pounds

## DIMENSIONS (LxWxH):

23.75" L x 18" W x 17.5" H

## POWER SUPPLY REQUIREMENTS:

120 volts AC, 60Hz, 15 amps

## NORMAL OPERATING AMPS:

1.9 A or less (Daisy-chain up to five units on one 15A circuit)

## MOTORIZED IMPELLER:

Motorized impeller with thermal overload protection, auto re-set, 60Hz, single phase

## CIRCUIT BREAKER:

12 amp

## POWER CORD:

10 ft. long grounded power cord with cord wrap clip

## CABINET MATERIAL:

.050 Anodized aluminum, assembled with airtight and watertight aircraft grade rivet construction

## TRANSPORTABILITY:

Two carrying handles

## PRE-FILTER ACCESS:

Easy-operating swing out hinged door with a secure cam latch & a gasket to protect against filter by-pass

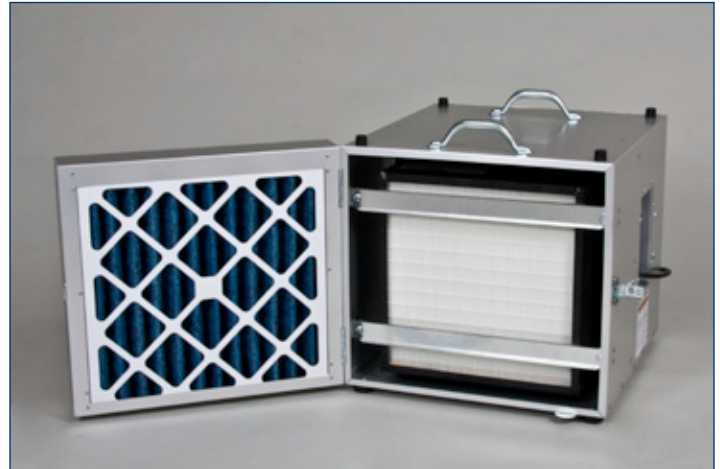
## FILTERS:

**Stage 1 pre-filter** - 1" coarse particulate pre-filter

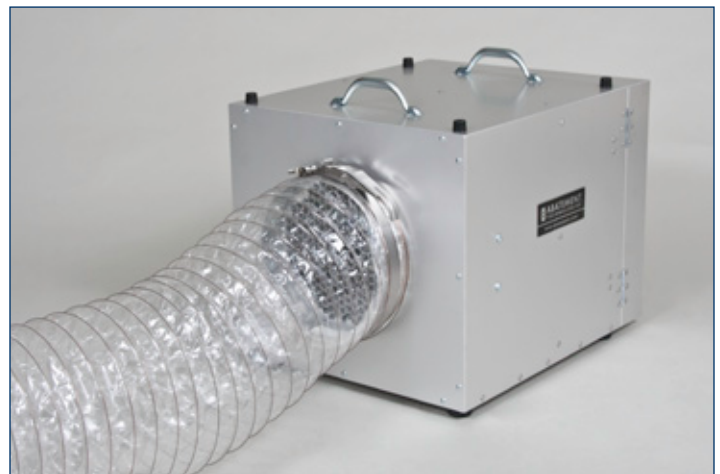
**Stage 2 pre-filter** - 2" pleated particulate pre-filter

**Optional Stage** - 2 Vapor-Lock® carbon filter

**True HEPA filter** - Tested and certified to an efficiency of 99.97% or higher against 0.3 micron size particles



Swing out filter access door



Optional accessories: 10" inlet collar & flex duct

## CONTROL PANEL FEATURES:

Speed Control Switch

Filter Change Indicator

Circuit Breaker

Power Indicator

GFCI Receptacle

Power Cord

